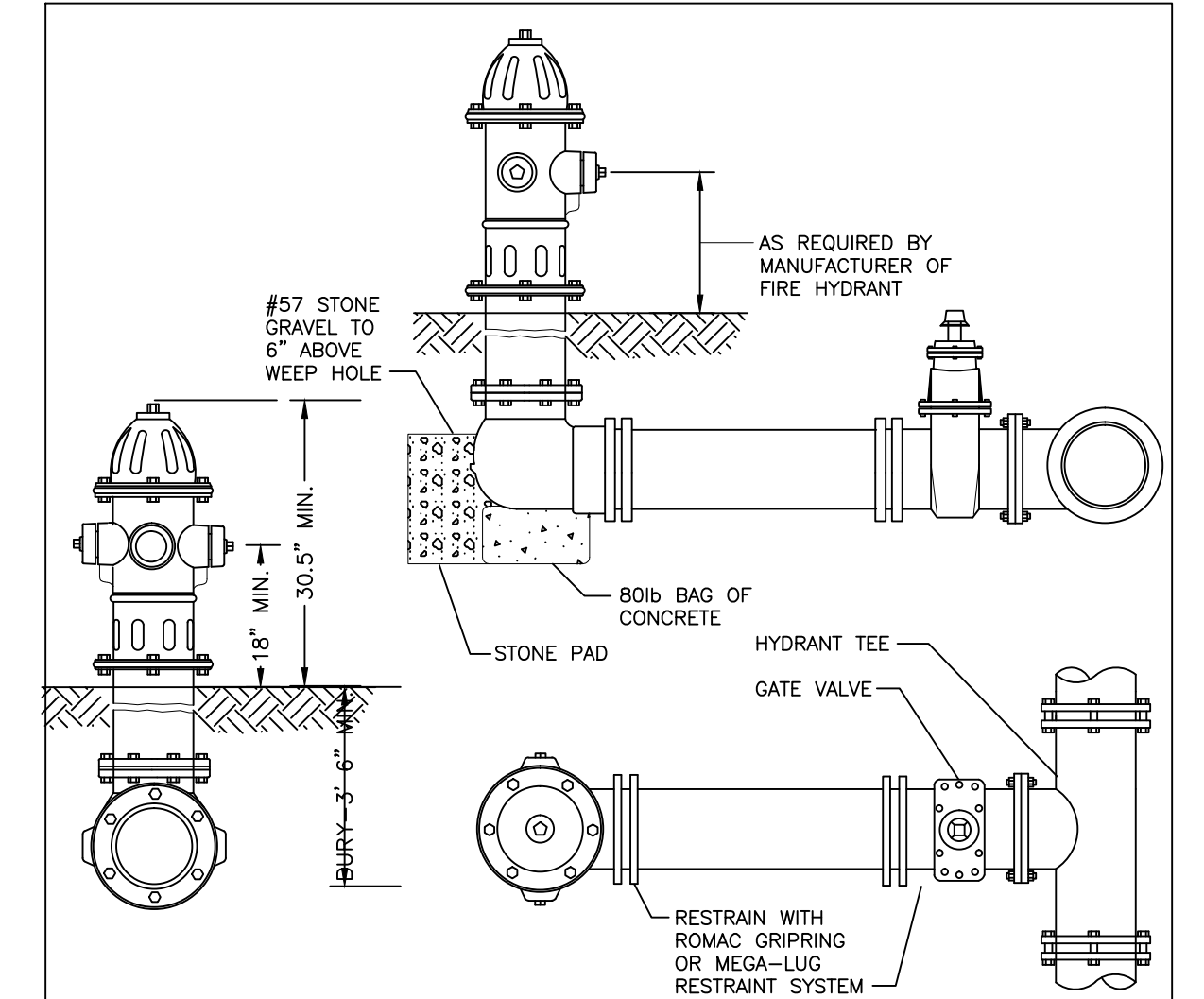


UTILITY CONSTRUCTION



GENERAL NOTES:

- HYDRANTS SHALL BE MUELLER COMPANY - MODEL: SUPER CENTURION 250; AMERICAN FLOW CONTROL - MODEL 5K" B-84-B; CLOW VALVE COMPANY - MODEL: MEDALLION; OR EQUAL WITH BLACK PRIMER FINISH.
- HYDRANT SHALL HAVE INTEGRAL SNAP-TIGHT STYLE STORZ CONNECTION WITH 5/8" VALVE OPENING, OPEN LEFT, 1 1/2" PENTAGON NUTS, TWO-2 1/2" NST CONNECTIONS, ONE-5" STORZ CONNECTION, DRAIN HOLES OPEN, AND 6" MJ SHOE.
- MINIMUM BURY DEPTH OF 3'-6".
- ALL HYDRANTS SHALL STAND PLUMB. HYDRANTS WITH PUMPER NOZZLES SHALL HAVE HOSE NOZZLES PARALLEL WITH, AND THE PUMPER NOZZLE PERPENDICULAR TO, THE CURB LINE. ALL HYDRANTS SHALL BE ORIENTED SO THAT THE PUMPER NOZZLE FACES THE CURB OR AS DIRECTED BY THE CITY.
- HYDRANT SHALL BE LOCATED AT LEAST 3' BEHIND THE CURB AND LESS THAN 10' FROM THE EDGE OF THE ROAD PAVEMENT OR AS DIRECTED BY THE CITY.
- ALL OTHER MATERIALS AND INSTALLATION MUST CONFORM WITH THE TECHNICAL STANDARDS OF WSACC AND CITY OF CONCORD.

FIRE HYDRANT PAINT COLOR CODE REQUIREMENTS:
 ALL NEW FIRE HYDRANTS INSTALLED IN THE CITY OF CONCORD SHALL BE PAINTED IN ACCORDANCE WITH THE FOLLOWING COLORS:

- HYDRANTS ON PUBLIC WATER MAINS SHALL BE PAINTED SAFETY YELLOW, SHERWIN WILLIAMS STEEL MASTER 9500 B56-300 SERIES LRV 30% OR EQUAL.
- PRIVATE HYDRANTS ON PRIVATE WATER MAINS SHALL BE PAINTED SAFETY RED, SHERWIN WILLIAMS SW4081 LRV 11% OR EQUAL.

FOR ALL FIELD PAINTING, ALL SURFACES SHALL BE SANDBLASTED AND PROPERLY PREPARED ACCORDING TO THE PAINT MANUFACTURER'S RECOMMENDATION PRIOR TO PAINTING. ALL FIRE HYDRANTS AND ANY PORTIONS OF THE HYDRANT ASSEMBLY EXPOSED TO VIEW (ABOVE ADJACENT GROUND ELEVATION) SHALL BE PAINTED WITH TWO (2) OR MORE EVENLY APPLIED COATS OF HYDRANT ENAMEL PAINT. HYDRANTS WILL BE RETOUCHEDED / REPAINTED AS NECESSARY AFTER INSTALLATION AND PRIOR TO ACCEPTANCE.

TYPICAL FIRE HYDRANT

TABLE OF EMBEDMENT DEPTHS BELOW PIPE

D	MIN SOIL	MIN ROCK
27" & SMALLER	6"	6"
30" TO 60"	6"	9"
66" & LARGER	6"	12"

NOTES:

- GRANULAR EMBEDMENT MATERIAL SHALL BE CRUSHED ROCK, PEA GRAVEL COARSE AGGREGATE SIZE NUMBER 57. EMBEDMENT MATERIAL SHALL BE PLACED IN LAYERS NOT MORE THAN 6" DEEP AND COMPACTED AS SPECIFIED.
- HAND PLACED EMBEDMENT SHALL BE COMPACTED FINELY DIVIDED MATERIAL FREE FROM DEBRIS AND STONES.
- EMBEDMENT ABOVE THE TOP OF THE PIPE SHALL BE AN UNCOMPACTED LAYER FOR ALL INSTALLATIONS.
- REFER TO SPECIFICATIONS FOR GEOTECHNICAL FABRIC OR SPECIAL EMBEDMENT REQUIREMENTS FOR TRENCHES IN FINE SOILS EXTENDING BELOW GROUNDWATER LEVEL.
- TRENCH OUTLINES DO NOT INDICATE ACTUAL TRENCH EXCAVATION SHAPE, SOIL CONDITIONS, OR PRESENCE OF SHEETING LEFT IN PLACE. EMBEDMENT MATERIAL SHALL EXTEND THE FULL WIDTH OF THE ACTUAL TRENCH EXCAVATION.

LEGEND

- Bc: OUTSIDE DIAMETER OF PIPE COVER ABOVE TOP OF PIPE
- D: NOMINAL PIPE SIZE
- o: EMBEDMENT BELOW PIPE (SEE TABLE)
- HAND PLACED EMBEDMENT
- GRANULAR EMBEDMENT
- CONCRETE

CLASS A ARCH ENCASEMENT

CLASS B

CLASS C

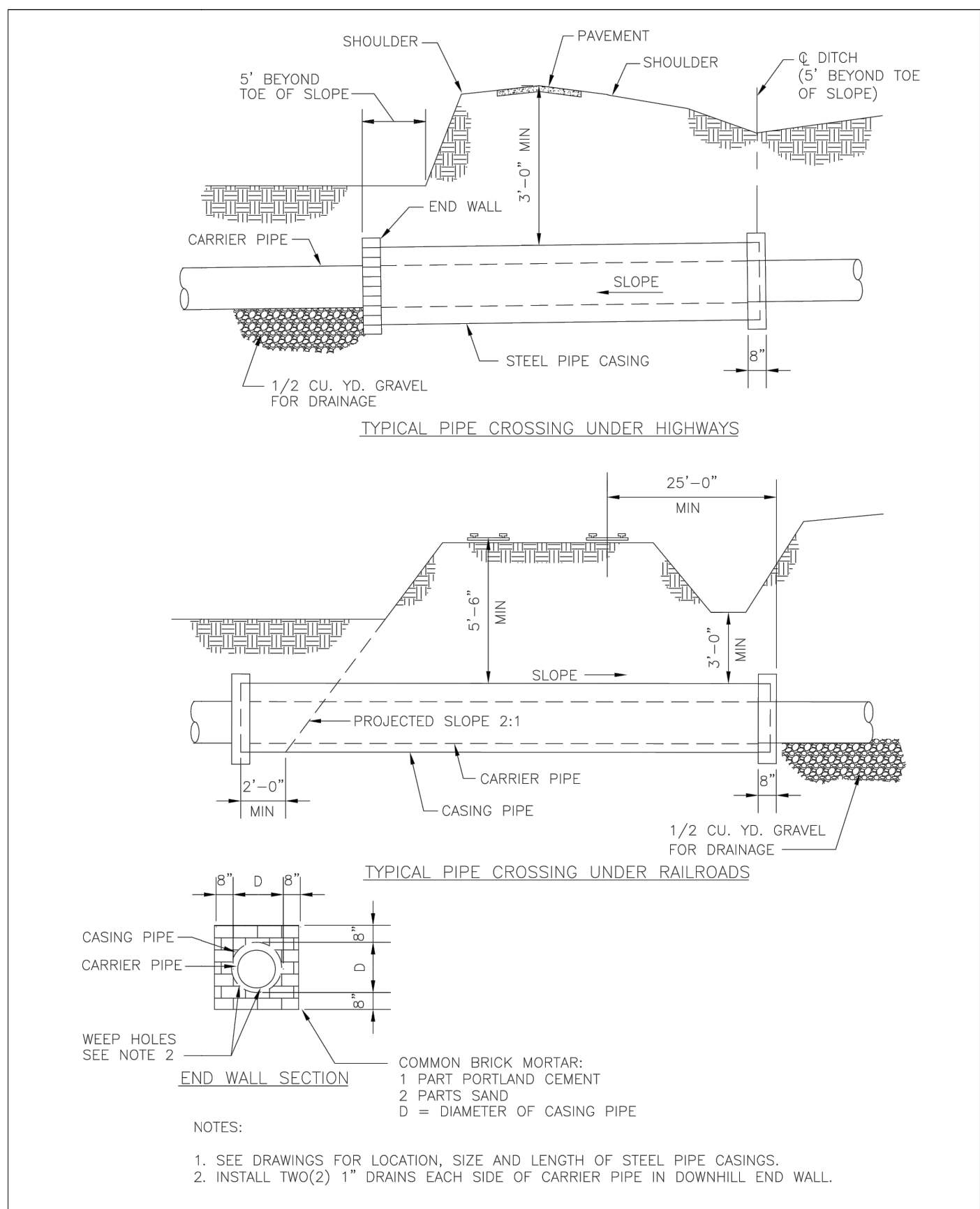
CLASS D

WSACC WATER AND SEWER AUTHORITY OF CABARRUS COUNTY

EMBEDMENTS FOR MAINS

FILE NAME: WS-1.0 DATE: 8/06

REVISION NO.	DATE	BY	CHKD

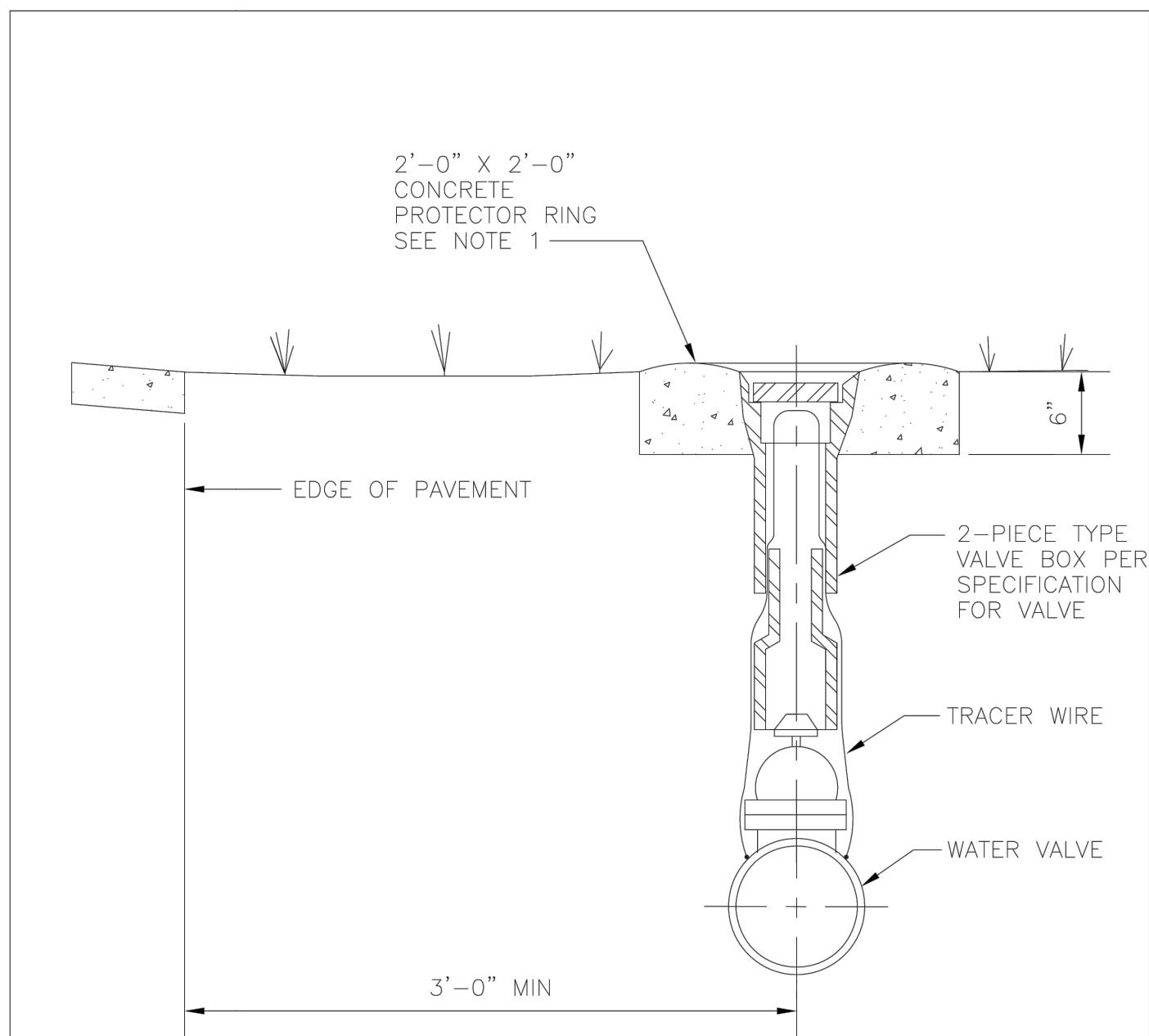


REVISION NO.	DATE	BY	CHKD

WSACC WATER AND SEWER AUTHORITY OF CABARRUS COUNTY

ENCASEMENT PIPE UNDER HIGHWAYS AND RAILROADS

FILE NAME: M1.0 DATE: 8/06

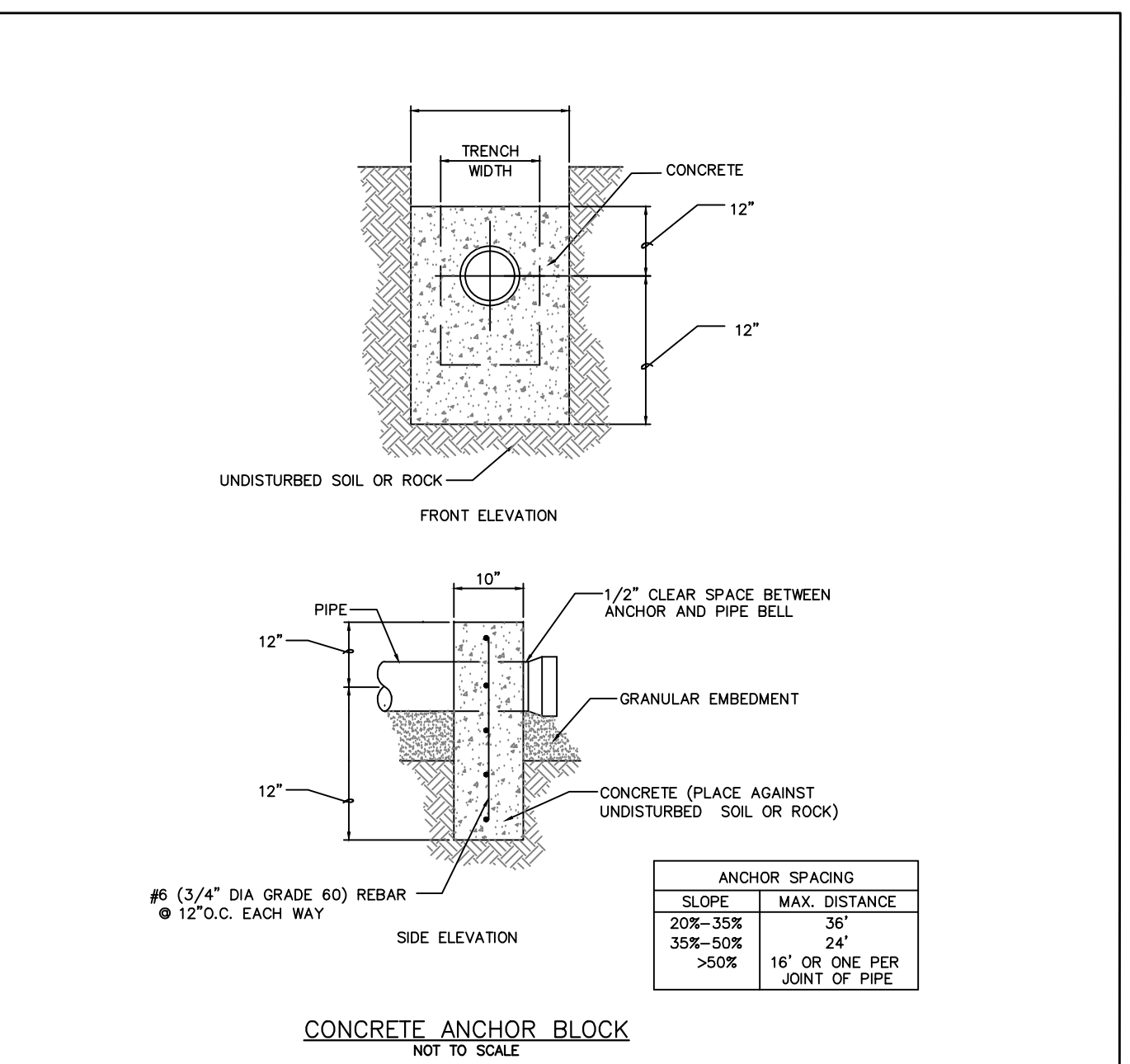
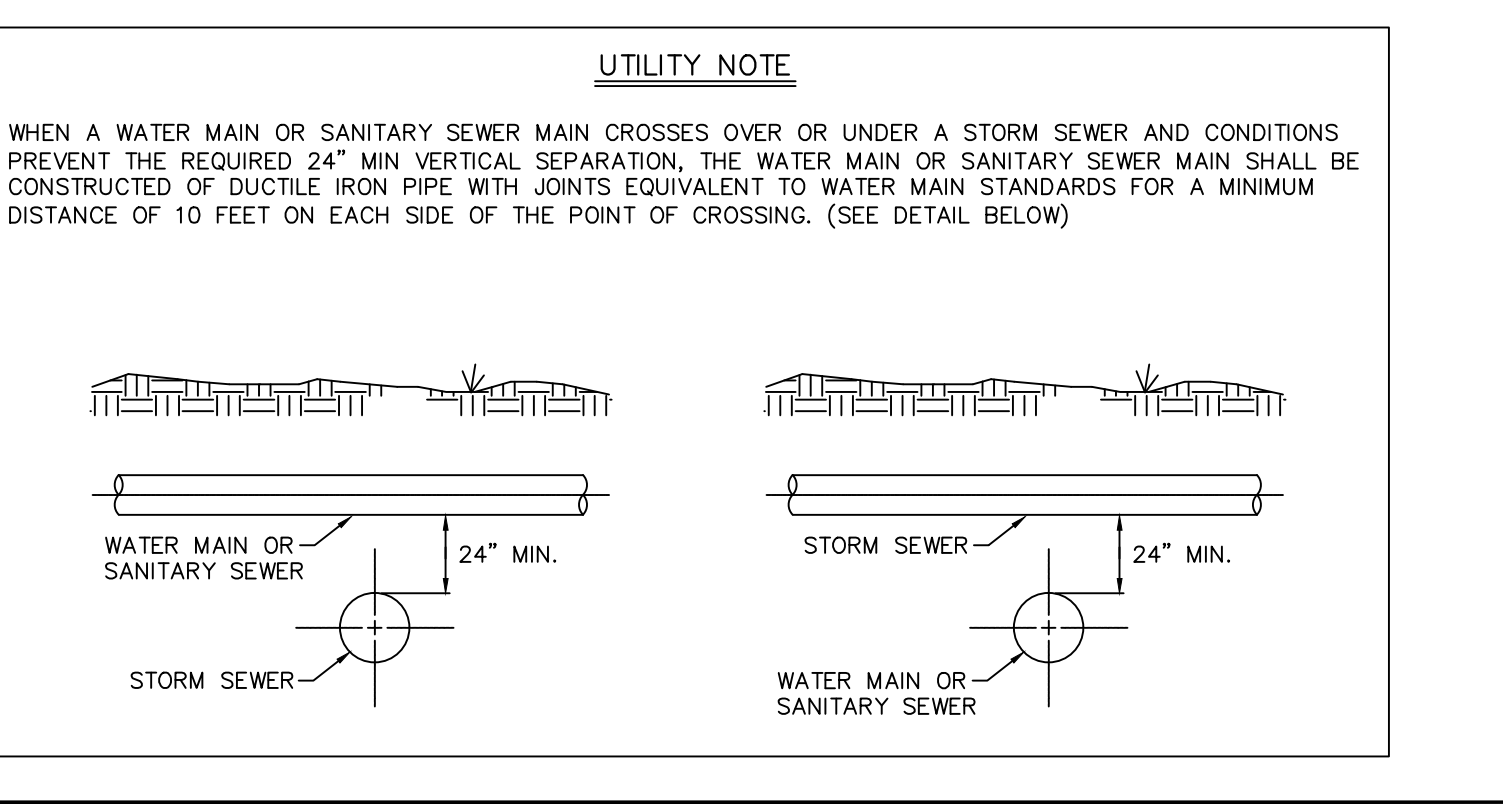
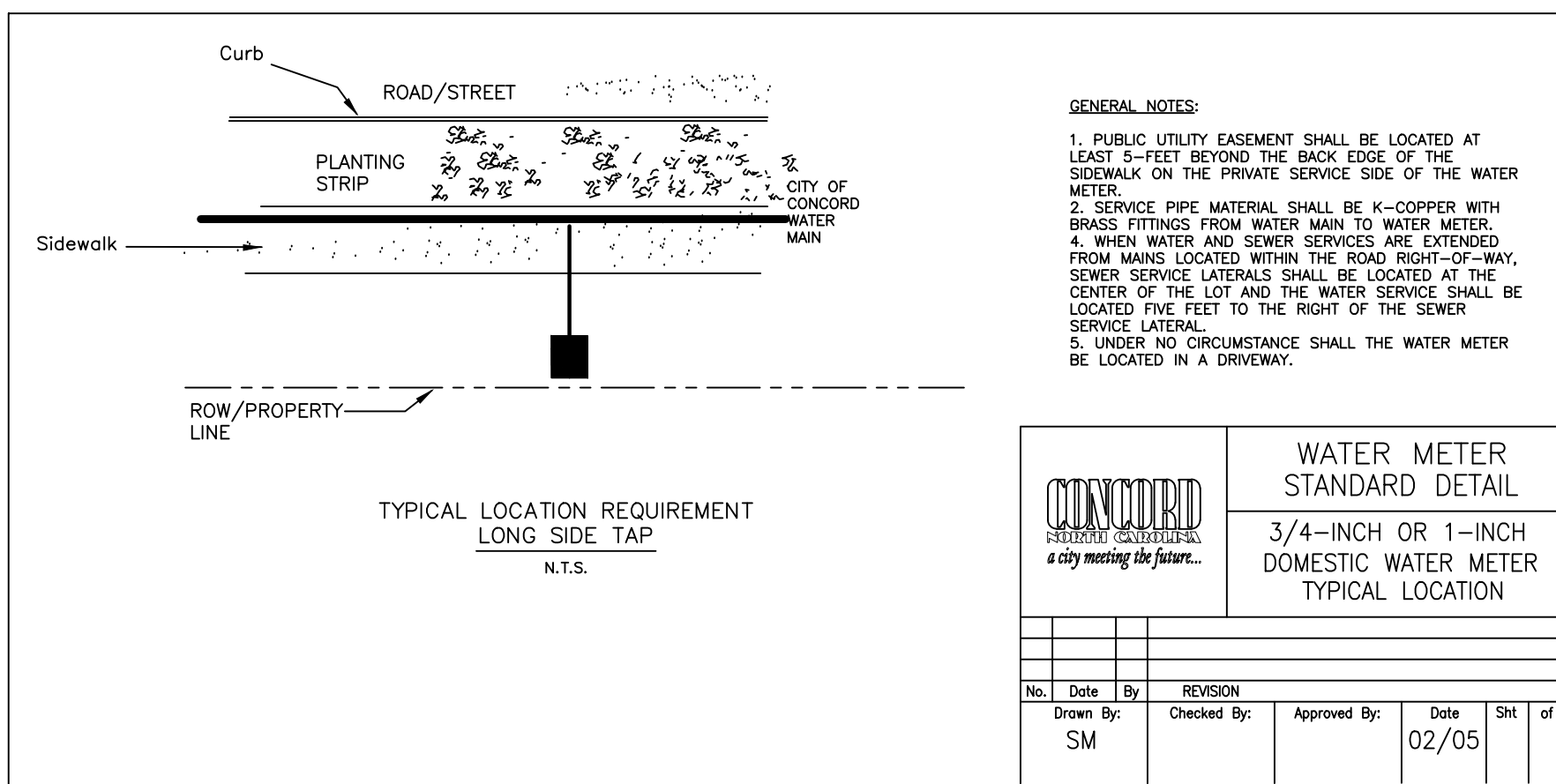


REVISION NO.	DATE	BY	CHKD

WSACC WATER AND SEWER AUTHORITY OF CABARRUS COUNTY

VALVE BOX INSTALLATION

FILE NAME: W1.0 DATE: 8/06

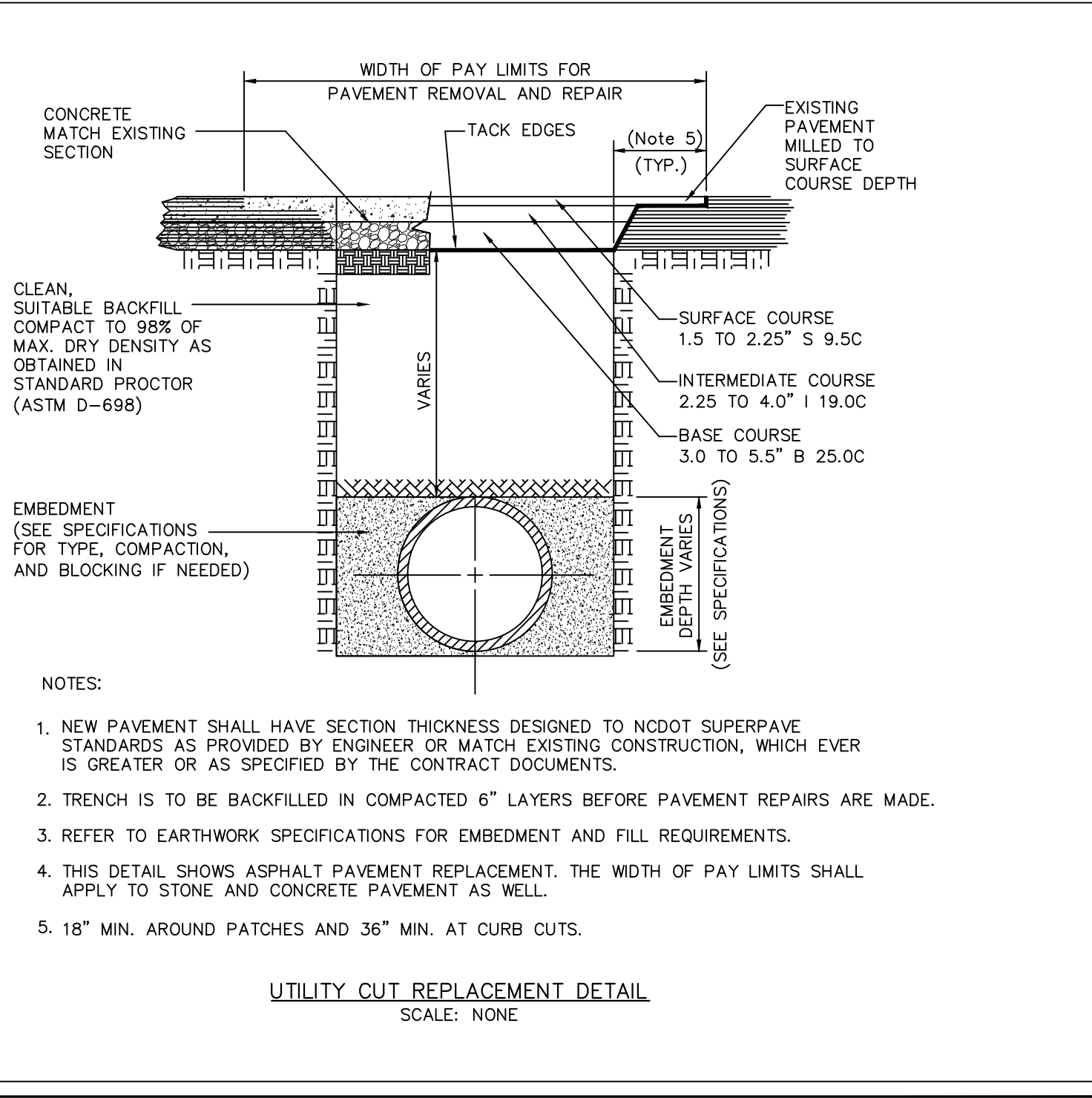


CONCORD CITY OF CONCORD STANDARD DETAIL TYPICAL ANCHOR BLOCK

REVISION

No.	Date	By	Checked By	Approved By	Date	Sht	of

Drawn By: SVM



PREPARED BY
 ENGINEERING DEPARTMENT
 CITY OF CONCORD
 P.O. BOX 308
 CONCORD N.C. 28026
 (704) 920-5425

