

5/28/99

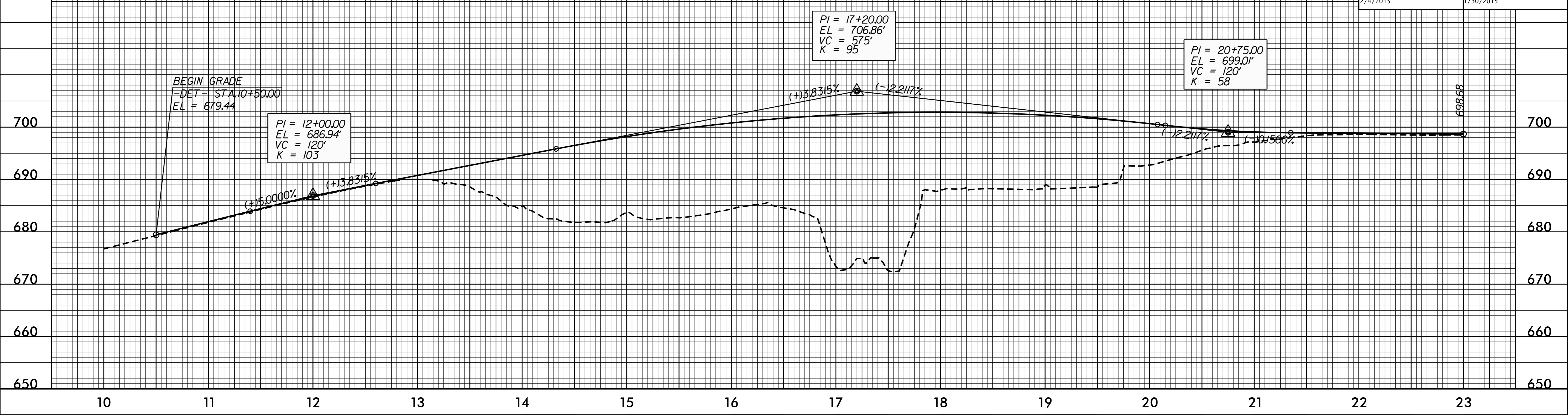
SEE SHEETS 6 & 7 FOR PLANS OF -DET-

PROJECT REFERENCE NO. <b>B-5136</b>	SHEET NO. <b>9</b>
ROADWAY DESIGN ENGINEER GREGORY E. BREWSTER PROFESSIONAL SEAL 18903	HYDRAULICS ENGINEER KAREN HEFFNER PROFESSIONAL SEAL 031025
2/4/2015	1/30/2015

BM-3 RR SPIKE SET IN BASE 24" OAK  
NORTH 615429 EAST 1521335  
185.69' RT OF -DET- STA. 14+83.78  
ELEV. = 687.72

**-DET-**

BM-2 RR SPIKE SET IN BASE OF POWER POLE  
NORTH 615854 EAST 1521659  
21.49' LT OF -DET- STA. 20+14.73  
ELEV. = 690.62

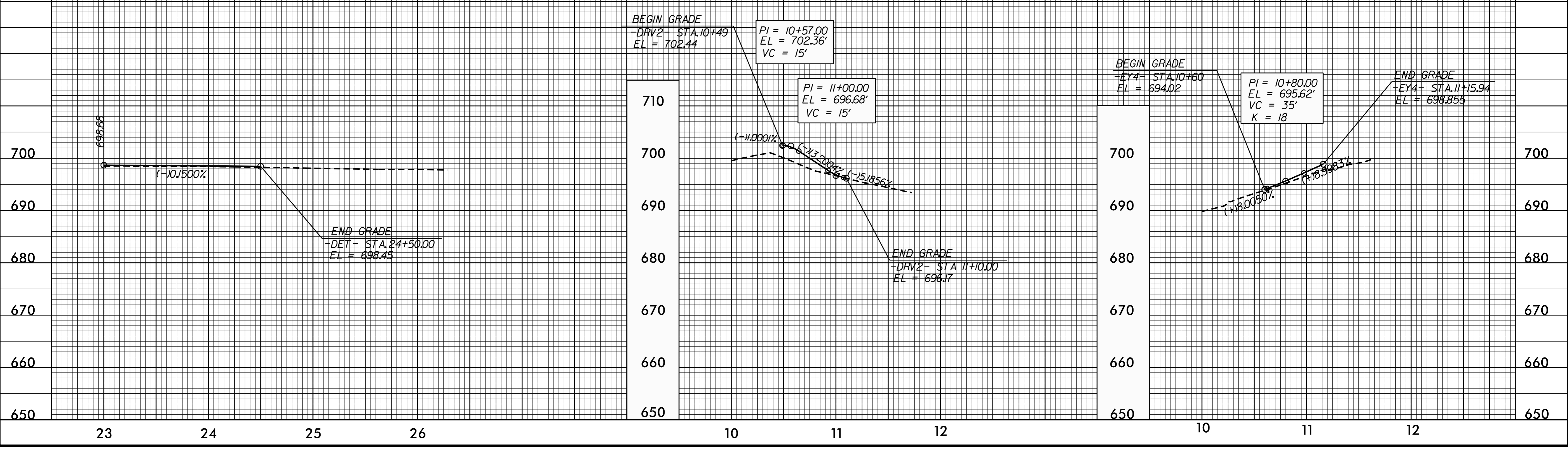


SEE SHEET 5 FOR PLANS OF -DRV2- & -EY4-

**-DET-**

**-DRV2-**

**-EY4-**



07 JAN-2015 15:02 B5136\_Rdy.plt.dgn