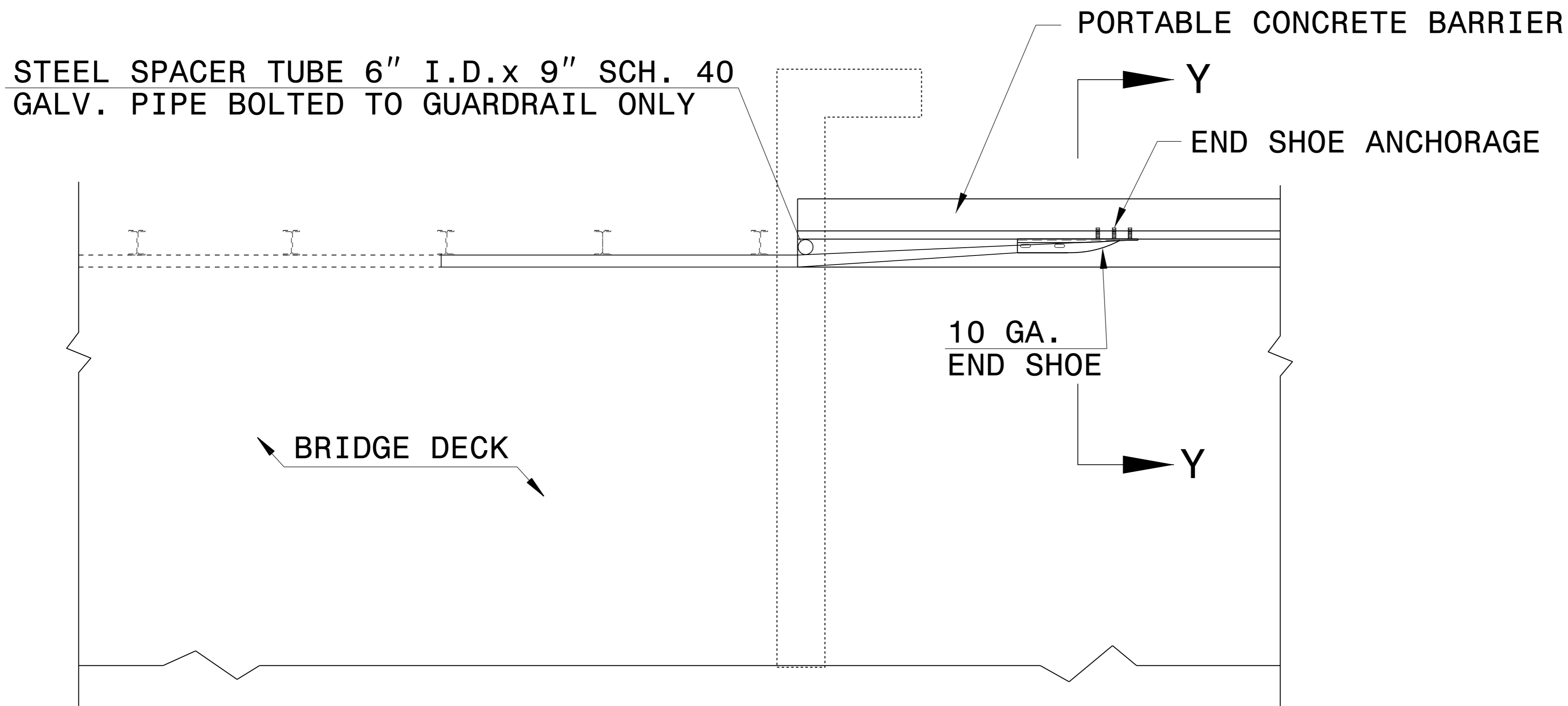


### ELEVATION VIEW



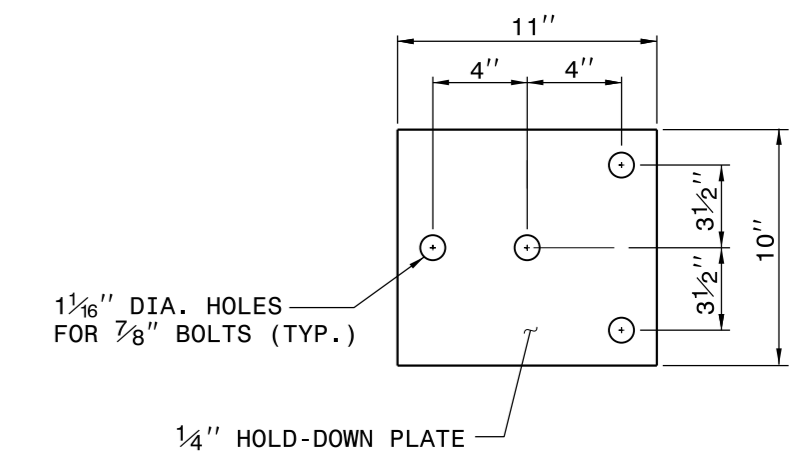
### PLAN VIEW

**NOTES FOR 4 BOLT HOLD DOWN PLATE**

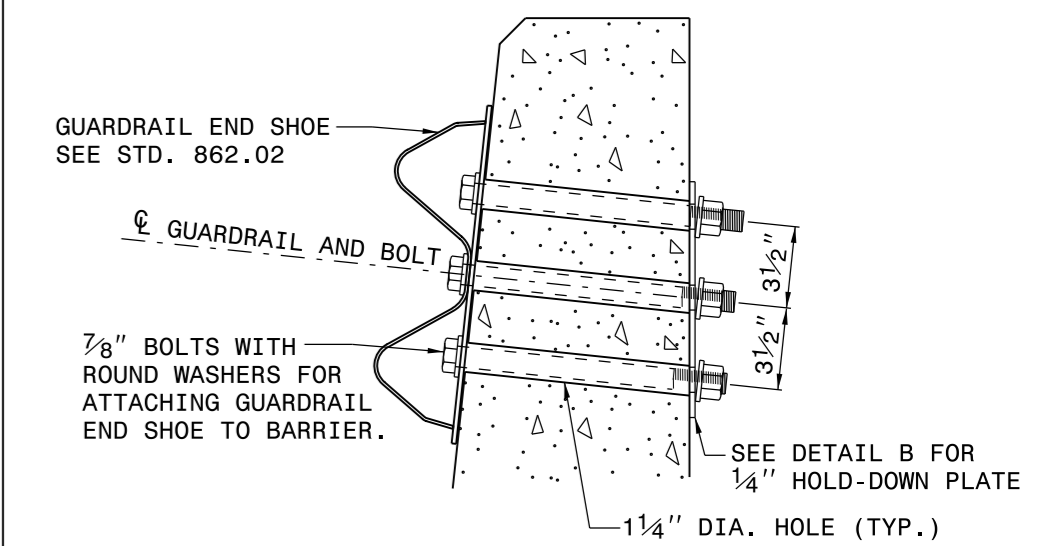
THE GUARDRAIL ANCHOR ASSEMBLY SHALL CONSIST OF A 1/4" HOLD DOWN PLATE AND 4 - 7/8" DIA. BOLTS WITH NUTS AND WASHERS.

THE HOLD-DOWN PLATE SHALL CONFORM TO AASHTO M270 GRADE 36. AFTER FABRICATION, THE HOLD-DOWN PLATE SHALL BE HOT-DIP GALVANIZED IN ACCORDANCE WITH AASHTO M111.

AFTER INSTALLATION, THE EXPOSED THREAD OF THE BOLT SHALL BE BURRED WITH A SHARP POINTED TOOL. THE 1/4" DIA. HOLES SHALL BE FORMED OR DRILLED WITH A CORE BIT. IMPACT TOOLS WILL NOT BE PERMITTED. ANY CONCRETE DAMAGED BY THIS WORK SHALL BE REPAIRED TO THE SATISFACTION OF THE ENGINEER.



#### 4 BOLT HOLD DOWN PLATE

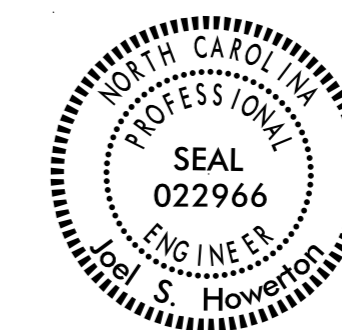


#### PART SECTION OF BARRIER OR RAIL THRU END SHOE SECTION AND 4 BOLT HOLD DOWN PLATE

**CONTRACT STANDARDS AND DEVELOPMENT UNIT**  
Office 919-707-6950 FAX 919-250-4119

### TEMPORARY ANCHOR UNIT TYPE W-BEAM

ORIGINAL BY: E.E. WARD DATE: 10-03  
 MODIFIED BY: DATE:   
 CHECKED BY: DATE:   
 FILE SPEC.: /usr/details/stand/862stds/anc.dgn



DocuSigned by:  
Joel Howerton  
873F3D17DCDC45F

1/21/2015

5/14/99

\$\$\$\$\$  
 TIME\$\$\$\$\$  
 USER\$\$\$\$\$  
 NAME\$\$\$\$\$  
 \$\$\$