

**This electronic collection of documents is provided
for the convenience of the user
and is Not a Certified Document –**

**The documents contained herein were originally issued
and sealed by the individuals whose names and license
numbers appear on each page, on the dates appearing
with their signature on that page.**

**This file or an individual page
shall not be considered a certified document.**

09/08/09

TIP PROJECT: R-5206

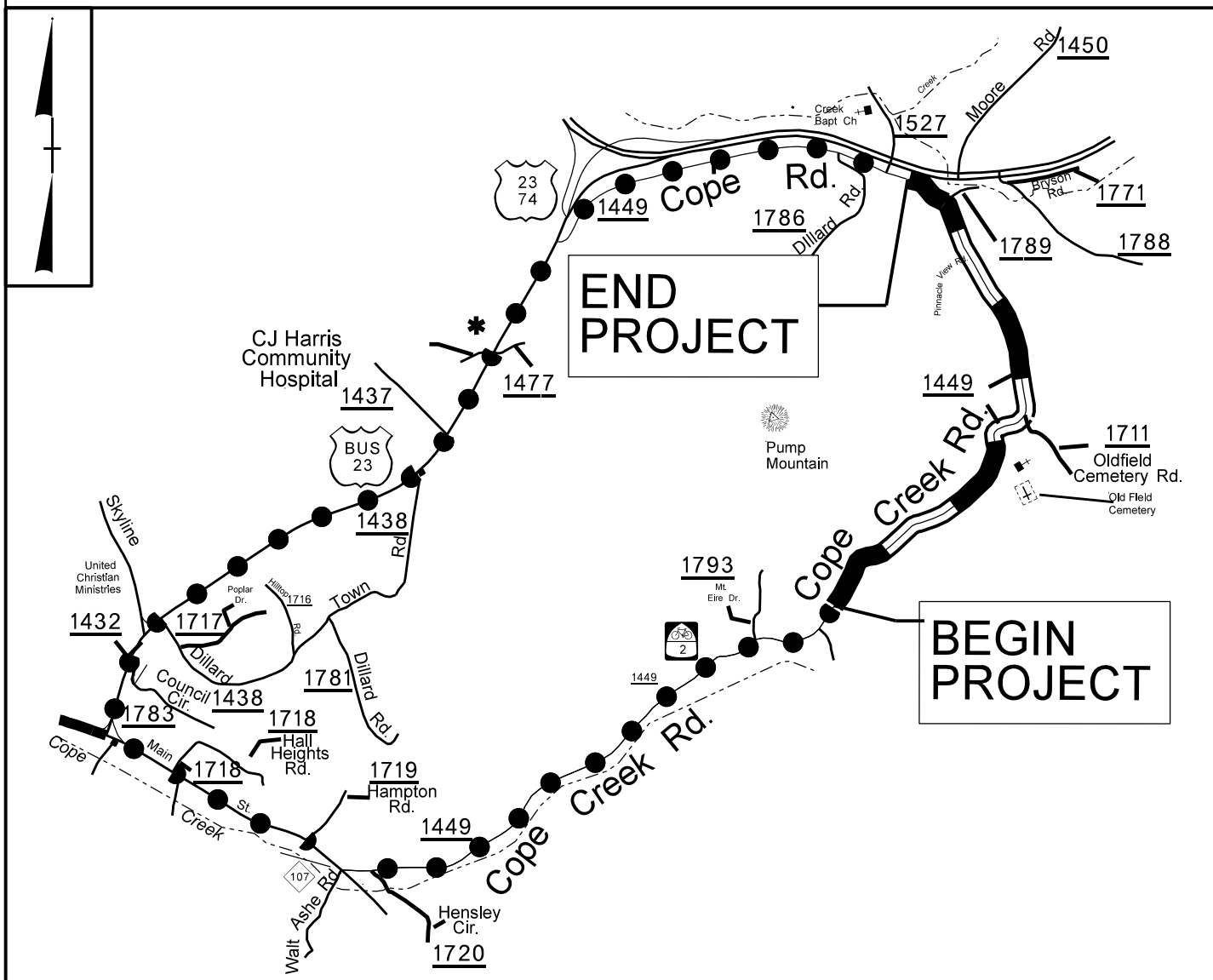
STATE OF NORTH CAROLINA
DIVISION OF HIGHWAYS

T.I.P. NO.	SHEET NO.
R-5206	UO-1

UTILITIES BY OTHERS PLANS
JACKSON COUNTY

LOCATION: IMPROVEMENT TO COPE CREEK RD FROM EAST
COPE CREEK ROAD (SR 1710) TO US 74.

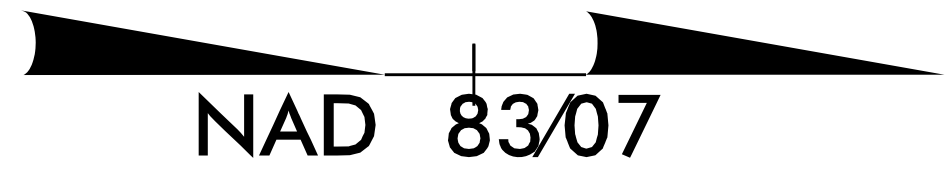
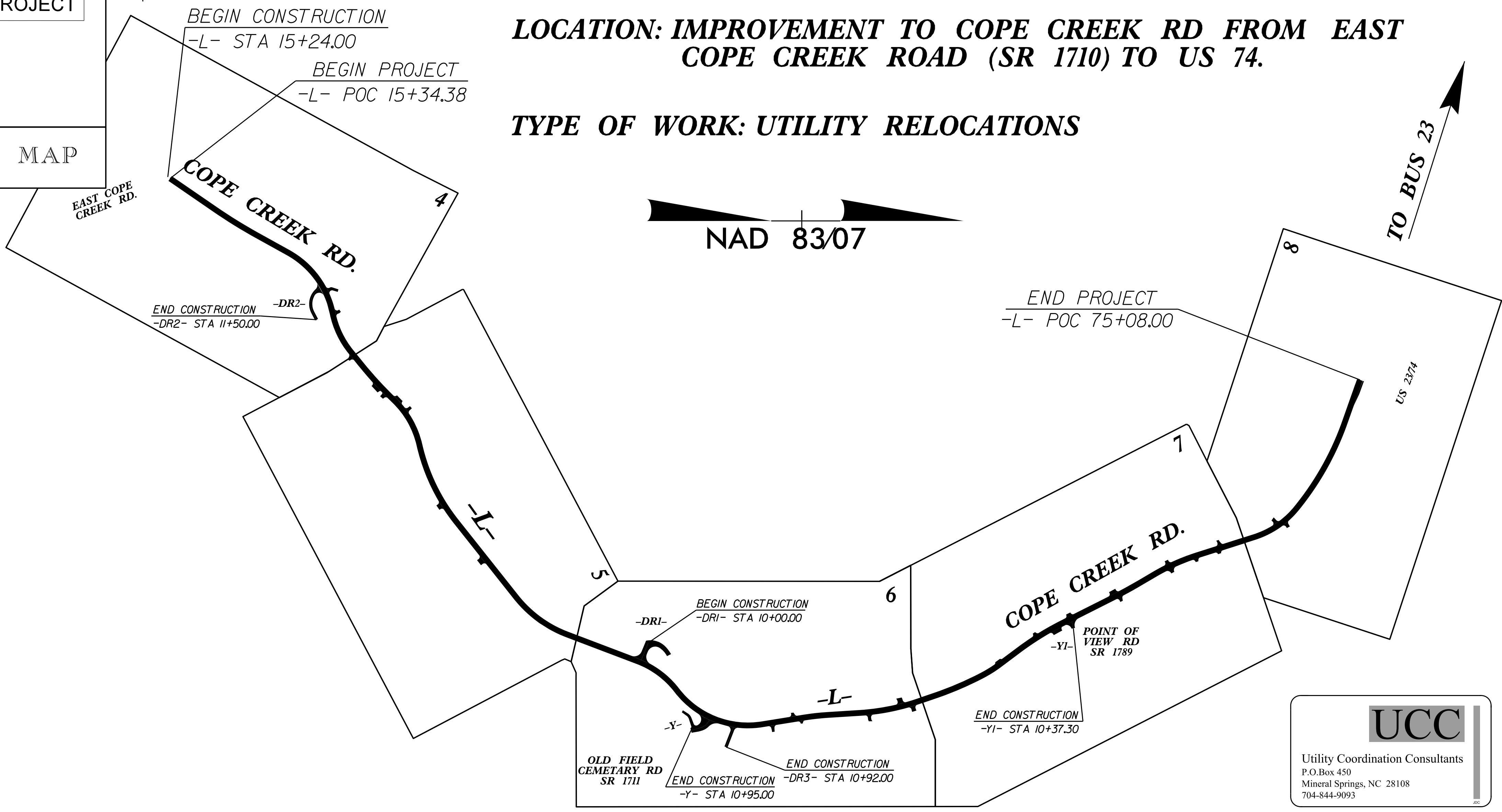
TYPE OF WORK: UTILITY RELOCATIONS



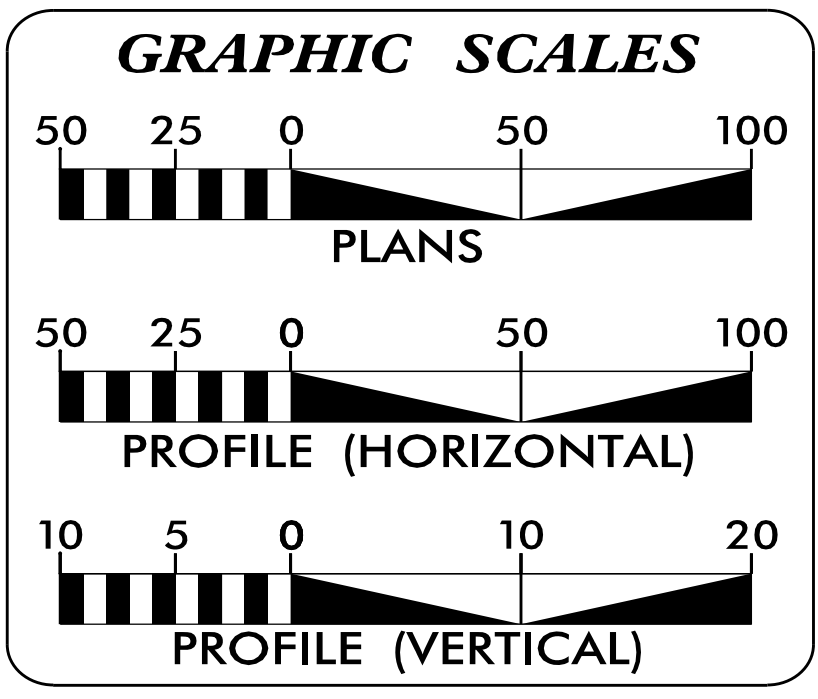
DETOUR VICINITY MAP

TO: SYLVIA

TO BUS 23



UCC
Utility Coordination Consultants
P.O. Box 450
Mineral Springs, NC 28108
704-844-9093



INDEX OF SHEETS

SHEET NO.	DESCRIPTION
UO-1	TITLE SHEET
UO-2 THRU UO-6	UTILITY BY OTHERS PLAN SHEETS

UTILITY OWNERS ON PROJECT

(A) DUKE ENERGY POWER
(B) FRONTIER COMMUNICATIONS..... TELEPHONE
(C) MORRIS BROADBAND..... CABLE TV


PREPARED IN THE OFFICE OF:
**DIVISION OF HIGHWAYS
UTILITIES UNIT
UTILITIES ENGINEERING**

1555 MAIL SERVICES CENTER
RALEIGH NC 27699-1555
PHONE (919) 707-6690
FAX (919) 250-4151

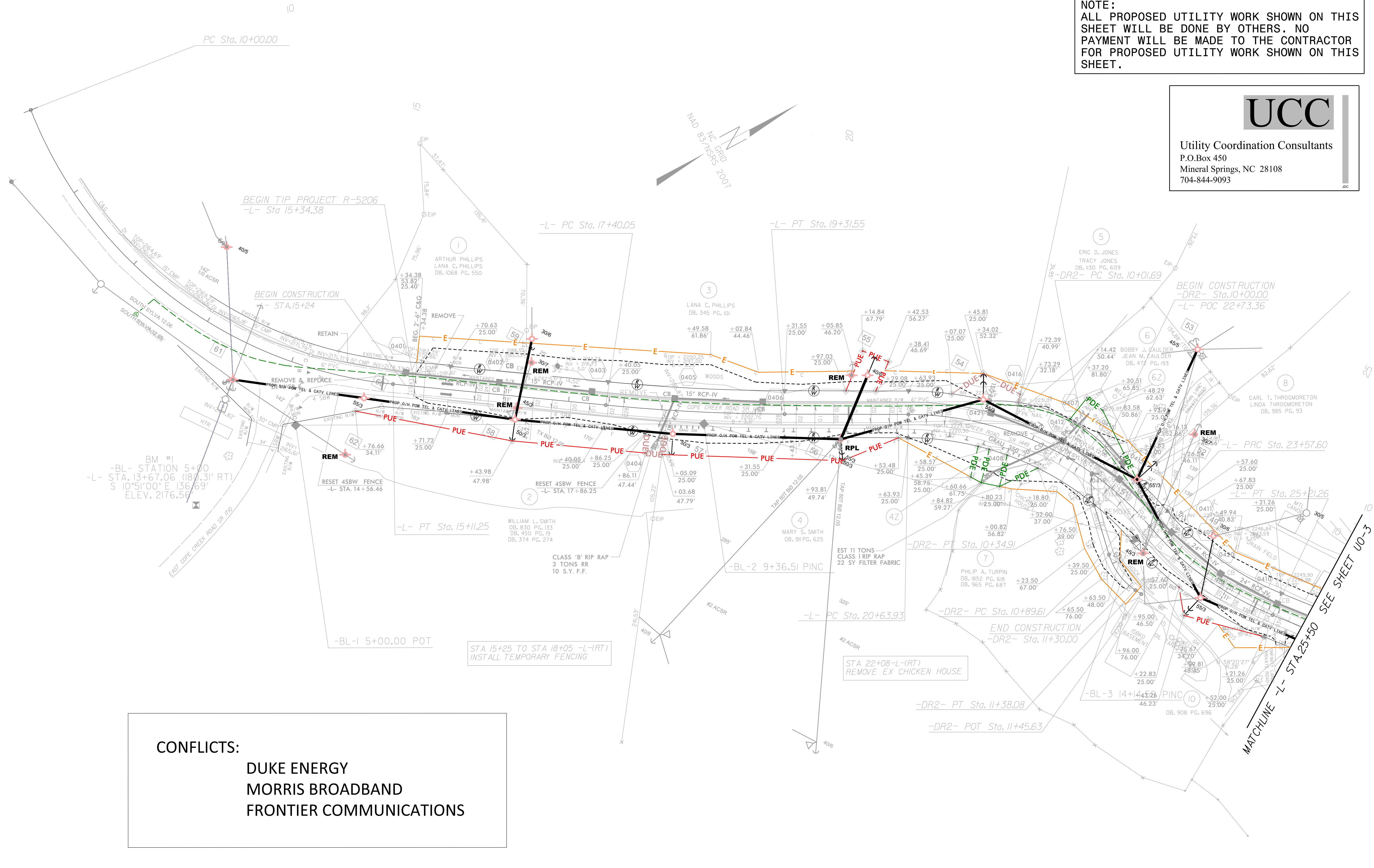
Roger Worthington, P.E. UTILITIES SECTION ENGINEER

UTILITIES BY OTHERS

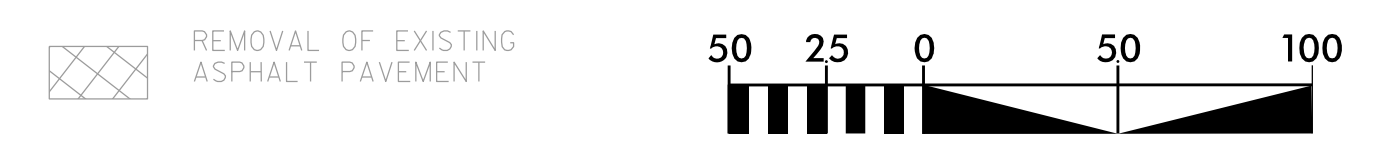
NOTE:
 ALL PROPOSED UTILITY WORK SHOWN ON THIS SHEET WILL BE DONE BY OTHERS. NO PAYMENT WILL BE MADE TO THE CONTRACTOR FOR PROPOSED UTILITY WORK SHOWN ON THIS SHEET.



Utility Coordination Consultants
 P.O.Box 450
 Mineral Springs, NC 28108
 704-844-9093



CONFLICTS:
 DUKE ENERGY
 MORRIS BROADBAND
 FRONTIER COMMUNICATIONS



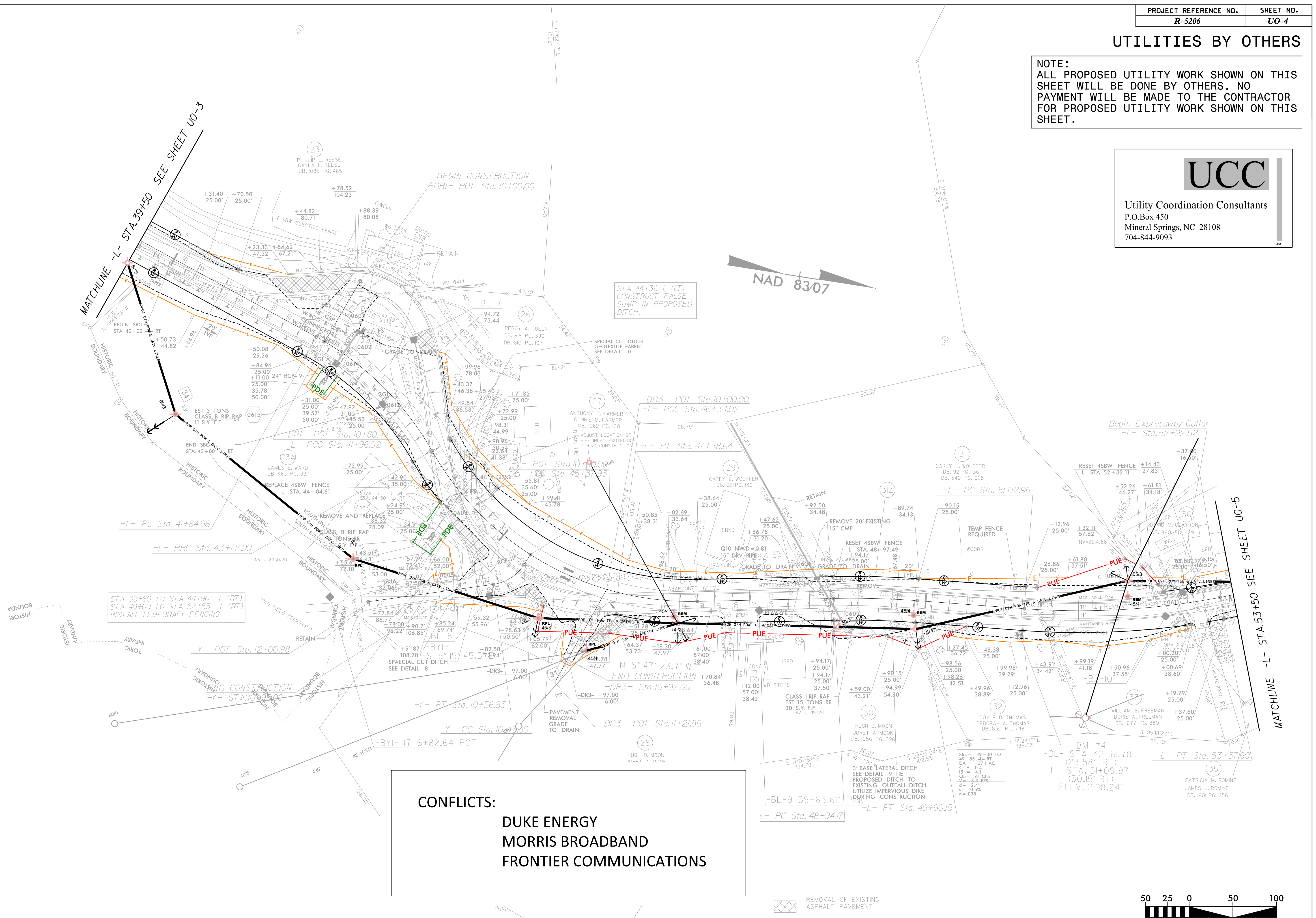
MATCHLINE -L- STA. 25+50 SEE SHEET UO-3

UTILITIES BY OTHERS

NOTE:
 ALL PROPOSED UTILITY WORK SHOWN ON THIS SHEET WILL BE DONE BY OTHERS. NO PAYMENT WILL BE MADE TO THE CONTRACTOR FOR PROPOSED UTILITY WORK SHOWN ON THIS SHEET.



Utility Coordination Consultants
 P.O.Box 450
 Mineral Springs, NC 28108
 704-844-9093



STA 39+60 TO STA 44+90 -L(RT)
 STA 49+00 TO STA 52+55 -L(RT)
 INSTALL TEMPORARY FENCING

CONFLICTS:
 DUKE ENERGY
 MORRIS BROADBAND
 FRONTIER COMMUNICATIONS

REMOVAL OF EXISTING ASPHALT PAVEMENT

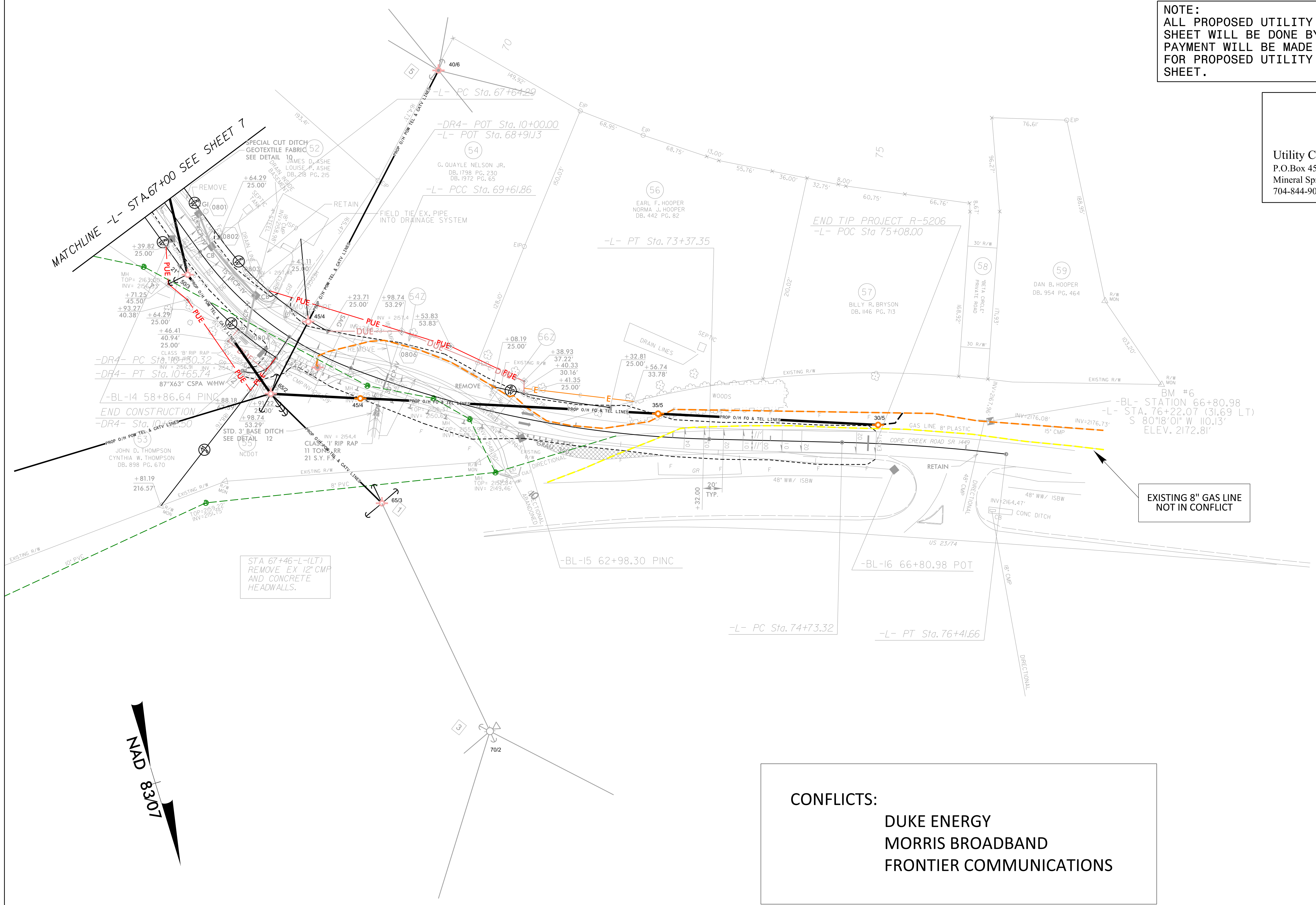


UTILITIES BY OTHERS

NOTE:
 ALL PROPOSED UTILITY WORK SHOWN ON THIS SHEET WILL BE DONE BY OTHERS. NO PAYMENT WILL BE MADE TO THE CONTRACTOR FOR PROPOSED UTILITY WORK SHOWN ON THIS SHEET.



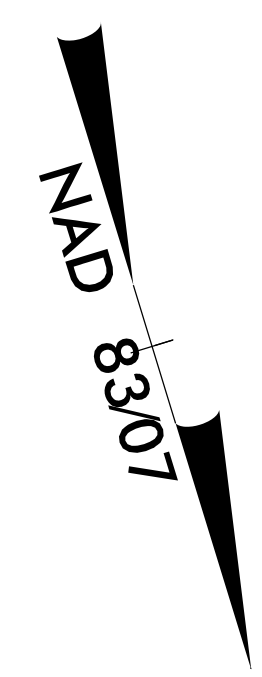
Utility Coordination Consultants
 P.O.Box 450
 Mineral Springs, NC 28108
 704-844-9093



EXISTING 8" GAS LINE NOT IN CONFLICT

STA 67+46-L(LT)
 REMOVE EX 12" CMP
 AND CONCRETE
 HEADWALLS.

CONFLICTS:
 DUKE ENERGY
 MORRIS BROADBAND
 FRONTIER COMMUNICATIONS



REMOVAL OF EXISTING ASPHALT PAVEMENT

