

GEOTECHNICAL ENGINEER

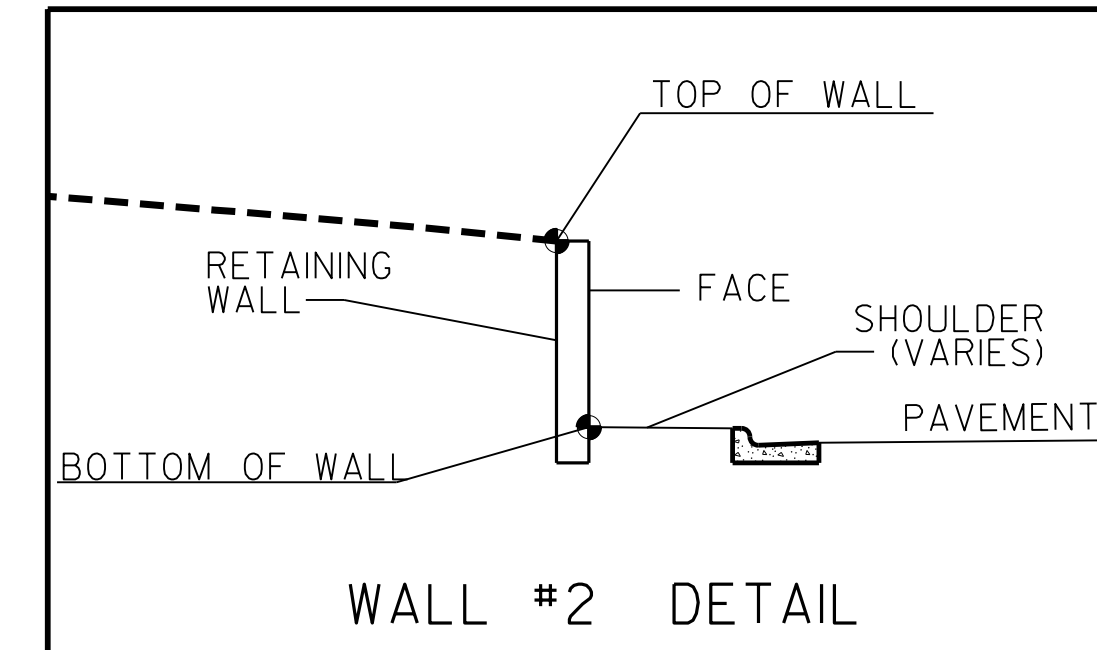
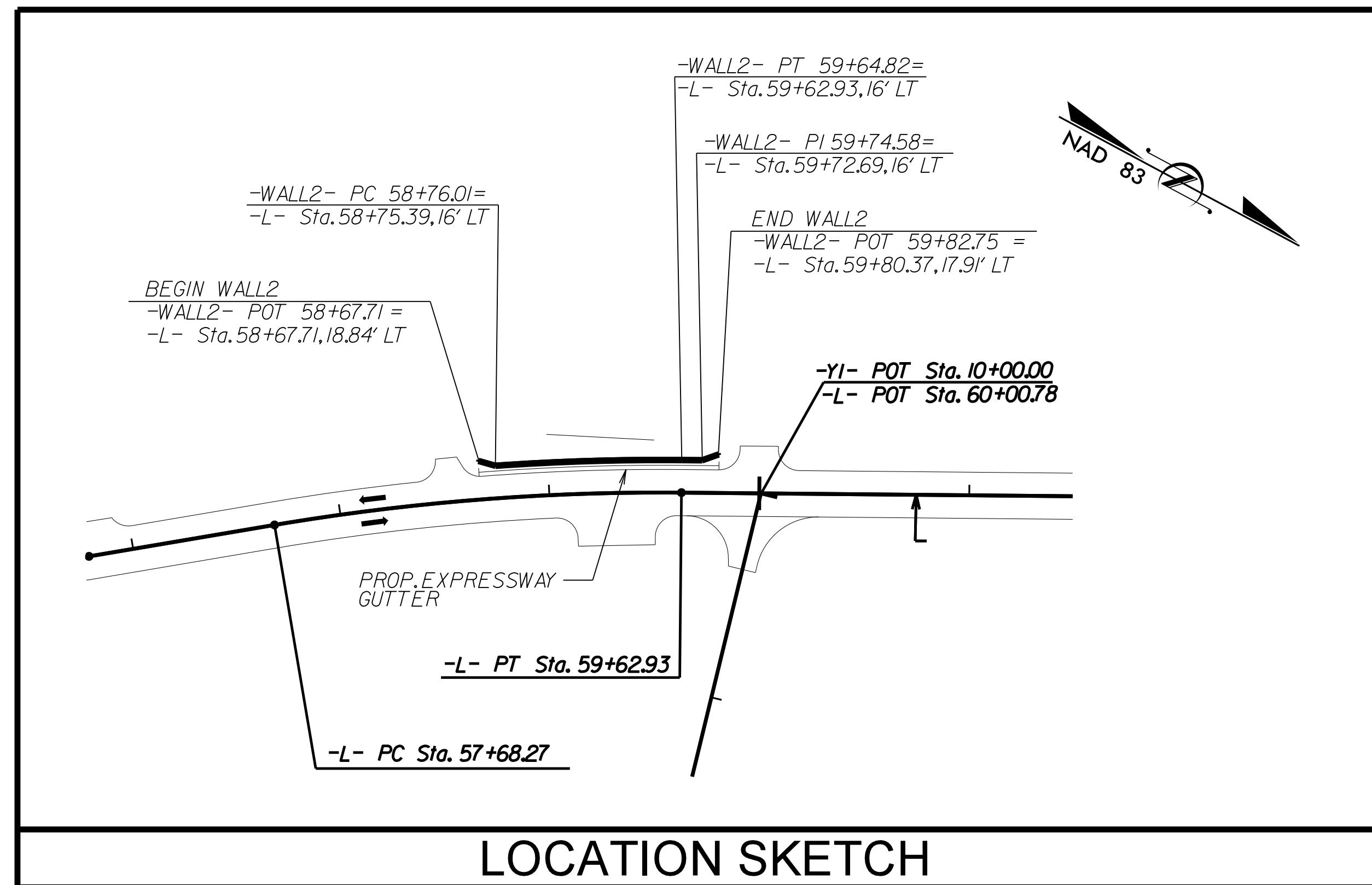
ENGINEER

**NORTH CAROLINA PROFESSIONAL ENGINEER SEAL 29869**

Slone C. Clark

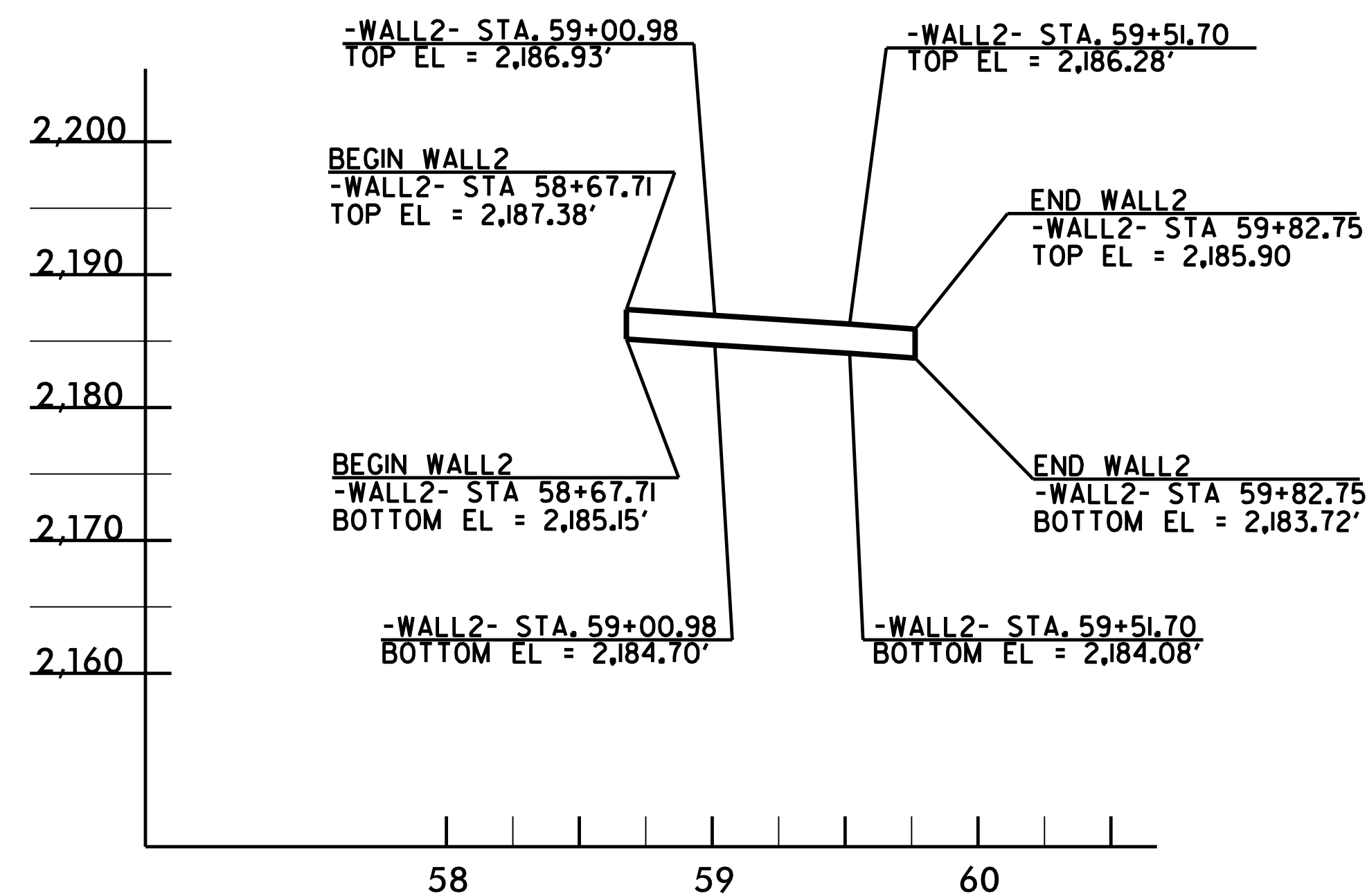
5/6/2015

SIGNATURE DATE SIGNATURE DATE



**ESTIMATED WALL QUANTITY**

RETAINING WALL NO.	CAST-IN-PLACE GRAVITY RETAINING WALL (SQUARE FEET)
2	245
	SIMULATED STONE FORM LINER FINISH (SQUARE FEET)
2	245



NOTE: SEE LOCATION SKETCH FOR WALL OFFSETS AND TURNING POINT LOCATIONS

PROJECT NO.: R-5206

JACKSON COUNTY

STATION: 58+67.71 -L- TO 59+80.37 -L-

SHEET 2 OF 4

**NORTH CAROLINA DEPARTMENT OF TRANSPORTATION DIVISION OF HIGHWAYS**

**GEOTECHNICAL ENGINEERING UNIT**

**CAST-IN-PLACE GRAVITY RETAINING WALL**

REVISIONS						SHEET NO.
NO.	BY	DATE	NO.	BY	DATE	
1			3			W2
2			4			

PREPARED BY: EJS	DATE: 4/15
REVIEWED BY: SCC	DATE: 4/15