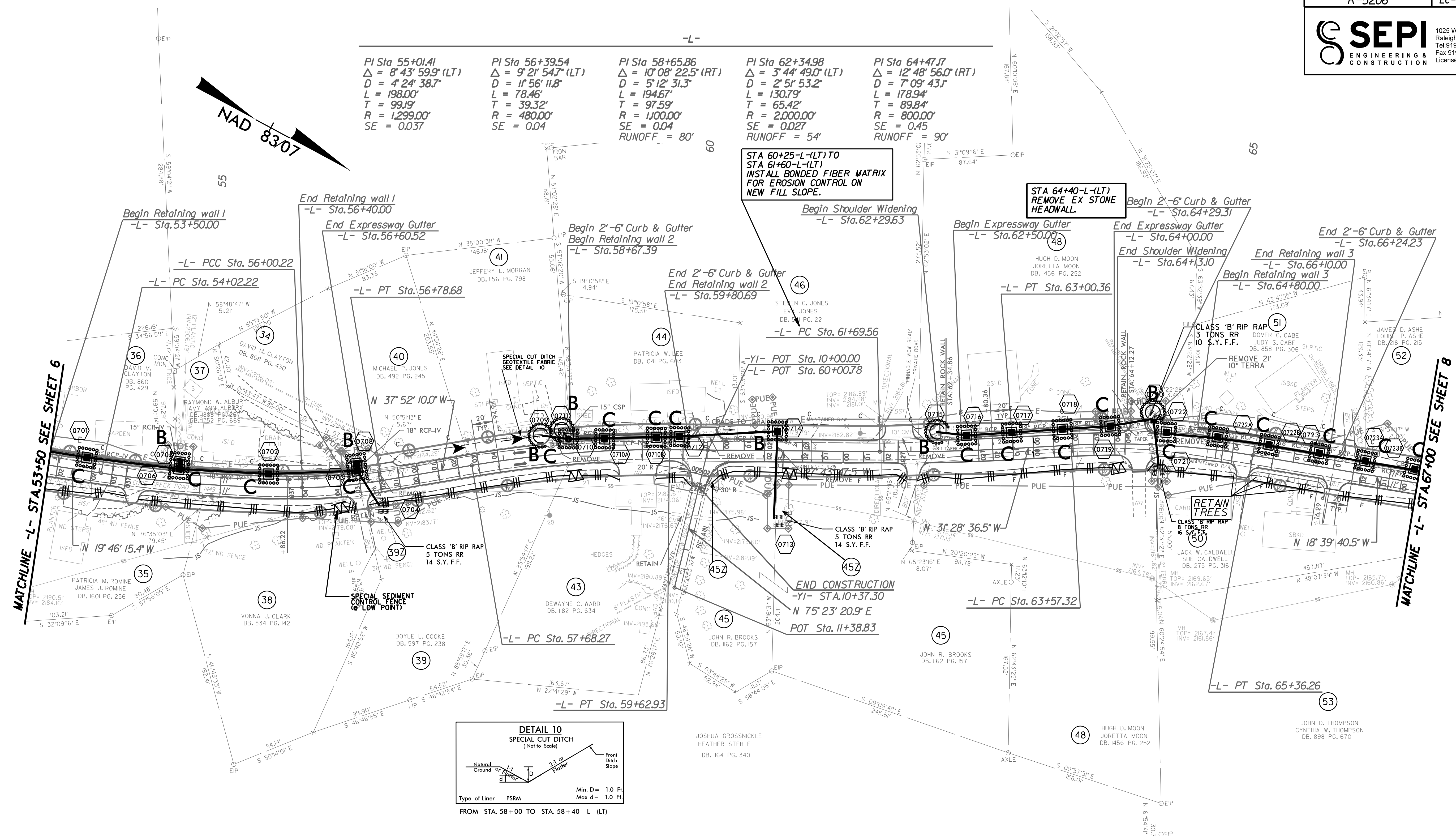
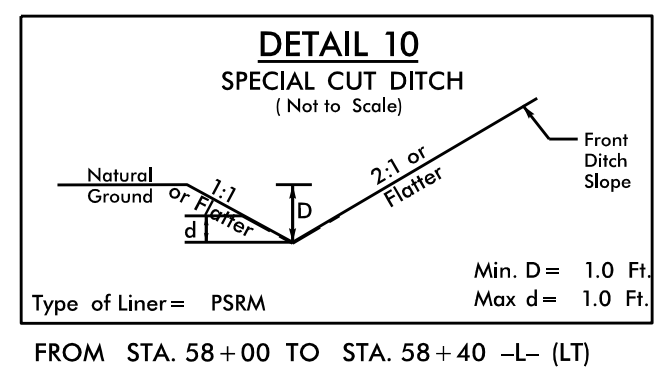


<p>PI Sta 55+01.41 Δ = 8' 43" 59.9" (LT) D = 4' 24" 38.7" L = 198.00' T = 99.19' R = 1,299.00' SE = 0.037</p>	<p>PI Sta 56+39.54 Δ = 9' 21" 54.7" (LT) D = 11' 56" 11.8" L = 78.46' T = 39.32' R = 480.00' SE = 0.04</p>	<p>PI Sta 58+65.86 Δ = 10' 08" 22.5" (RT) D = 5' 12" 31.3" L = 194.67' T = 97.59' R = 1,100.00' SE = 0.04 RUNOFF = 80'</p>	<p>PI Sta 62+34.98 Δ = 3' 44" 49.0" (LT) D = 2' 51" 53.2" L = 130.79' T = 65.42' R = 2,000.00' SE = 0.027 RUNOFF = 54'</p>	<p>PI Sta 64+47.17 Δ = 12' 48" 56.0" (RT) D = 7' 09" 43.1" L = 178.94' T = 89.84' R = 800.00' SE = 0.45 RUNOFF = 90'</p>
---	--	--	--	--

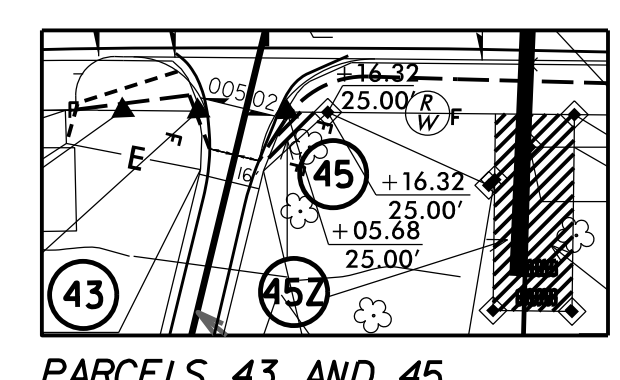


STA 60+25-L(LT) TO STA 61+60-L(LT)
INSTALL BONDED FIBER MATRIX FOR EROSION CONTROL ON NEW FILL SLOPE.

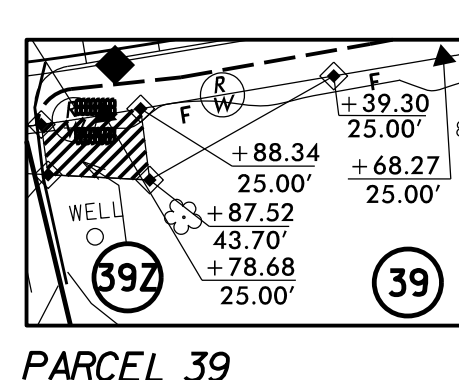
STA 64+40-L(LT)
REMOVE EX STONE HEADWALL.



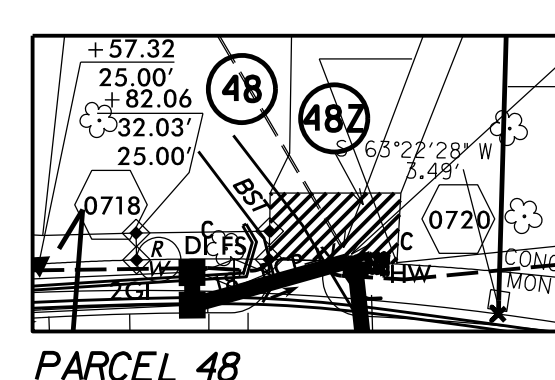
Z CLAIM DETAILS FOR PARCELS 39, 45 AND 48



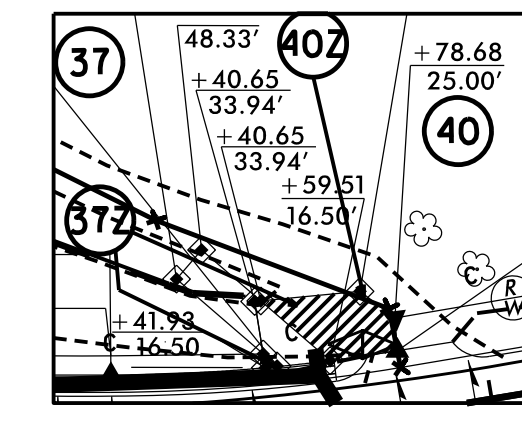
PARCELS 43 AND 45



PARCEL 39



PARCEL 48



PARCELS 37 AND 40

RADI AT DRIVEWAYS ARE 10' UNLESS SHOWN OTHERWISE

NOTE: SEE PLAN SHEET 10 FOR -L- PROFILE

6/21/2013 - ROW Revision Combined parcels 45 & 47 into parcel 45.CIT