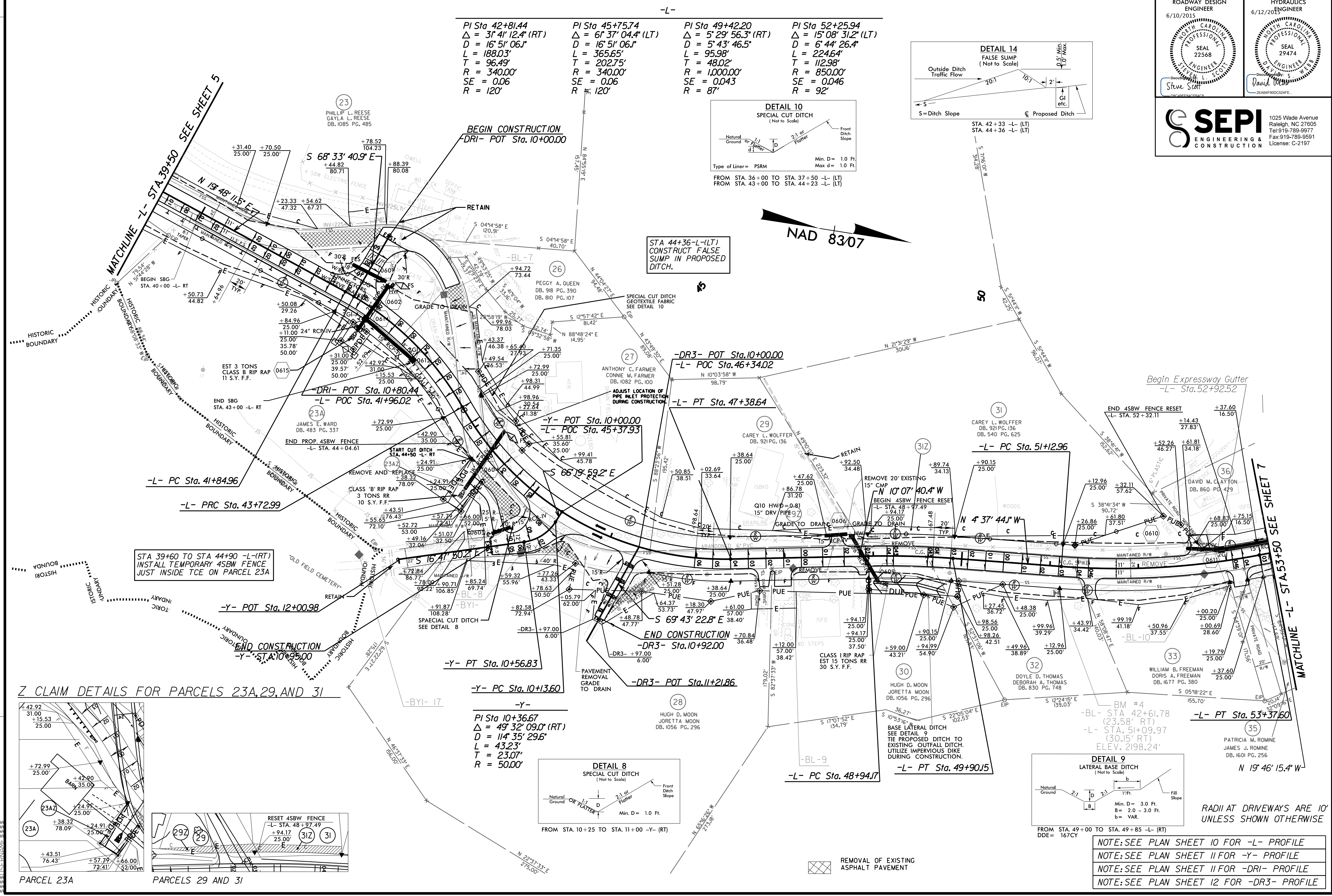


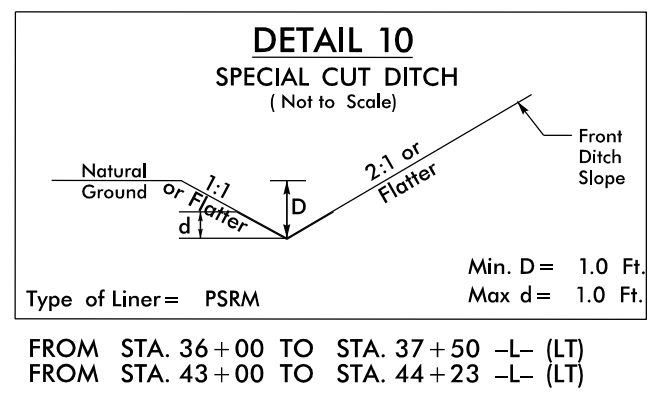
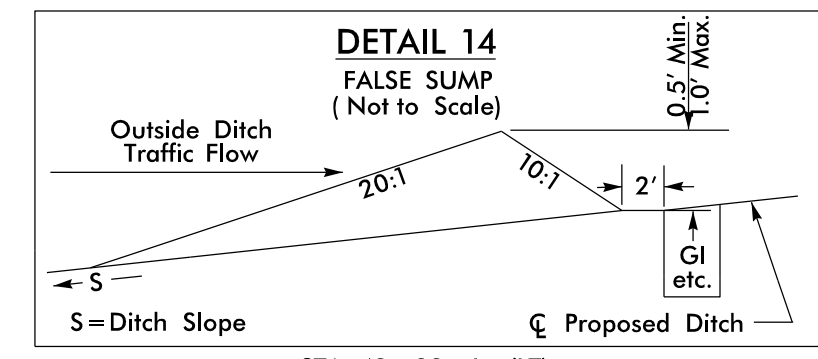
PROJECT REFERENCE NO. <b>R-5206</b>	SHEET NO. <b>6</b>
RW SHEET NO.	
ROADWAY DESIGN ENGINEER 6/10/2015	HYDRAULICS ENGINEER 6/12/2015
1025 Wade Avenue Raleigh, NC 27605 Tel: 919-789-9977 Fax: 919-789-9591 License: C-2197	

5/14/15

REVISIONS



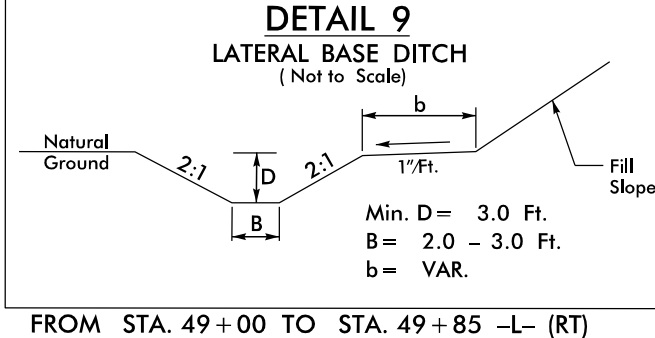
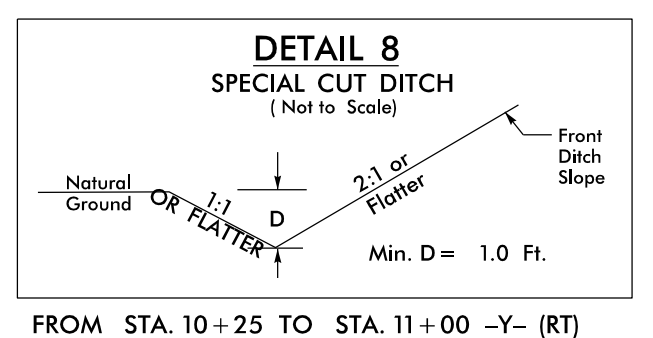
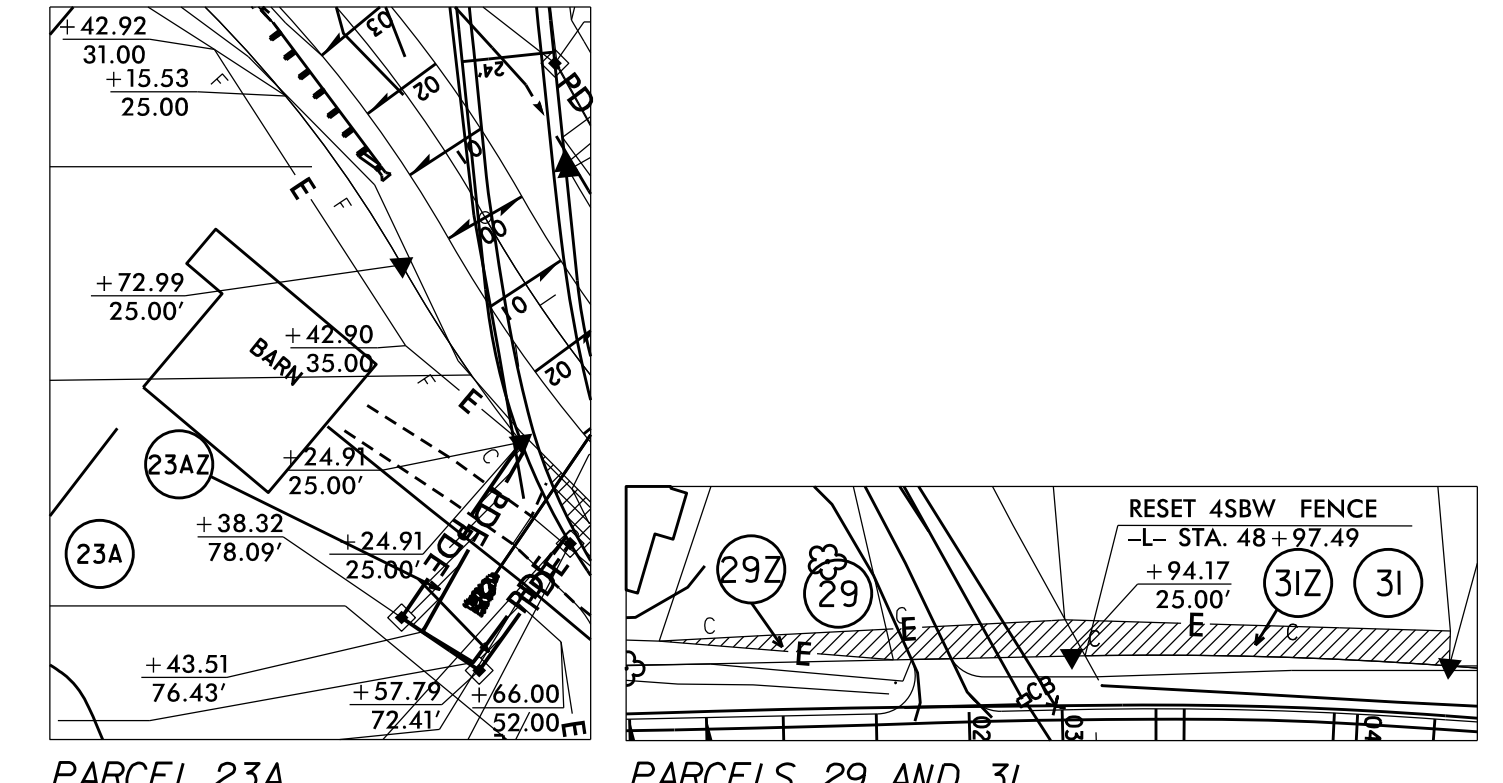
PI Sta 42+81.44 $\Delta = 31' 41" 12.4'$ (RT) $D = 16' 51" 06.1'$ $L = 188.03'$ $T = 96.49'$ $R = 340.00'$ $SE = 0.06$ $R = 120'$	PI Sta 45+75.74 $\Delta = 61' 37" 04.4'$ (LT) $D = 16' 51" 06.1'$ $L = 365.65'$ $T = 202.75'$ $R = 340.00'$ $SE = 0.06$ $R = 120'$	PI Sta 49+42.20 $\Delta = 5' 29' 56.3'$ (RT) $D = 5' 43' 46.5'$ $L = 95.98'$ $T = 48.02'$ $R = 1000.00'$ $SE = 0.043$ $R = 87'$	PI Sta 52+25.94 $\Delta = 15' 08' 31.2'$ (LT) $D = 6' 44' 26.4'$ $L = 224.64'$ $T = 112.98'$ $R = 850.00'$ $SE = 0.046$ $R = 92'$
--	---	--	--



STA 44+36-L-(LT)  
 CONSTRUCT FALSE  
 SUMP IN PROPOSED  
 DITCH.

NAD 8307

Z CLAIM DETAILS FOR PARCELS 23A, 29, AND 31



NOTE: SEE PLAN SHEET 10 FOR -L- PROFILE  
 NOTE: SEE PLAN SHEET 11 FOR -Y- PROFILE  
 NOTE: SEE PLAN SHEET 11 FOR -DRI- PROFILE  
 NOTE: SEE PLAN SHEET 12 FOR -DR3- PROFILE

RADI AT DRIVEWAYS ARE 10'  
 UNLESS SHOWN OTHERWISE