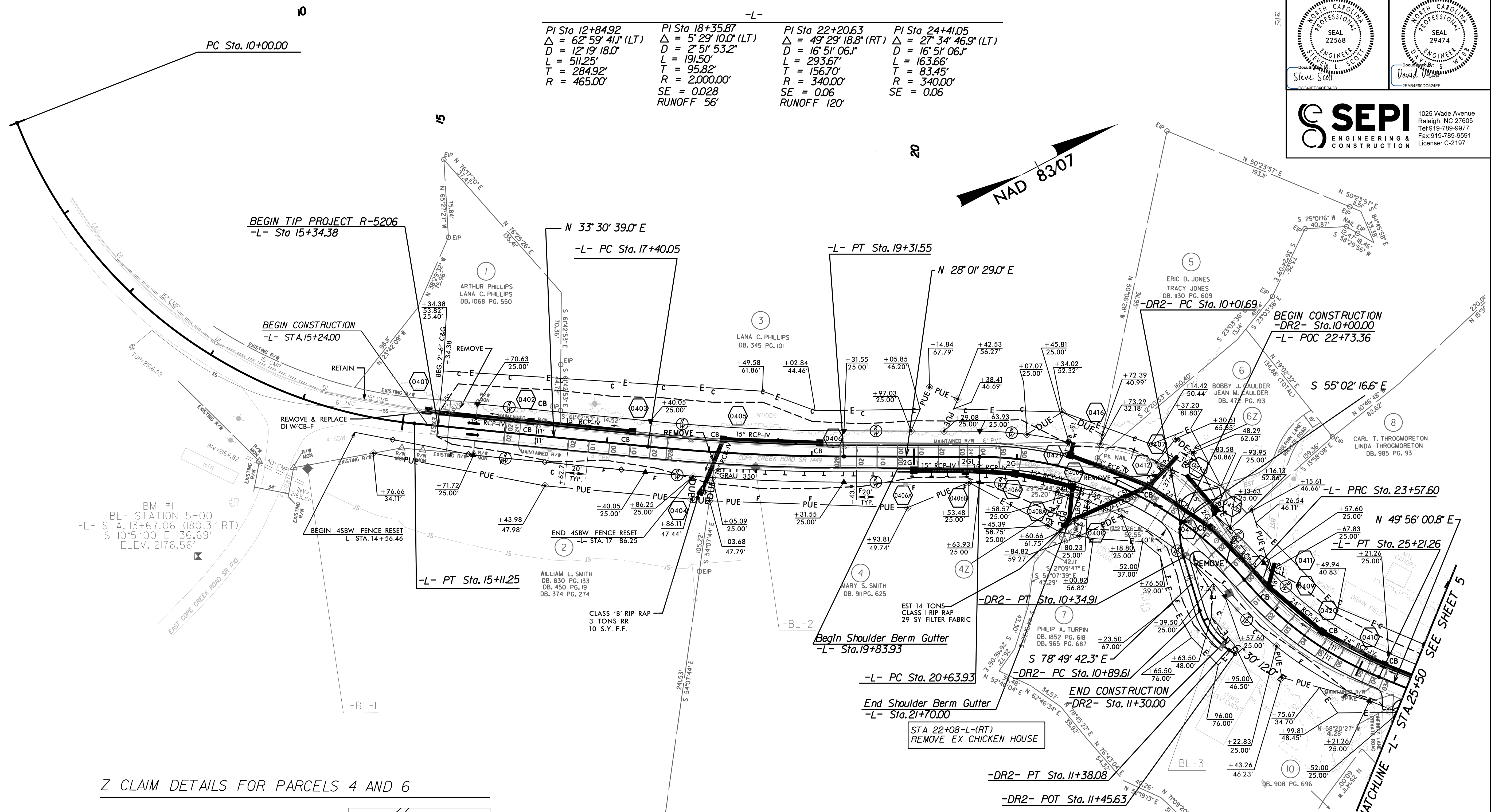


PROJECT REFERENCE NO. R-5206		SHEET NO. 4	
RW SHEET NO.			
ROADWAY DESIGN ENGINEER 6/10/2015		HYDRAULICS ENGINEER 6/12/2015	

SEPI
ENGINEERING & CONSTRUCTION

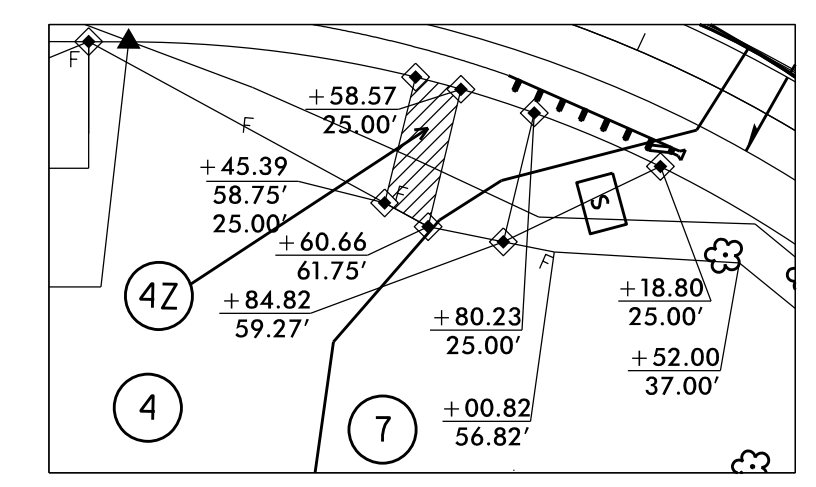
1025 Wade Avenue
Raleigh, NC 27605
Tel: 919-789-9977
Fax: 919-789-9591
License: C-2197

PI Sta 12+84.92 $\Delta = 62^{\circ} 59' 41''$ (LT) $D = 12^{\circ} 19' 18.0''$ $L = 511.25'$ $T = 284.92'$ $R = 465.00'$	PI Sta 18+35.87 $\Delta = 5^{\circ} 29' 10.0''$ (LT) $D = 2^{\circ} 51' 53.2''$ $L = 191.50'$ $T = 95.82'$ $R = 2,000.00'$ $SE = 0.028$ $RUNOFF 56'$	PI Sta 22+20.63 $\Delta = 49^{\circ} 29' 18.8''$ (RT) $D = 16^{\circ} 51' 06.1''$ $L = 293.67'$ $T = 156.70'$ $R = 340.00'$ $SE = 0.06$ $RUNOFF 120'$	PI Sta 24+41.05 $\Delta = 27^{\circ} 34' 46.9''$ (LT) $D = 16^{\circ} 51' 06.1''$ $L = 163.66'$ $T = 83.45'$ $R = 340.00'$ $SE = 0.06$
--	---	--	--

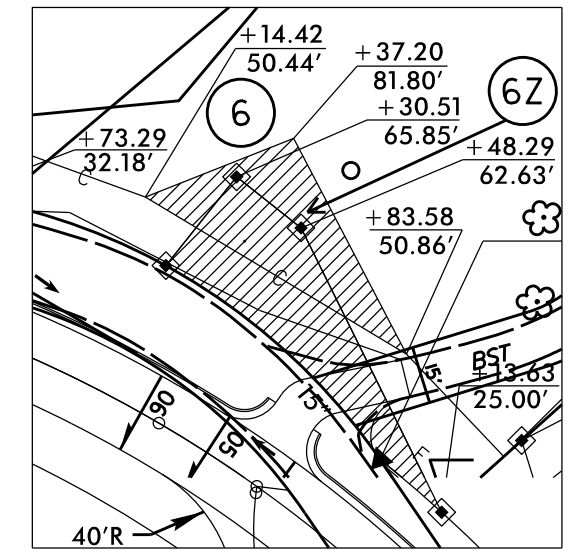


BM #1
-BL- STATION 5+00
STA. 13+67.06 (180.31' RT)
S 10°51'00" E 136.69'
ELEV. 2176.56'

Z CLAIM DETAILS FOR PARCELS 4 AND 6



PARCELS 4 AND 7



PARCEL 6

-DR2- PI Sta 10+18.54 $\Delta = 23^{\circ} 47' 25.7''$ (LT) $D = 71^{\circ} 37' 11.0''$ $L = 33.22'$ $T = 16.85'$ $R = 80.00'$	PI Sta 11+14.86 $\Delta = 39^{\circ} 40' 05.8''$ (LT) $D = 8^{\circ} 51' 04.0''$ $L = 48.46'$ $T = 25.25'$ $R = 70.00'$
--	--

REMOVAL OF EXISTING ASPHALT PAVEMENT

RADI AT DRIVEWAYS ARE 10' UNLESS SHOWN OTHERWISE
NOTE: SEE PLAN SHEET 9 FOR -L- PROFILE
NOTE: SEE PLAN SHEET 11 FOR -DR2- PROFILE

REVISIONS

5/14/14/99
10
15
20
14
17.