

09/08/99

See Sheet 1-A For Index of Sheets
See Sheet 1-B For Conventional Symbols

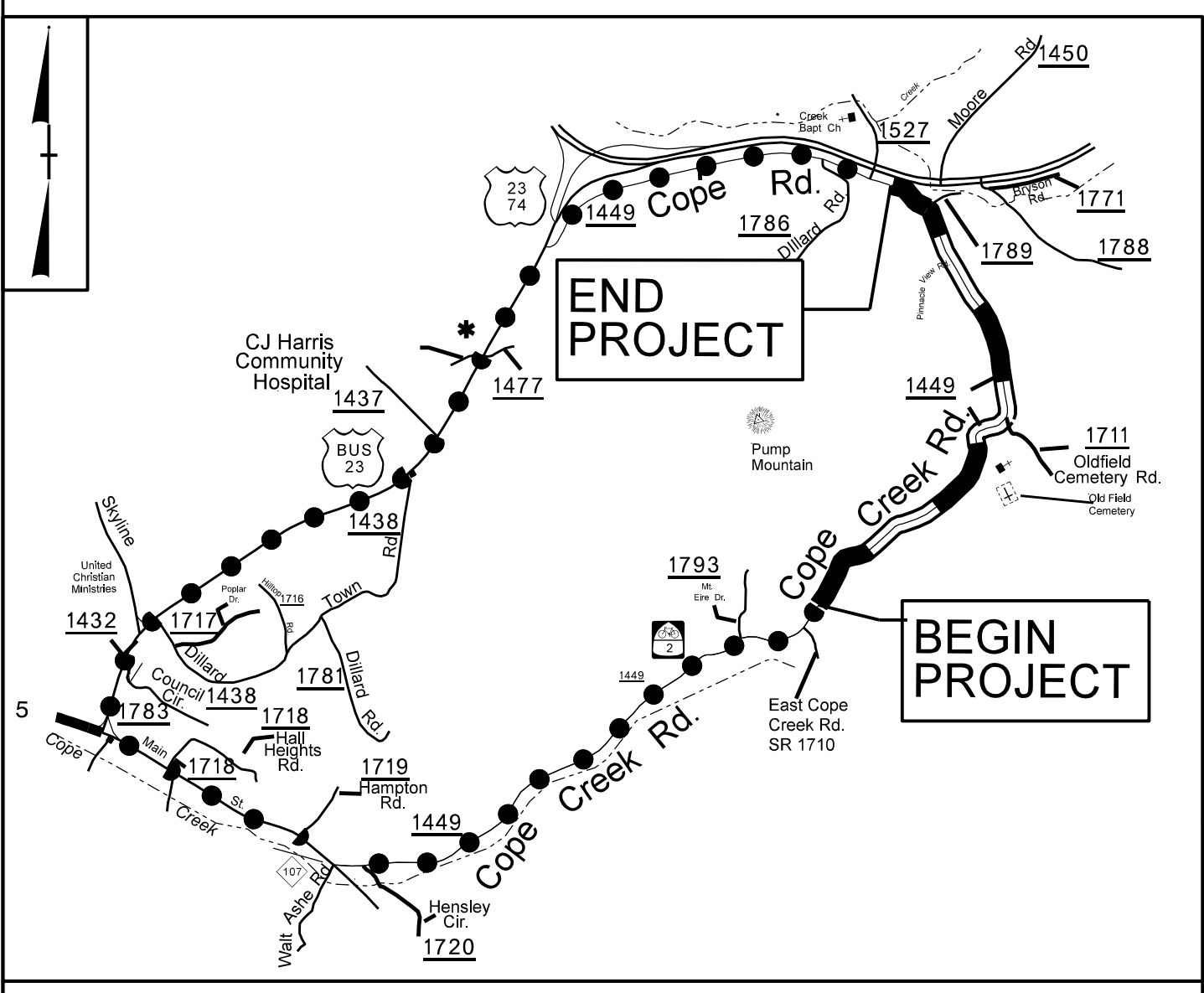
STATE OF NORTH CAROLINA
DIVISION OF HIGHWAYS

JACKSON COUNTY

LOCATION: SR 1449 (COPE CREEK ROAD) FROM
SR 1710 (EAST COPE CREEK ROAD) TO US 23/74
TYPE OF WORK: GRADING, DRAINAGE, PAVING, AND WALLS

STATE	STATE PROJECT REFERENCE NO.	SHEET NO.	TOTAL SHEETS
N.C.	R-5206	1	
STATE PROJ. NO.	F.A. PROJ. NO.	DESCRIPTION	
42974.1.1		P.E.	
42974.2.1		RW	
42974.3.3		CONST	

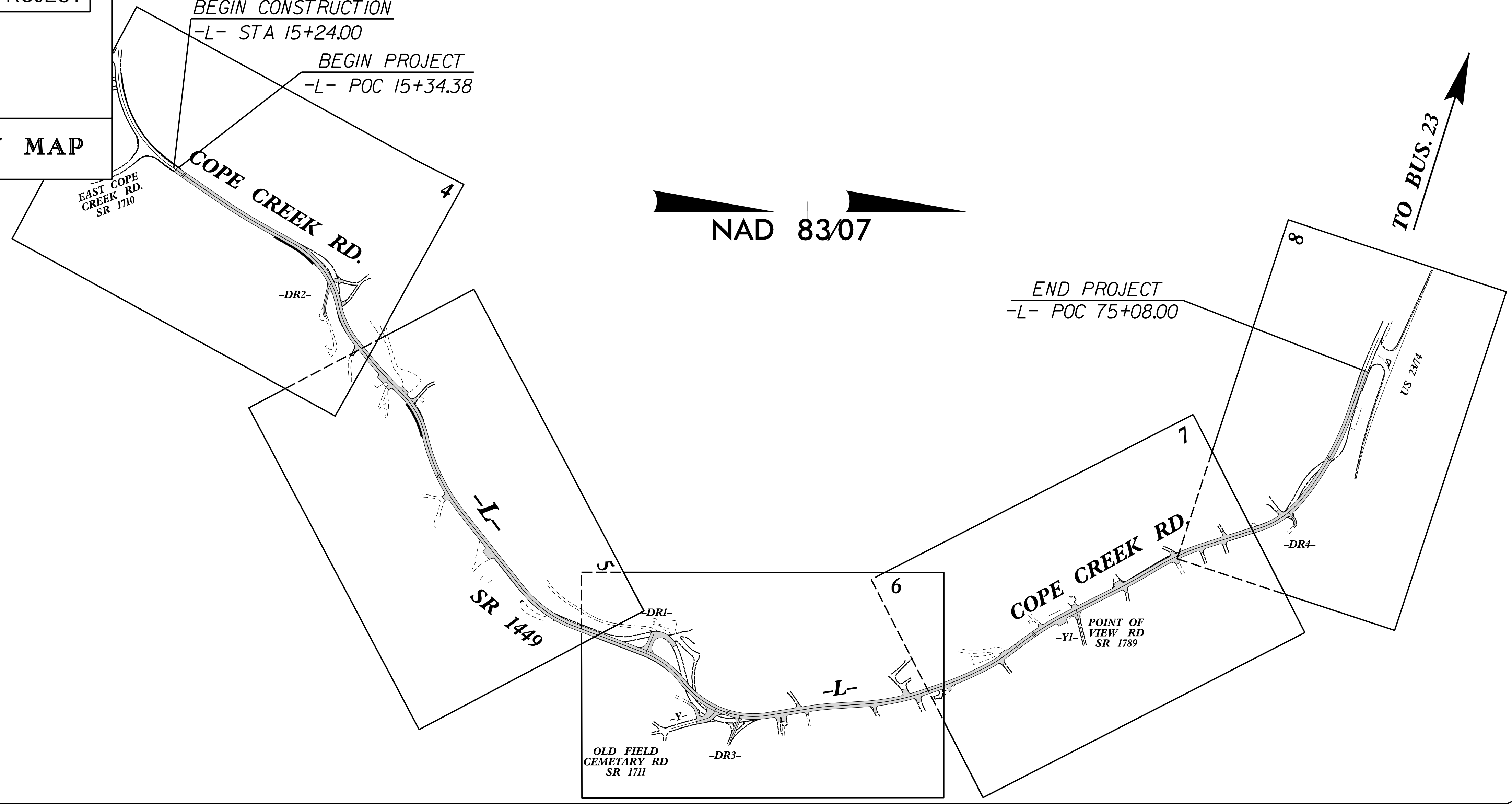
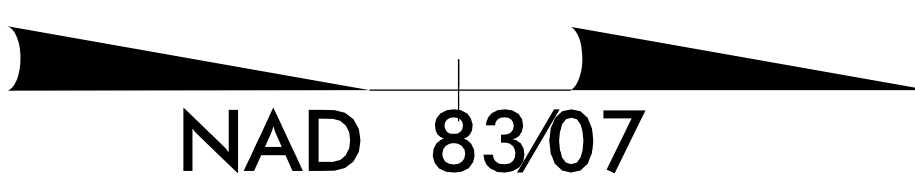
PROJECT: R-5206



DETOUR VICINITY MAP

TO SYLVIA

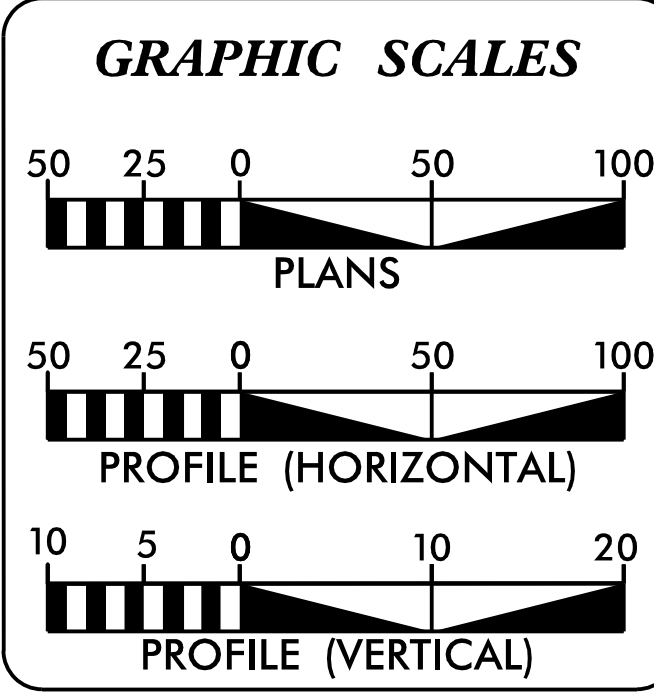
BEGIN CONSTRUCTION
-L- STA 15+24.00
BEGIN PROJECT
-L- POC 15+34.38



TO BUS. 23

END PROJECT
-L- POC 75+08.00

CONTRACT: C203491



DESIGN DATA

ADT 2012	=	3250
ADT 2032	=	4350
DHV	=	12 %
D	=	60 %
T	=	1 %
V	=	35 MPH

PROJECT LENGTH

LENGTH ROADWAY PROJECT R-5206 = 1.131 Miles

SEPI
ENGINEERING & CONSTRUCTION
1025 Wade Avenue
Raleigh, NC 27605
Tel: 919-789-9977
Fax: 919-789-9591
License: C-2197

2012 STANDARD SPECIFICATIONS	
RIGHT OF WAY DATE: JUNE 15, 2012	STEVE SCOTT, PE PROJECT ENGINEER
LETTING DATE: JULY 21, 2015	BEN CRAWFORD, PE PROJECT DESIGNER
NCDOT CONTACT	STEPHEN WILLIAMS DIVISION PROJECT MANAGER-NCDOT

HYDRAULICS ENGINEER

DocuSigned by:
David Webb
SIGNATURE:

DocuSigned by:
Steve Scott
SIGNATURE:

ROADWAY DESIGN ENGINEER

DIVISION OF HIGHWAYS
STATE OF NORTH CAROLINA

\$\$\$\$\$ SYSTEM TIME\$\$\$\$\$
\$\$\$\$\$ DGN\$\$\$\$\$
\$\$\$\$\$ USERNAME\$\$\$\$\$