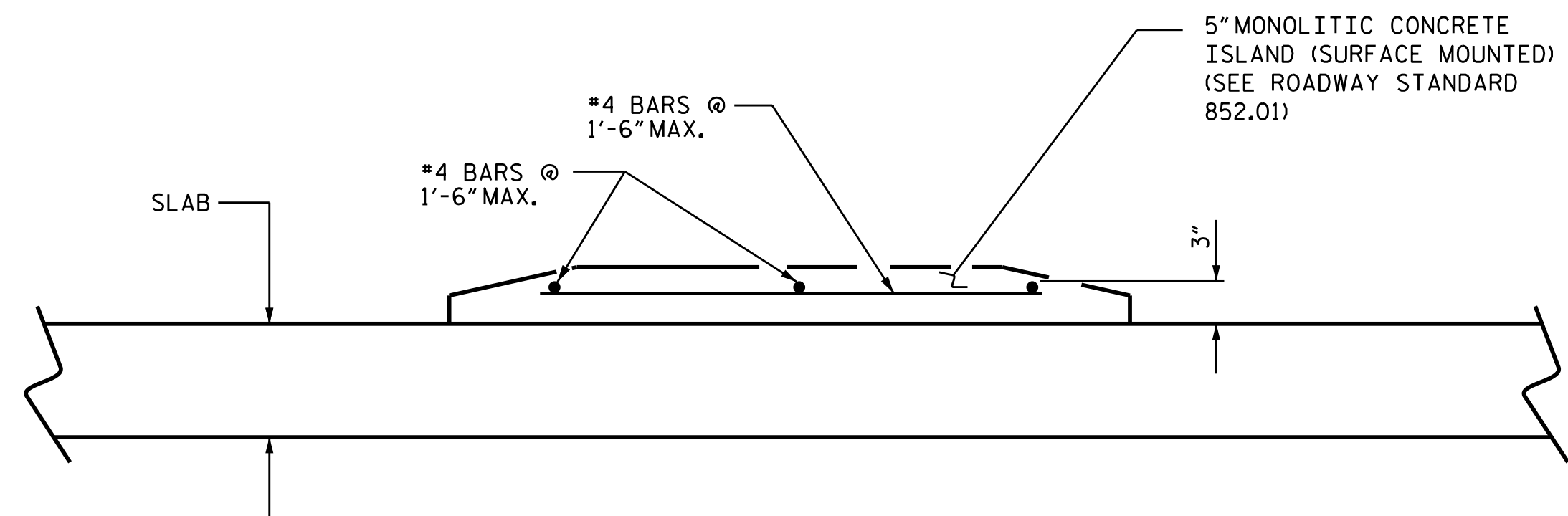
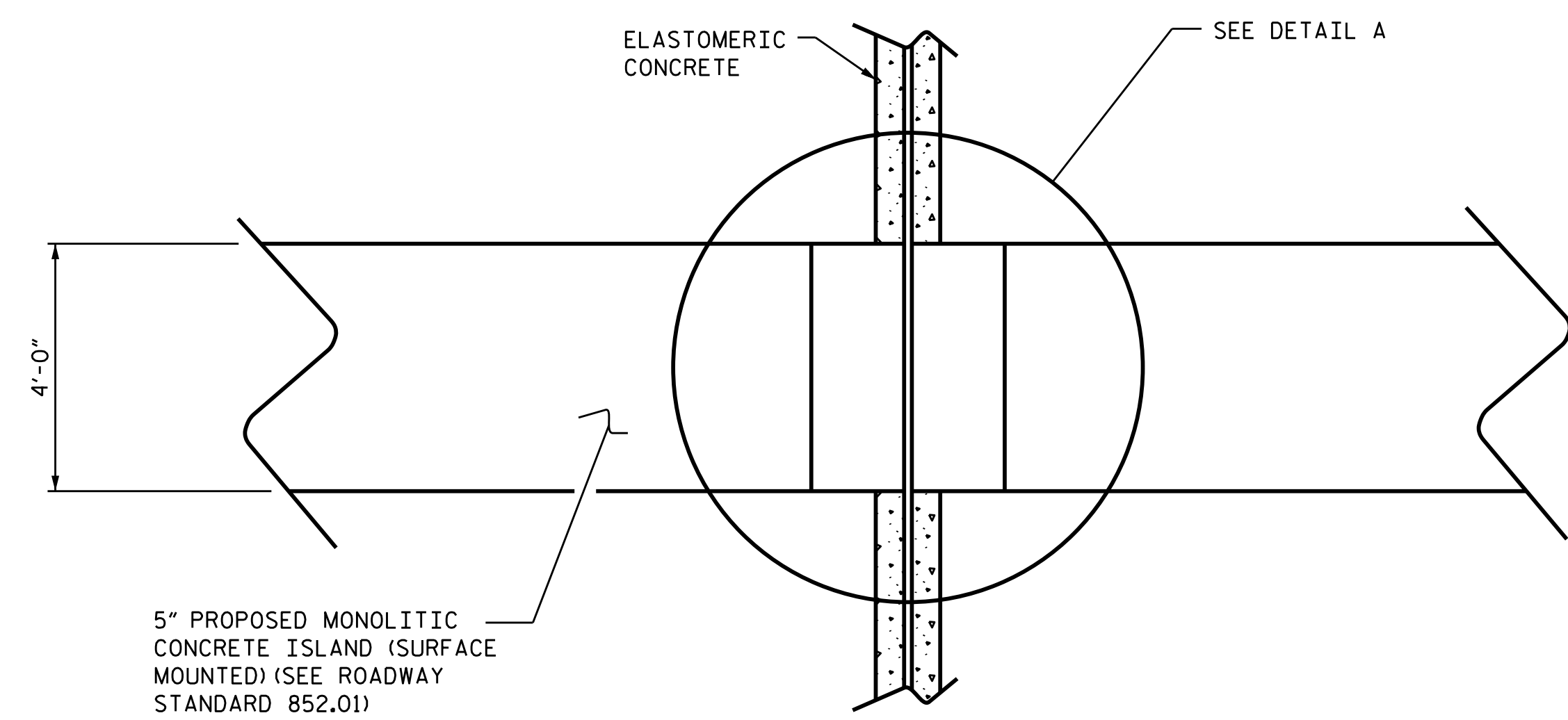


NOTES:

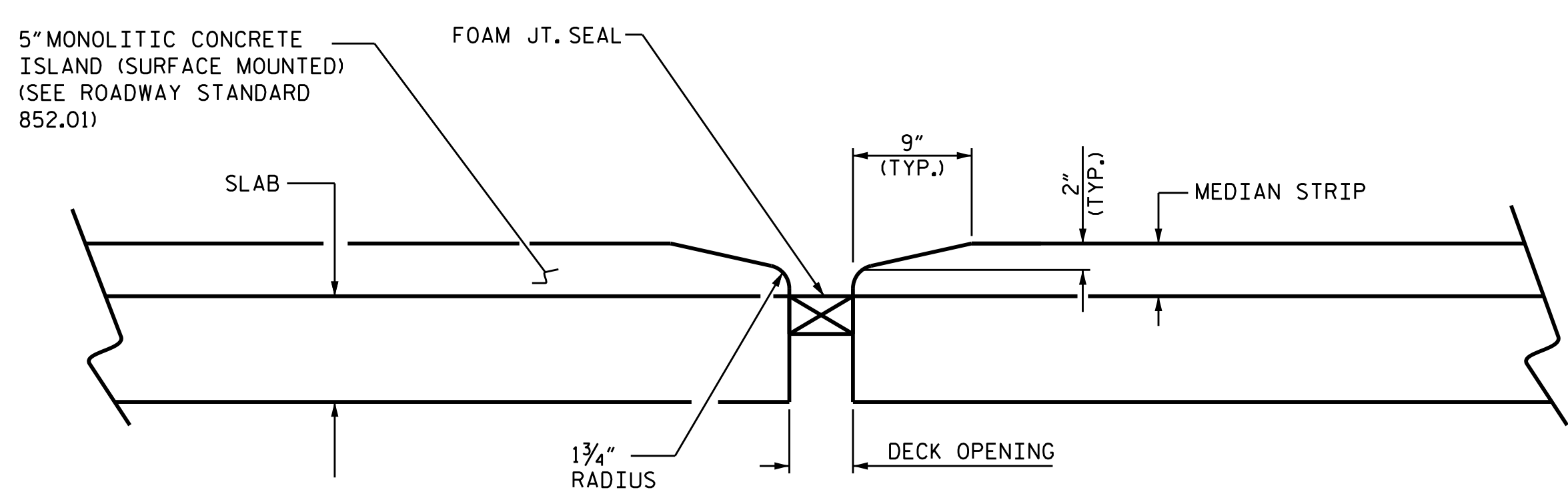
1. FOR 5" MONOLITHIC CONCRETE ISLAND (SURFACE MOUNTED) DETAIL SEE ROADWAY STANDARD NO. 852.01
2. THE ELASTOMERIC CONCRETE SHALL TERMINATE AT THE FACE OF THE CONCRETE MEDIAN
3. ALL REINFORCING STEEL IN CONCRETE MEDIANS SHALL BE EPOXY COATED.



REINFORCING STEEL DETAIL



5" PROPOSED MONOLITHIC CONCRETE ISLAND (SURFACE MOUNTED) (SEE ROADWAY STANDARD 852.01)



DETAIL A
(CONCRETE ISLAND AT THE JOINT)

PROJECT NO. W-5514
CUMBERLAND COUNTY
 BRIDGE NO.: 199

STATE OF NORTH CAROLINA
 DEPARTMENT OF TRANSPORTATION
 RALEIGH
 PERMANENT CONCRETE
 MEDIAN ON BRIDGE



DRAWN BY : M. WELDON DATE : 05/2015
 CHECKED BY : F. ASEFNIA DATE : 05/2015

REVISIONS						SHEET NO.
NO.	BY:	DATE:	NO.	BY:	DATE:	S-9
1			3			TOTAL SHEETS
2			4			9