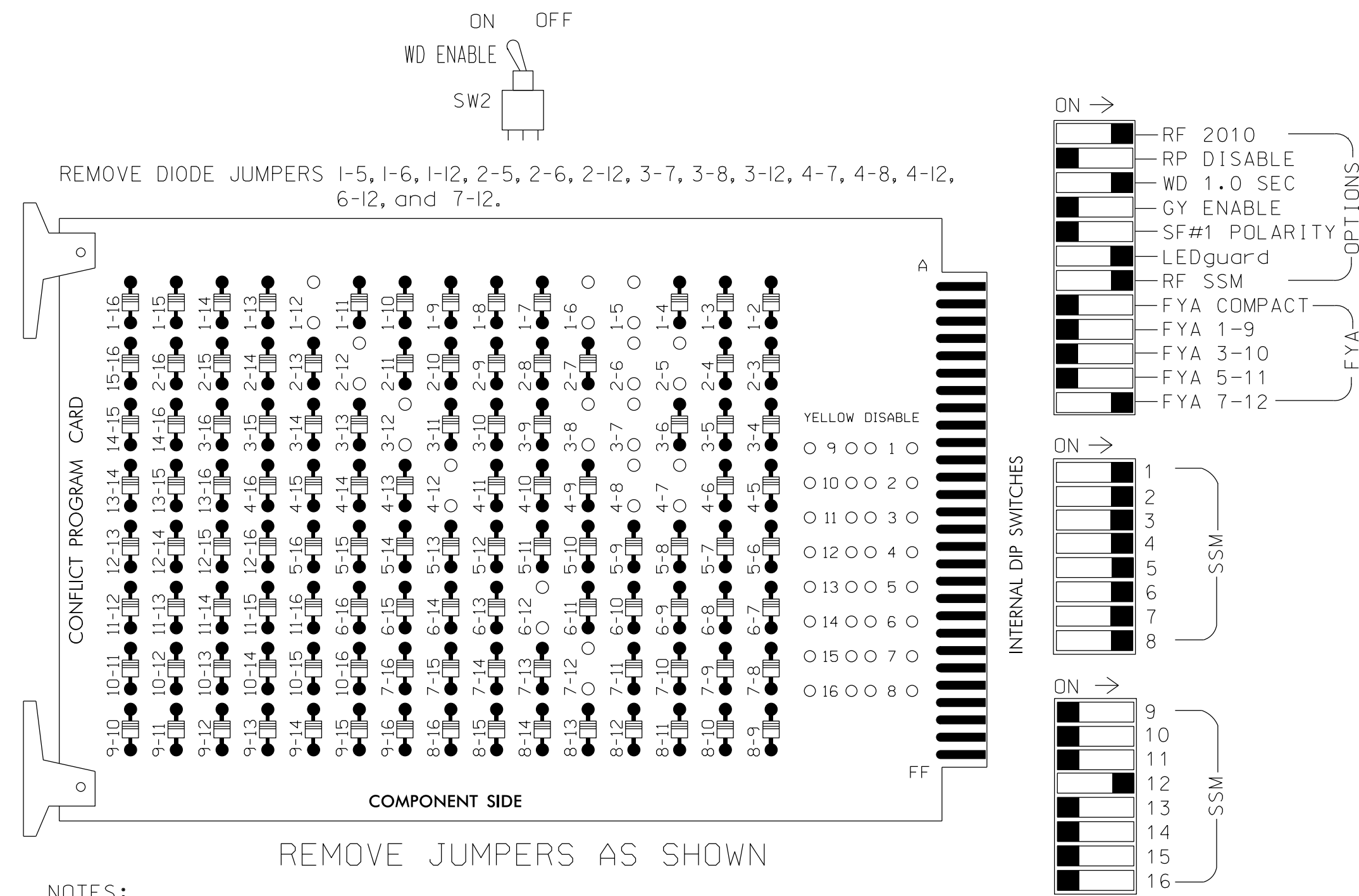


**EDI MODEL 2010ECL-NC CONFLICT MONITOR PROGRAMMING DETAIL**

(remove jumpers and set switches as shown)



**NOTES:**

- Card is provided with all diode jumpers in place. Removal of any jumper allows its channels to run concurrently.
- Make sure jumpers SEL2-SEL5 are present on the monitor board.
- Contractor to install New 2010ECL-NC Conflict Monitor as shown above.

**NOTES**

- To prevent "flash-conflict" problems, insert red flash program blocks for all unused vehicle load switches in the output file. The installer shall verify that signal heads flash in accordance with the Signal Plans.
- Ensure that Red Enable is active at all times during normal operation. To prevent Red Failures on unused monitor channels, tie unused red monitor inputs 9,10, 11,13,14,15 & 16 to load switch AC+ per the cabinet manufacturer's instructions.
- Enable Simultaneous Gap-Out for all phases.
- Program phases 2 and 6 for Variable Initial and Gap Reduction.
- Program phases 2 and 6 for Start Up In Green.
- Program phases 2 and 6 for Yellow Flash, and overlap 4 as Wag Overlaps.
- The cabinet and controller are part of the Fayetteville Signal System.

**EQUIPMENT INFORMATION**

CONTROLLER.....2070  
 CABINET .....SAFETRANS 332 (W/ AUX. FILE)  
 SOFTWARE .....ECONOLITE OASIS  
 CABINET MOUNT.....BASE  
 OUTPUT FILE POSITIONS...18 (W/ AUX. OUTPUT FILE)  
 LOAD SWITCHES USED.....S1,S2,S3,S4,S5,S6,S7,S8,S13  
 PHASES USED.....1,2,3,4,5,6,7,8  
 OVERLAP 'A'.....NONE  
 OVERLAP 'B'.....NONE  
 OVERLAP 'C'.....NONE  
 OVERLAP 'D'.....6+7

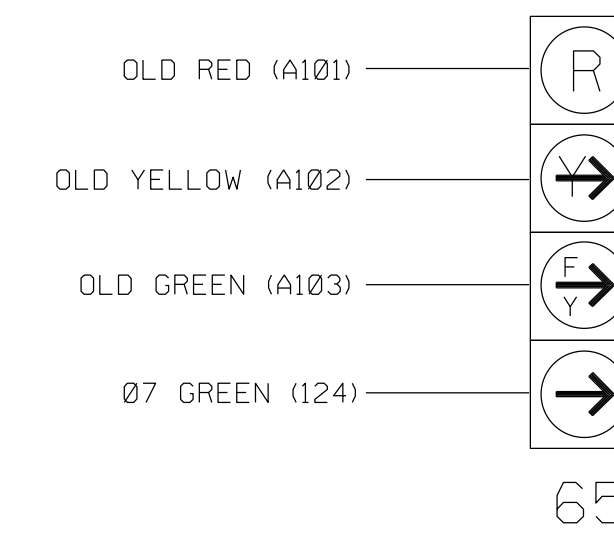
**SIGNAL HEAD HOOK-UP CHART**

LOAD SWITCH NO.	S1	S2	S2P	S3	S4	S4P	S5	S6	S6P	S7	S8	S8P	S9	S10	S11	S12	S13	S14
PHASE	1	2	2 PED	3	4	4 PED	5	6	6 PED	7	8	8 PED	OLA	OLB	SPARE	OLC	OLD	SPARE
SIGNAL HEAD NO.	11	21,22 23,24	NU	31	41,42 43	NU	51	61,62 63,64	NU	65★	71,72	81,82 83	NU	NU	NU	NU	65★	NU
RED		128			101			134			107							A101
YELLOW		129			102			135			108							
GREEN		130			103			136			109							
RED ARROW	125				116			131			122							
YELLOW ARROW	126				117			132			123							A102
FLASHING YELLOW ARROW																		A103
GREEN ARROW	127				118			133			124	124						

NU = Not Used  
 ★ See pictorial of head wiring in detail below.

**FYA SIGNAL WIRING DETAIL**

(wire signal head as shown)



**NOTE**

The sequence display for the signal head shown above requires special logic programming. See sheet 2 for programming instructions.

**INPUT FILE POSITION LAYOUT**

(front view)

FILE "I"	1	2	3	4	5	6	7	8	9	10	11	12	13	14
U	∅ 1	∅ 2/SYS	∅ 2/SYS	S	∅ 3	∅ 4	∅ 4	S	S	S	S	S	S	FS
L	1A	2A/S2A	2C/S2C	S	3A	4A	4C	S	S	S	S	S	S	DC ISOLATOR
	NOT USED	∅ 2/SYS	NOT USED	S	NOT USED	∅ 4	NOT USED	S	S	S	S	S	S	ST
		2B/S2B		S		4B		S	S	S	S	S	S	DC ISOLATOR
U	∅ 5	∅ 6/SYS	∅ 6/SYS	S	∅ 7	∅ 8	∅ 8	S	S	S	S	S	S	S
L	5A	6A/S6A	6C/S6C	S	7A	8A	8C	S	S	S	S	S	S	S
	NOT USED	∅ 6/SYS	NOT USED	S	∅ 7	∅ 8	NOT USED	S	S	S	S	S	S	S
		6B/S6B		S	7B	8B		S	S	S	S	S	S	S

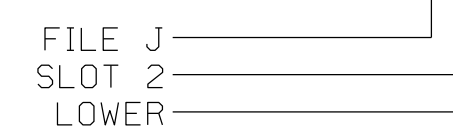
EX.: 1A, 2A, ETC. = LOOP NO.'S

FS = FLASH SENSE  
 ST = STOP TIME

**INPUT FILE CONNECTION & PROGRAMMING CHART**

LOOP NO.	LOOP TERMINAL	INPUT FILE POS.	PIN NO.	INPUT ASSIGNMENT NO.	DETECTOR NO.	NEMA PHASE	CALL	EXTEND	FULL TIME DELAY	STRETCH TIME	DELAY TIME
1A	TB2-1,2	I1U	56	18	1	1	Y	Y			
2A/S2A	TB2-5,6	I2U	39	1	2	2/SYS	Y	Y			
2B/S2B	TB2-7,8	I2L	43	5	12	2/SYS	Y	Y			
2C/S2C	TB2-9,10	I3U	63	25	32	2/SYS	Y	Y			
3A	TB4-5,6	I5U	58	20	3	3	Y	Y			
4A	TB4-9,10	I6U	41	3	4			Y		2.5	
4B	TB4-11,12	I6L	45	7	14	4	Y	Y			
4C	TB6-1,2	I7U	65	27	34	4	Y	Y			15
5A	TB3-1,2	J1U	55	17	5	5	Y	Y			
6A/S6A	TB3-5,6	J2U	40	2	6	6/SYS	Y	Y			
6B/S6B	TB3-7,8	J2L	44	6	16	6/SYS	Y	Y			
6C/S6C	TB3-9,10	J3U	64	26	36	6/SYS	Y	Y			
7A	TB5-5,6	J5U	57	19	7	7	Y	Y			
7B	TB5-7,8	J5L	57	19	7	7	Y	Y			
8A	TB5-9,10	J6U	42	4	8	8		Y		2.5	
8B	TB5-11,12	J6L	46	8	18	8	Y	Y			
8C	TB7-1,2	J7U	66	28	38	8	Y	Y			15

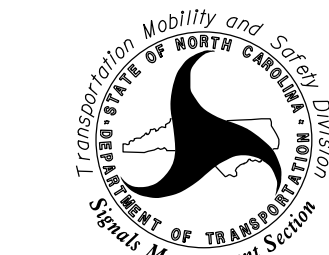
**INPUT FILE POSITION LEGEND: J2L**



**Signal Upgrade - Temporary ELECTRICAL DETAIL SHEET 1 OF 2**

**ELECTRICAL AND PROGRAMMING DETAILS FOR:**

Prepared for the Offices of:



750 N. Greenfield Pkwy, Garner, NC 27529

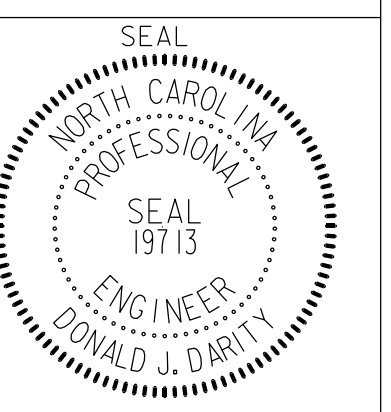
**SR 1007 (Owen Drive)  
 at  
 SR 1141 (Cumberland Road)**

Division 5 Cumberland County Fayetteville

PLAN DATE: April 2015 REVIEWED BY: J.L. Lewis

PREPARED BY: D.J. Darity VHB PROJECT NO.: 38286.03

REVISIONS INIT. DATE



SIG. INVENTORY NO. 06-0212T



\*\*\*\*\*SYTIME\*\*\*\*\*  
 \*\*\*\*\*DONSON\*\*\*\*\*  
 \*\*\*\*\*USER\*\*\*\*\*