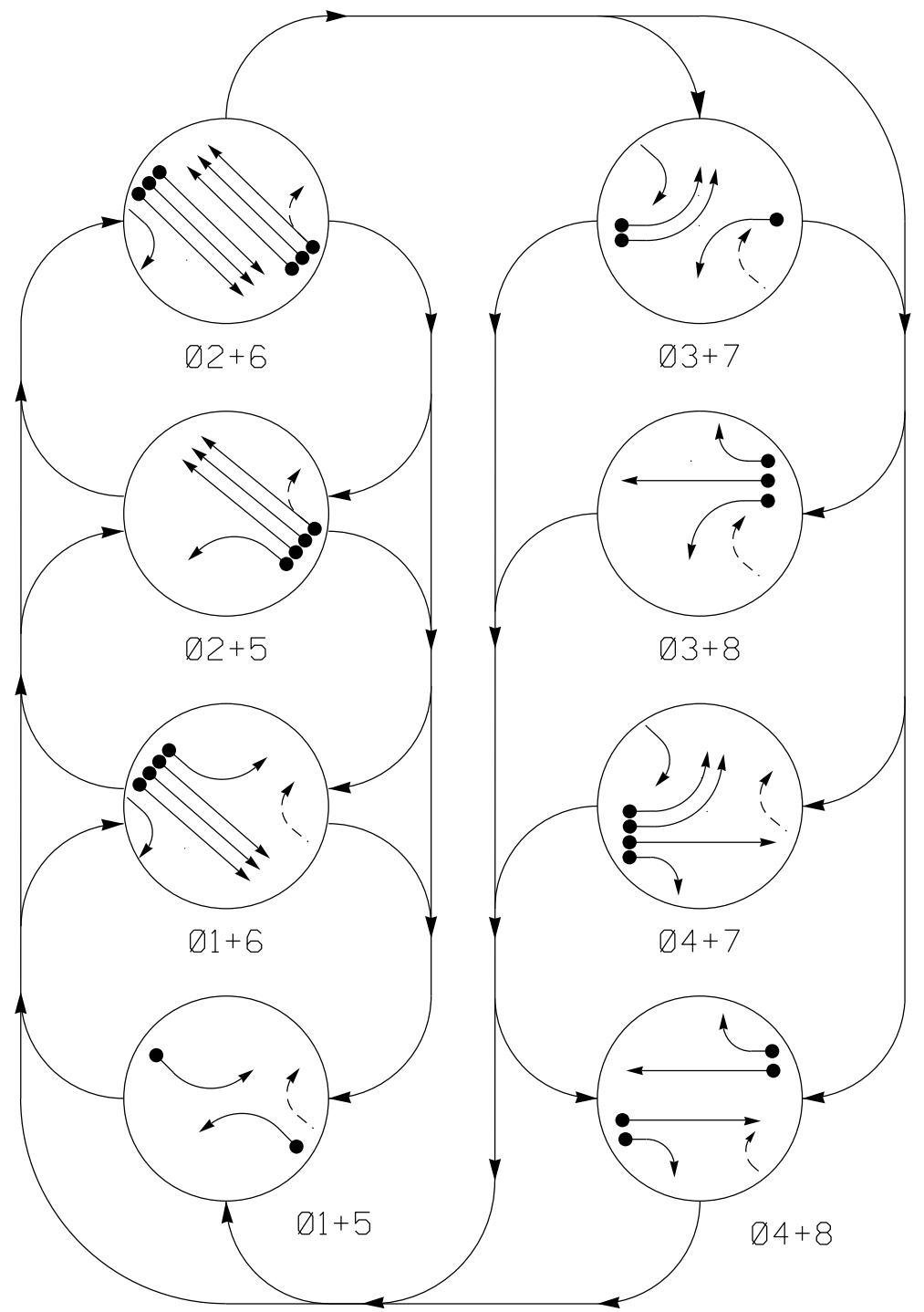


PHASING DIAGRAM



PHASING DIAGRAM DETECTION LEGEND

- ◄●► DETECTED MOVEMENT
- ◄◄◄ UNDETECTED MOVEMENT (OVERLAP)
- ◄◄◄ UNSIGNALIZED MOVEMENT
- ◄◄◄ PEDESTRIAN MOVEMENT

SIGNAL FACE I.D.

All Heads L.E.D.

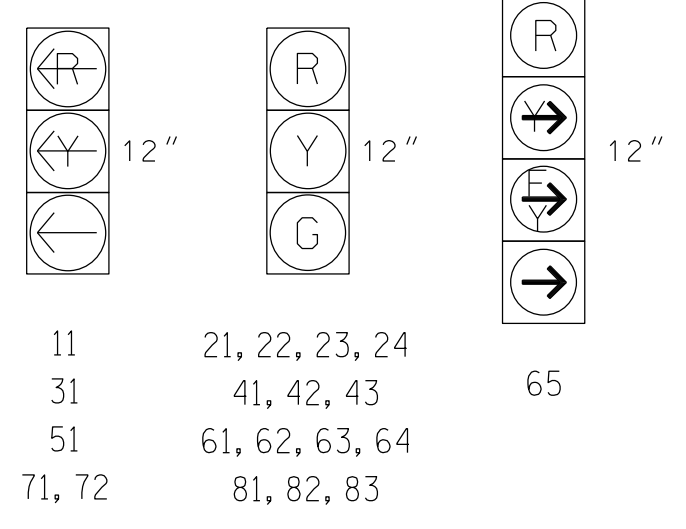


TABLE OF OPERATION

SIGNAL FACE	PHASE							
	Ø 1 + 5	Ø 1 + 6	Ø 2 + 5	Ø 2 + 6	Ø 3 + 7	Ø 3 + 8	Ø 4 + 7	Ø 4 + 8
11	←	←	←	←	←	←	←	←
21,22,23,24	←	←	←	←	←	←	←	←
31	←	←	←	←	←	←	←	←
41, 42, 43	←	←	←	←	←	←	←	←
51	←	←	←	←	←	←	←	←
61,62,63,64	←	←	←	←	←	←	←	←
65	←	←	←	←	←	←	←	←
71, 72	←	←	←	←	←	←	←	←
81,82,83	←	←	←	←	←	←	←	←

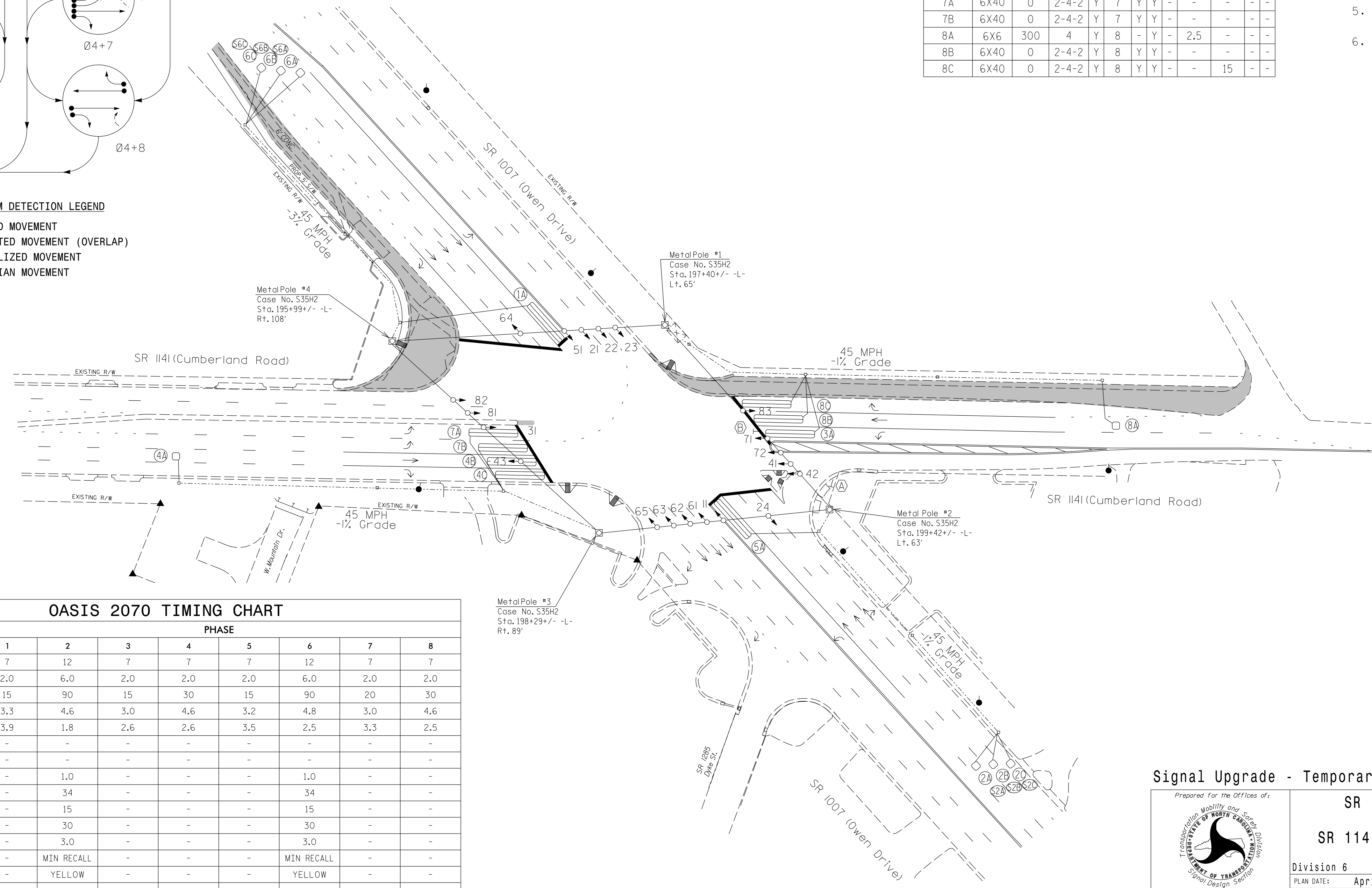
OASIS 2070 LOOP & DETECTOR INSTALLATION CHART

LOOP	SIZE (FT)	DISTANCE FROM STOPBAR (FT)	TURNS	DETECTOR PROGRAMMING								
				NEW LOOP	PHASE	CALLING	EXTENSION	FULL TIME DELAY	STRETCH TIME	DELAY TIME	SYSTEM LOOP	NEW CARD
1A	6X40	0	2-4-2	Y	1	Y	Y	-	-	-	-	-
2A/S2A	6X6	300	5	Y	2	Y	Y	-	-	-	Y	-
2B/S2B	6X6	300	5	Y	2	Y	Y	-	-	-	Y	-
2C/S2C	6X6	300	5	Y	2	Y	Y	-	-	-	Y	-
3A	6X40	0	2-4-2	Y	3	Y	Y	-	-	-	-	-
4A	6X6	300	6	Y	4	-	Y	-	2.5	-	-	-
4B	6X40	0	2-4-2	Y	4	Y	Y	-	-	-	-	-
4C	6X40	0	2-4-2	Y	4	Y	Y	-	-	15	-	-
5A	6X40	0	2-4-2	Y	5	Y	Y	-	-	-	-	-
6A/S6A	6X6	300	5	Y	6	Y	Y	-	-	-	Y	-
6B/S6B	6X6	300	5	Y	6	Y	Y	-	-	-	Y	-
6C/S6C	6X6	300	5	Y	6	Y	Y	-	-	-	Y	-
7A	6X40	0	2-4-2	Y	7	Y	Y	-	-	-	-	-
7B	6X40	0	2-4-2	Y	7	Y	Y	-	-	-	-	-
8A	6X6	300	4	Y	8	-	Y	-	2.5	-	-	-
8B	6X40	0	2-4-2	Y	8	Y	Y	-	-	-	-	-
8C	6X40	0	2-4-2	Y	8	Y	Y	-	-	15	-	-

8 Phase Fully Actuated Fayetteville Signal System

NOTES

- Refer to "Roadway Standard Drawings NCDOT" dated January 2012 and "Standard Specifications for Roads and Structures" dated January 2012.
- Do not program signal for late night flashing operation unless otherwise directed by the Engineer.
- Phase 1 and/or phase 5 may be lagged.
- Phase 3 and/or phase 7 may be lagged.
- Set all detector units to presence mode.
- Maximum times shown in timing chart are for free-run operation only. Coordinated signal system timing values supersede these values.



OASIS 2070 TIMING CHART

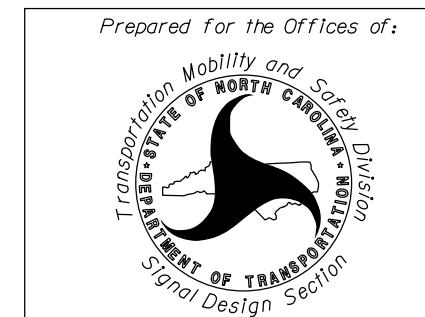
FEATURE	PHASE							
	1	2	3	4	5	6	7	8
Min Green 1 *	7	12	7	7	7	12	7	7
Extension 1 *	2.0	6.0	2.0	2.0	2.0	6.0	2.0	2.0
Max Green 1 *	15	90	15	30	15	90	20	30
Yellow Clearance	3.3	4.6	3.0	4.6	3.2	4.8	3.0	4.6
Red Clearance	3.9	1.8	2.6	2.6	3.5	2.5	3.3	2.5
Walk 1 *	-	-	-	-	-	-	-	-
Don't Walk 1	-	-	-	-	-	-	-	-
Seconds Per Actuation *	-	1.0	-	-	-	1.0	-	-
Max Variable Initial *	-	34	-	-	-	34	-	-
Time Before Reduction *	-	15	-	-	-	15	-	-
Time To Reduce *	-	30	-	-	-	30	-	-
Minimum Gap	-	3.0	-	-	-	3.0	-	-
Recall Mode	-	MIN RECALL	-	-	-	MIN RECALL	-	-
Vehicle Call Memory	-	YELLOW	-	-	-	YELLOW	-	-
Dual Entry	-	-	-	-	-	-	-	-
Simultaneous Gap	ON	ON	ON	ON	ON	ON	ON	ON

* These values may be field adjusted. Do not adjust Min Green and Extension times for phases 2 and 6 lower than what is shown. Min Green for all other phases should not be lower than 4 seconds.

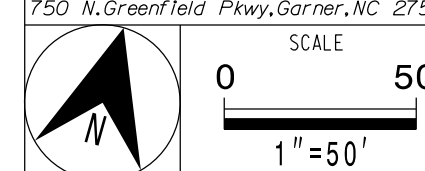
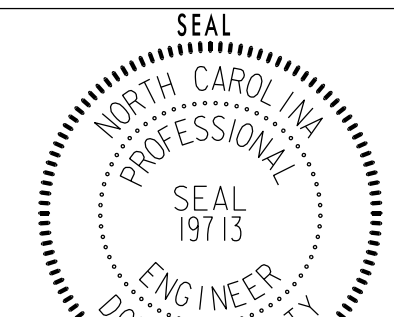
LEGEND

- | | | | |
|--|---|--|---|
| | Proposed Traffic Signal Head | | Existing Traffic Signal Head |
| | Proposed Modified Signal Head | | Existing Modified Signal Head |
| | Proposed Pedestrian Signal Head | | Existing Pedestrian Signal Head |
| | Proposed Signal Pole with Guy | | Existing Signal Pole with Guy |
| | Proposed Metal Strain Pole | | Existing Metal Strain Pole |
| | Proposed Inductive Loop Detector | | Existing Inductive Loop Detector |
| | Proposed Controller & Cabinet | | Existing Controller & Cabinet |
| | Proposed Junction Box | | Existing Junction Box |
| | Proposed Wheel Chair Ramp | | Existing Wheel Chair Ramp |
| | Proposed 2-in Underground Conduit | | Existing 2-in Underground Conduit |
| | Proposed Right of Way | | Existing Right of Way |
| | Proposed Directional Arrow | | Existing Directional Arrow |
| | Proposed "YIELD" Sign (R1-2) | | Existing "YIELD" Sign (R1-2) |
| | Proposed "U-TURN YIELD TO RIGHT TURN" Sign (R10-16) | | Existing "U-TURN YIELD TO RIGHT TURN" Sign (R10-16) |

Signal Upgrade - Temporary



Prepared for the Offices of:
SR 1007 (Owen Drive) at SR 1141 (Cumberland Road)
 Division 6 Cumberland County Fayetteville
 PLAN DATE: April 2015 REVIEWED BY: J.L. Lewis
 PREPARED BY: D.J. Darity VHB PROJECT NO.: 38286.03



REVISIONS	INIT.	DATE