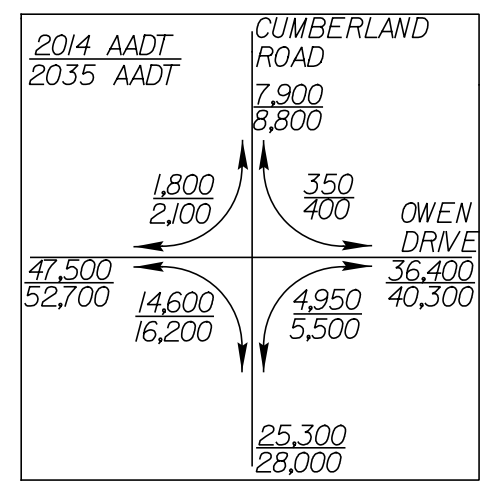
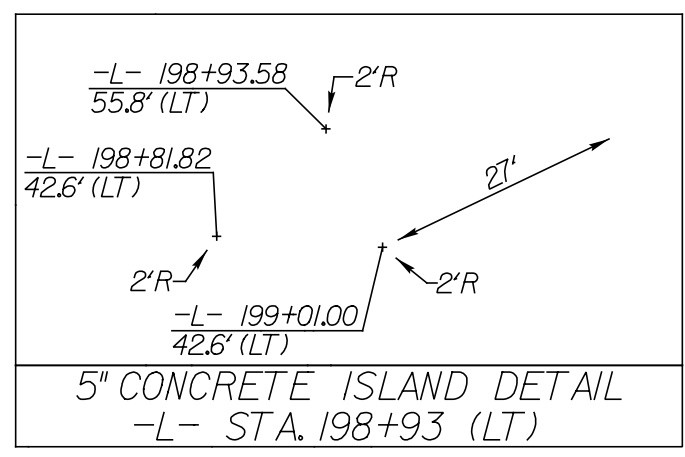
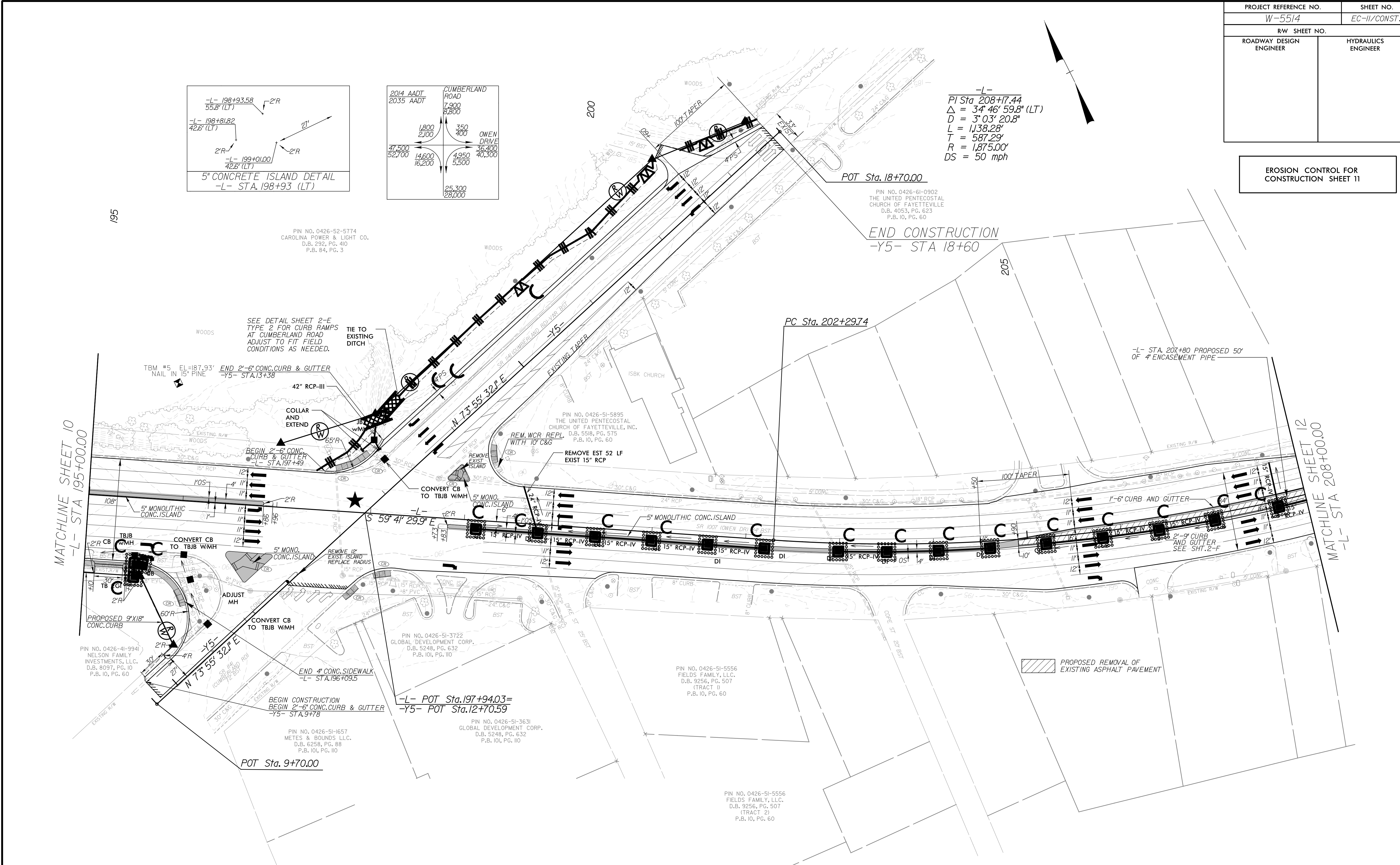


PROJECT REFERENCE NO.	SHEET NO.
W-5514	EC-II/CONST.II
RW SHEET NO.	
ROADWAY DESIGN ENGINEER	HYDRAULICS ENGINEER

EROSION CONTROL FOR CONSTRUCTION SHEET 11



-L-  
 PI Sta 208+17.44  
 $\Delta = 34' 46" 59.8" (LT)$   
 $D = 3' 03" 20.8"$   
 $L = 1,138.28'$   
 $T = 587.29'$   
 $R = 1,875.00'$   
 $DS = 50 \text{ mph}$



NOTES: ANY DEVIATION FROM OPTIONS GIVEN WILL REQUIRE PRIOR APPROVAL BY ENGINEER.

ADDITIONAL EROSION CONTROL DEVICES MAY NEED TO BE INSTALLED AS DIRECTED BY THE ENGINEER.