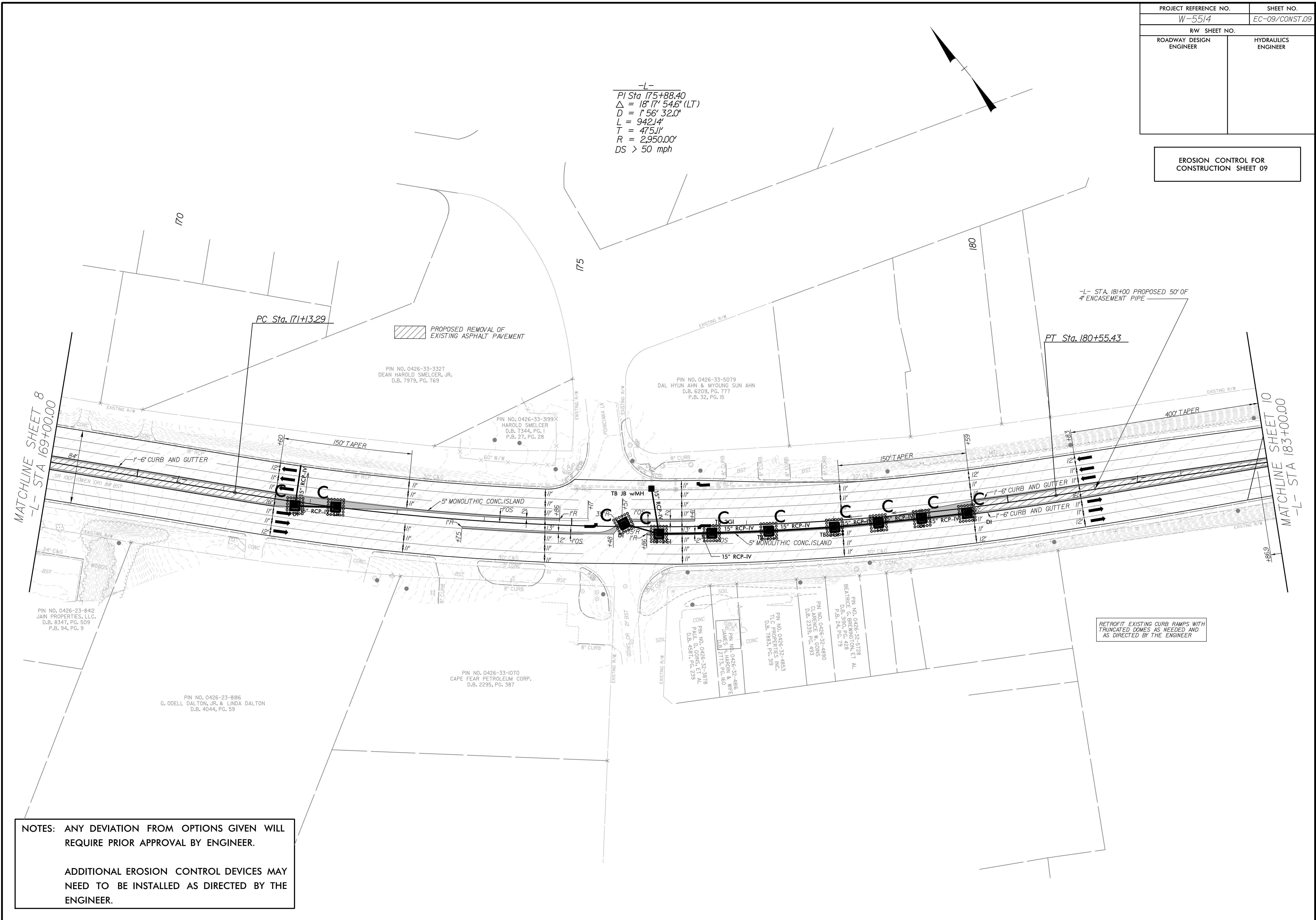


PROJECT REFERENCE NO.		SHEET NO.	
W-5514		EC-09/CONST.09	
RW SHEET NO.			
ROADWAY DESIGN ENGINEER		HYDRAULICS ENGINEER	

EROSION CONTROL FOR CONSTRUCTION SHEET 09

-L-
 PI Sta 175+88.40
 $\Delta = 18^{\circ} 17' 54.6" (LT)$
 $D = 1' 56' 32.0"$
 $L = 942.14'$
 $T = 475.11'$
 $R = 2,950.00'$
 $DS > 50 \text{ mph}$



NOTES: ANY DEVIATION FROM OPTIONS GIVEN WILL REQUIRE PRIOR APPROVAL BY ENGINEER.

ADDITIONAL EROSION CONTROL DEVICES MAY NEED TO BE INSTALLED AS DIRECTED BY THE ENGINEER.

RETROFIT EXISTING CURB RAMPS WITH TRUNCATED DOMES AS NEEDED AND AS DIRECTED BY THE ENGINEER

PROPOSED REMOVAL OF EXISTING ASPHALT PAVEMENT

PIN NO. 0426-23-8412
 JAIN PROPERTIES, LLC.
 D.B. 8347, PG. 509
 P.B. 94, PG. 9

PIN NO. 0426-23-8186
 G. ODELL DALTON, JR. & LINDA DALTON
 D.B. 4044, PG. 59

PIN NO. 0426-33-1070
 CAPE FEAR PETROLEUM CORP.
 D.B. 2295, PG. 387

PIN NO. 0426-33-3327
 DEAN HAROLD SMELCER, JR.
 D.B. 7979, PG. 769

PIN NO. 0426-33-3199
 HAROLD SMELCER
 D.B. 7344, PG. 1
 P.B. 27, PG. 28

PIN NO. 0426-33-5079
 DAL HYUN AHN & MYOUNG SUN AHN
 D.B. 6209, PG. 777
 P.B. 32, PG. 15

PIN NO. 0426-32-4853
 TLC PROPERTIES, LLC.
 D.B. 1851, PG. 319

PIN NO. 0426-32-4890
 CLARENCE W. GOINS
 D.B. 2339, PG. 493

PIN NO. 0426-32-5128
 BEATRICE G. BREWSTER
 D.B. 390, PG. 79
 P.B. 24, PG. 79

PIN NO. 0426-32-4816
 JAMES H. HARON & WIFE
 D.B. 2713, PG. 100

PIN NO. 0426-32-3818
 PAUL O. GOINS, ET AL
 D.B. 4581, PG. 239