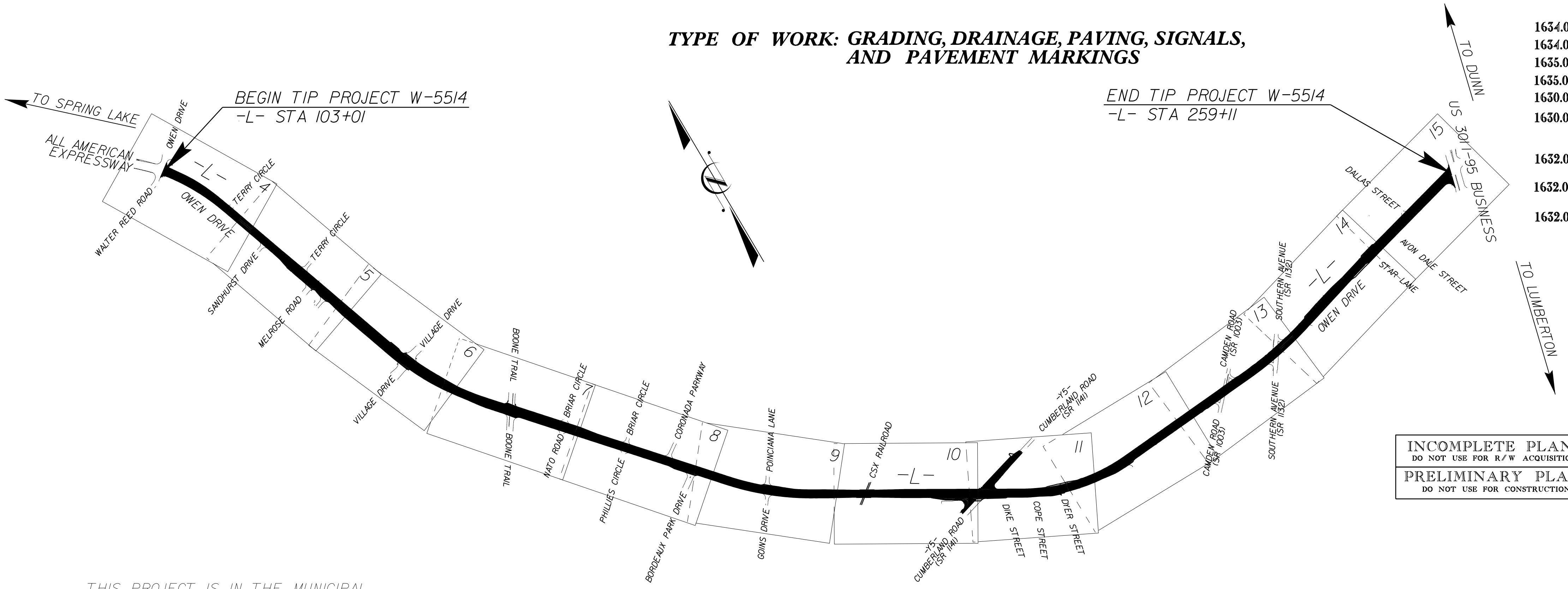
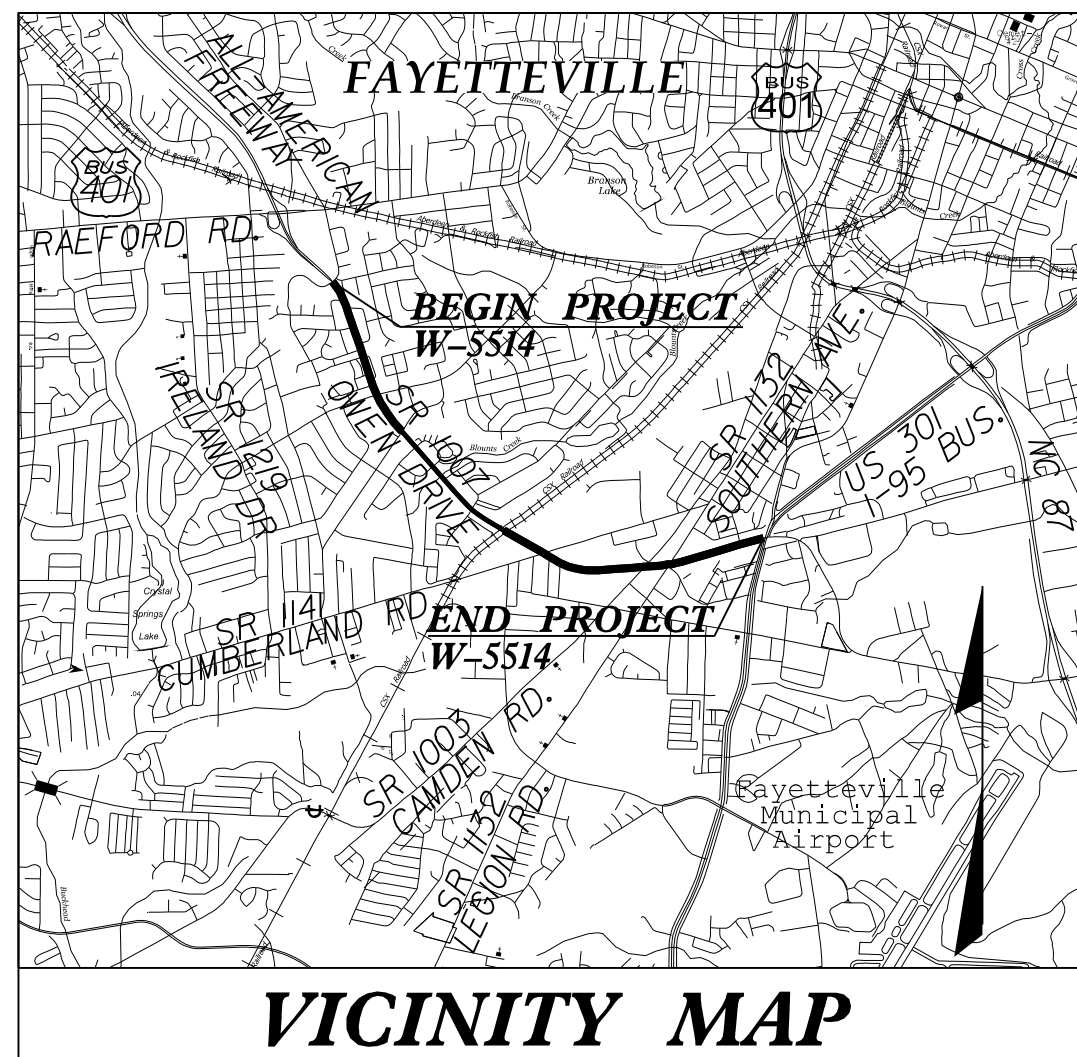


STATE	STATE PROJECT REFERENCE NO.	SHEET NO.	TOTAL SHEETS
N.C.	W-5514	EC-1	
STATE PROJ. NO.	F.A. PROJ. NO.	DESCRIPTION	
44102.1.FS1	HSIP-1007(27)	PE	
		R/W, UTILITIES	
		CONSTRUCTION	

STATE OF NORTH CAROLINA
 DIVISION OF HIGHWAYS
 PLAN FOR PROPOSED
 HIGHWAY EROSION CONTROL
CUMBERLAND COUNTY

LOCATION: SR 1007 (OWEN DRIVE) FROM WALTER REED ROAD
 TO US 301 / I-95 BUSINESS

TYPE OF WORK: GRADING, DRAINAGE, PAVING, SIGNALS,
 AND PAVEMENT MARKINGS



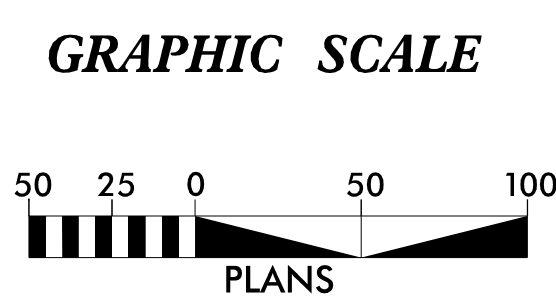
INCOMPLETE PLANS
 DO NOT USE FOR R/W ACQUISITION
 PRELIMINARY PLANS
 DO NOT USE FOR CONSTRUCTION

EROSION AND SEDIMENT CONTROL MEASURES

Std. #	Description	Symbol
1630.03	Temporary Silt Ditch	TD
1630.05	Temporary Diversion	TD
1605.01	Temporary Silt Fence	III III III
1606.01	Special Sediment Control Fence	△△△△△
1622.01	Temporary Berms and Slope Drains	—
1630.02	Silt Basin Type B	▨
1633.01	Temporary Rock Silt Check Type-A	⊗
	Temporary Rock Silt Check Type-A with Matting and Polyacrylamide (PAM)	⊗
1633.02	Temporary Rock Silt Check Type-B	▶
	Wattle / Coir Fiber Wattle	—
	Wattle / Coir Fiber Wattle with Polyacrylamide (PAM)	—
1634.01	Temporary Rock Sediment Dam Type-A	▬
1634.02	Temporary Rock Sediment Dam Type-B	▬
1635.01	Rock Pipe Inlet Sediment Trap Type-A	⊓
1635.02	Rock Pipe Inlet Sediment Trap Type-B	⊓
1630.04	Stilling Basin	▭
1630.06	Special Stilling Basin	▭
	Rock Inlet Sediment Trap:	
1632.01	Type A	A
1632.02	Type B	B
1632.03	Type C	C
	Skimmer Basin	▭
	Tiered Skimmer Basin	▭
	Infiltration Basin	▭

THIS PROJECT IS IN THE MUNICIPAL BOUNDARIES OF FAYETTEVILLE
 CLEARING ON THIS PROJECT WILL BE PERFORMED TO THE LIMITS ESTABLISHED BY METHOD II

CONTRACT: WBS 44102.1.FS1 TIP PROJECT: W-5514



THESE EROSION AND SEDIMENT CONTROL PLANS COMPLY WITH THE REGULATIONS SET FORTH BY THE NCG-010000 GENERAL CONSTRUCTION PERMIT EFFECTIVE AUGUST 3, 2011 AND ISSUED BY THE NORTH CAROLINA DEPARTMENT OF ENVIRONMENT AND NATURAL RESOURCES DIVISION OF WATER RESOURCES.

Prepared in the Office of:
SUNGATE DESIGN GROUP, P.A.
 915 JONES FRANKLIN ROAD
 RALEIGH, NORTH CAROLINA 27606
 NC COA No. C-0890
 2012 STANDARD SPECIFICATIONS
 Designed by:
Eric M. Leonhart, EI 3502
 NAME LEVEL III CERTIFICATION NO.

Reviewed in the Office of:
ROADSIDE ENVIRONMENTAL UNIT
 419 Transportation Drive
 Fayetteville, NC 28301
 2012 STANDARD SPECIFICATIONS
 Reviewed by:
Jerry Yarborough, CPESC

Roadway Standard Drawings

The following roadway english standards as appear in "Roadway Standard Drawings"- Roadway Design Unit - N. C. Department of Transportation - Raleigh, N. C., dated January 2012 and the latest revision thereto are applicable to this project and by reference hereby are considered a part of these plans.

1604.01 Railroad Erosion Control Detail	1632.01 Rock Inlet Sediment Trap Type A
1605.01 Temporary Silt Fence	1632.02 Rock Inlet Sediment Trap Type B
1606.01 Special Sediment Control Fence	1632.03 Rock Inlet Sediment Trap Type C
1607.01 Gravel Construction Entrance	1633.01 Temporary Rock Silt Check Type A
1622.01 Temporary Berms and Slope Drains	1633.02 Temporary Rock Silt Check Type B
1630.01 Riser Basin	1634.01 Temporary Rock Sediment Dam Type A
1630.02 Silt Basin Type B	1634.02 Temporary Rock Sediment Dam Type B
1630.03 Temporary Silt Ditch	1635.01 Rock Pipe Inlet Sediment Trap Type A
1630.04 Stilling Basin	1635.02 Rock Pipe Inlet Sediment Trap Type B
1630.05 Temporary Diversion	1640.01 Coir Fiber Baffle
1630.06 Special Stilling Basin	1645.01 Temporary Stream Crossing
1631.01 Matting Installation	

3/12/2015 4_EC.dgn-ehudgn
 eleonhart