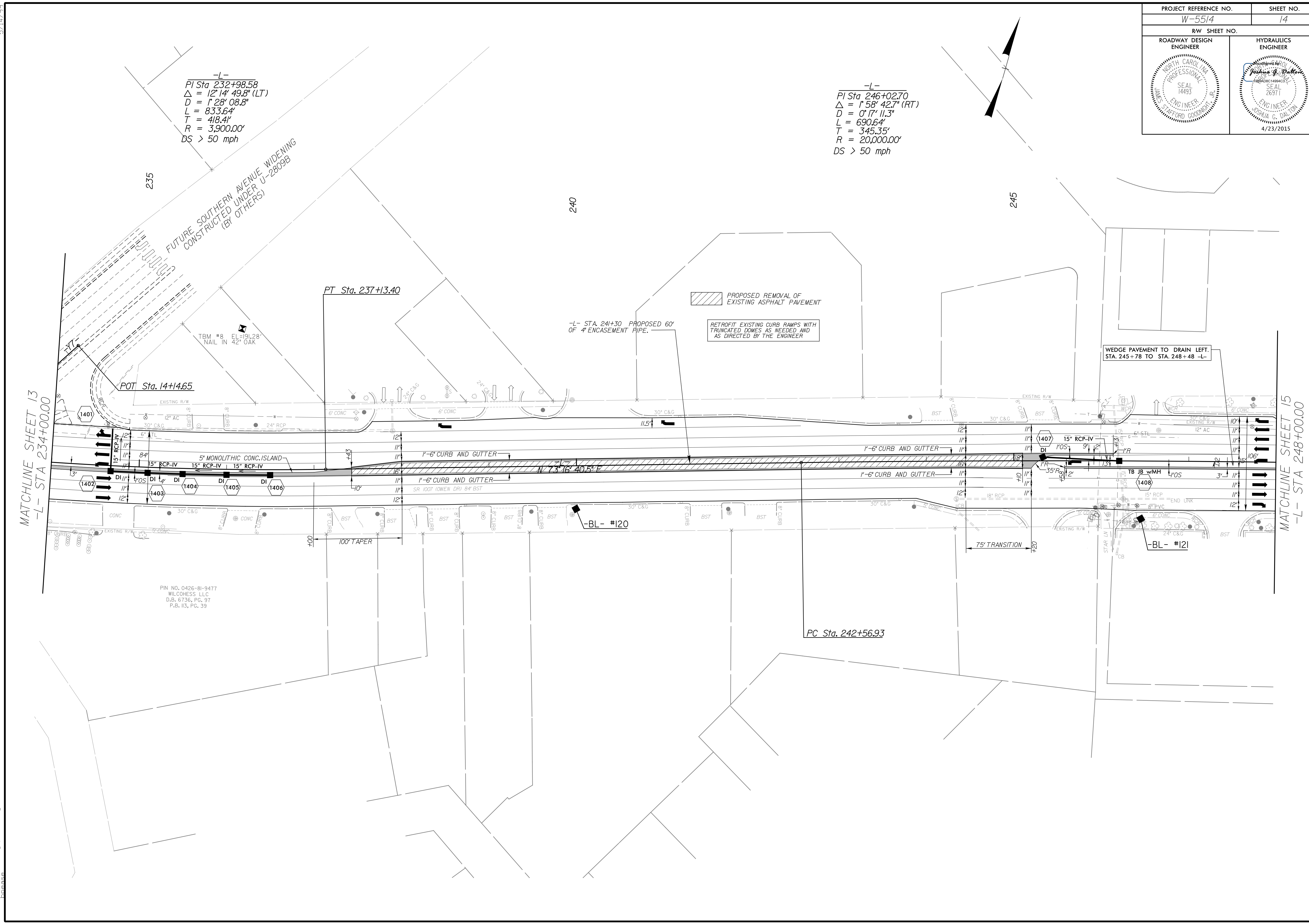


| | |
|---------------------------------|---------------------|
| PROJECT REFERENCE NO. W-5514 | SHEET NO. 14 |
| RW SHEET NO. | |
| ROADWAY DESIGN ENGINEER | HYDRAULICS ENGINEER |
| | |
| | 4/23/2015 |

-L-
 PI Sta 232+98.58
 $\Delta = 12' 14" 49.8" (LT)$
 $D = 1' 28" 08.8"$
 $L = 833.64'$
 $T = 418.41'$
 $R = 3,900.00'$
 $DS > 50 \text{ mph}$

-L-
 PI Sta 246+02.70
 $\Delta = 1' 58" 42.7" (RT)$
 $D = 0' 17" 11.3"$
 $L = 690.64'$
 $T = 345.35'$
 $R = 20,000.00'$
 $DS > 50 \text{ mph}$



MATCHLINE SHEET 13
 -L- STA 234+00.00

MATCHLINE SHEET 15
 -L- STA 248+00.00

PIN NO. 0426-81-9477
 WILCOHESS LLC
 D.B. 6736, PG. 97
 P.B. 113, PG. 39

PC Sta. 242+56.93

5/14/99
 4/23/2015
 14_rdy_psh_14.dgn