

# W-5514 SURVEY CONTROL SHEET

**CONTRACT: WBS 44102.1.FS1 TIP PROJECT: W-5514**

- ◆ INDICATES REBAR AND CAP USED OR SET FOR HORIZONTAL PROJECT CONTROL BY CH ENGINEERING.
  - ⊠ INDICATES BENCHMARK USED OR SET FOR VERTICAL PROJECT CONTROL BY CH ENGINEERING.
- PROJECT CONTROL WAS ESTABLISHED USING NCGS VIRTUAL REFERENCE STATION (VRS) NETWORK

DRAWING NOT TO SCALE

**DATUM DESCRIPTION**

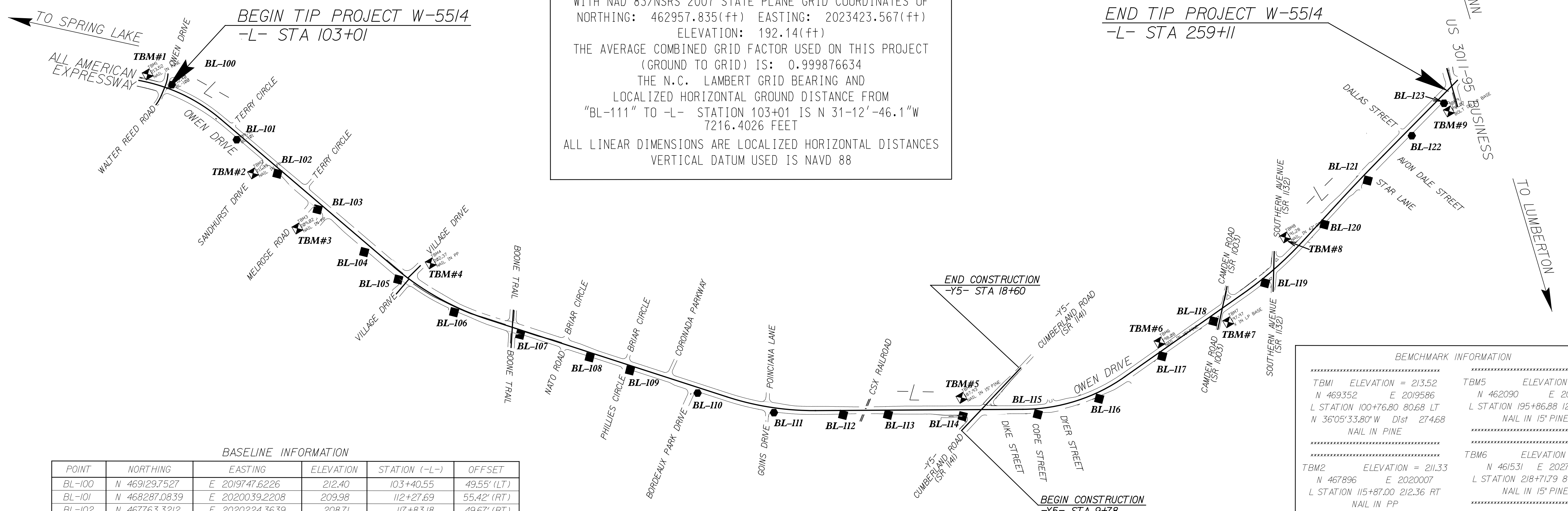
THE LOCALIZED COORDINATE SYSTEM DEVELOPED FOR THIS PROJECT IS BASED ON THE STATE PLANE COORDINATES ESTABLISHED BY OTHERS FOR MONUMENT "BL-111"

WITH NAD 83/NSRS 2007 STATE PLANE GRID COORDINATES OF  
 NORTHING: 462957.835(±) EASTING: 2023423.567(±)  
 ELEVATION: 192.14(±)

THE AVERAGE COMBINED GRID FACTOR USED ON THIS PROJECT (GROUND TO GRID) IS: 0.999876634

THE N.C. LAMBERT GRID BEARING AND LOCALIZED HORIZONTAL GROUND DISTANCE FROM "BL-111" TO -L- STATION 103+01 IS N 31-12'-46.1"W 7216.4026 FEET

ALL LINEAR DIMENSIONS ARE LOCALIZED HORIZONTAL DISTANCES  
 VERTICAL DATUM USED IS NAVD 88



BASELINE INFORMATION

POINT	NORTHING	EASTING	ELEVATION	STATION (-L-)	OFFSET
BL-100	N 469129.7527	E 2019747.6226	212.40	103+40.55	49.55' (LT)
BL-101	N 468287.0839	E 2020039.2208	209.98	112+27.69	55.42' (RT)
BL-102	N 467763.3212	E 2020224.3639	208.71	117+83.18	49.67' (RT)
BL-103	N 467226.3056	E 2020395.3697	208.90	123+46.64	61.58' (RT)
BL-104	N 466593.2009	E 2020587.9576	205.03	130+08.00	84.16' (RT)
BL-105	N 466164.1289	E 2020748.0196	202.03	134+62.92	73.75' (RT)
BL-106	N 465571.2330	E 2021076.6805	195.17	141+26.70	59.38' (RT)
BL-107	N 465016.0231	E 2021552.2883	191.56	148+51.37	48.47' (RT)
BL-108	N 464440.4279	E 2022058.2944	165.96	156+17.76	49.46' (RT)
BL-109	N 464107.4653	E 2022351.2915	153.63	160+61.28	49.82' (RT)
BL-110	N 463541.9533	E 2022840.1113	165.62	168+08.74	57.04' (RT)
BL-111	N 462957.8352	E 2023423.5673	192.14	176+26.51	50.87' (RT)
BL-112	N 462568.4006	E 2024035.2506	207.65	183+45.26	46.73' (RT)
BL-113	N 462329.7074	E 2024440.3540	206.93	188+15.45	48.36' (RT)
BL-114	N 461917.2998	E 2025105.3527	191.02	195+97.68	68.81' (RT)
BL-115	N 461533.7572	E 2025792.3830	194.77	203+79.78	59.41' (RT)
BL-116	N 461346.4205	E 2026429.3341	195.19	210+25.44	65.65' (RT)
BL-117	N 461392.6635	E 2027223.8910	193.89	218+11.16	49.24' (RT)
BL-118	N 461434.5808	E 2027873.3259	193.15	224+61.88	58.12' (RT)
BL-119	N 461502.4645	E 2028542.6448	193.73	231+31.35	50.88' (RT)
BL-120	N 461713.0214	E 2029390.6574	192.67	239+98.68	49.31' (RT)
BL-121	N 461879.0711	E 2030014.7420	191.68	246+45.46	66.09' (RT)
BL-122	N 462046.9375	E 2030651.7944	193.70	253+05.27	68.15' (RT)
BL-123	N 462167.7939	E 2031115.5889	196.91	257+84.79	69.31' (RT)

BENCHMARK INFORMATION

TBM1 ELEVATION = 213.52 N 469352 E 2019586 L STATION 100+76.80 80.68 LT N 36°05'33.80"W Dist 274.68 NAIL IN 15' PINE	TBM5 ELEVATION = 187.93 N 462090 E 2025194 L STATION 195+86.88 124.63 LT NAIL IN 15' PINE
TBM2 ELEVATION = 211.33 N 467896 E 2020007 L STATION 115+87.00 212.36 RT NAIL IN PP	TBM6 ELEVATION = 198.08 N 461531 E 2027274 L STATION 218+71.79 84.80 LT NAIL IN 15' PINE
TBM3 ELEVATION = 209.02 N 467163 E 2020112 L STATION 123+14.86 350.23 RT NAIL IN PP	TBM7 ELEVATION = 197.97 N 461347 E 2028001 L STATION 225+82.56 155.36 RT X IN LP BASE
TBM4 ELEVATION = 202.37 N 466137 E 2021128 L STATION 136+42.30 265.57 LT NAIL IN PP	TBM8 ELEVATION = 191.28 N 461807 E 2028968 L STATION 236+16.42 161.0 LT NAIL IN 42' OAK
	TBM9 ELEVATION = 199.07 N 462069 E 2031115 L STATION 257+58.96 165.1 RT BOLT ON LP BASE

**CH ENGINEERING**

3220 GLEN ROYAL RD. RALEIGH, NC 27617  
 TEL. (919) 788-0224 FAX (919) 788-0232  
 CORPORATE LICENSE # P-0189