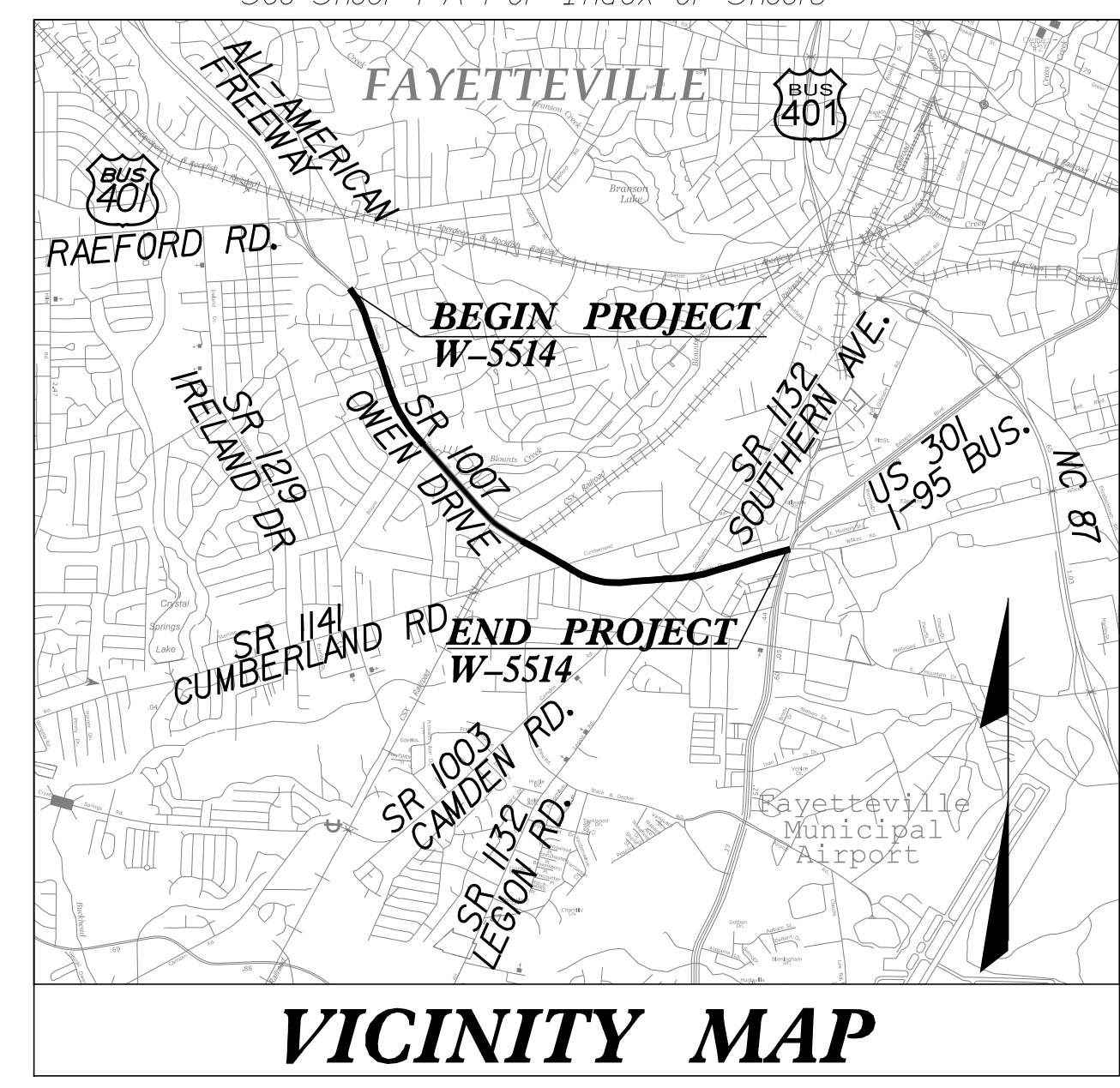


09.08/2015

TIP PROJECT: W-5514

CONTRACT: C203651

See Sheet 1-A For Index of Sheets



VICINITY MAP

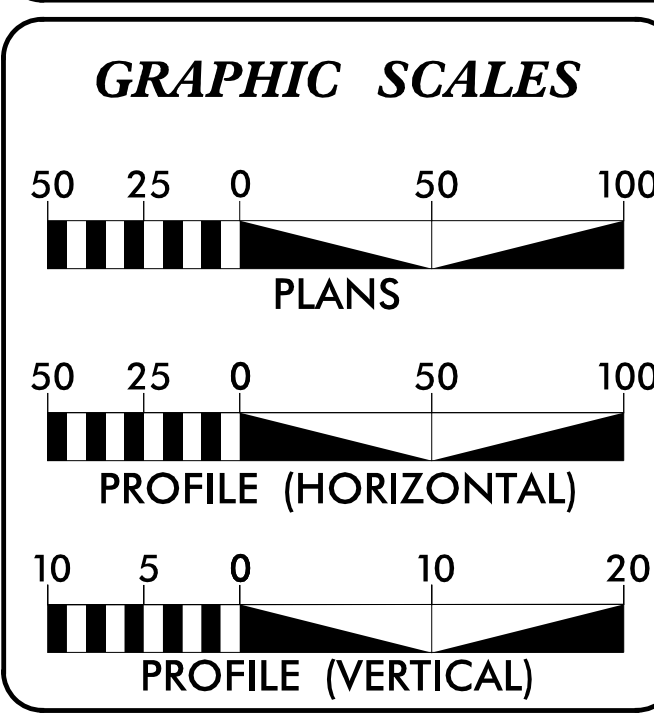
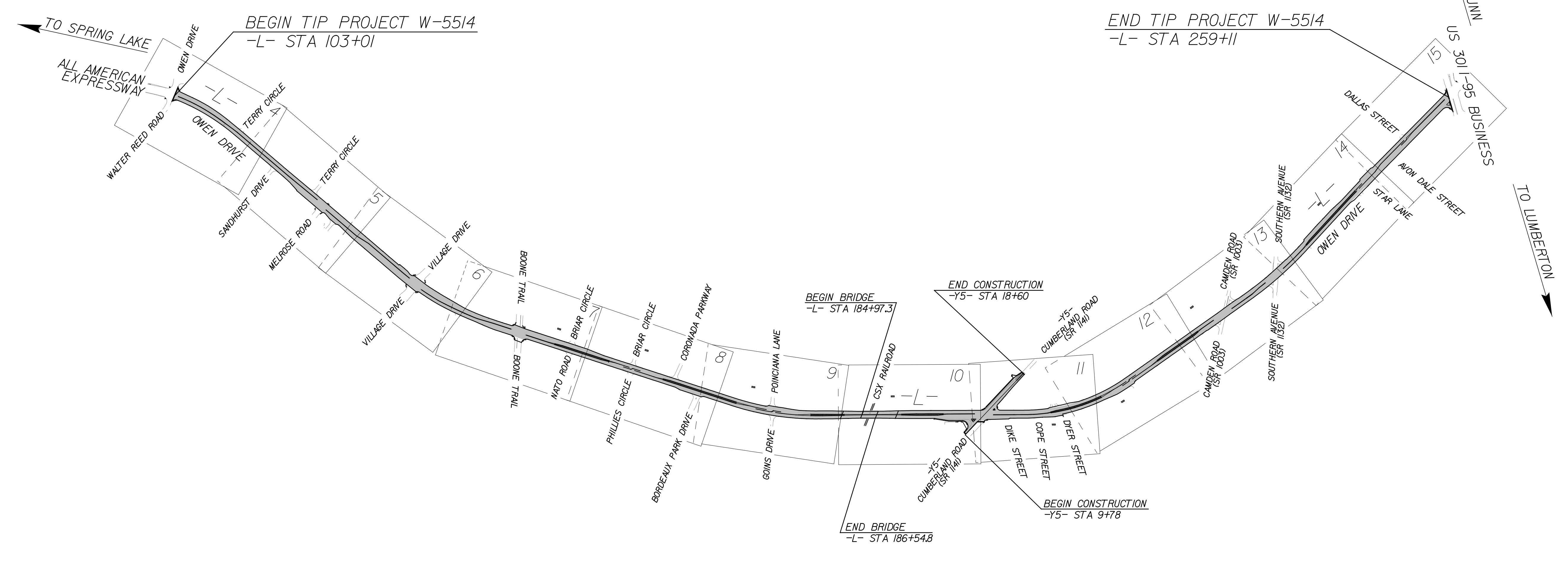
STATE OF NORTH CAROLINA
DIVISION OF HIGHWAYS

CUMBERLAND COUNTY

LOCATION: SR 1007 (OWEN DRIVE) FROM WALTER REED ROAD
TO US 301 / I-95 BUSINESS

TYPE OF WORK: GRADING, DRAINAGE, PAVING, SIGNALS,
AND BRIDGE PRESERVATION

STATE	STATE PROJECT REFERENCE NO.	SHEET NO.	TOTAL SHEETS
N.C.	W-5514	1	
STATE PROJ. NO.	F.A. PROJ. NO.	DESCRIPTION	
44102.1.FS1	HSIP-1007(27)	PE	
44102.2.FS1	HSIP-1007(27)	RW, UTILITIES	
44102.3.FS1	HSIP-1007(27)	CONSTRUCTION	



DESIGN DATA

ADT (2013) = 55,000
ADT (2035) = 62,000
T = 5%*
V = 50 MPH
*DUAL = 3% *TTST = 2%
FUNC CLASS = PRINCIPAL ARTERIAL

PROJECT LENGTH

LENGTH ROADWAY TIP PROJECT W-5514	= 2.926 MILES
LENGTH STRUCTURE TIP PROJECT W-5514	= 0.030 MILES
TOTAL LENGTH TIP PROJECT W-5514	= 2.956 MILES

vhb
4000 WestChase Boulevard, Suite 530 Raleigh, NC 27607
NC License No. C-3705

SUNGATE DESIGN GROUP, P.A.
615 JONES FARM ROAD
RALEIGH, NORTH CAROLINA 27605
TEL: (919) 486-2200 FAX: (919) 486-4258
EMP. PERM. LICENSE NO. C0007

2012 STANDARD SPECIFICATIONS

JIMMY GOODNIGHT, PE
PROJECT ENGINEER

LAURA FISHER, PE
PROJECT DESIGN ENGINEER

SEAN MATUSZEWSKI
DIVISION DESIGN ENGINEER
NCDOT CONTACT

RIGHT OF WAY DATE:
JULY 18, 2014

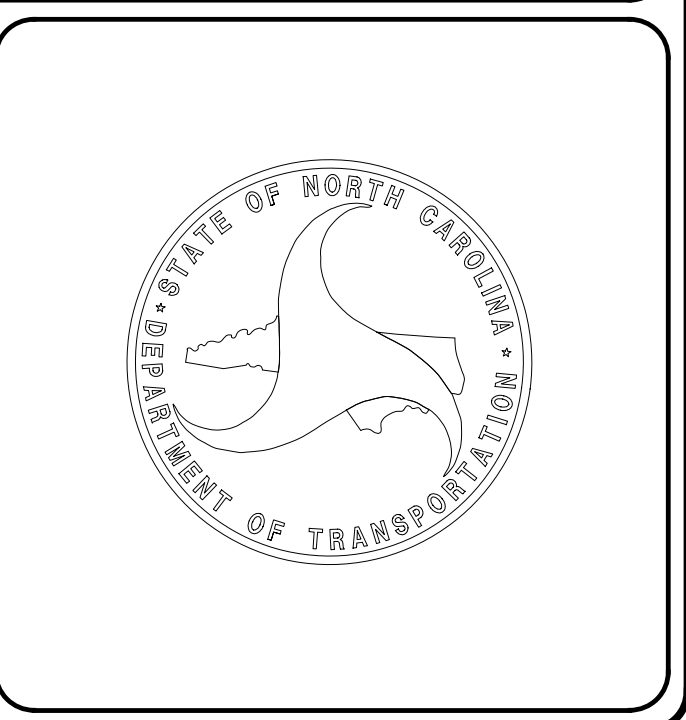
LETTING DATE:
JULY 21, 2015

HYDRAULICS ENGINEER
JOSHUA DALTON, PE
SUNGATE DESIGN GROUP, PA

DocuSigned by:
Joshua G. Dalton 5/1/2015
1089AD8C14994C3...

ROADWAY DESIGN ENGINEER
JIMMY GOODNIGHT, PE
VHB ENGINEERING NC, P.C.

SIGNATURE:



5/1/2015 W5514_Fdy_tsh_01.dgn