

PAVEMENT SCHEDULE

C	2" ASPHALT CONCRETE SURFACE COURSE, TYPE S9.5C, AT AN AVERAGE RATE OF 224 LBS. PER SQ. YD.
S	PROP. SHOULDER GRADING
U	EXISTING PAVEMENT
V	2" MILLING NEW ASPHALT TO BE PAVED BACK FLUSH

MINIMUM TIE IN
ON CITY STREETS AND
COMMERCIAL DRIVES

AS DIRECTED BY THE ENGINEER

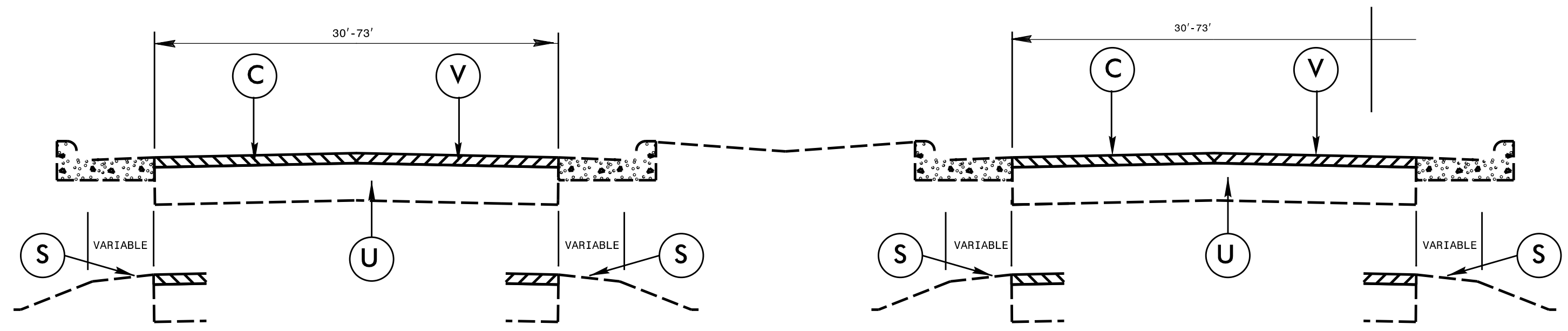
EXTEND LIMITS TO
BACK OF SIGNAL LOOPS ON
STATE MAINTAINED ROADS
AS DIRECTED BY THE ENGINEER

MINIMUM TIE IN
ON CITY STREETS AND
COMMERCIAL DRIVES
AS DIRECTED BY THE ENGINEER

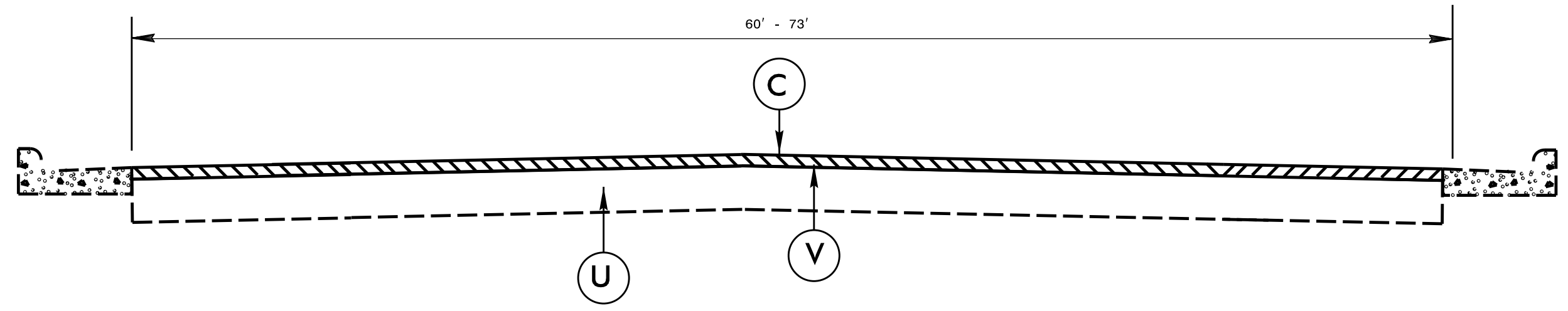
EXTEND LIMITS TO
BACK OF RADIUS ON
STATE MAINTAINED ROADS
AS DIRECTED BY THE ENGINEER

DETAIL OF PROJECT LIMITS AT
SIGNALIZED Y LINES

DETAIL OF PROJECT LIMITS AT
UNSIGNALIZED Y LINES



TYPICAL SECTION NO. 2



TYPICAL SECTION NO. 3