



GEOTECHNICAL ENGINEER

SEAL 030943

THEIN TUN ZAN

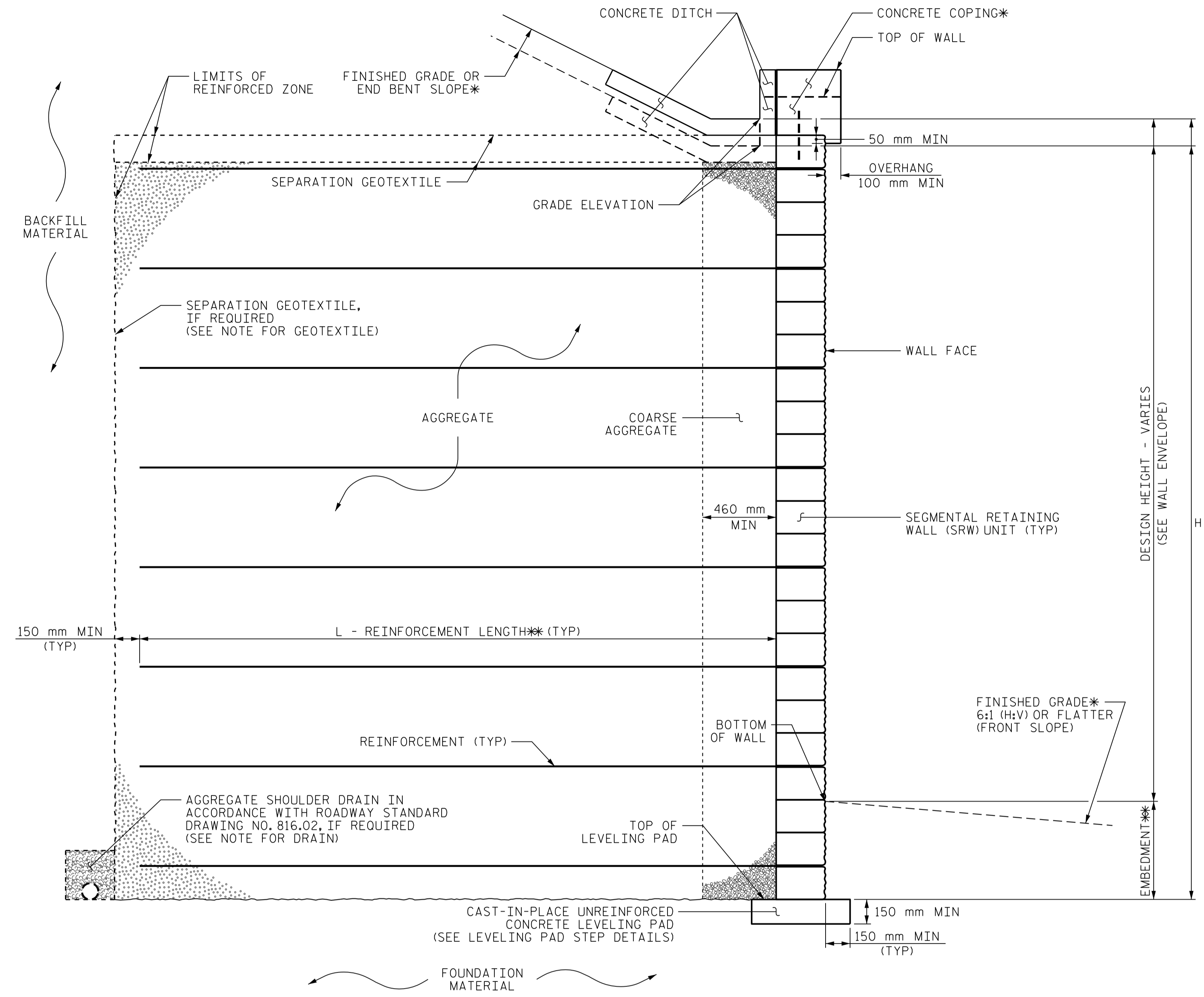
DocuSigned by: Thein Tun Zan 2/18/2015

443668C9C19472

ENGINEER

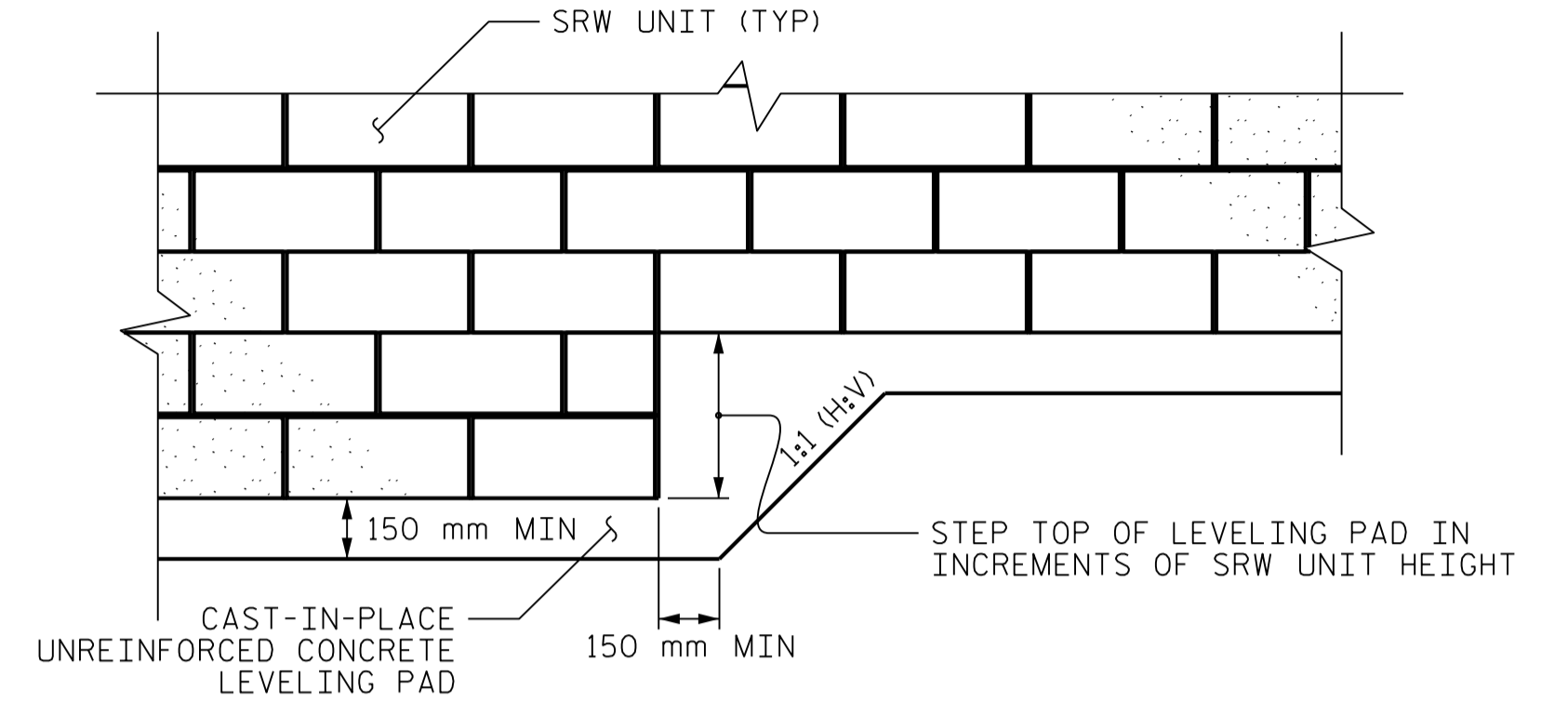
SIGNATURE

DATE

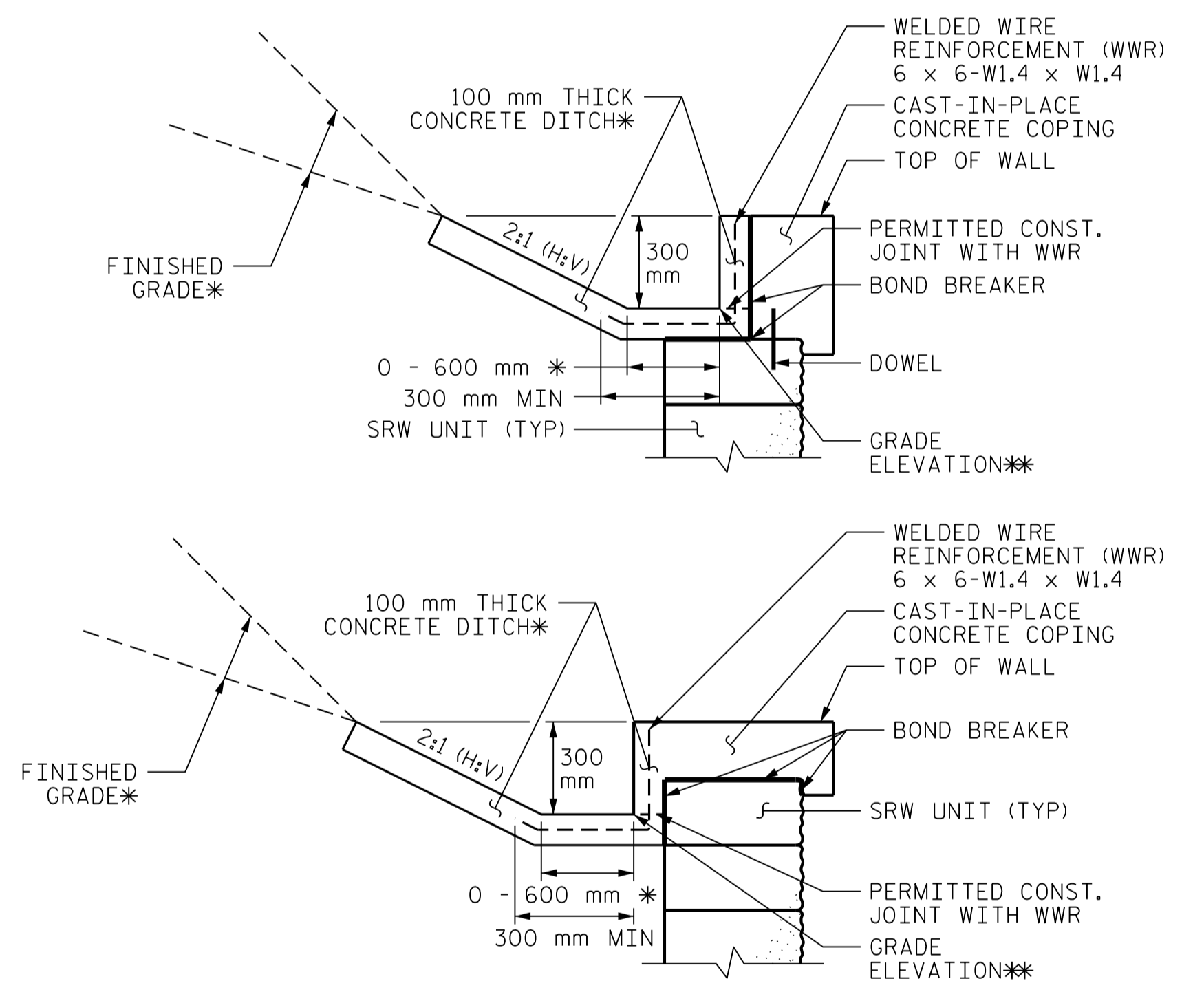


**MSE WALL WITH SRW UNITS - TYPICAL SECTION**

\*SEE COPING DETAILS AND PLANS FOR FINISHED GRADE OR END BENT SLOPE DETAILS.  
 \*SEE MSE RETAINING WALLS PROVISION AND IF APPLICABLE, MSE WALL NOTES FOR EMBEDMENT AND REINFORCEMENT LENGTH REQUIREMENTS.

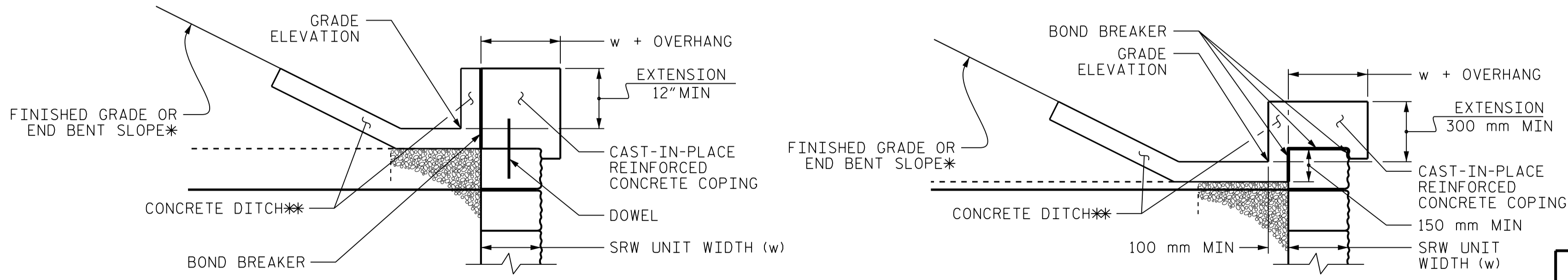


**LEVELING PAD STEP DETAILS**



**CONCRETE DITCH BEHIND WALL WITH CONCRETE COPING**

\*SEE ROADWAY PLANS FOR FINISHED GRADE AND DITCH DETAILS.  
 \*SEE WALL ENVELOPE FOR GRADE ELEVATIONS.  
 FOR CONCRETE DITCHES, SEE SECTION 850 OF THE STANDARD SPECIFICATIONS.



**COPING DETAILS**

AT THE CONTRACTOR'S OPTION, CONNECT COPING TO SRW UNITS WITH DOWELS OR EXTEND COPING DOWN BACK OF SRW UNITS.  
 \*SEE PLANS FOR FINISHED GRADE OR END BENT SLOPE DETAILS.  
 \*SEE CONCRETE DITCH BEHIND WALL DETAILS.

PROJECT NO.: R-2413CA  
 ROCKINGHAM COUNTY  
 STATION: 13+51 -NC68\_SB-LT  
 SHEET 7 OF 8

NORTH CAROLINA DEPARTMENT OF TRANSPORTATION DIVISION OF HIGHWAYS

GEOTECHNICAL ENGINEERING UNIT

**MSE RETAINING WALL NO. 3 TYPICAL SECTION & DETAILS FOR MSE WALL WITH SRW UNITS**

REVISIONS						SHEET NO.
NO.	BY	DATE	NO.	BY	DATE	
1			3			W-7
2			4			

PREPARED BY: THEIN T. ZAN DATE: 02/2015  
 REVIEWED BY: JAMES R. BATTS DATE: 02/2015