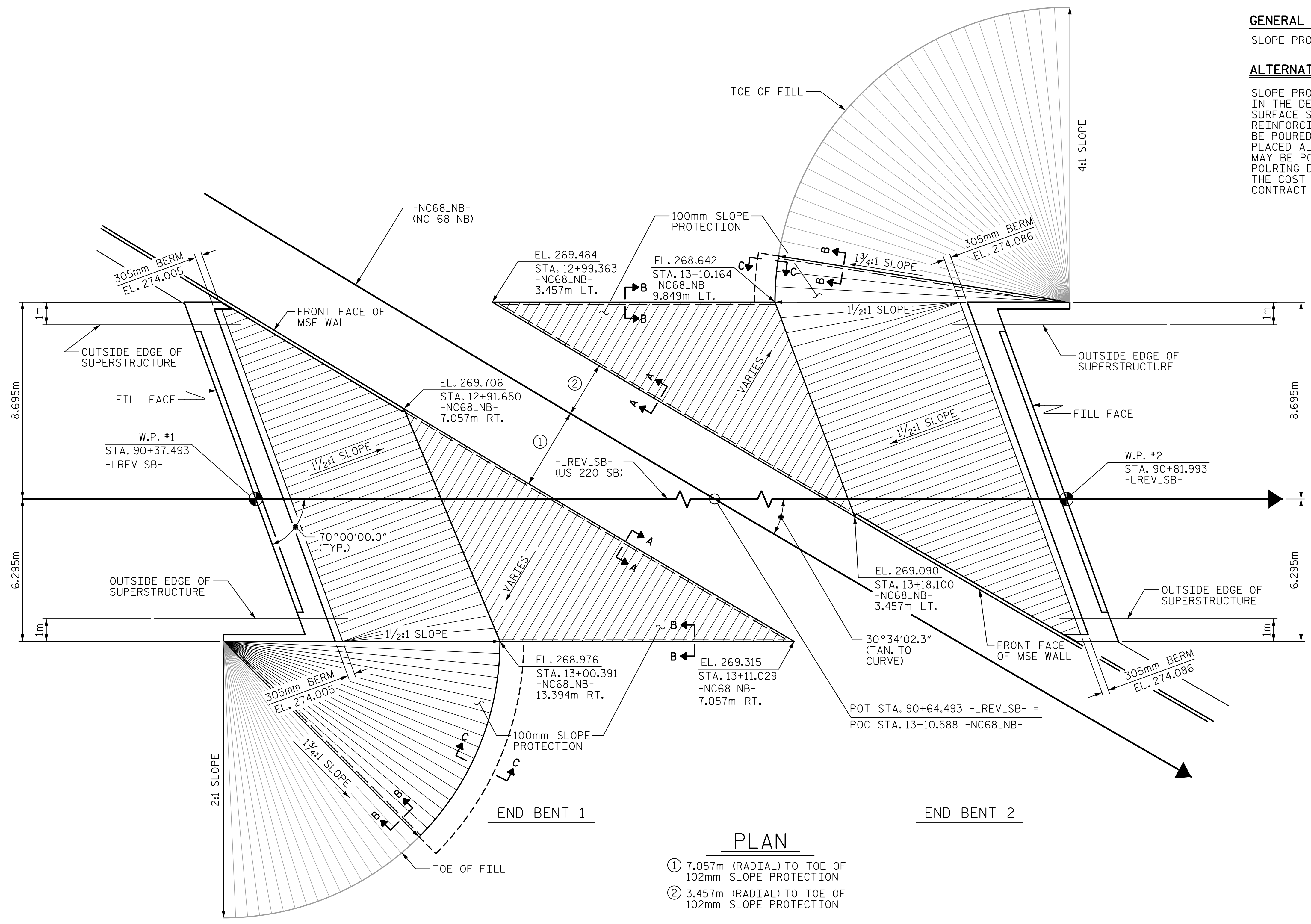


GENERAL NOTES

SLOPE PROTECTION SHALL BE PLACED UNDER THE ENDS OF THE BRIDGE AS SHOWN IN THE DETAILS.

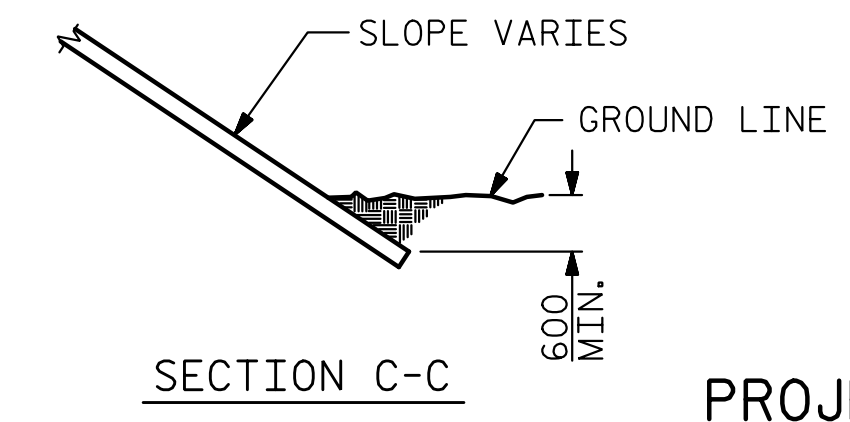
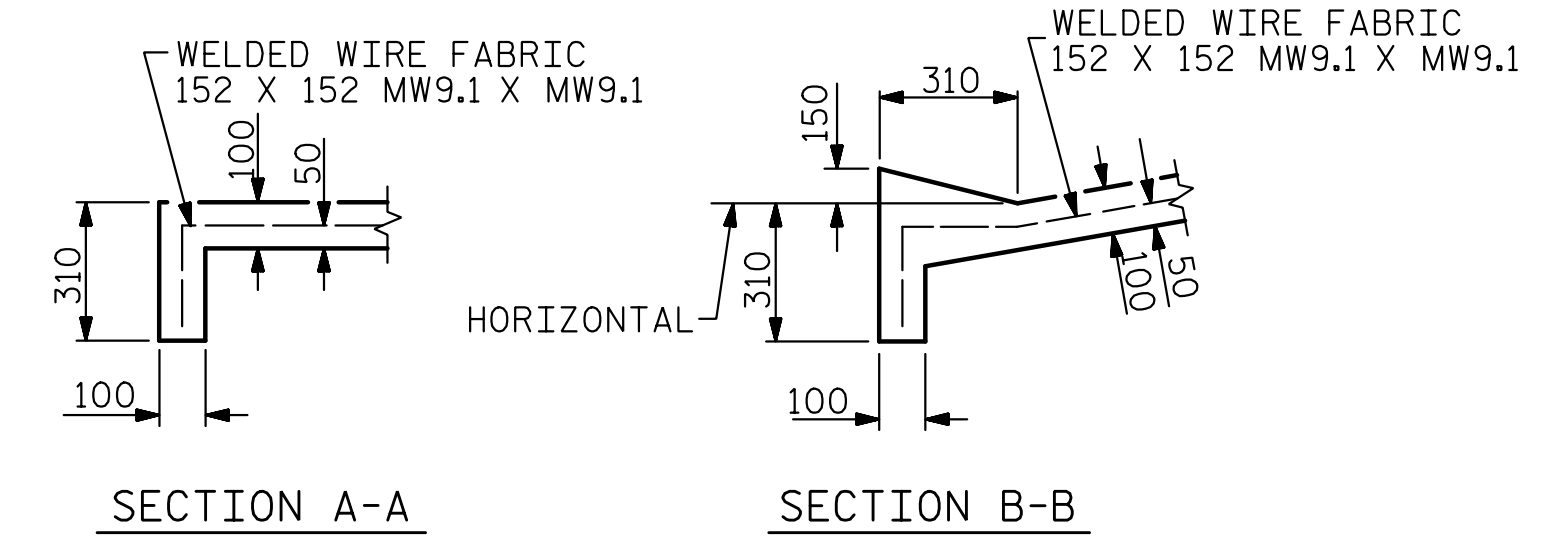
ALTERNATE "A"

SLOPE PROTECTION SHALL CONSIST OF 100mm Poured-in-place concrete paving as shown in the details on this sheet. Concrete shall be class "B". The concrete surface shall be floated with a wooden float and finished. Welded wire fabric reinforcing shall be 152 x 152 - W9.1 x W9.1, 1520mm wide. Slope protection shall be poured in 1520mm strips as shown in the "Pouring Detail" with 600mm long #13 bars placed along the slope between strips at 450mm maximum spacing. Slope protection may be poured in alternate 1220mm and 1520mm strips as shown in the "Optional Pouring Detail" with adjacent runs of welded wire fabric lapping at least 152mm. The cost of the welded wire fabric and #13 bars, if used, shall be included in the contract unit price bid per square meter for slope protection.

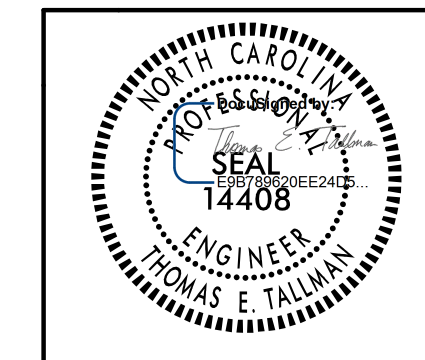
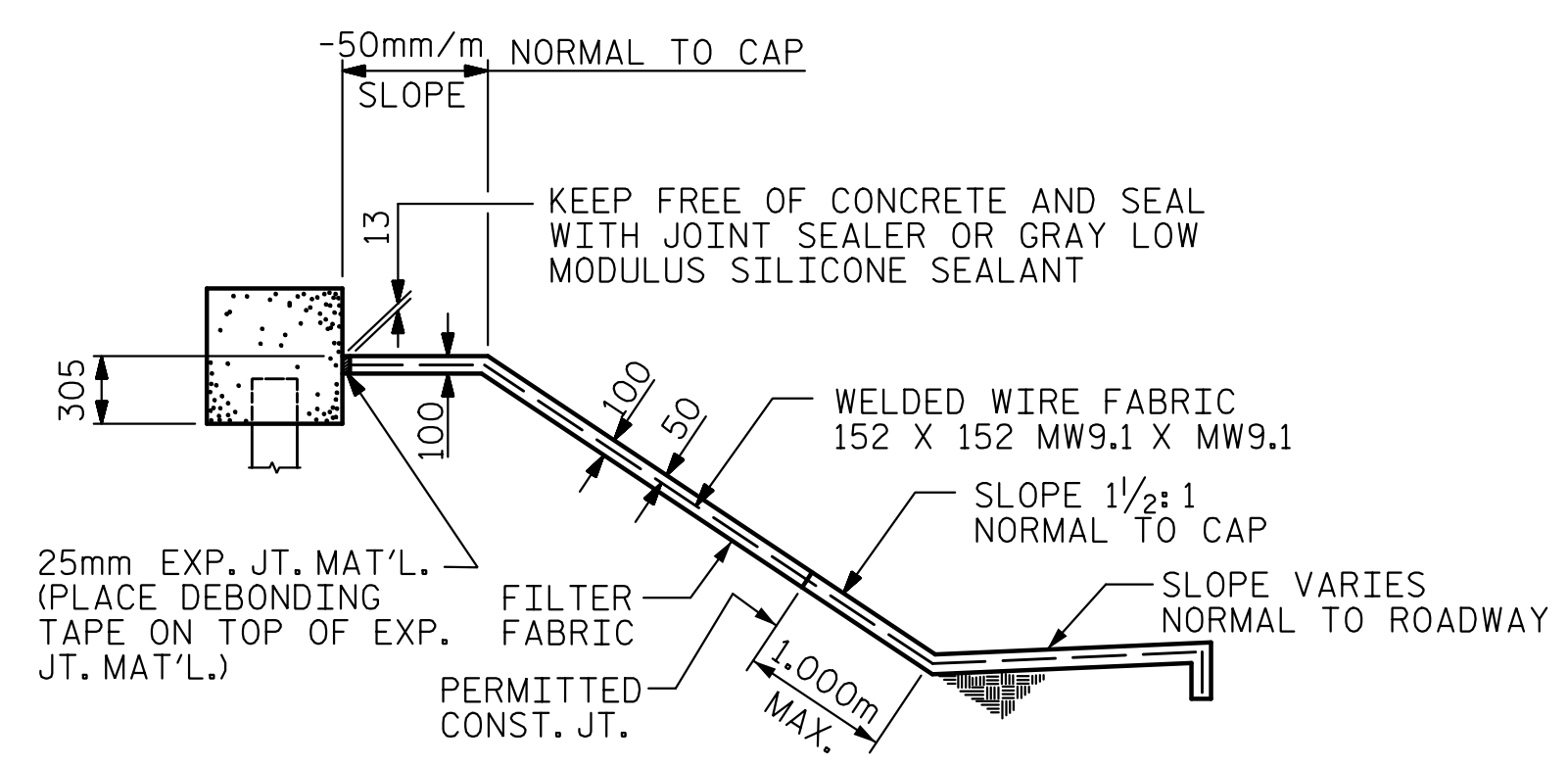
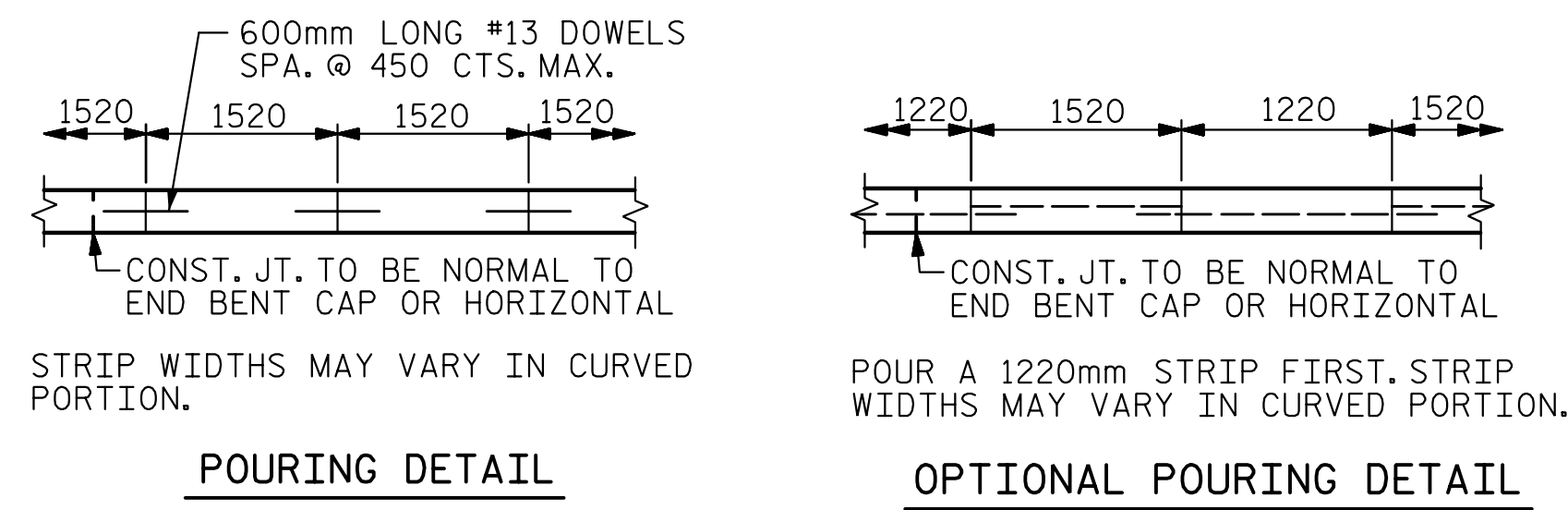


BRIDGE @ STA. 90+64.493 -LREV_SB-	100 mm SLOPE PROTECTION	* WELDED WIRE FABRIC 1520mm WIDE
	SQUARE METERS	APPROX. METERS
END BENT 1	252	193
END BENT 2	202	154

* QUANTITY SHOWN IS BASED ON 1520mm POURS.



PROJECT NO. R-2413CA
ROCKINGHAM COUNTY
 STATION: 90+64.493 -LREV_SB-



STATE OF NORTH CAROLINA
 DEPARTMENT OF TRANSPORTATION
 RALEIGH

**SLOPE PROTECTION
 DETAILS**

REVISIONS					
NO.	BY:	DATE:	NO.	BY:	DATE:
1			3		
2			4		

SHEET NO. S01-26
 TOTAL SHEETS 28



2/20/2015 10:53 AM C:\Users\sp\Documents\Projects\2015\2413CA\sp_01.dgn
 TCA Engineer (17)

DRAWN BY: D. H. CARTER DATE: FEB 2015
 CHECKED BY: T. E. TALLMAN DATE: FEB 2015
 DESIGN ENGINEER OF RECORD: T. E. TALLMAN DATE: FEB 2015