

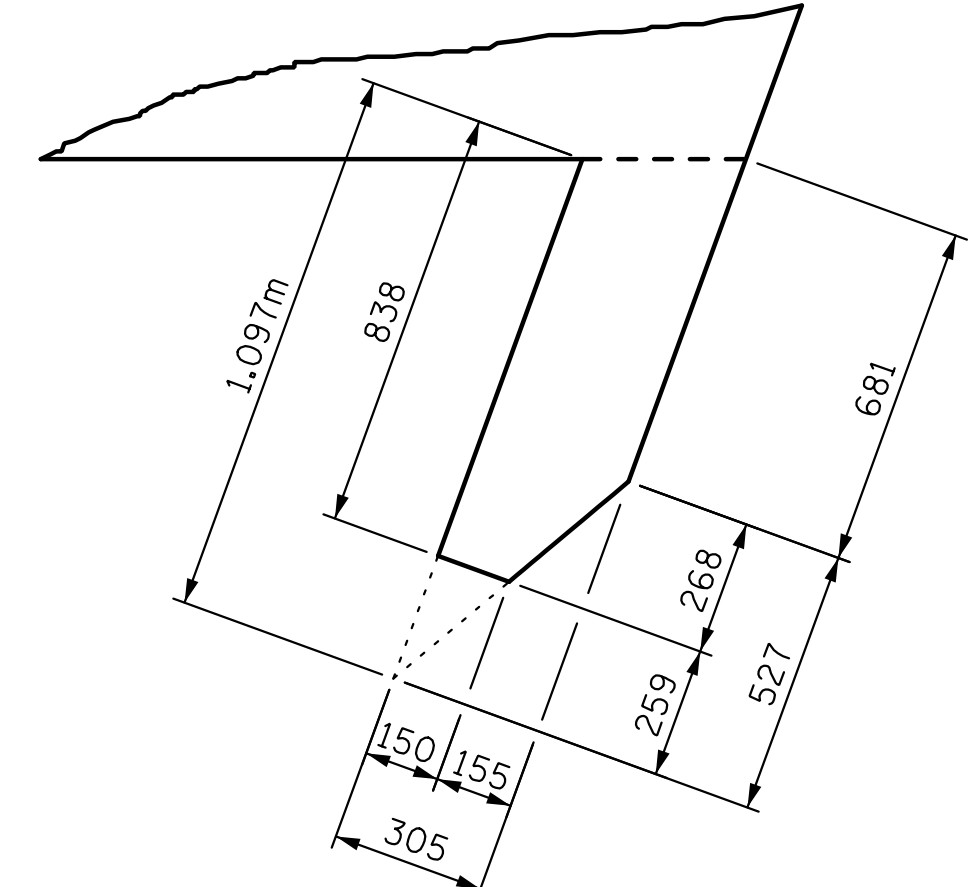
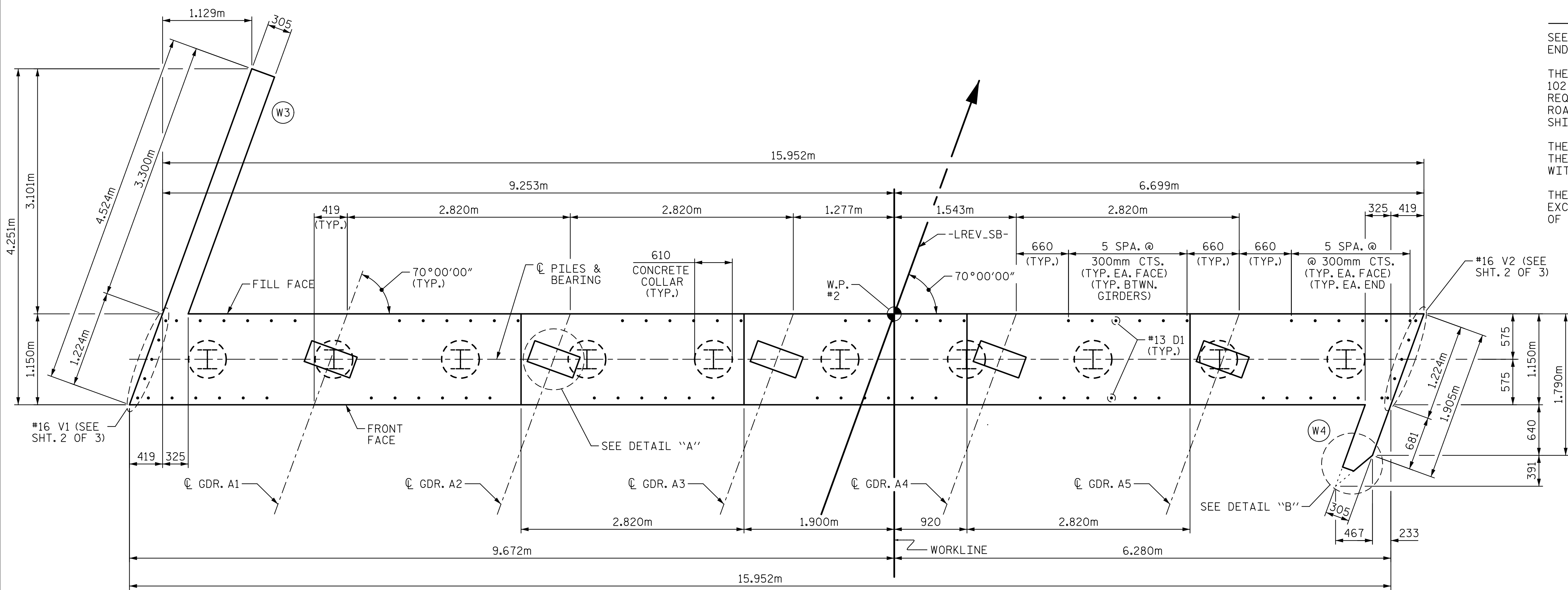
NOTES

SEE SUPERSTRUCTURE SHEETS FOR UPPER PART OF INTEGRAL END BENT DETAILS.

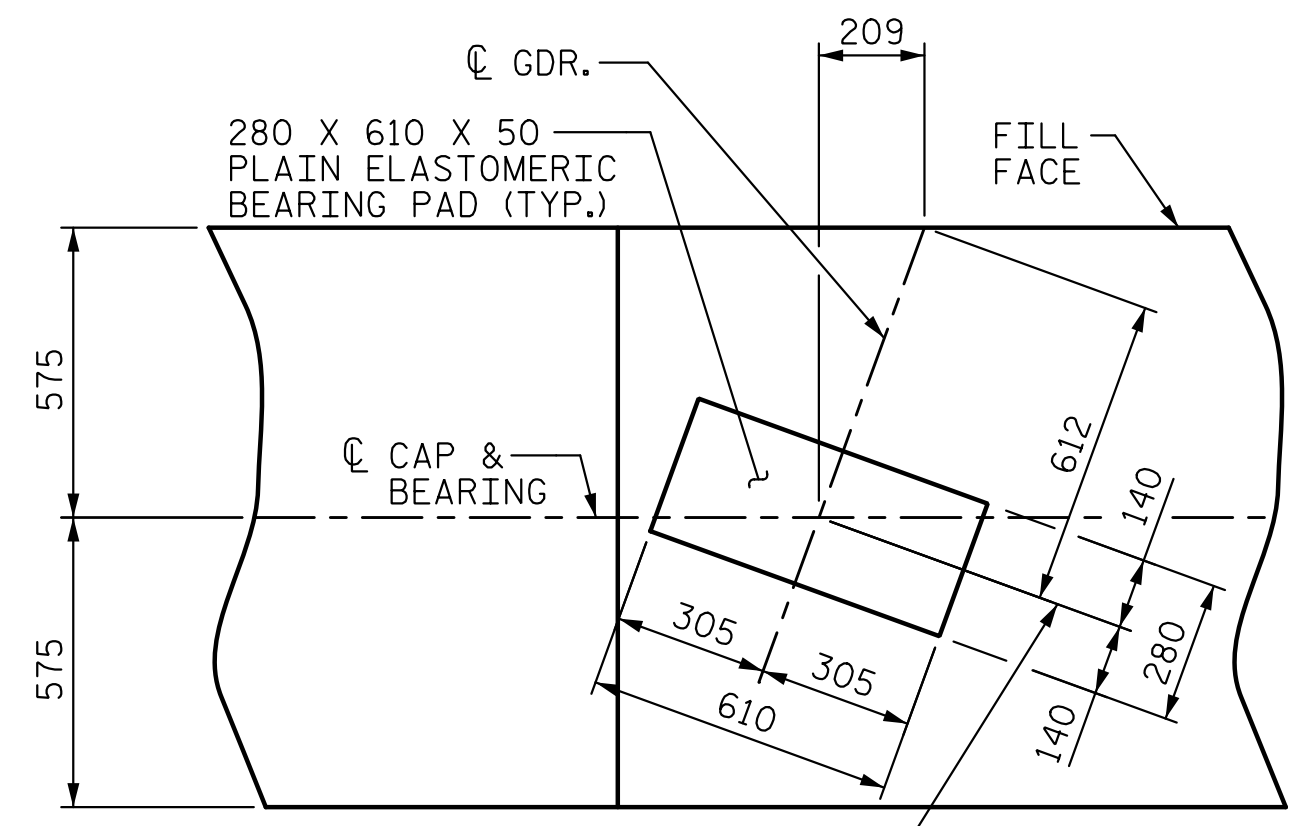
THE CONTRACTOR SHALL PROVIDE FOR INSTALLATION OF THE 102 DIAMETER DRAIN PIPE THROUGH THE WING WALL AS REQUIRED FOR REINFORCED BRIDGE APPROACH FILLS, SEE THE ROADWAY PLANS. REINFORCING STEEL IN THE WINGS MAY BE SHIFTED AS NECESSARY TO CLEAR THE DRAIN PIPE.

THE CONTRACTOR'S ATTENTION IS CALLED TO THE FACT THAT THE UPPER PART OF THE END BENT WINGS ARE TO BE POURED WITH POUR #2 OF THE SUPERSTRUCTURE.

THE TOP SURFACE OF THE END BENT CAP AND WINGS, EXCLUDING THE BEARING AREA, SHALL BE RAKED TO A DEPTH OF 6mm.



DETAIL "B"

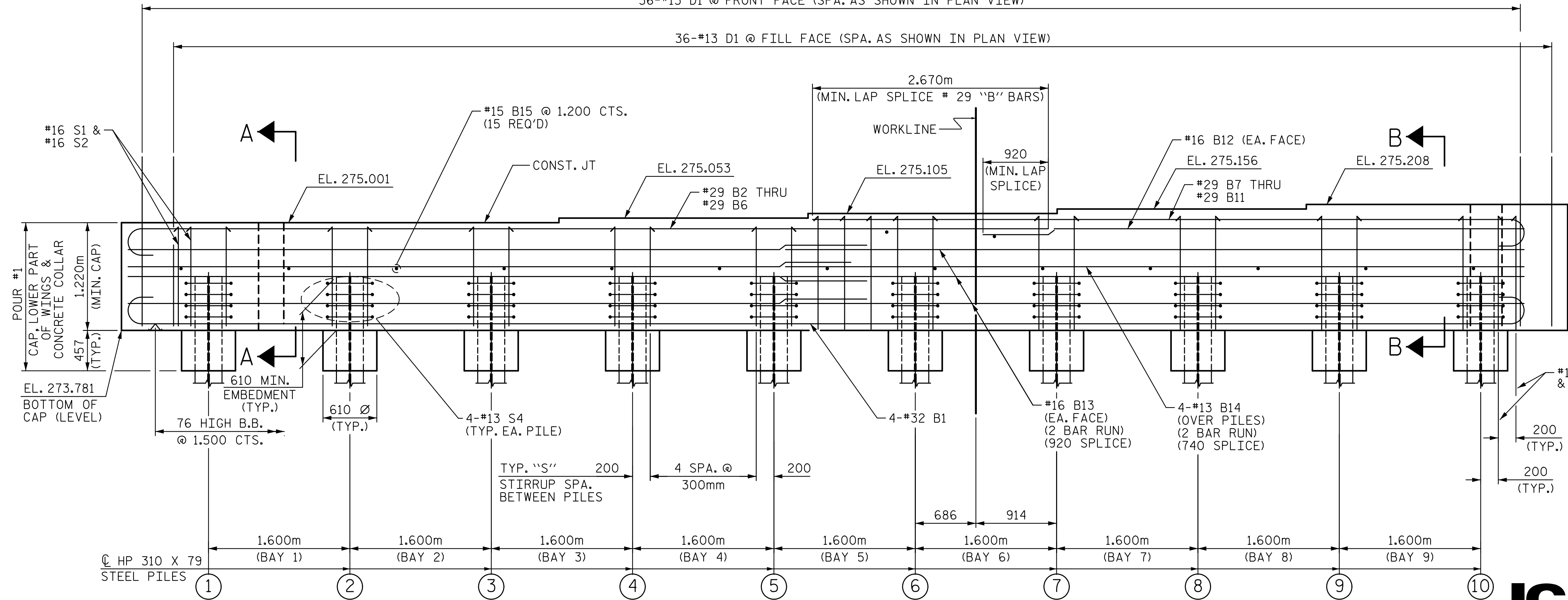


DETAIL "A"
(TYP. EA. GDR.)

STIRRUPS:
BAYS 1 THRU 4 : 5-#16 S1 & #16 S2
BAY 5 : 5-#16 S2, 1-#16 S1 & 4-#16 S3
BAYS 6 THRU 9 : 5-#16 S3 & #16 S2

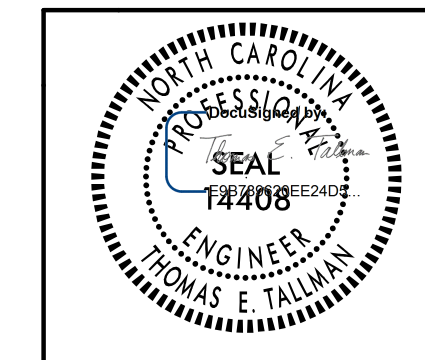
PLAN

36-#13 D1 @ FRONT FACE (SPA. AS SHOWN IN PLAN VIEW)
36-#13 D1 @ FILL FACE (SPA. AS SHOWN IN PLAN VIEW)



ELEVATION

PROJECT NO. R-2413CA
ROCKINGHAM COUNTY
STATION: 90+64.493 -LREV_SB-
SHEET 1 OF 3



| | | | | | |
|--|-----|-------|-----|-----|---------------------|
| STATE OF NORTH CAROLINA DEPARTMENT OF TRANSPORTATION RALEIGH | | | | | |
| SUBSTRUCTURE INTEGRAL END BENT #2 | | | | | |
| REVISIONS | | | | | |
| NO. | BY: | DATE: | NO. | BY: | DATE: |
| 1 | | | 3 | | |
| 2 | | | 4 | | |
| | | | | | SHEET NO. S01-23 |
| | | | | | TOTAL SHEETS 28 |



DRAWN BY : D. H. CARTER DATE : FEB 2015
CHECKED BY : T. E. TALLMAN DATE : FEB 2015
DESIGN ENGINEER OF RECORD: T. E. TALLMAN DATE : FEB 2015

2/20/2015 10:53:15 AM C:\Users\p1001\Documents\Projects\2015\2413CA\2413CA_S01.dwg