

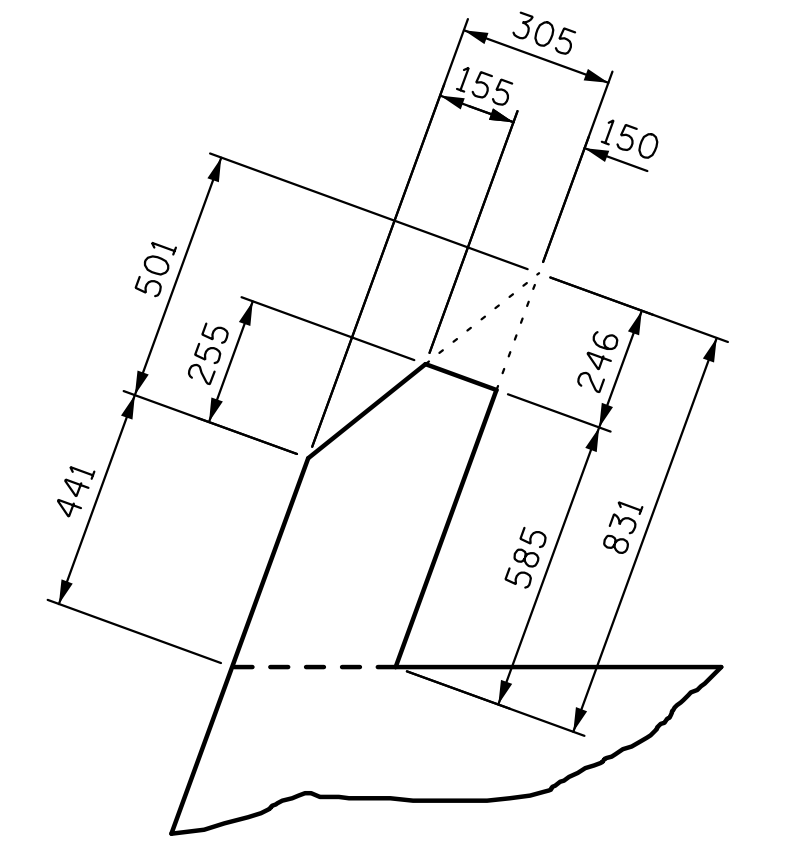
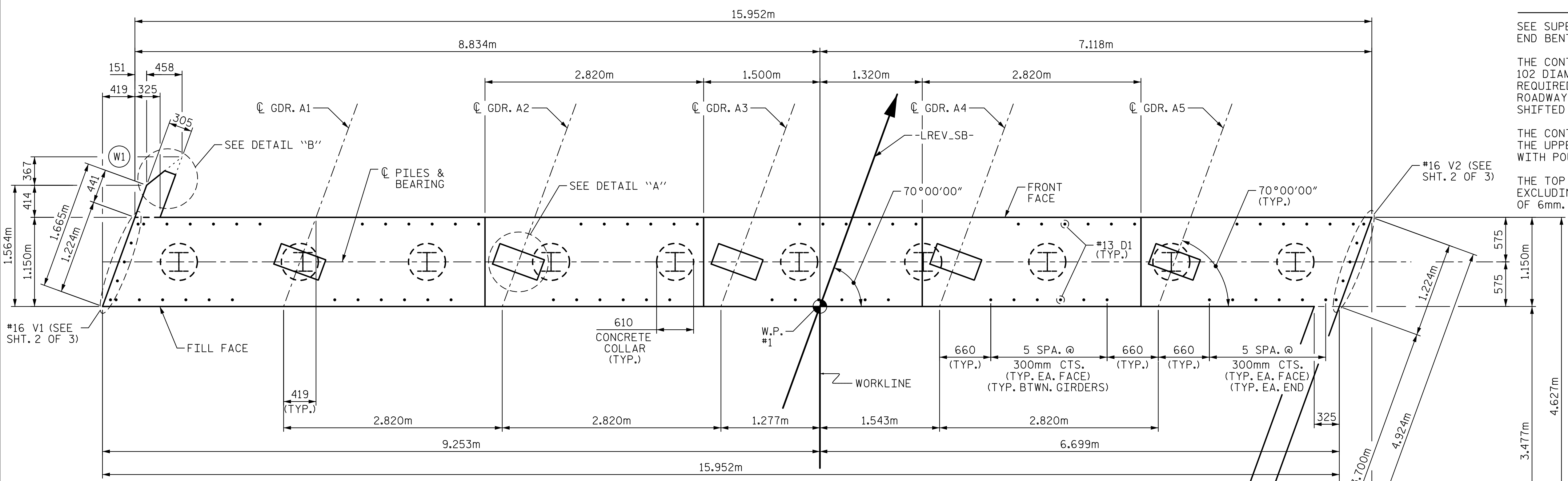
NOTES

SEE SUPERSTRUCTURE SHEETS FOR UPPER PART OF INTERGRAL END BENT DETAILS.

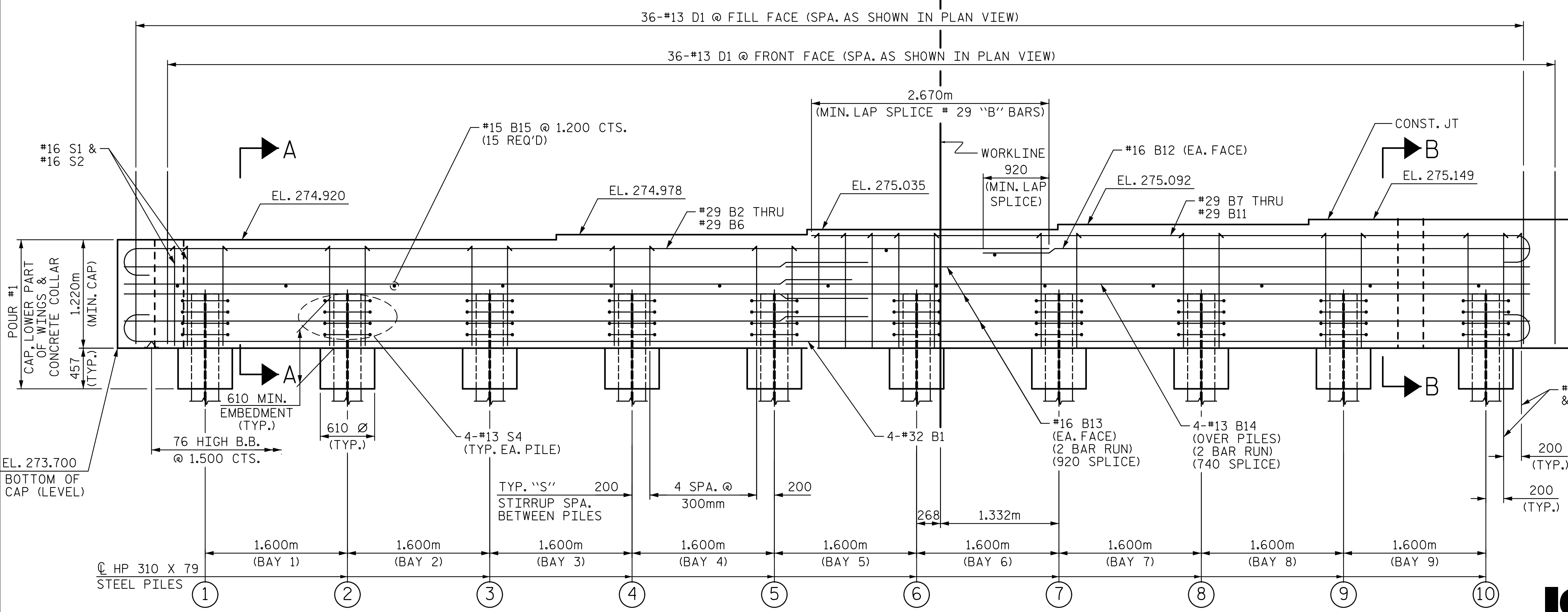
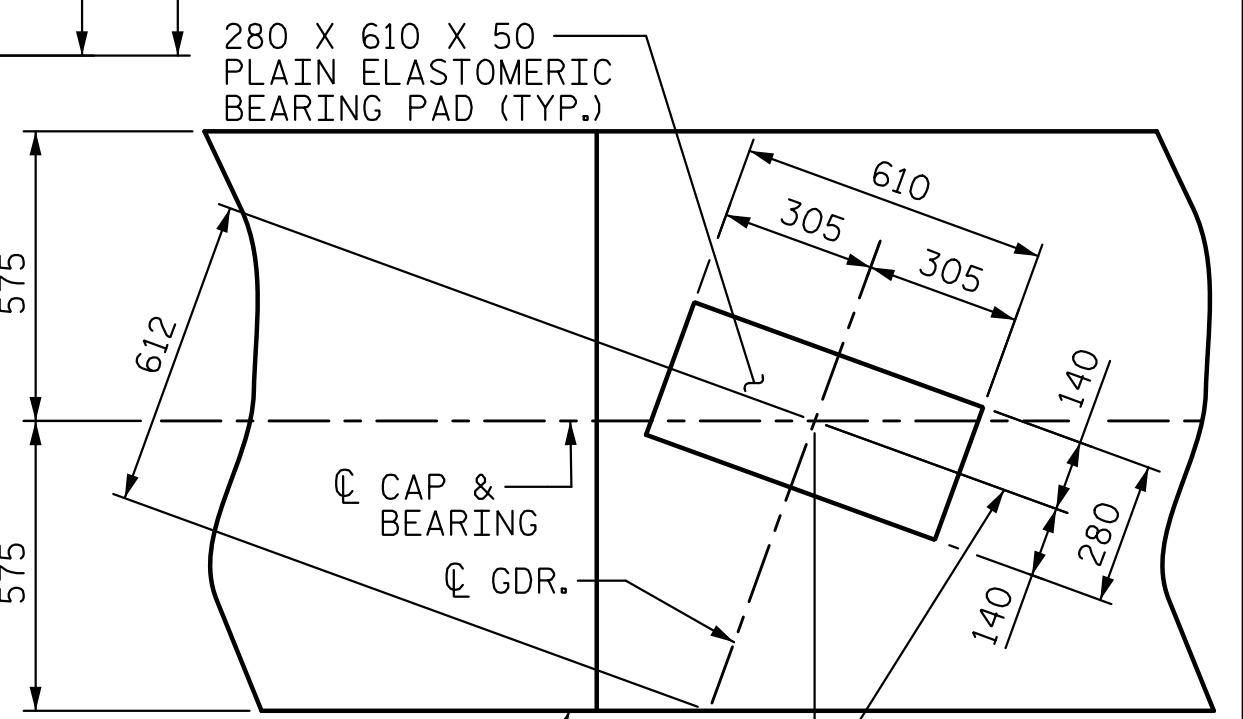
THE CONTRACTOR SHALL PROVIDE FOR INSTALLATION OF THE 102 DIAMETER DRAIN PIPE THROUGH THE WING WALL AS REQUIRED FOR REINFORCED BRIDGE APPROACH FILLS, SEE THE ROADWAY PLANS. REINFORCING STEEL IN THE WINGS MAY BE SHIFTED AS NECESSARY TO CLEAR THE DRAIN PIPE.

THE CONTRACTOR'S ATTENTION IS CALLED TO THE FACT THAT THE UPPER PART OF THE END BENT WINGS ARE TO BE POURED WITH POUR #2 OF THE SUPERSTRUCTURE.

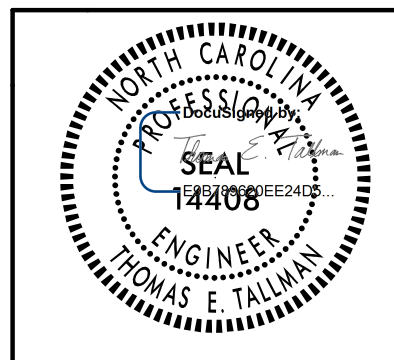
THE TOP SURFACE OF THE END BENT CAP AND WINGS, EXCLUDING THE BEARING AREA, SHALL BE RAKED TO A DEPTH OF 6mm.



STIRRUPS:
 BAYS 1 THRU 4 : 5-#16 S1 & #16 S2
 BAY 5 : 5-#16 S2, 1-#16 S1 & 4-#16 S3
 BAYS 6 THRU 9 : 5-#16 S3 & #16 S2



PROJECT NO. R-2413CA
 ROCKINGHAM COUNTY
 STATION: 90+64.493 -LREV_SB-
 SHEET 1 OF 3



STATE OF NORTH CAROLINA
 DEPARTMENT OF TRANSPORTATION
 RALEIGH
 SUBSTRUCTURE
 INTEGRAL END BENT #1

REVISIONS						SHEET NO. S01-20
NO.	BY:	DATE:	NO.	BY:	DATE:	
1			3			TOTAL SHEETS 28
2			4			



DRAWN BY: D. H. CARTER DATE: FEB 2015
 CHECKED BY: T. E. TALLMAN DATE: FEB 2015
 DESIGN ENGINEER OF RECORD: T. E. TALLMAN DATE: FEB 2015

2/20/2015
 C:\Users\pep\Documents\Projects\2015\2413CA\2413CA_sdb\ebi_01.dgn
 TCA Engineering, Inc.