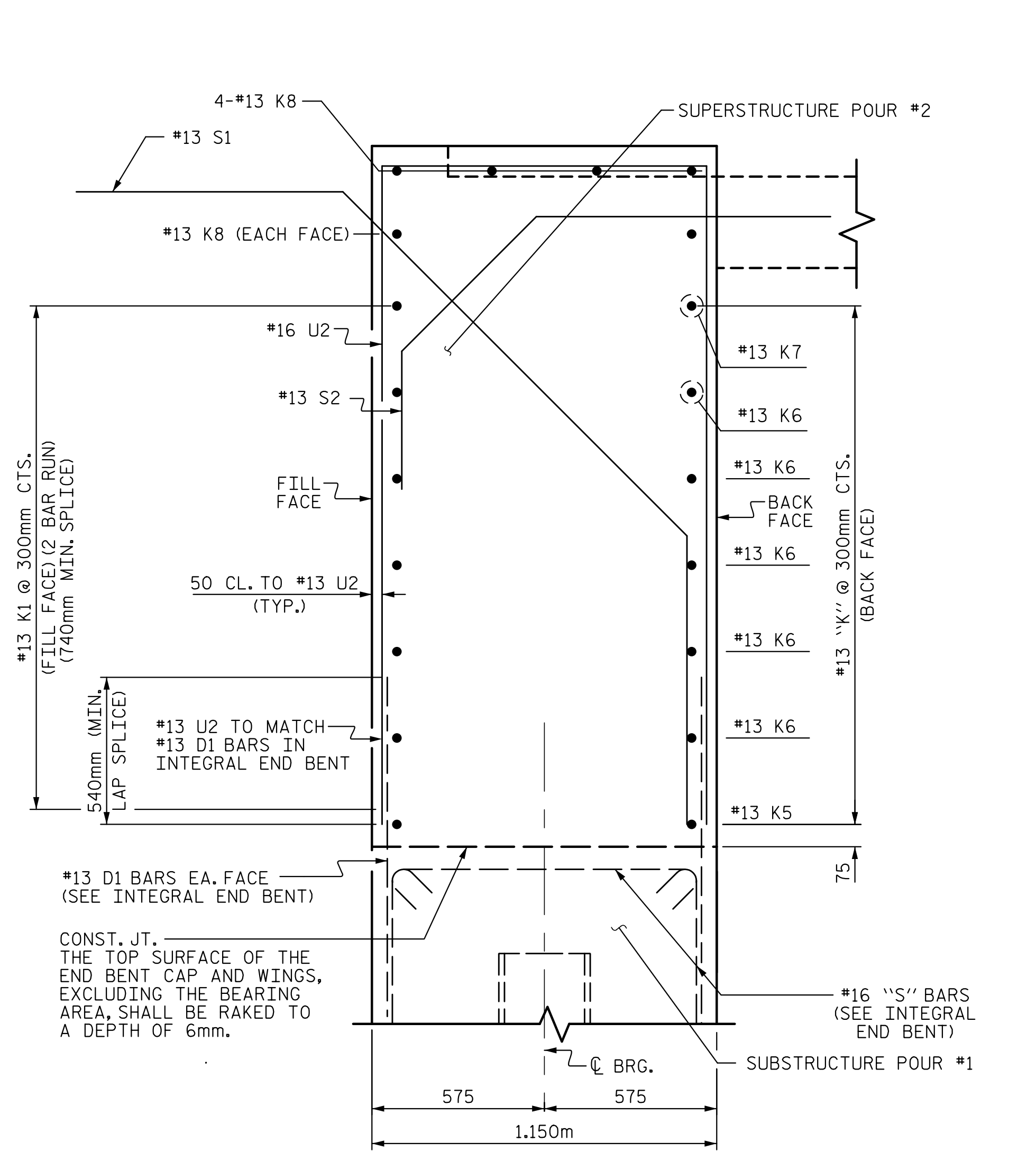


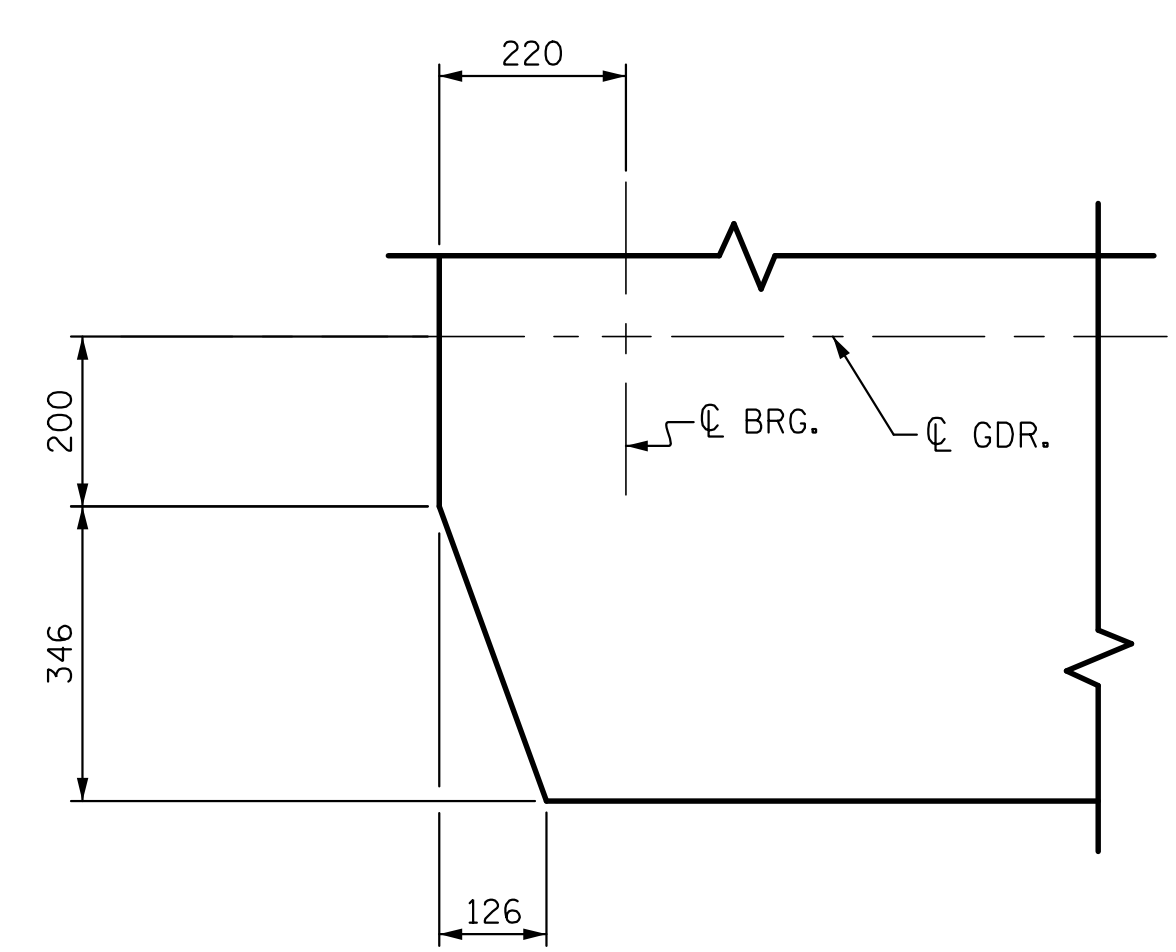
END OF GIRDER DETAIL AT INTEGRAL END BENT-BETWEEN GIRDERS  
(DIMENSIONS ARE PERPENDICULAR TO CAP UNLESS NOTED OTHERWISE)



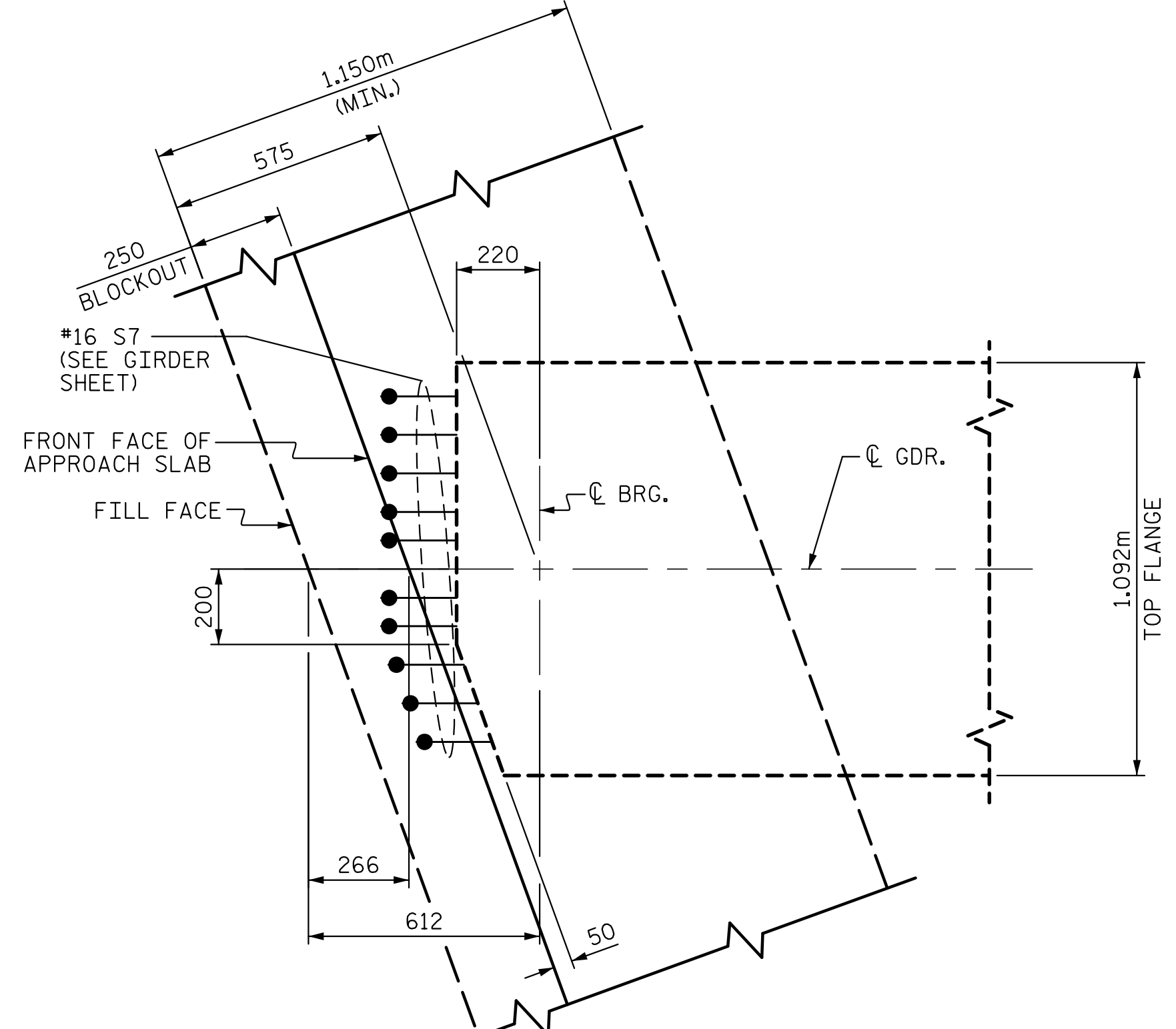
END OF GIRDER DETAIL AT INTEGRAL END BENT-OUTSIDE OF GIRDERS  
(DIMENSIONS ARE PERPENDICULAR TO CAP UNLESS NOTED OTHERWISE)

INTEGRAL END BENT DETAILS

PCG SUPERSTRUCTURE

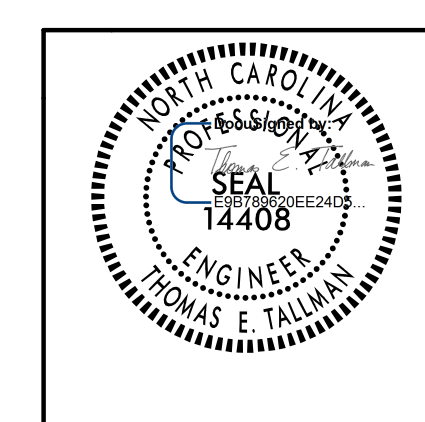


GIRDER TOP FLANGE CLIP DETAILS



PLAN OF GIRDER AT INTEGRAL END BENT

PROJECT NO. R-2413CA  
ROCKINGHAM COUNTY  
STATION: 90+64.493 -LREV\_SB-  
SHEET 2 OF 2



STATE OF NORTH CAROLINA DEPARTMENT OF TRANSPORTATION RALEIGH					
SUPERSTRUCTURE TYPICAL SECTION DETAILS					
REVISIONS					
NO.	BY:	DATE:	NO.	BY:	DATE:
1			3		
2			4		
SHEET NO. S01-6					TOTAL SHEETS 28



5121 Kingdom Way, Suite 100 Raleigh, NC 27607  
NC License No. P-09298

2/20/2015 10:53 AM C:\Users\pep\Documents\Projects\2413CA\Drawings\2413CA\_S01-6.dwg  
T.E. Tallman  
T.E. Tallman, Inc.

DRAWN BY: D. H. CARTER DATE: FEB 2015  
CHECKED BY: T. E. TALLMAN DATE: FEB 2015  
DESIGN ENGINEER OF RECORD: T. E. TALLMAN DATE: FEB 2015