

NOTES

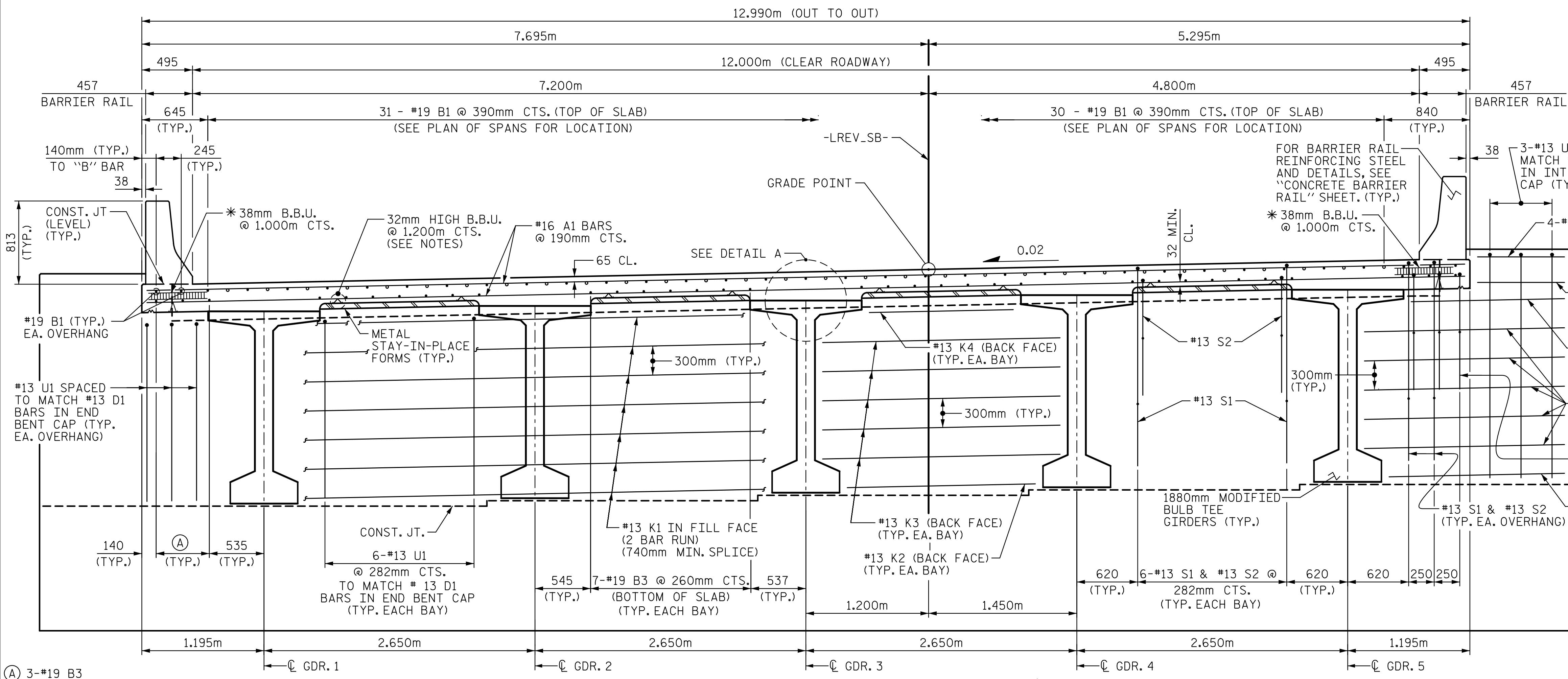
PROVIDE 32mm HIGH BEAM BOLSTERS UPPER AT 1.200m CTS. ATOP THE METAL STAY-IN-PLACE FORMS TO SUPPORT THE BOTTOM MAT OF "A" BARS. WHEN USING REMOVABLE FORMS, PROVIDE CONTINUOUS HIGH CHAIRS FOR METAL DECK (C.H.C.M.) @ 1.200m CTS. WITH A CLEAR DISTANCE OF 65 ABOVE THE TOP OF THE REMOVABLE FORM.

LONGITUDINAL STEEL MAY BE SHIFTED SLIGHTLY, AS NECESSARY, TO AVOID INTERFERENCE WITH STIRRUPS IN PRESTRESSED CONCRETE GIRDERS.

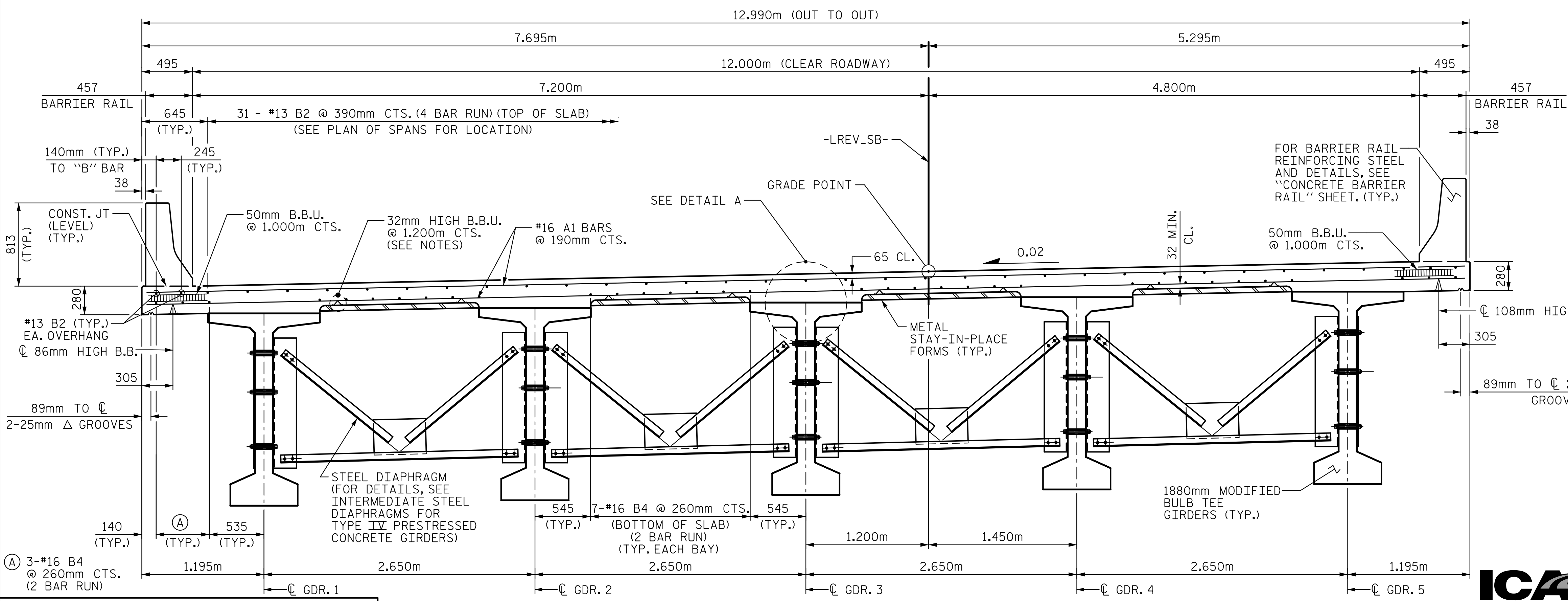
PREVIOUSLY CAST CONCRETE IN A CONTINUOUS UNIT SHALL HAVE ATTAINED A MINIMUM COMPRESSIVE STRENGTH OF 20.7 MPa BEFORE ADDITIONAL CONCRETE IS CAST IN THE UNIT.

BARRIER RAIL IN EACH CONTINUOUS UNIT SHALL NOT BE CAST UNTIL ALL SLAB CONCRETE IN THE UNIT HAS BEEN CAST AND HAS REACHED A MINIMUM COMPRESSIVE STRENGTH OF 20.7 MPa.

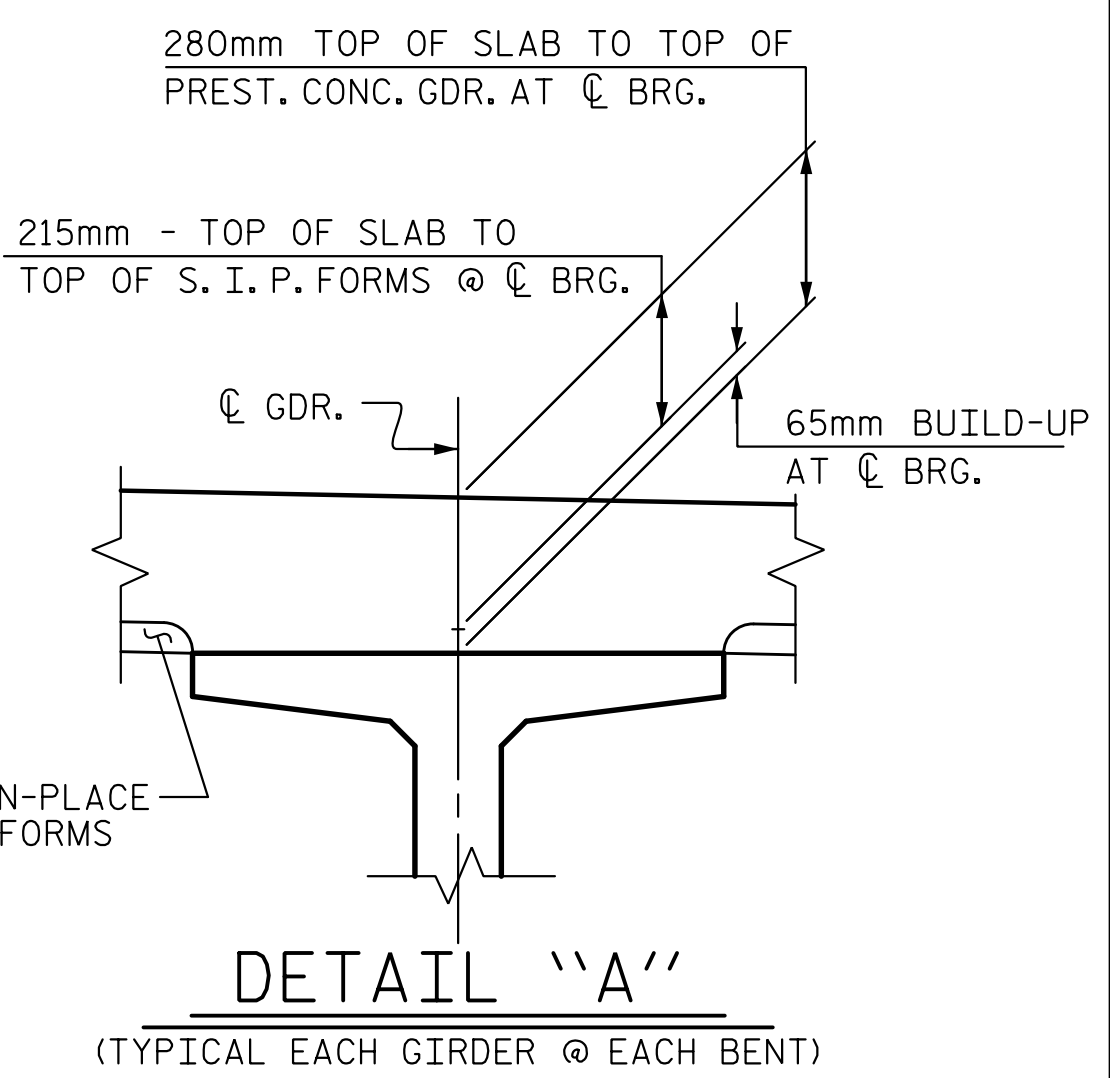
*USE THIS SIZE BAR SUPPORT IN THE AREAS WITH THE #19 "B" BARS. USE THE BAR SUPPORT AS SHOWN IN THE TYPICAL SECTION AT INTERMEDIATE DIAPHRAGM.



TYPICAL SECTION @ INTEGRAL END BENT



TYPICAL SECTION @ INTERMEDIATE DIAPHRAGMS

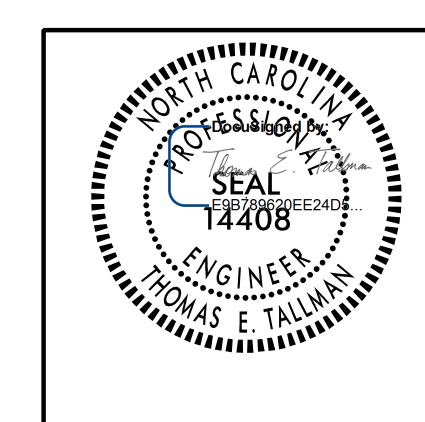


DETAIL "A"
(TYPICAL EACH GIRDER @ EACH BENT)

PROJECT NO. R-2413CA
ROCKINGHAM COUNTY
 STATION: 90+64.493 -LREV_SB-
 SHEET 1 OF 2

STATE OF NORTH CAROLINA
 DEPARTMENT OF TRANSPORTATION
 RALEIGH
 SUPERSTRUCTURE
 TYPICAL SECTION

REVISIONS					
NO.	BY:	DATE:	NO.	BY:	DATE:
1			3		
2			4		



2/20/2015 2:53 PM C:\Users\Tallman\Documents\Projects\SS-R2413C.sd...
 DRAWN BY : D. H. CARTER DATE : FEB 2015
 CHECKED BY : T. E. TALLMAN DATE : FEB 2015
 DESIGN ENGINEER OF RECORD : T. E. TALLMAN DATE : FEB 2015

SHEET NO. S01-5
 TOTAL SHEETS 28