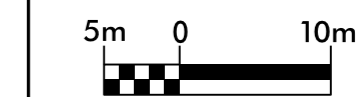
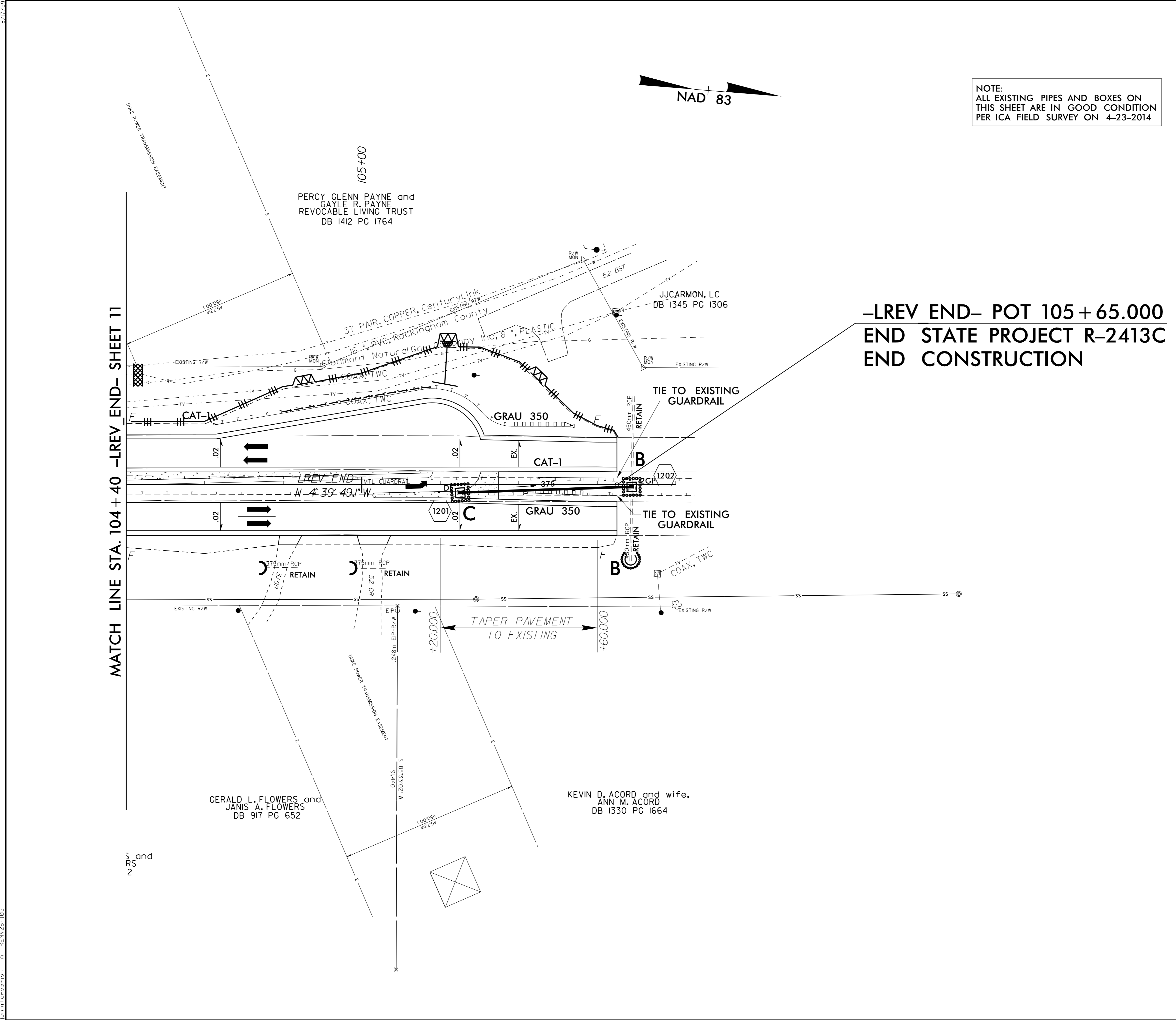


PROJECT REFERENCE NO. R-2413CA		SHEET NO. EC-21/CONST.12	
R/W SHEET NO.			
ROADWAY DESIGN ENGINEER		HYDRAULICS ENGINEER	
CONST. REV.			
R/W REV.			



NOTE:  
ALL EXISTING PIPES AND BOXES ON  
THIS SHEET ARE IN GOOD CONDITION  
PER ICA FIELD SURVEY ON 4-23-2014

RIGHT-OF-WAY FOR THIS PROJECT  
HAS BEEN ACQUIRED UNDER  
PROJECT R-2413C



**-LREV END- POT 105 + 65.000  
END STATE PROJECT R-2413C  
END CONSTRUCTION**

CONCRETE ISLAND

SEE SHEETS 20 & 21 FOR -LREV.END- PROFILES  
SEE SHEET 2B-1 FOR CONC. ISLAND DETAILS

8/11/2015  
 1445  
 D:\Projects\2413CA\EC-21\CONST.12.dwg  
 10:00 AM  
 10/26/15