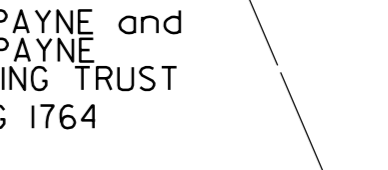
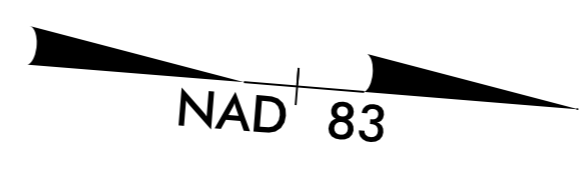


PROJECT REFERENCE NO. R-2413CA		SHEET NO. EC-20/CONST.11	
R/W SHEET NO.			
ROADWAY DESIGN ENGINEER		HYDRAULICS ENGINEER	
CONST.REV.			
R/W REV.			

RIGHT-OF-WAY FOR THIS PROJECT HAS BEEN ACQUIRED UNDER PROJECT R-2413C



METRIC



NOTE:
ALL EXISTING PIPES AND BOXES ON THIS SHEET ARE IN GOOD CONDITION PER ICA FIELD SURVEY ON 4-23-2014

-Y16A-
PI Sta 10+92.200
 $\Delta = 79^\circ 38' 56.4''$ (RT)
L = 34.753
T = 20.847
R = 25.000

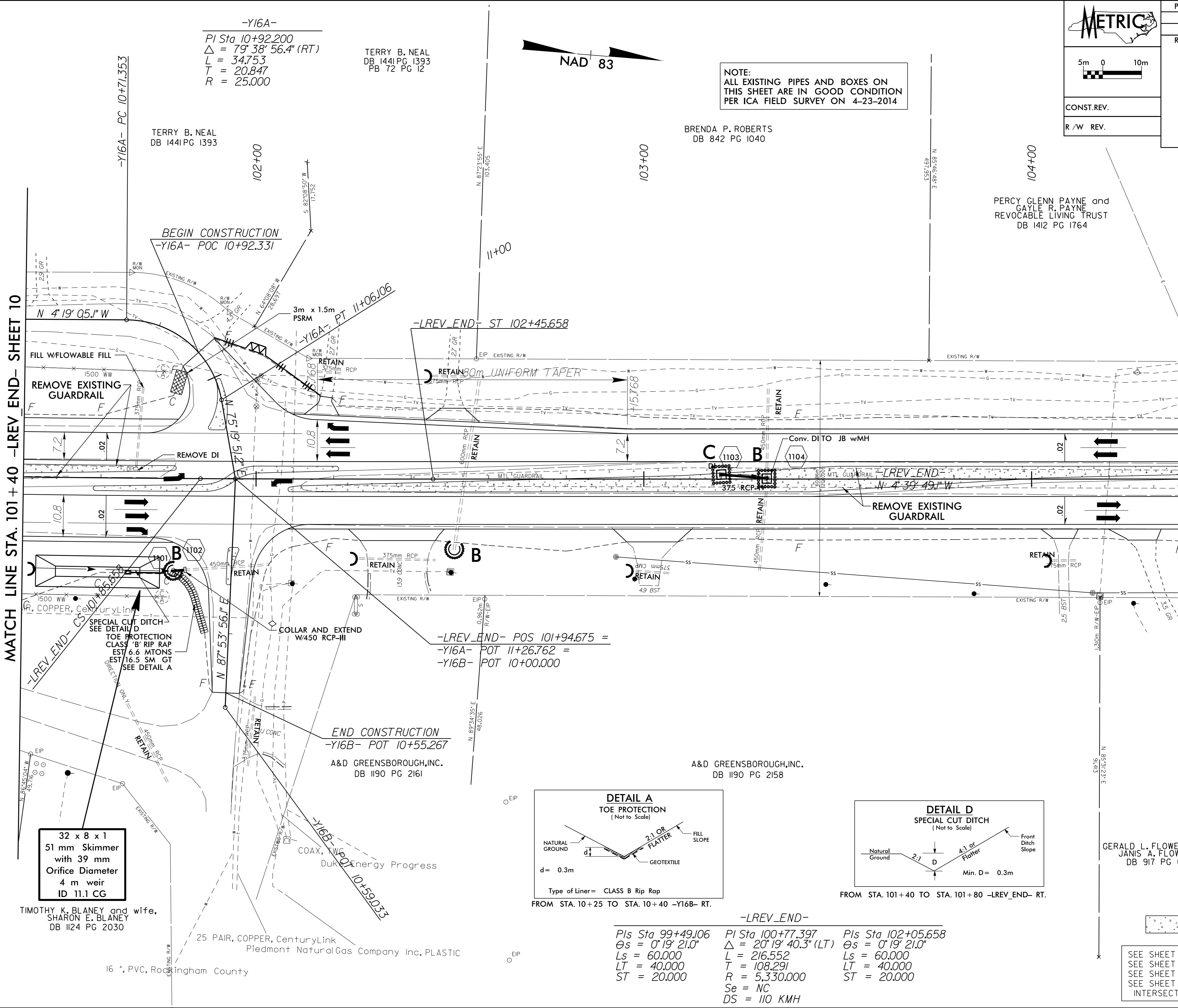
TERRY B. NEAL
DB 1441 PG 1393
PB 72 PG 12

BRENDA P. ROBERTS
DB 842 PG 1040

PERCY GLENN PAYNE and
GAYLE R. PAYNE
REVOCABLE LIVING TRUST
DB 1412 PG 1764

MATCH LINE STA. 101 + 40 -LREV_END- SHEET 10

MATCH LINE STA. 104 + 40 -LREV_END- SHEET 12



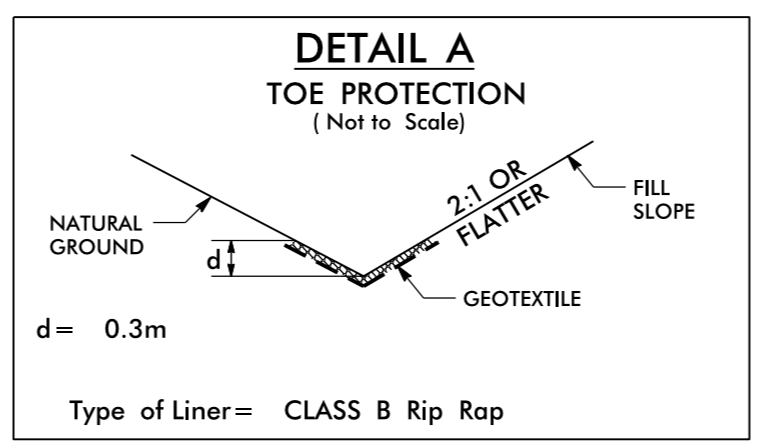
32 x 8 x 1
51 mm Skimmer
with 39 mm
Orifice Diameter
4 m weir
ID 11.1 CG

TIMOTHY K. BLANEY and wife,
SHARON E. BLANEY
DB 1124 PG 2030

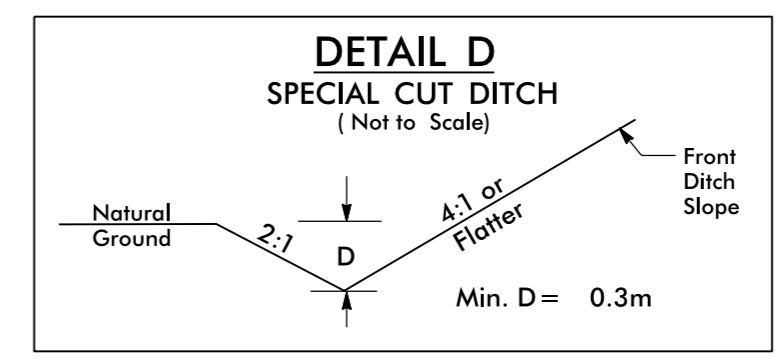
END CONSTRUCTION
-Y16B- POT 10+55.267
A&D GREENSBOROUGH, INC.
DB 1190 PG 2161

A&D GREENSBOROUGH, INC.
DB 1190 PG 2158

GERALD L. FLOWERS and
JANIS A. FLOWERS
DB 917 PG 652



FROM STA. 10+25 TO STA. 10+40 -Y16B- RT.



FROM STA. 101+40 TO STA. 101+80 -LREV_END- RT.

-LREV_END-
PIs Sta 99+49.106 PI Sta 100+77.397 PIs Sta 102+05.658
 $\Theta s = 0^\circ 19' 21.0''$ $\Delta = 20^\circ 19' 40.3''$ (LT) $\Theta s = 0^\circ 19' 21.0''$
Ls = 60.000 L = 216.552 Ls = 60.000
LT = 40.000 T = 108.291 LT = 40.000
ST = 20.000 R = 5,330.000 ST = 20.000
Se = NC
DS = 110 KM/H

CONCRETE ISLAND

SEE SHEET 20 FOR -LREV_END- PROFILES
SEE SHEET 24 FOR -Y16A- & -Y16B- PROFILES
SEE SHEET 2B-1 FOR CONC. ISLAND DETAILS
SEE SHEET 2B-2 FOR -Y16A- & -Y16B- INTERSECTION DETAILS

8/11/2013
11 FEB 2015 14:06
C:\Users\pca\Documents\Projects\2413CA-EC-pnh\11.dgn
11 FEB 2015 14:06
C:\Users\pca\Documents\Projects\2413CA-EC-pnh\11.dgn
11 FEB 2015 14:06
C:\Users\pca\Documents\Projects\2413CA-EC-pnh\11.dgn