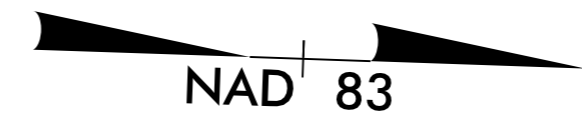


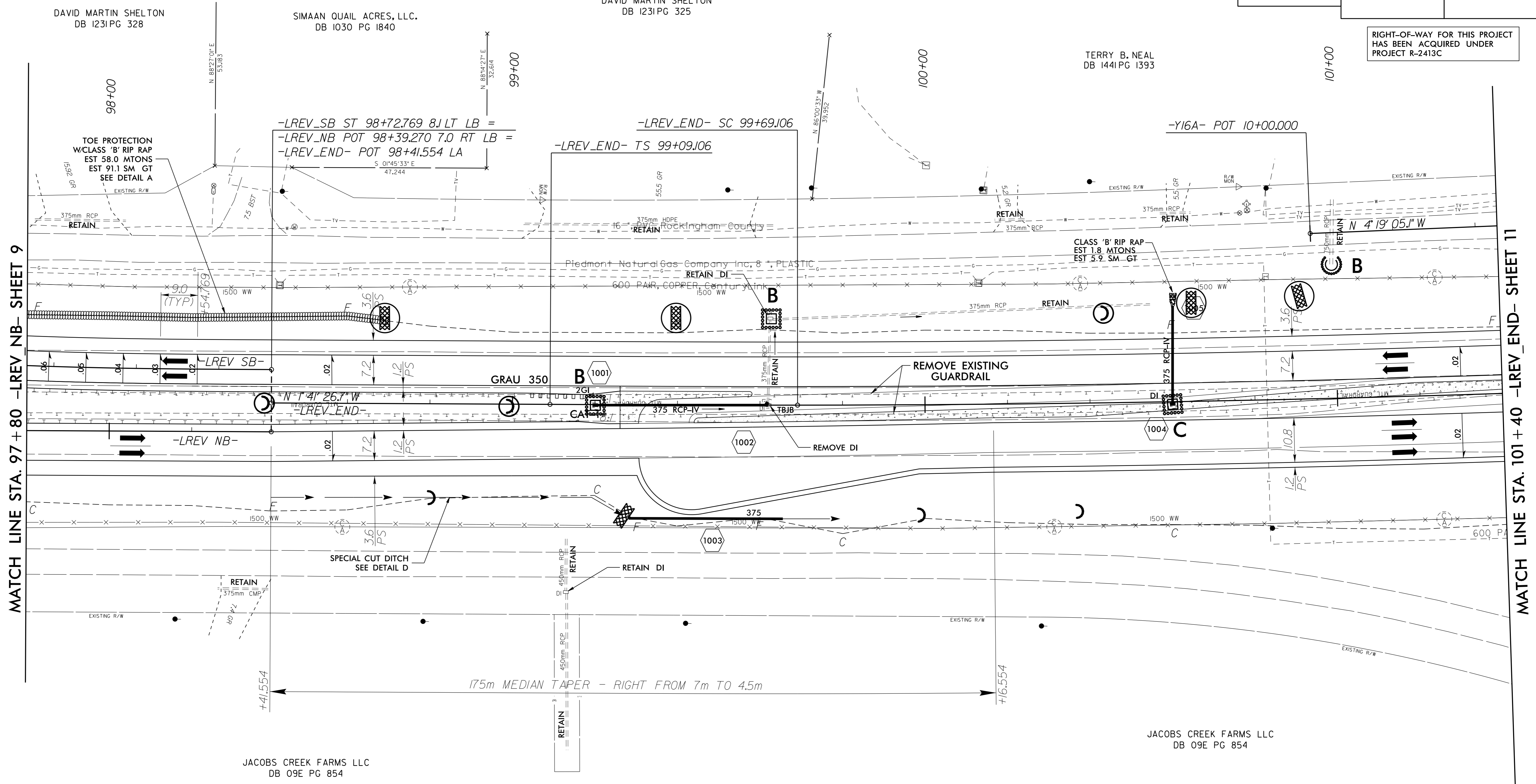
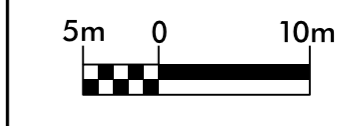
PROJECT REFERENCE NO. R-2413CA		SHEET NO. EC-19/CONST.10	
R/W SHEET NO.			
ROADWAY DESIGN ENGINEER		HYDRAULICS ENGINEER	
CONST. REV.			
R/W REV.			

RIGHT-OF-WAY FOR THIS PROJECT HAS BEEN ACQUIRED UNDER PROJECT R-2413C

-LREV_SB-
 Pls Sta 96+02.477 PI Sta 97+17.024 Pls Sta 98+30.772
 $\Theta_s = 2^\circ 12' 03.6''$ $\Delta = 13^\circ 01' 01.3''$ (LT) $\Theta_s = 2^\circ 12' 03.6''$
 $L_s = 63,000$ $L = 186,296$ $L_s = 63,000$
 $LT = 42,003$ $T = 93,551$ $LT = 42,003$
 $ST = 21,003$ $R = 820,000$ $ST = 21,003$
 $Se = 0.07$
 $DS = 110$ KMH

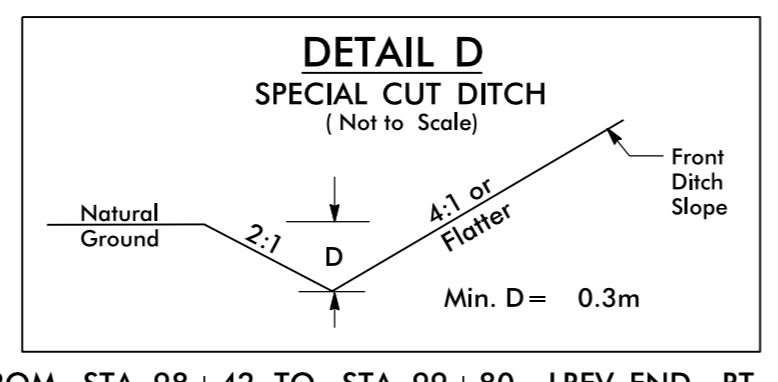
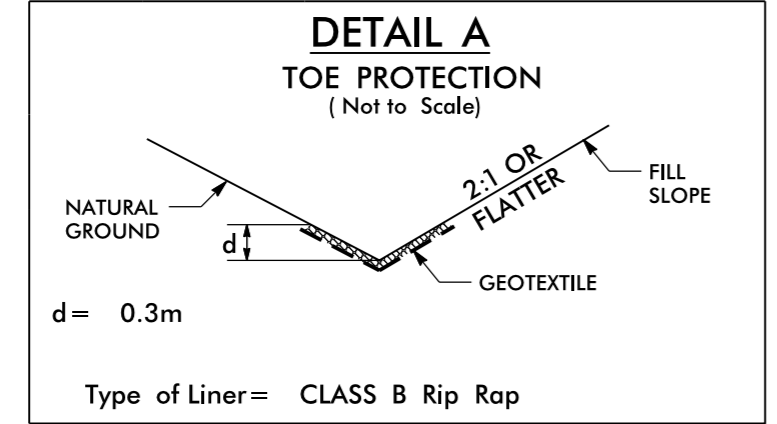


NOTE:
 ALL EXISTING PIPES AND BOXES ON THIS SHEET ARE IN GOOD CONDITION PER ICA FIELD SURVEY ON 4-23-2014



MATCH LINE STA. 97 + 80 -LREV_NB- SHEET 9

MATCH LINE STA. 101 + 40 -LREV_END- SHEET 11



-LREV_END-
 Pls Sta 99+49.106 PI Sta 100+77.397 Pls Sta 102+05.658
 $\Theta_s = 0^\circ 19' 21.0''$ $\Delta = 20^\circ 19' 40.3''$ (LT) $\Theta_s = 0^\circ 19' 21.0''$
 $L_s = 60,000$ $L = 216,552$ $L_s = 60,000$
 $LT = 40,000$ $T = 108,291$ $LT = 40,000$
 $ST = 20,000$ $R = 5,330,000$ $ST = 20,000$
 $Se = NC$
 $DS = 110$ KMH

CONCRETE ISLAND

SEE SHEET 16 FOR -LREV_NB- PROFILE
 SEE SHEET 18 FOR -LREV_SB- PROFILE
 SEE SHEET 19 FOR -LREV_END- PROFILES
 SEE SHEET 2B-1 FOR CONC. ISLAND DETAILS

8/17/2015
 I:\FEB-2015_13551\13551\DWG\CON\2413CA-EC-19-18.dwg
 10:00:00 AM 2/26/2015