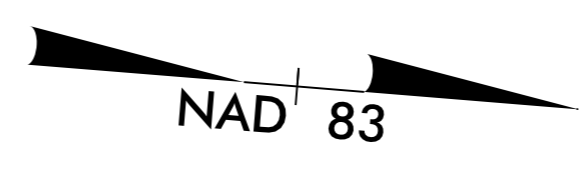


CLEARING AND GRUBBING
EROSION CONTROL FOR
CONSTRUCTION SHEET 11

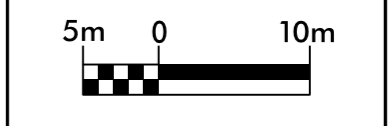
NOTE:
PLACE TEMPORARY ROCK SEDIMENT DAMS TYPE-B
AND TEMPORARY ROCK SILT CHECKS TYPE-A AT
DRAINAGE OUTLETS.

-Y16A-
PI Sta 10+92.200
 $\Delta = 79^\circ 38' 56.4" (RT)$
L = 34.753
T = 20.847
R = 25.000

TERRY B. NEAL
DB 1441 PG 1393
PB 72 PG 12



NOTE:
ALL EXISTING PIPES AND BOXES ON
THIS SHEET ARE IN GOOD CONDITION
PER ICA FIELD SURVEY ON 4-23-2014



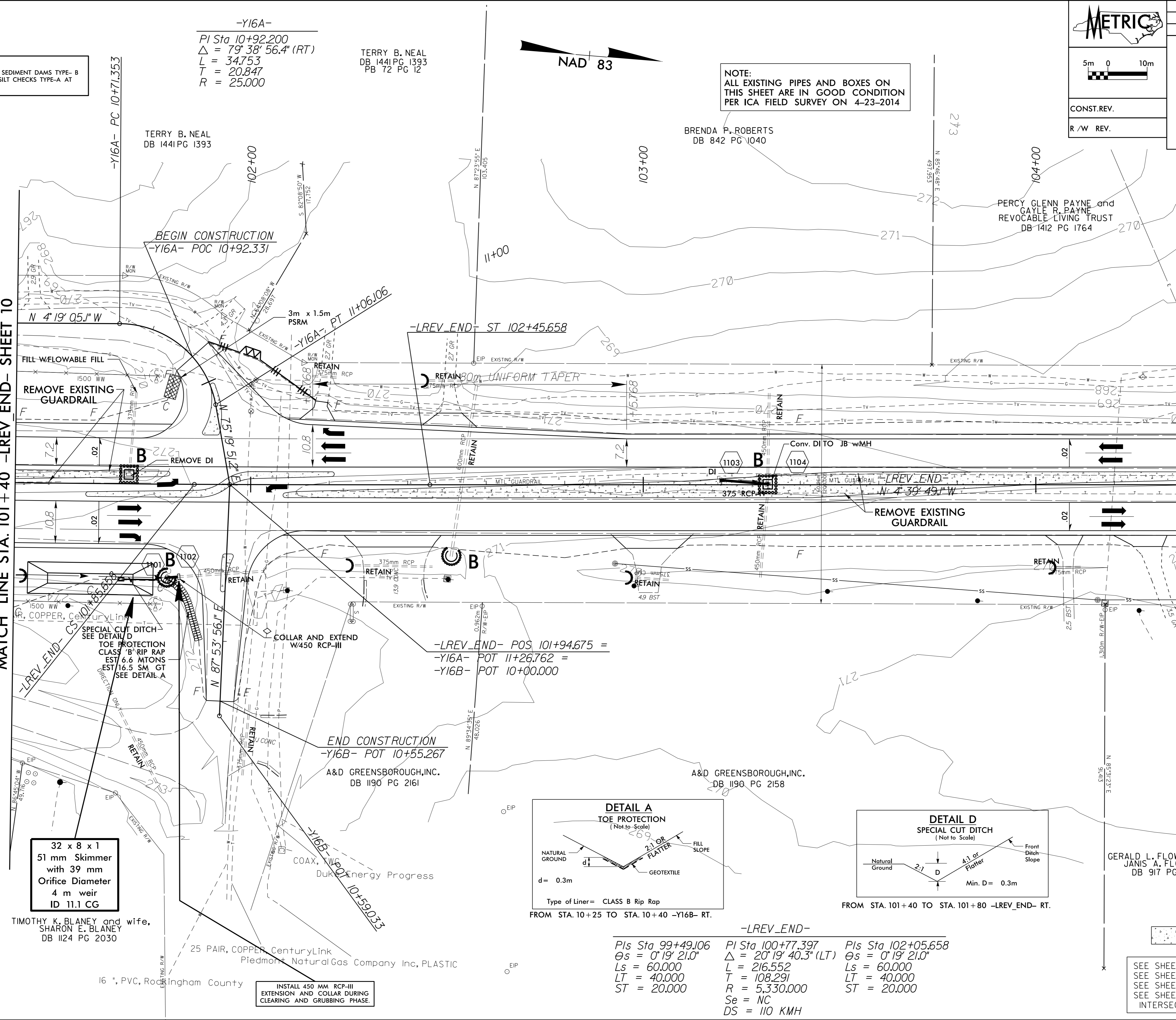
CONST. REV.
R/W REV.

PROJECT REFERENCE NO. R-2413CA	SHEET NO. EC-11/CONST.11
R/W SHEET NO.	
ROADWAY DESIGN ENGINEER	HYDRAULICS ENGINEER

RIGHT-OF-WAY FOR THIS PROJECT
HAS BEEN ACQUIRED UNDER
PROJECT R-2413C

MATCH LINE STA. 101 + 40 -LREV_END- SHEET 10

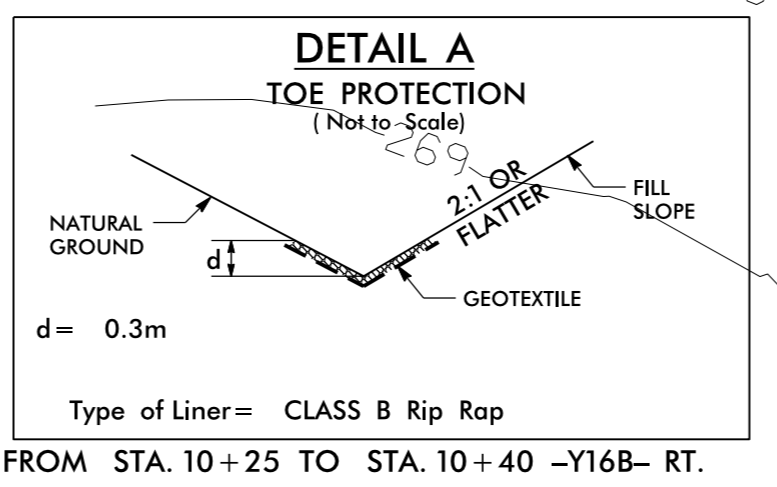
MATCH LINE STA. 104 + 40 -LREV_END- SHEET 12



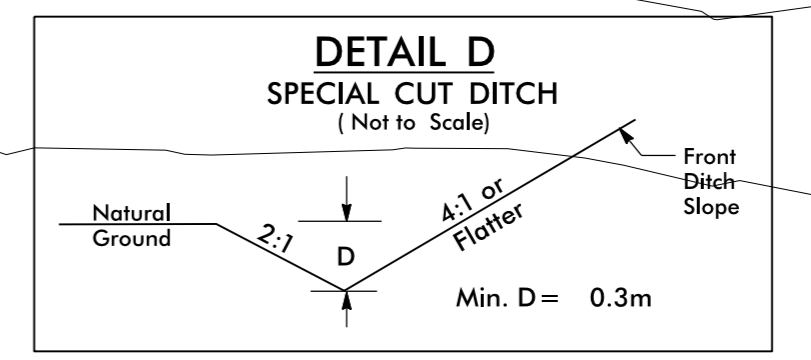
32 x 8 x 1
51 mm Skimmer
with 39 mm
Orifice Diameter
4 m weir
ID 11.1 CG

TIMOTHY K. BLANEY and wife,
SHARON E. BLANEY
DB 1124 PG 2030

INSTALL 450 MM RCP-III
EXTENSION AND COLLAR DURING
CLEARING AND GRUBBING PHASE.



FROM STA. 10+25 TO STA. 10+40 -Y16B- RT.



FROM STA. 101+40 TO STA. 101+80 -LREV_END- RT.

-LREV_END-

PIs Sta 99+49.106	PI Sta 100+77.397	PIs Sta 102+05.658
$\Theta s = 0^\circ 19' 21.0"$	$\Delta = 20^\circ 19' 40.3" (LT)$	$\Theta s = 0^\circ 19' 21.0"$
Ls = 60.000	Ls = 216.552	Ls = 60.000
LT = 40.000	T = 108.291	LT = 40.000
ST = 20.000	R = 5,330.000	ST = 20.000
	Se = NC	
	DS = 110 KM/H	

CONCRETE ISLAND

SEE SHEET 20 FOR -LREV_END- PROFILES
SEE SHEET 24 FOR -Y16A- & -Y16B- PROFILES
SEE SHEET 2B-1 FOR CONC. ISLAND DETAILS
SEE SHEET 2B-2 FOR -Y16A- & -Y16B-
INTERSECTION DETAILS

8/11/2015 14:08 I:\FEB-2015_1408\CONC\2413CA\2413CA-EC.dwg (pnh11.dgn) PLOT: 2/28/2015 10:58:10 AM