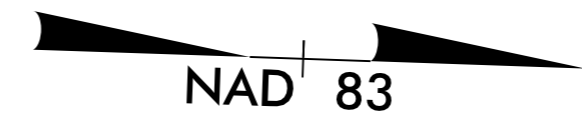


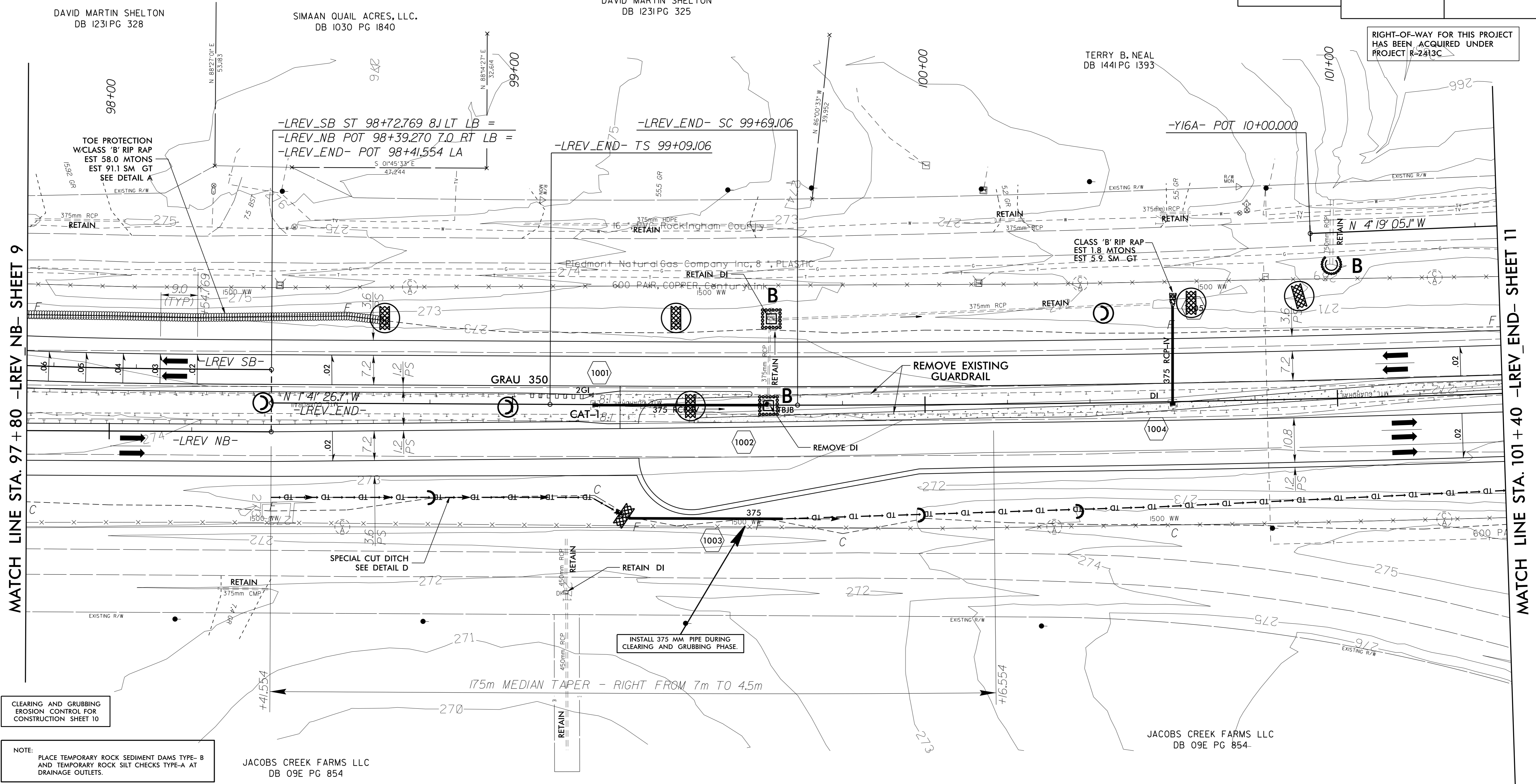
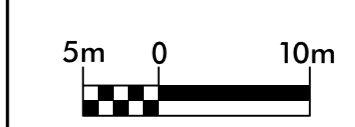
PROJECT REFERENCE NO. R-2413CA		SHEET NO. EC-10/CONST.10	
R/W SHEET NO.			
ROADWAY DESIGN ENGINEER		HYDRAULICS ENGINEER	
CONST. REV.			
R/W REV.			

-LREV_SB-

Pls Sta 96+02.477	PI Sta 97+17.024	Pls Sta 98+30.772
$\Theta_s = 2^\circ 12' 03.6''$	$\Delta = 13^\circ 01' 01.3''$ (LT)	$\Theta_s = 2^\circ 12' 03.6''$
Ls = 63,000	L = 186,296	Ls = 63,000
LT = 42,003	T = 93,551	LT = 42,003
ST = 21,003	R = 820,000	ST = 21,003
	Se = 0.07	
	DS = 110 KMH	

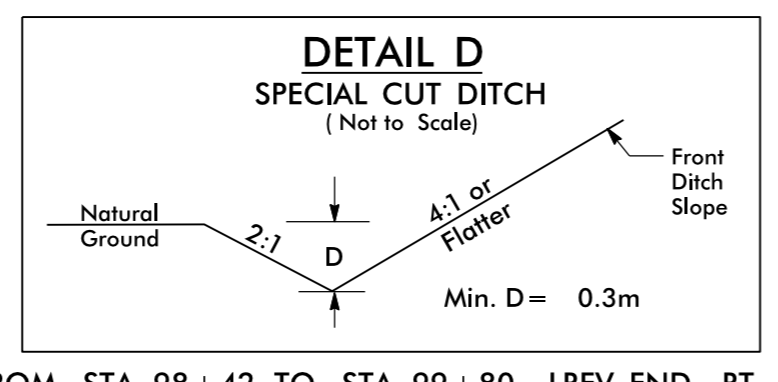
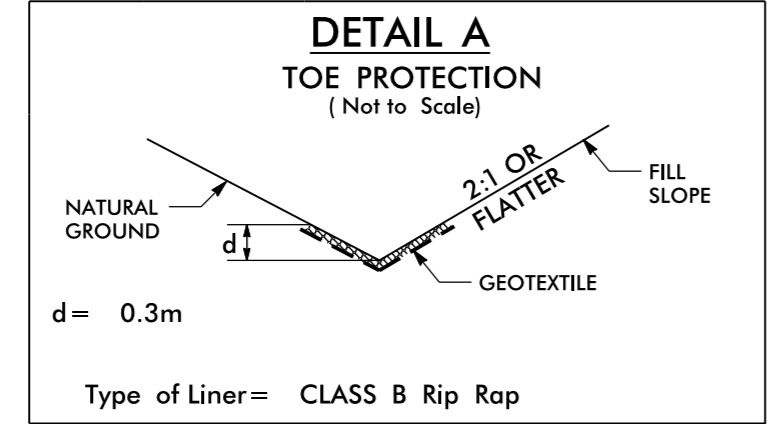


NOTE:
ALL EXISTING PIPES AND BOXES ON
THIS SHEET ARE IN GOOD CONDITION
PER ICA FIELD SURVEY ON 4-23-2014



CLEARING AND GRUBBING
EROSION CONTROL FOR
CONSTRUCTION SHEET 10

NOTE:
PLACE TEMPORARY ROCK SEDIMENT DAMS TYPE-B
AND TEMPORARY ROCK SILT CHECKS TYPE-A AT
DRAINAGE OUTLETS.



-LREV_END-

Pls Sta 99+49.106	PI Sta 100+77.397	Pls Sta 102+05.658
$\Theta_s = 0^\circ 19' 21.0''$	$\Delta = 20^\circ 19' 40.3''$ (LT)	$\Theta_s = 0^\circ 19' 21.0''$
Ls = 60,000	L = 216,552	Ls = 60,000
LT = 40,000	T = 108,291	LT = 40,000
ST = 20,000	R = 5,330,000	ST = 20,000
	Se = NC	
	DS = 110 KMH	

CONCRETE ISLAND

SEE SHEET 16 FOR -LREV_NB- PROFILE
SEE SHEET 18 FOR -LREV_SB- PROFILE
SEE SHEET 19 FOR -LREV_END- PROFILES
SEE SHEET 2B-1 FOR CONC. ISLAND DETAILS

8/17/2018
 11 FEB 2015 15:50
 C:\Users\pca\AppData\Local\Temp\2413CA-EC-psh10.dgn
 10:00:00
 10:00:00
 10:00:00