

# FINAL PAVEMENT MARKING SCHEDULE

| MATERIAL                                  | SYMBOL | DESCRIPTION              |
|---|--------|--------------------------|
| <b>PAVEMENT MARKING</b>                   |        |                          |
| <u>COLD APPLIED PLASTIC, TYPE II (6")</u> |        |                          |
|   | C6     | WHITE EDGELINE           |
|   | C7     | YELLOW EDGELINE          |
|   | CJ     | 10' WHITE SKIP           |
| <u>THERMOPLASTIC (4", 90 MILS)</u>        |        |                          |
|   | TA     | WHITE EDGELINE           |
|   | TB     | YELLOW EDGELINE          |
| <u>THERMOPLASTIC (4", 120 MILS)</u>       |        |                          |
|   | TI     | YELLOW DOUBLE CENTER     |
| <u>THERMOPLASTIC (6", 90 MILS)</u>        |        |                          |
|   | T6     | WHITE EDGELINE           |
|   | T7     | YELLOW EDGELINE          |
| <u>THERMOPLASTIC (6", 120 MILS)</u>       |        |                          |
|   | T11    | WHITE MINISKIPS (2'/8')  |
|   | T12    | YELLOW MINISKIPS (2'/8') |
|   | TJ     | 10' WHITE SKIPS          |
|   | TK     | WHITE MINISKIPS (3'/9')  |
|   | TL     | WHITE LANE LINE          |
| <u>THERMOPLASTIC (12", 90 MILS)</u>       |        |                          |
|   | TS     | WHITE GORELINE           |
|   | TU     | WHITE DIAGONAL           |
| <u>THERMOPLASTIC (24", 120 MILS)</u>      |        |                          |
|   | T2     | WHITE STOP BAR           |
| <u>THERMOPLASTIC SYMBOL (90 MILS)</u>     |        |                          |
|   | UA     | LEFT TURN ARROW          |
|   | UB     | RIGHT TURN ARROW         |
|   | UN     | 24" YIELD LINE           |
|   | UP     | MERGE ARROW              |
|   | UT     | U-TURN ARROW             |
| <u>PERMANENT RAISED PAVEMENT MARKERS</u>  |        |                          |
|   | MB     | CRYSTAL & RED            |
| <u>SNOWPLOWABLE PAVEMENT MARKERS</u>      |        |                          |
|   | ME     | YELLOW & YELLOW          |
|   | MF     | CRYSTAL & RED            |

## LEGEND

### GENERAL

- DIRECTION OF TRAFFIC FLOW
- NORTH ARROW
- PROPOSED PVMT.    EXIST. PVMT.

### PAVEMENT MARKINGS

- PAVEMENT MARKING SYMBOLS

**PAVEMENT MARKING SYMBOLS**

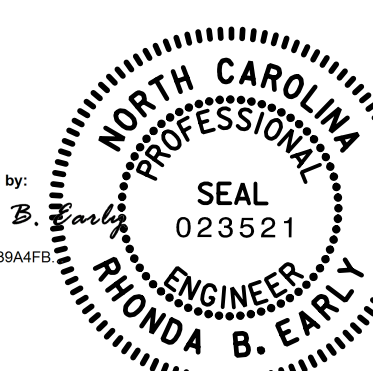
|  |    |
|--|----|
|  | UA |
|  | UB |
|  | UN |
|  | UP |
|  | UT |

SEAL

APPROVED:

DocuSigned by:  
Rhonda B. Early

DATE: 5/8/2015



## FINAL PAVEMENT MARKING PLAN