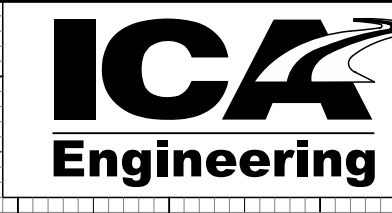
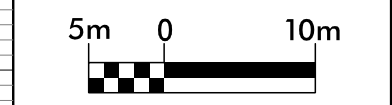
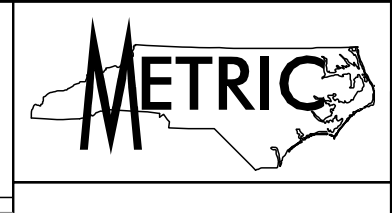


6/09/2015



5121 Kingdom Way,  
Suite 100  
Raleigh, NC 27607  
NC License No: P-0228



PROJECT REFERENCE NO. R-2413CA	SHEET NO. 13
ROADWAY DESIGN ENGINEER	HYDRAULICS ENGINEER
CONST. REV.	
R / W REV.	
4/8/2015	4/8/2015

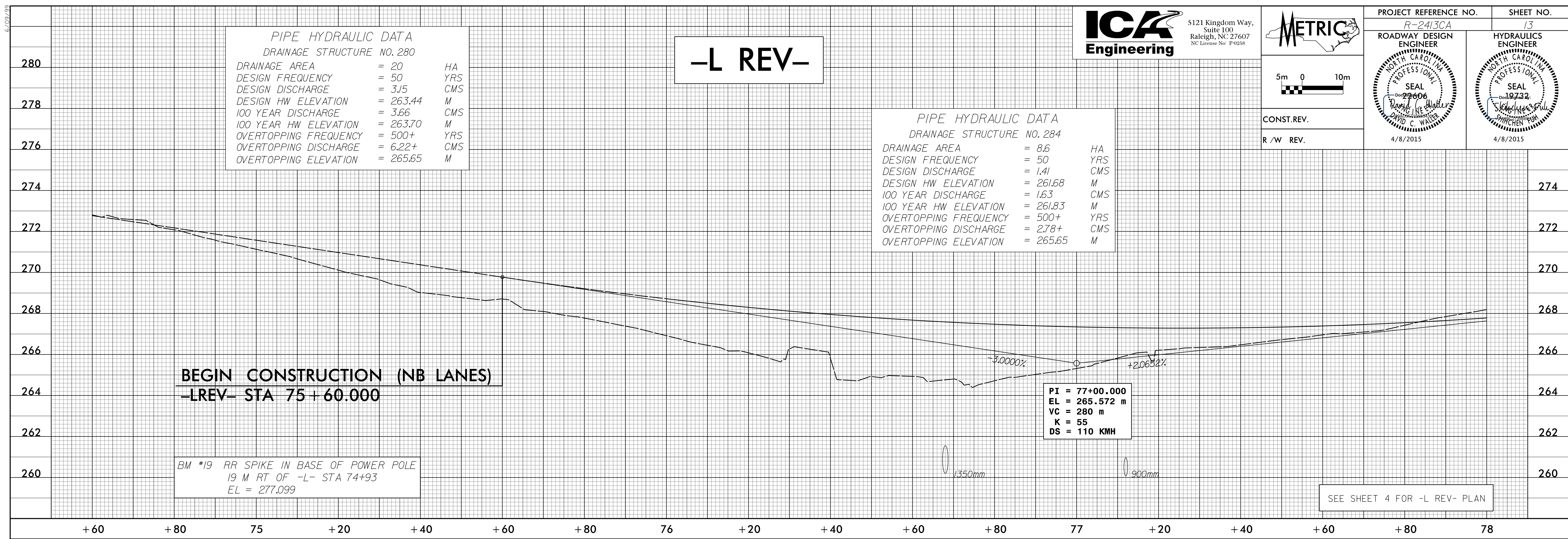
PIPE HYDRAULIC DATA  
DRAINAGE STRUCTURE NO. 280

DRAINAGE AREA	= 20	HA
DESIGN FREQUENCY	= 50	YRS
DESIGN DISCHARGE	= 3.15	CMS
DESIGN HW ELEVATION	= 263.44	M
100 YEAR DISCHARGE	= 3.66	CMS
100 YEAR HW ELEVATION	= 263.70	M
OVERTOPPING FREQUENCY	= 500+	YRS
OVERTOPPING DISCHARGE	= 6.22+	CMS
OVERTOPPING ELEVATION	= 265.65	M

-L REV-

PIPE HYDRAULIC DATA  
DRAINAGE STRUCTURE NO. 284

DRAINAGE AREA	= 8.6	HA
DESIGN FREQUENCY	= 50	YRS
DESIGN DISCHARGE	= 1.41	CMS
DESIGN HW ELEVATION	= 261.68	M
100 YEAR DISCHARGE	= 1.63	CMS
100 YEAR HW ELEVATION	= 261.83	M
OVERTOPPING FREQUENCY	= 500+	YRS
OVERTOPPING DISCHARGE	= 2.78+	CMS
OVERTOPPING ELEVATION	= 265.65	M

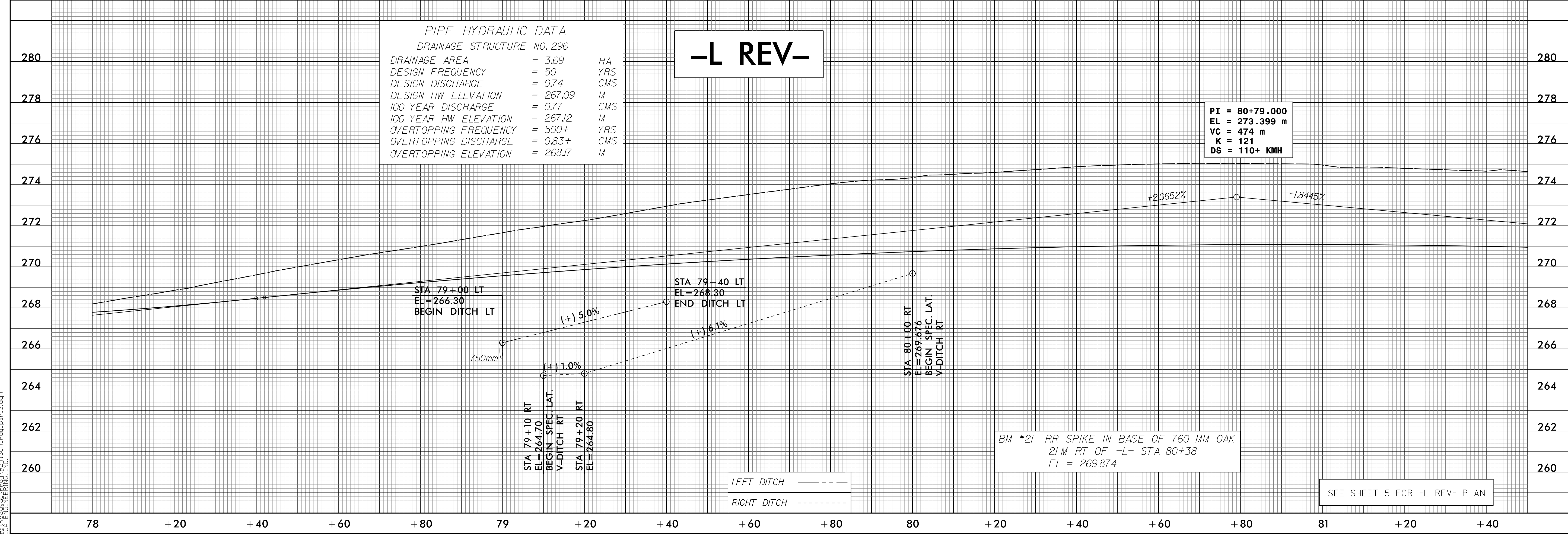


PIPE HYDRAULIC DATA  
DRAINAGE STRUCTURE NO. 296

DRAINAGE AREA	= 3.69	HA
DESIGN FREQUENCY	= 50	YRS
DESIGN DISCHARGE	= 0.74	CMS
DESIGN HW ELEVATION	= 267.09	M
100 YEAR DISCHARGE	= 0.77	CMS
100 YEAR HW ELEVATION	= 267.12	M
OVERTOPPING FREQUENCY	= 500+	YRS
OVERTOPPING DISCHARGE	= 0.83+	CMS
OVERTOPPING ELEVATION	= 268.17	M

-L REV-

PI = 80+79.000  
EL = 273.399 m  
VC = 474 m  
K = 121  
DS = 110+ KMH



4/7/2015 10:41:30 AM d:\psh13.dgn