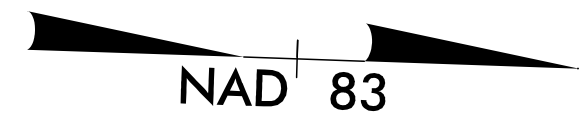


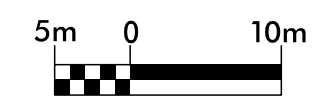
5/17/2015

-LREV_SB-

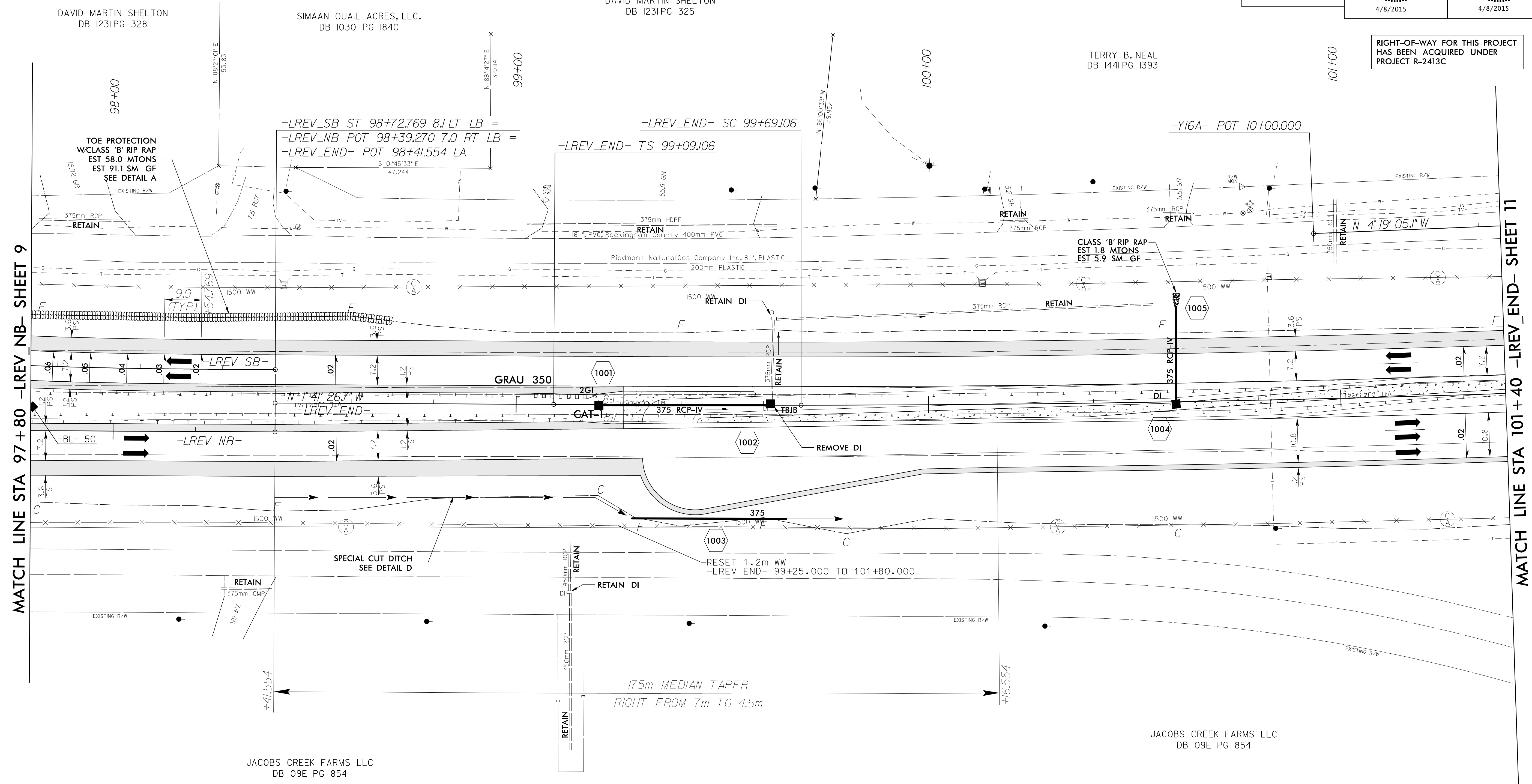
PIs Sta 96+02.477	PI Sta 97+17.024	PIs Sta 98+30.772
$\Theta_s = 2^\circ 12' 03.6''$	$\Delta = 13^\circ 01' 01.3''$ (LT)	$\Theta_s = 2^\circ 12' 03.6''$
$L_s = 63.000$	$L = 186.296$	$L_s = 63.000$
$LT = 42.003$	$T = 93.551$	$LT = 42.003$
$ST = 21.003$	$R = 820.000$	$ST = 21.003$
	$Se = 0.07$	
	$DS = 110$ KM/H	



PROJECT REFERENCE NO. R-2413CA	SHEET NO. 10
R/W SHEET NO.	
ROADWAY DESIGN ENGINEER DAVID C. WALKER SEAL 22606 4/8/2015	HYDRAULICS ENGINEER TERRY B. NEAL SEAL 19732 4/8/2015
CONST. REV.	
R/W REV.	

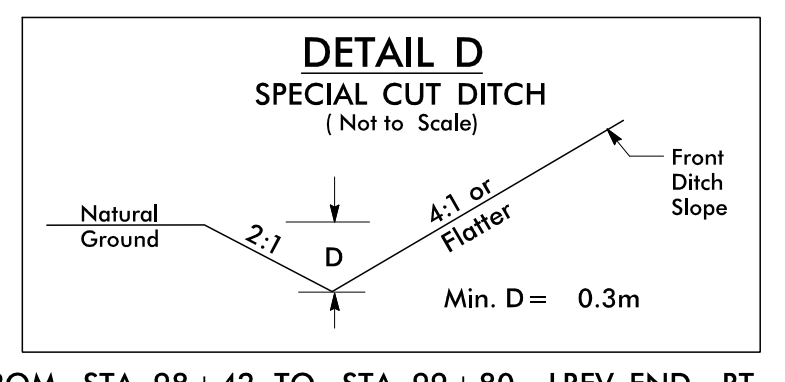
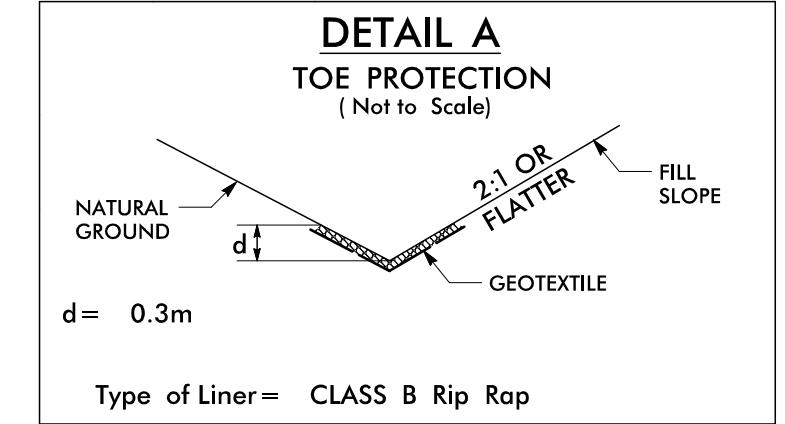


RIGHT-OF-WAY FOR THIS PROJECT HAS BEEN ACQUIRED UNDER PROJECT R-2413C



MATCH LINE STA 97+80 -LREV_NB- SHEET 9

MATCH LINE STA 101+40 -LREV_END- SHEET 11



FROM STA. 98+00 -LREV_SB- LT. TO STA. 98+70 -LREV_END LT.

FROM STA. 98+42 TO STA. 99+80 -LREV_END- RT.

-LREV_END-

PIs Sta 99+49.106	PI Sta 100+77.397	PIs Sta 102+05.658
$\Theta_s = 0^\circ 19' 21.0''$	$\Delta = 20^\circ 19' 40.3''$ (LT)	$\Theta_s = 0^\circ 19' 21.0''$
$L_s = 60.000$	$L = 216.552$	$L_s = 60.000$
$LT = 40.000$	$T = 108.291$	$LT = 40.000$
$ST = 20.000$	$R = 5,330.000$	$ST = 20.000$
	$Se = NC$	
	$DS = 110$ KM/H	

LEGEND

125mm MONOLITHIC CONCRETE ISLAND (KEYED IN)

SEE SHEET 16 FOR -LREV_NB- PROFILE
 SEE SHEET 18 FOR -LREV_SB- PROFILE
 SEE SHEET 19 FOR -LREV_END- PROFILES
 SEE SHEET 2B-1 FOR CONC. ISLAND DETAILS

4/7/2015 10:41:30 AM r-2413ca_r-dj_psh10.dgn ICA ENGINEERING, INC.