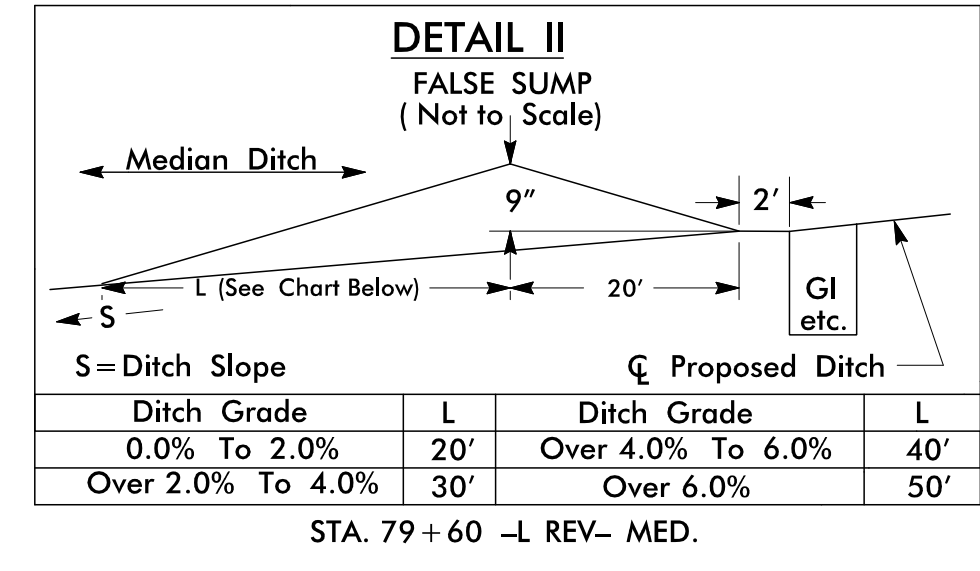


4/7/2015 10:41:30 AM C:\Users\psh05\OneDrive\Documents\Projects\2413CA_rdw_psh05.dgn

ICA Engineering
 5121 Kingdom Way,
 Suite 100
 Raleigh, NC 27607
 NC License No: P-02258

METRIC
 5m 0 10m

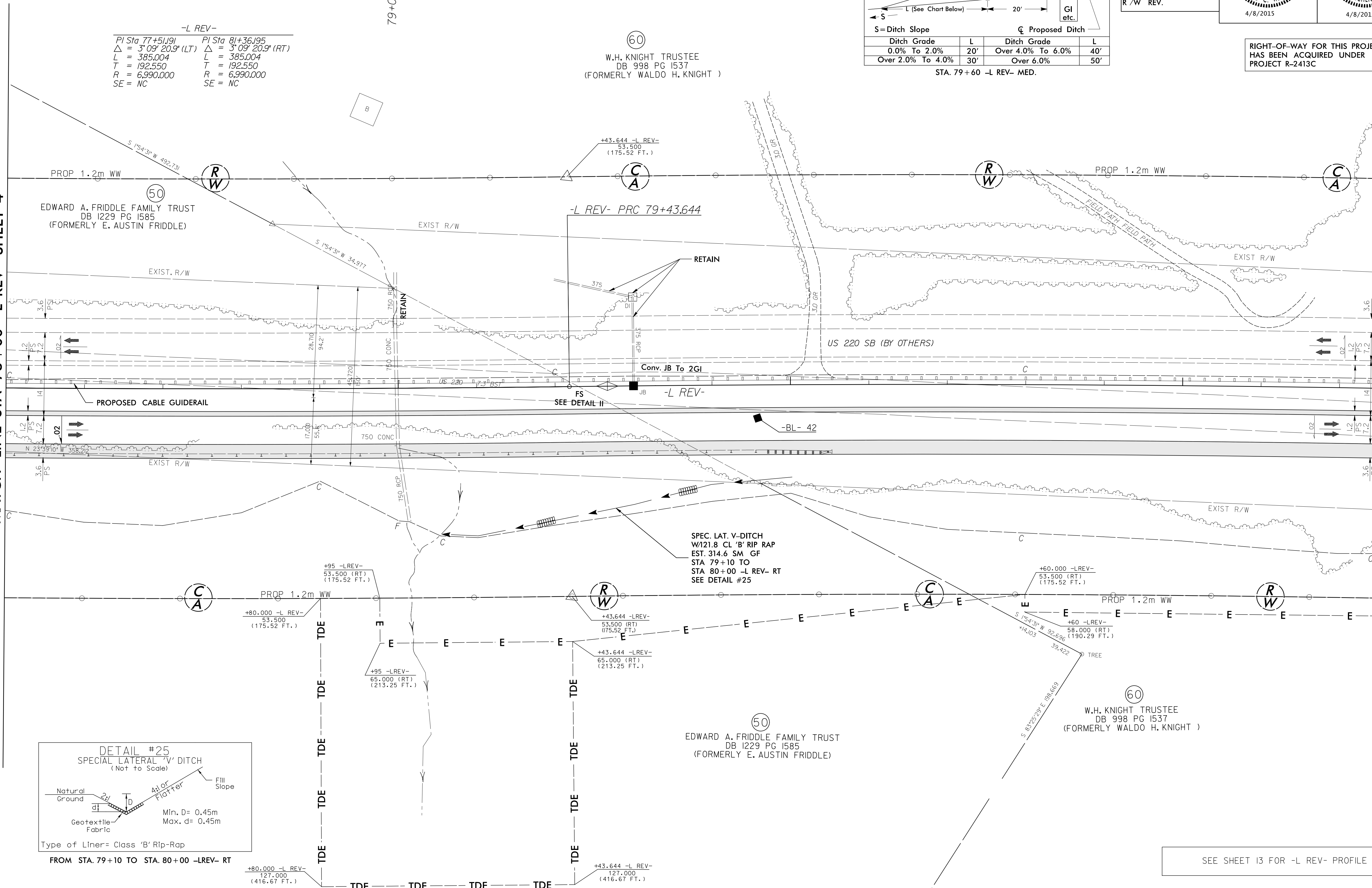
PROJECT REFERENCE NO. R-2413CA	SHEET NO. 5
R/W SHEET NO.	
ROADWAY DESIGN ENGINEER DAVID C. WALKER SEAL 22606 4/8/2015	HYDRAULICS ENGINEER S. K. FRIEDLAND SEAL 19732 4/8/2015
CONST. REV.	
R/W REV.	



RIGHT-OF-WAY FOR THIS PROJECT HAS BEEN ACQUIRED UNDER PROJECT R-2413C

MATCH LINE STA 78+00 -L REV- SHEET 4

MATCH LINE STA 81+50 -L REV- SHEET 6



-L REV-

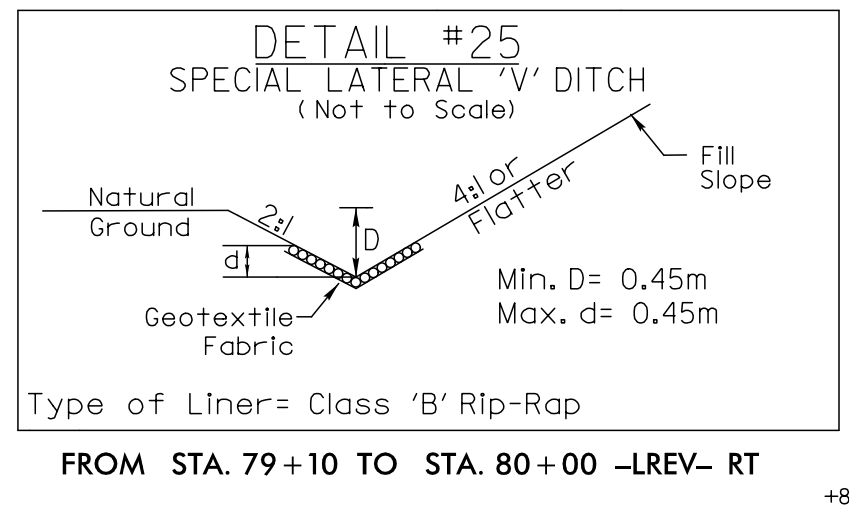
PI Sta 77+51.91	PI Sta 81+36.95
Δ = 3° 09' 20.9" (LT)	Δ = 3° 09' 20.9" (RT)
L = 385.004	L = 385.004
T = 192.550	T = 192.550
R = 6,990,000	R = 6,990,000
SE = NC	SE = NC

(60)
 W.H. KNIGHT TRUSTEE
 DB 998 PG 1537
 (FORMERLY WALDO H. KNIGHT)

(50)
 EDWARD A. FRIDDLE FAMILY TRUST
 DB 1229 PG 1585
 (FORMERLY E. AUSTIN FRIDDLE)

(50)
 EDWARD A. FRIDDLE FAMILY TRUST
 DB 1229 PG 1585
 (FORMERLY E. AUSTIN FRIDDLE)

(60)
 W.H. KNIGHT TRUSTEE
 DB 998 PG 1537
 (FORMERLY WALDO H. KNIGHT)



SEE SHEET 13 FOR -L REV- PROFILE