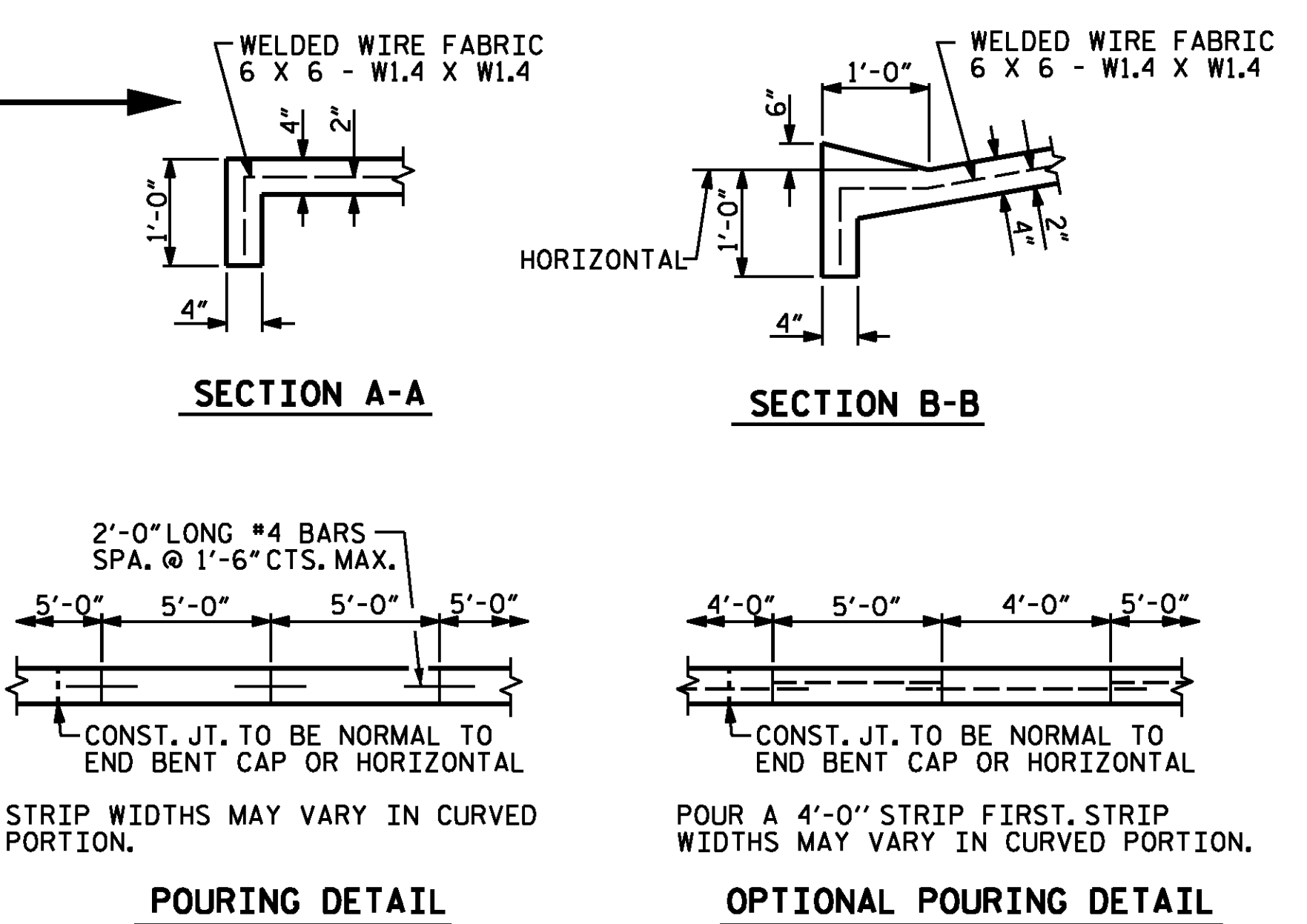


**GENERAL NOTES**

SLOPE PROTECTION SHALL BE PLACED UNDER THE ENDS OF THE BRIDGE AS SHOWN IN THE DETAILS. STRAIGHT EDGING WILL NOT BE REQUIRED UNLESS, IN THE OPINION OF THE ENGINEER, VISUAL INSPECTION INDICATES A NEED FOR IT. MEASUREMENT AND PAYMENT SHALL BE AS PRESCRIBED IN SECTION 462 OF THE STANDARD SPECIFICATIONS. FOR BERM WIDTH, SEE GENERAL DRAWING.

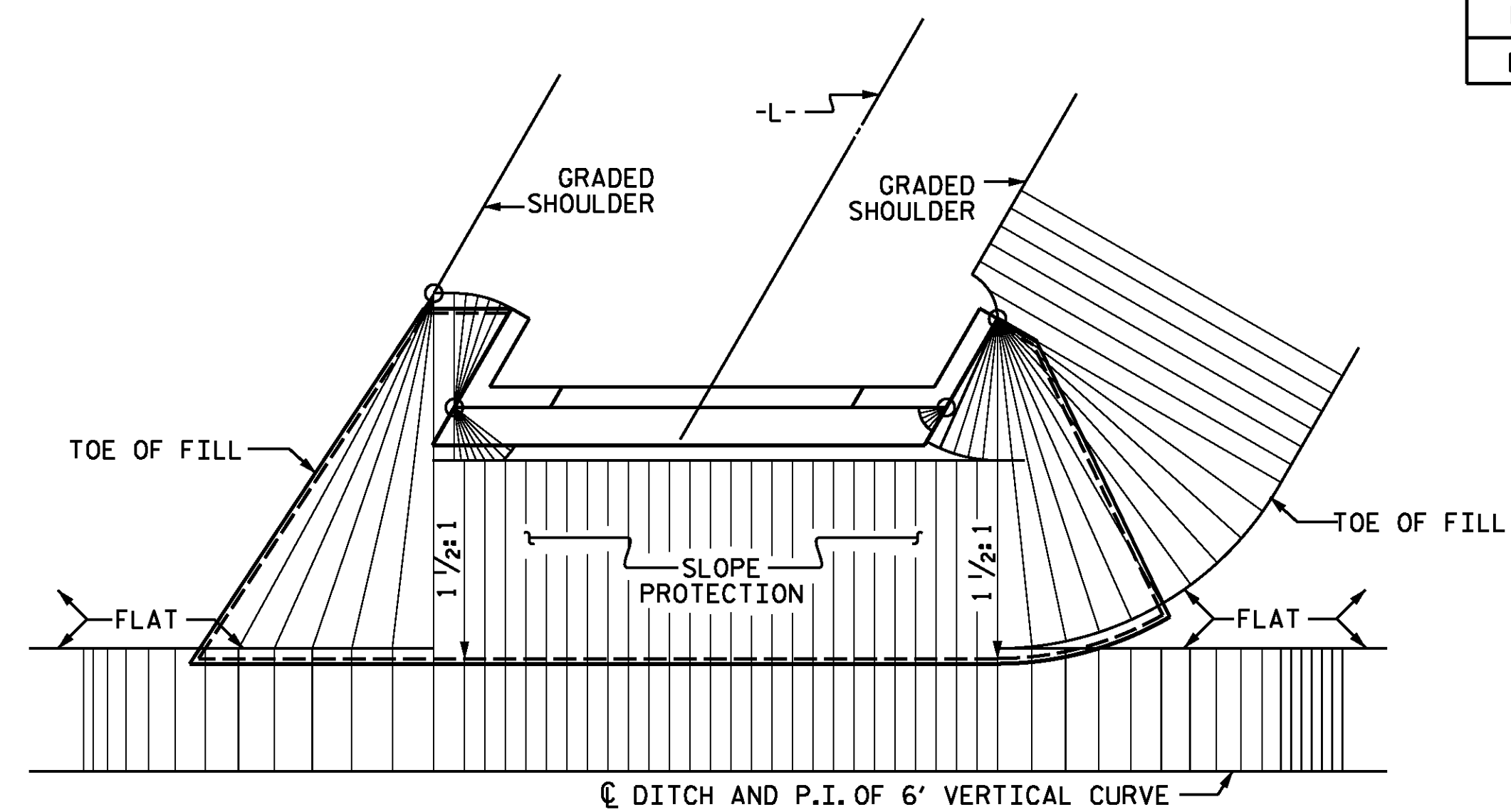
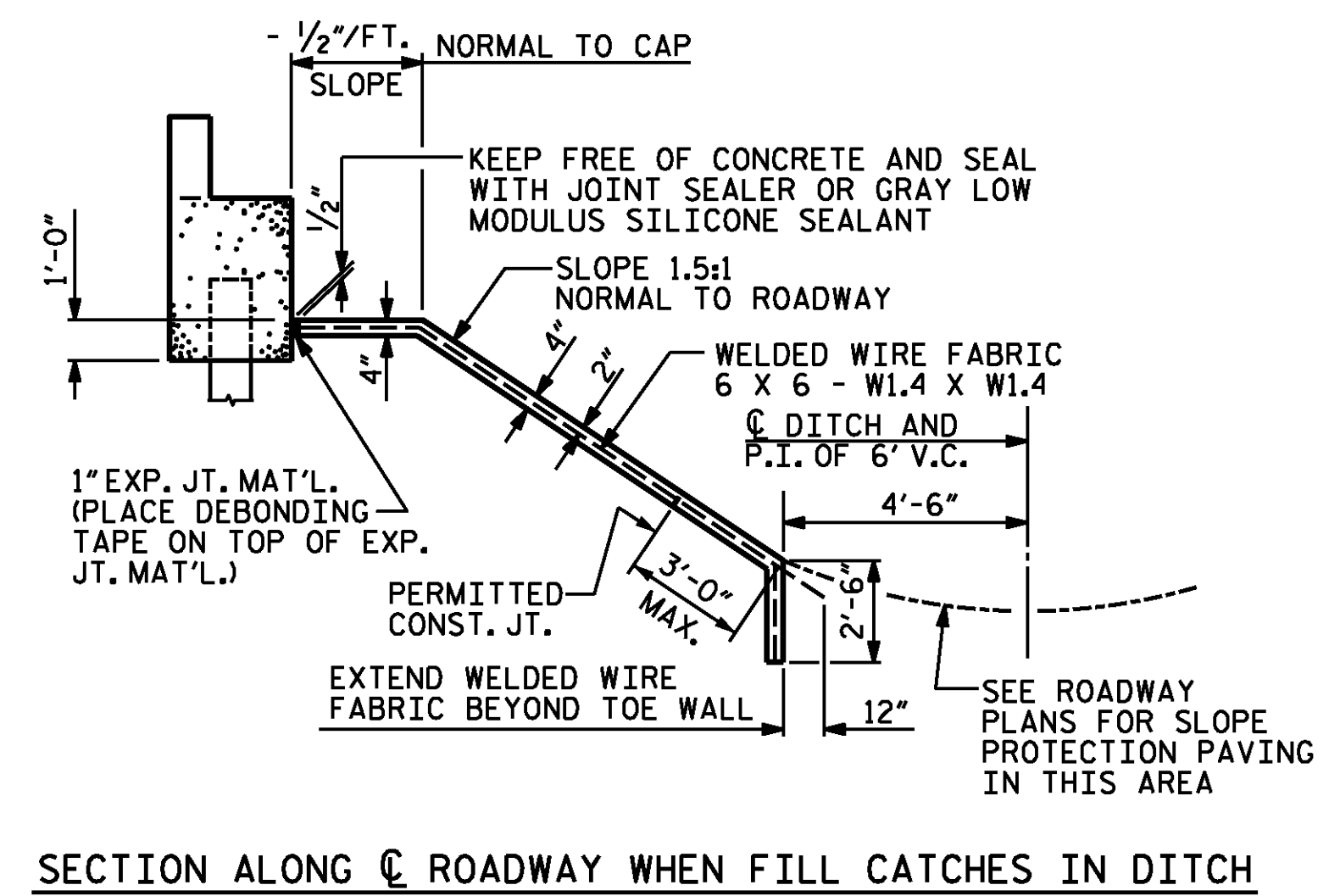
SLOPE PROTECTION SHALL CONSIST OF 4" POURED-IN-PLACE CONCRETE PAVING AS SHOWN IN THE DETAILS ON THIS SHEET. CONCRETE SHALL BE CLASS "B". THE CONCRETE SURFACE SHALL BE FLOATED WITH A WOODEN FLOAT AND FINISHED. WELDED WIRE FABRIC REINFORCING SHALL BE 6 X 6 - W1.4 X W1.4, 60" WIDE. SLOPE PROTECTION SHALL BE POURED IN 5' STRIPS AS SHOWN IN THE "POURING DETAIL" WITH 2'-0" LONG #4 BARS PLACED ALONG THE SLOPE BETWEEN STRIPS AT 1'-6" MAXIMUM SPACING. SLOPE PROTECTION MAY BE POURED IN ALTERNATE 4' AND 5' STRIPS AS SHOWN IN THE "OPTIONAL POURING DETAIL" WITH ADJACENT RUNS OF WELDED WIRE FABRIC LAPPING AT LEAST 6". THE COST OF THE WELDED WIRE FABRIC AND #4 BARS, IF USED, SHALL BE INCLUDED IN THE CONTRACT UNIT PRICE BID PER SQUARE YARD FOR SLOPE PROTECTION.



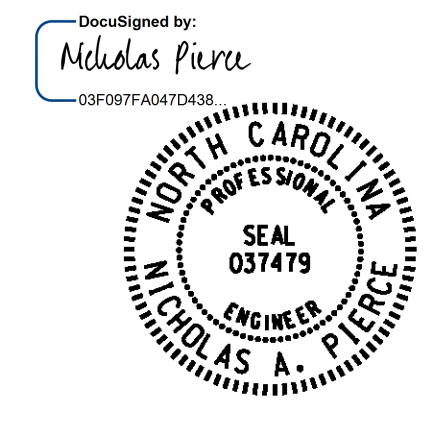
PLAN

BRIDGE @ STA. 19+99.61 -L- STA. 22+42.99 -Y4-	4" INCH SLOPE PROTECTION	* WELDED WIRE FABRIC 60 INCHES WIDE
	SQUARE YARDS	APPROX. L.F.
END BENT 1	388	623
END BENT 2	348	560

\* QUANTITY SHOWN IS BASED ON 5' POURS.



PLAN - END BENT WITH SWEEP BACK WINGS - SKEWED



PROJECT NO. B-5114  
 RANDOLPH COUNTY  
 STATION: 19+99.61 -L-

STATE OF NORTH CAROLINA  
 DEPARTMENT OF TRANSPORTATION  
 RALEIGH  
 STANDARD  
 SLOPE PROTECTION  
 DETAILS

DESIGN ENGINEER OF RECORD N.A. PIERCE	DATE 11/2014
ASSEMBLED BY : M. HOBBS CHECKED BY : N. PIERCE	DATE : 11/2014
DRAWN BY : ELR 5/92 CHECKED BY : GRP 6/92	TLA/GM MAA/GM MAA/GM

**WSP**  
 Transportation & Infrastructure  
 15401 Weston Parkway Suite 100  
 Cary, NC 27513 - 919.678.0035  
 www.wspgroup.com  
 LICENSE NO. F-0891

REVISIONS						SHEET NO. S01-34
NO.	BY:	DATE:	NO.	BY:	DATE:	
1			3			TOTAL SHEETS 36
2			4			