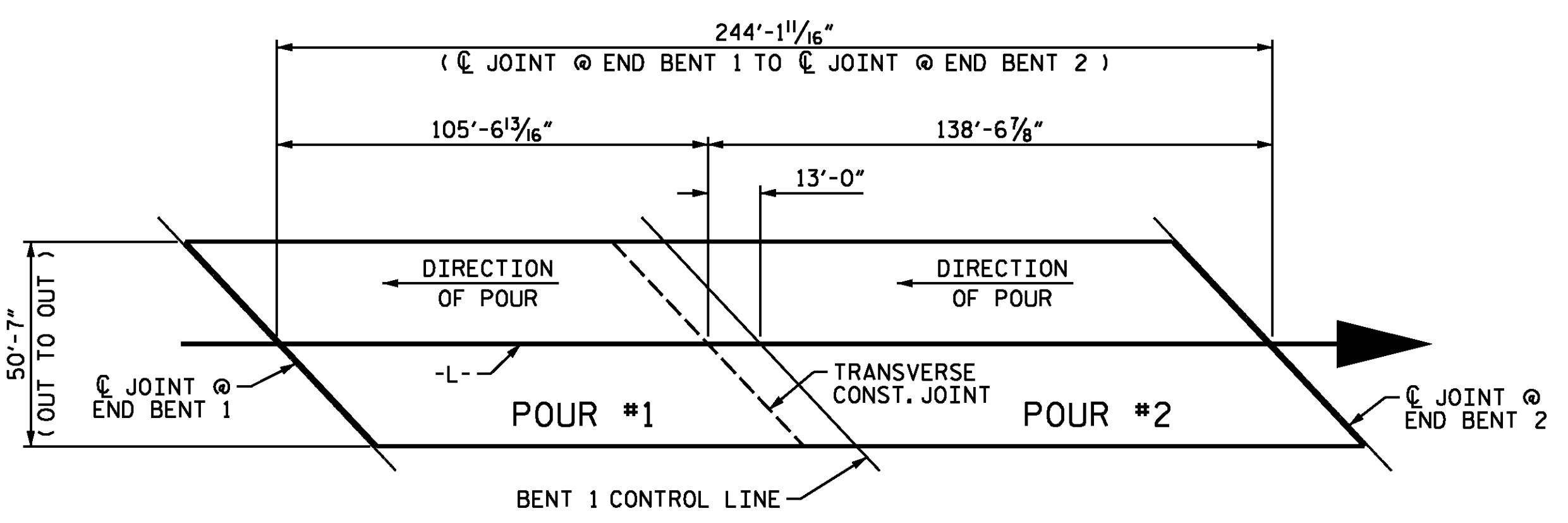
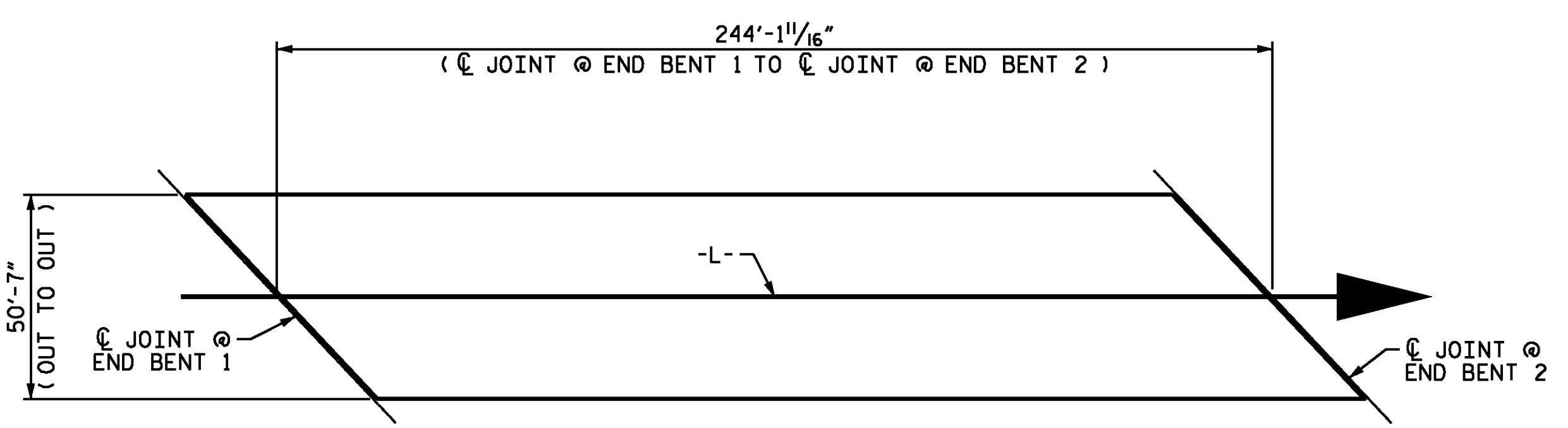


OPTIONAL POURING SEQUENCE

POUR ② CANNOT BE STARTED UNTIL BOTH ADJACENT ① POURS REACH A MINIMUM OF 3000 PSI.



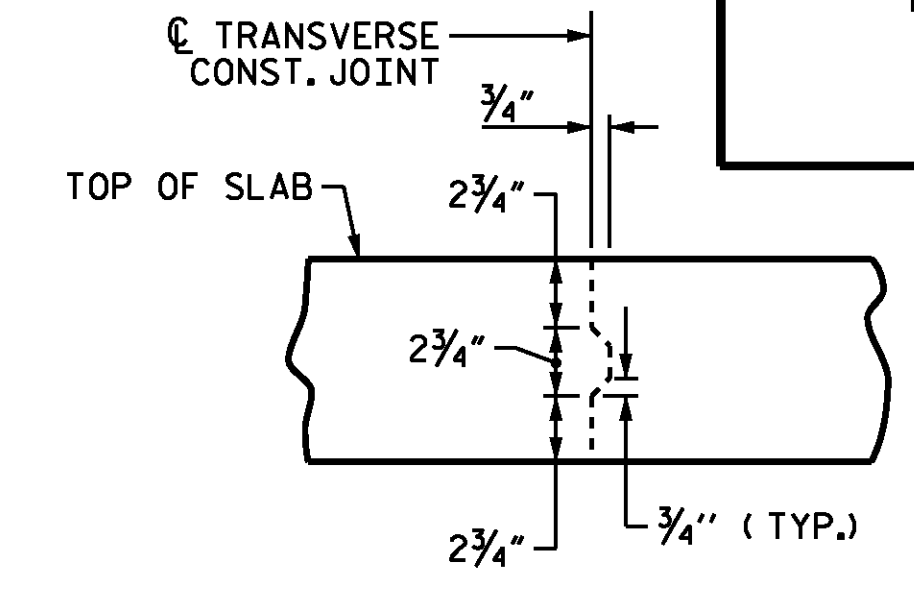
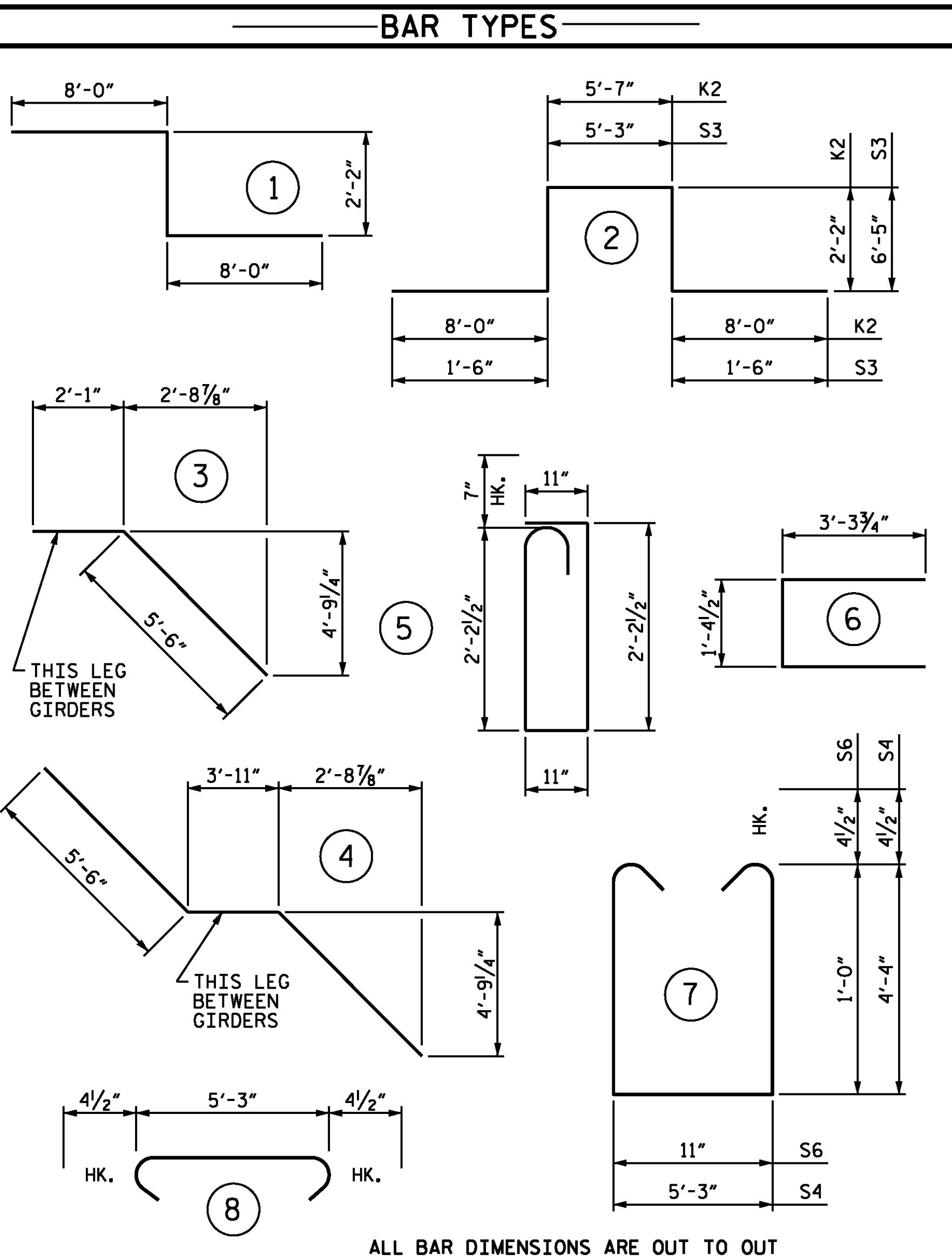
POURING SEQUENCE



LAYOUT FOR COMPUTING AREA REINFORCED CONCRETE DECK SLAB (SQ. FT. = 12,350)

GROOVING BRIDGE FLOORS	
APPROACH SLABS	2,927 SQ.FT.
BRIDGE DECK	10,964 SQ.FT.
TOTAL	13,831 SQ.FT.

BILL OF MATERIAL											
SPANS A & B											
BAR	NO.	SIZE	TYPE	LENGTH	WEIGHT	BAR	NO.	SIZE	TYPE	LENGTH	WEIGHT
*A1	337	#5	STR	50'-3"	17,662	*B1	37	#6	STR	52'-4"	2,908
A2	337	#5	STR	50'-3"	17,662	*B2	37	#6	STR	35'-0"	1,945
*A3	6	#6	STR	23'-0"	207	*B3	36	#6	STR	37'-1"	2,005
*A101	6	#5	STR	48'-7"	304	*B4	40	#4	STR	26'-2"	699
*A102	6	#5	STR	46'-9"	293	*B5	111	#4	STR	28'-5"	2,107
*A103	6	#5	STR	44'-10"	281	*B6	148	#4	STR	23'-1"	2,282
*A104	6	#5	STR	43'-0"	269	B7	190	#5	STR	50'-10"	10,074
*A105	6	#5	STR	41'-1"	257	*G1	4	#6	STR	36'-3"	218
*A106	6	#5	STR	39'-3"	246						
*A107	6	#5	STR	37'-5"	234	*K1	8	#8	1	18'-2"	388
*A108	6	#5	STR	35'-6"	222	*K2	16	#8	2	25'-11"	1,107
*A109	6	#5	STR	33'-8"	211	K3	30	#6	STR	10'-2"	458
*A110	6	#5	STR	31'-10"	199	K4	10	#4	STR	6'-11"	46
*A111	6	#5	STR	29'-11"	187	K5	50	#4	STR	10'-4"	345
*A112	6	#5	STR	28'-1"	176	K6	10	#4	STR	6'-3"	42
*A113	6	#5	STR	26'-2"	164	K7	14	#4	3	7'-7"	71
*A114	6	#5	STR	24'-4"	152	K8	28	#4	4	14'-11"	279
*A115	6	#5	STR	22'-6"	141	K9	20	#4	STR	10'-2"	136
*A116	6	#5	STR	20'-7"	129						
*A117	6	#5	STR	18'-9"	117	*S1	60	#5	5	6'-10"	428
*A118	6	#5	STR	16'-11"	106	*S2	60	#5	6	8'-0"	501
*A119	6	#5	STR	15'-0"	94	S3	30	#4	2	21'-1"	423
*A120	6	#5	STR	13'-2"	82	S4	10	#4	7	14'-8"	98
*A121	6	#5	STR	11'-4"	71	S5	210	#4	8	6'-0"	842
*A122	6	#5	STR	9'-5"	59	S6	40	#4	8	3'-8"	34,688
*A123	6	#5	STR	7'-7"	47						
*A124	6	#5	STR	5'-9"	36	REINFORCING STEEL		LBS.	34,688		
*A125	6	#5	STR	3'-10"	24	* EPOXY COATED					
*A126	6	#5	STR	2'-0"	13	REINFORCING STEEL		LBS.	36,571		
A201	6	#5	STR	48'-7"	304						
A202	6	#5	STR	46'-9"	293						
A203	6	#5	STR	44'-10"	281						
A204	6	#5	STR	43'-0"	269						
A205	6	#5	STR	41'-1"	257						
A206	6	#5	STR	39'-3"	246						
A207	6	#5	STR	37'-5"	234						
A208	6	#5	STR	35'-6"	222						
A209	6	#5	STR	33'-8"	211						
A210	6	#5	STR	31'-10"	199						
A211	6	#5	STR	29'-11"	187						
A212	6	#5	STR	28'-1"	176						
A213	6	#5	STR	26'-2"	164						
A214	6	#5	STR	24'-4"	152						
A215	6	#5	STR	22'-6"	141						
A216	6	#5	STR	20'-7"	129						
A217	6	#5	STR	18'-9"	117						
A218	6	#5	STR	16'-11"	106						
A219	6	#5	STR	15'-0"	94						
A220	6	#5	STR	13'-2"	82						
A221	6	#5	STR	11'-4"	71						
A222	6	#5	STR	9'-5"	59						
A223	6	#5	STR	7'-7"	47						
A224	6	#5	STR	5'-9"	36						
A225	6	#5	STR	3'-10"	24						
A226	6	#5	STR	2'-0"	13						



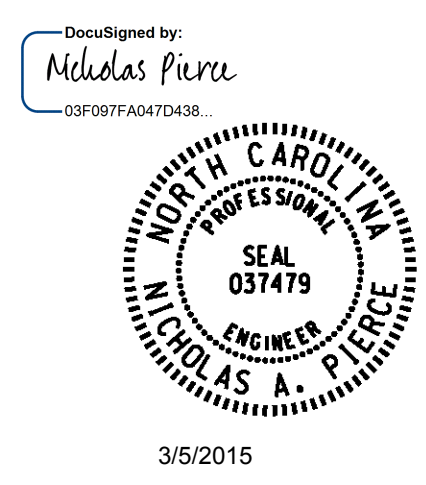
TRANSVERSE CONSTRUCTION JOINT DETAIL

NOTE: REINFORCING STEEL IN SLAB NOT SHOWN. LONGITUDINAL REINFORCING STEEL SHALL BE CONTINUOUS THRU JOINT

SUPERSTRUCTURE BILL OF MATERIAL			
	CLASS AA CONCRETE	REINFORCING STEEL	EPOXY COATED REINFORCING STEEL
	(CU. YDS.)	(LBS.)	(LBS.)
POUR #1	180.0	34,688	36,571
POUR #2	284.0		
TOTALS**	464.0	34,688	36,571

** QUANTITIES FOR CONCRETE PARAPET AND END RAILS ARE NOT INCLUDED

SUPERSTRUCTURE REINFORCING STEEL LENGTHS ARE BASED ON THE FOLLOWING MINIMUM SPLICE LENGTHS					
BAR SIZE	SUPERSTRUCTURE EXCEPT APPROACH SLABS, PARAPET, AND BARRIER RAIL		APPROACH SLABS		PARAPET AND BARRIER RAIL
	EPOXY COATED	UNCOATED	EPOXY COATED	UNCOATED	
#4	2'-0"	1'-9"	2'-0"	1'-9"	2'-9"
#5	2'-6"	2'-2"	2'-6"	2'-2"	3'-5"
#6	3'-0"	2'-7"	3'-10"	2'-7"	4'-4"
#7	5'-3"	3'-6"			
#8	6'-10"	4'-7"			



PROJECT NO. B-5114
 RANDOLPH COUNTY
 STATION: 19+99.61 -L-

STATE OF NORTH CAROLINA
 DEPARTMENT OF TRANSPORTATION
 RALEIGH
 STANDARD
 SUPERSTRUCTURE
 BILL OF MATERIAL

REVISIONS						SHEET NO. S01-25
NO.	BY:	DATE:	NO.	BY:	DATE:	
1			3			TOTAL SHEETS 36
2			4			

DESIGN ENGINEER OF RECORD N.A. PIERCE	DATE 12/2014
ASSEMBLED BY : M.J. OSTRISHKO	DATE : 07/2014
CHECKED BY : N.A. PIERCE	DATE : 12/2014
DRAWN BY : JMB 5/87	REV. 8/16/99 RWW/LES
CHECKED BY : SJD 9/87	REV. 5/1/06 TLA/GM
	REV. 10/1/11 MAA/GM