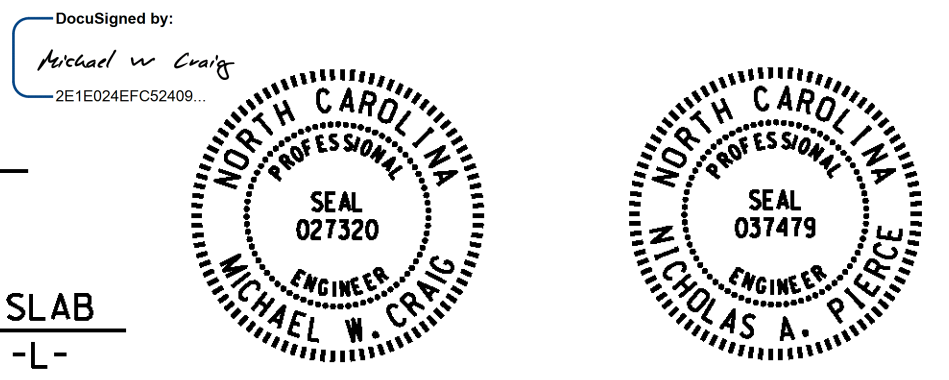


\* TEMPORARY SHORING FOR MAINTENANCE OF TRAFFIC, SEE ROADWAY PLANS.



DocuSigned by: Nicholas A. Pierce 03/07/2015 10:43:38 AM

PROJECT NO. B-5114  
 RANDOLPH COUNTY  
 STATION: 19+99.61 -L-  
 22+42.99 -Y4-  
 SHEET 1 OF 3 REPLACES BRIDGE No. 136

STATE OF NORTH CAROLINA  
 DEPARTMENT OF TRANSPORTATION  
 RALEIGH

GENERAL DRAWING  
 FOR BRIDGE ON SR 1619  
 OVER US 29/70/  
 (BUS 85) BETWEEN  
 SR 1663 AND SR 1621

DESIGN ENGINEER OF RECORD: N.A. PIERCE, DATE: 12/2014  
 DRAWN BY: M.J. OSTRISHKO, DATE: 12/2014  
 CHECKED BY: N.A. PIERCE, DATE: 12/2014

**WSP**  
 Transportation & Infrastructure  
 15401 Weston Parkway Suite 100  
 Cary, NC 27513 - 919.678.0035  
 www.wspgroup.com  
 LICENSE NO. F-0891

REVISIONS						SHEET NO. S01-1
NO.	BY:	DATE:	NO.	BY:	DATE:	
1			3			TOTAL SHEETS 36
2			4			