

PROJECT REFERENCE NO.	SHEET NO.
B-5114	UC-4
DESIGNED BY: JH	
DRAWN BY: JH	
CHECKED BY: JSM	
APPROVED BY: JSM	
REVISED:	
NORTH CAROLINA DEPARTMENT OF TRANSPORTATION UTILITIES ENGINEERING SECTION PHONE: (919) 707-6690 FAX: (919) 250-4151	
UTILITY CONSTRUCTION PLANS ONLY	

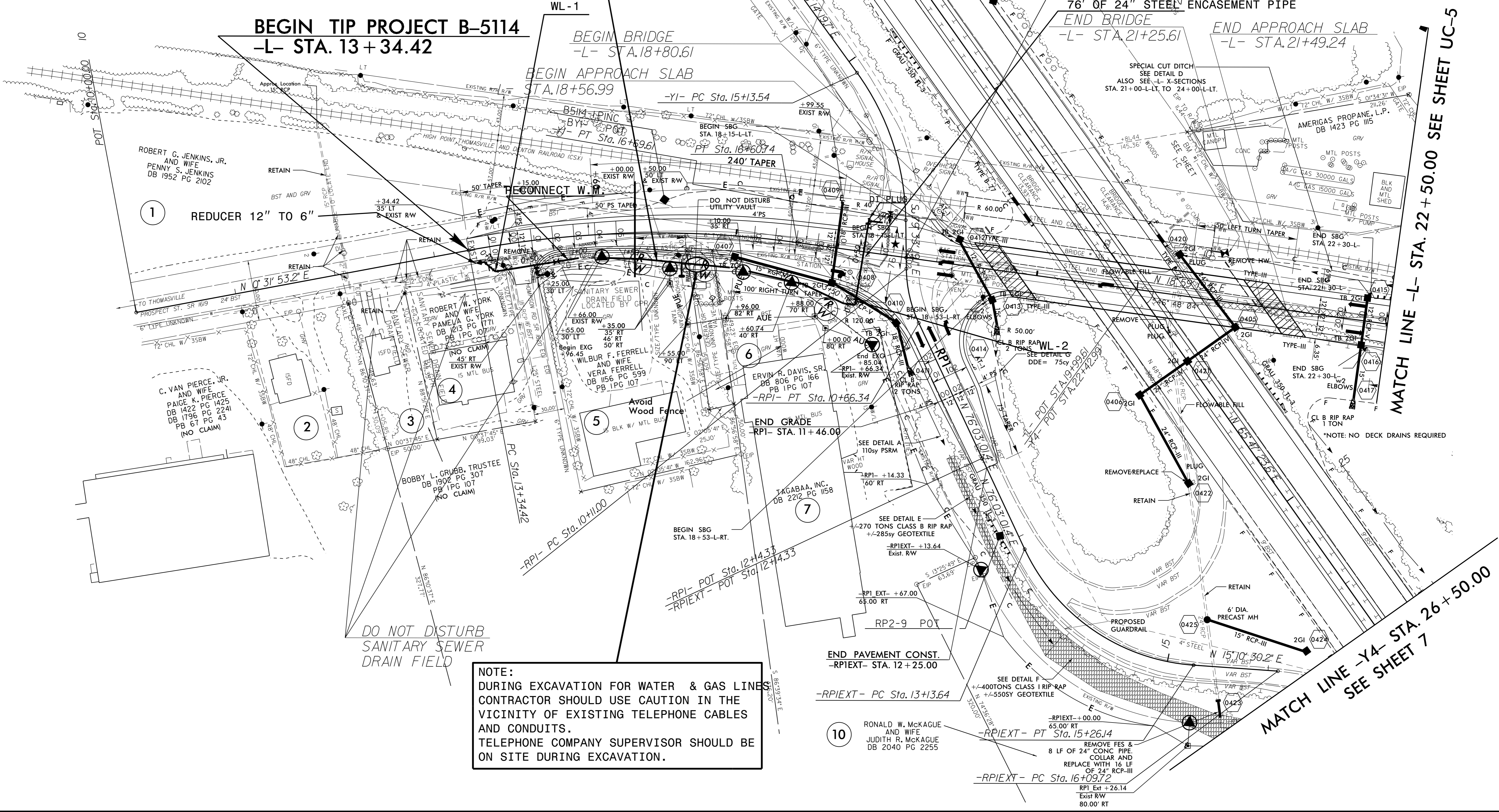
PROP. 492' OF 12" WATER LINE.
 1- WATER METER RELOCATION.
 1- FIRE HYDRANT RELOCATION.
 2- RECONNECT WATER METER.
 1- 6" GATE VALVE.
 2- 12" GATE VALVE.
 76' OF 24" STEEL ENCASEMENT.

BEGIN TIP PROJECT B-5114
 -L- STA. 13+34.42

MATCH LINE -Y4- 17+00.00
 SEE SHEET 6

-L- POT Sta. 17+69.61
 -RPI- POT Sta. 10+00.00
 -YI- POT Sta. 17+06.71

76' OF 24" STEEL ENCASEMENT PIPE
 END BRIDGE -L- STA. 21+25.61
 END APPROACH SLAB -L- STA. 21+49.24



ROBERT G. JENKINS, JR. AND WIFE
 PENNY S. JENKINS
 DB 1952 PG 2102

REDUCER 12" TO 6"

C. VAN PIERCE, JR. AND WIFE
 PAIGE K. PIERCE
 DB 1422 PG 1425
 DB 1796 PG 2241
 PB 6T PG 43
 (NO CLAIM)

BOBBY L. GRUBB, TRUSTEE
 DB 1902 PG 307
 PB 1PG 107
 (NO CLAIM)

WILBUR F. FERRELL AND WIFE
 VERA FERRELL
 DB 1156 PG 599
 PB 1PG 107

ERVIN R. DAVIS, SR.
 DB 806 PG 166
 PB 1PG 107

TAGABAA, INC.
 DB 2212 PG 1158

RONALD W. MCKAGUE AND WIFE
 JUDITH R. MCKAGUE
 DB 2040 PG 2255

NOTE:
 DURING EXCAVATION FOR WATER & GAS LINES CONTRACTOR SHOULD USE CAUTION IN THE VICINITY OF EXISTING TELEPHONE CABLES AND CONDUITS. TELEPHONE COMPANY SUPERVISOR SHOULD BE ON SITE DURING EXCAVATION.

DO NOT DISTURB SANITARY SEWER DRAIN FIELD

SPECIAL CUT DITCH
 SEE DETAIL D
 ALSO SEE -L- X-SECTIONS
 STA. 21+00-LT. TO 24+00-LT.

AMERICAS PROPANE, L.P.
 DB 1423 PG 115

MATCH LINE -L- STA. 22+50.00 SEE SHEET UC-5

MATCH LINE -Y4- STA. 26+50.00
 SEE SHEET 7

5/14/99

27-FEB-2015 11:53
 es:\E\3456789\B5114-ut-rdy4_UC04_psh.dgn