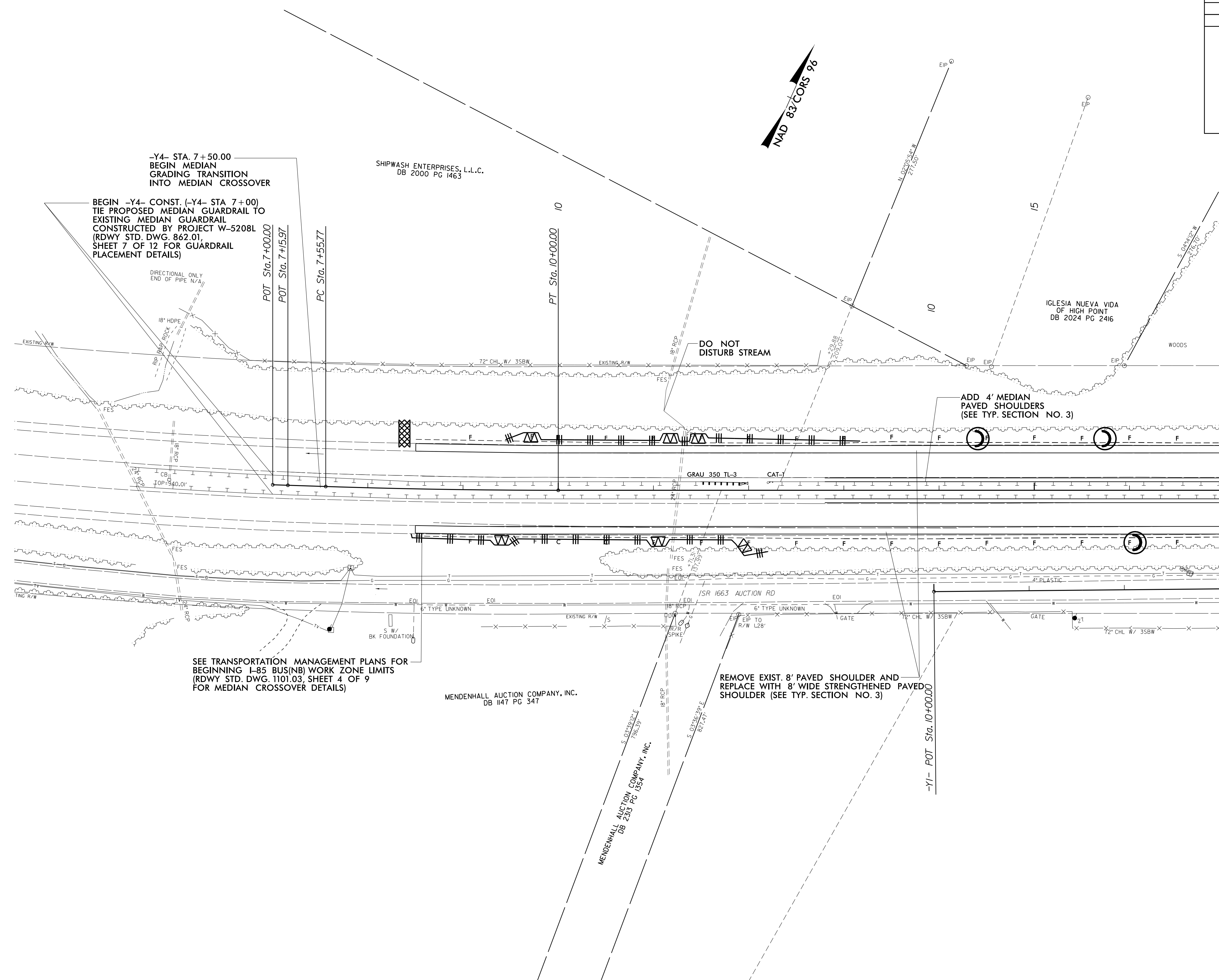


| | |
|-------------------------|---------------------|
| PROJECT REFERENCE NO. | SHEET NO. |
| B-5114 | EC-10/CONST.6 |
| RW SHEET NO. | |
| ROADWAY DESIGN ENGINEER | HYDRAULICS ENGINEER |

8/17/99



-Y4- STA. 7+50.00
 BEGIN MEDIAN
 GRADING TRANSITION
 INTO MEDIAN CROSSOVER

BEGIN -Y4- CONST. (-Y4- STA 7+00)
 TIE PROPOSED MEDIAN GUARDRAIL TO
 EXISTING MEDIAN GUARDRAIL
 CONSTRUCTED BY PROJECT W-5208L
 (RDWY STD. DWG. 862.01,
 SHEET 7 OF 12 FOR GUARDRAIL
 PLACEMENT DETAILS)

POT Sta. 7+00.00
 POT Sta. 7+15.97
 PC Sta. 7+55.77

PT Sta. 10+00.00

NAD 83 CORRS 9%

SHIPWASH ENTERPRISES, L.L.C.
 DB 2000 PG 1463

IGLESIA NUEVA VIDA
 OF HIGH POINT
 DB 2024 PG 2416

DO NOT
 DISTURB STREAM

ADD 4' MEDIAN
 PAVED SHOULDERS
 (SEE TYP. SECTION NO. 3)

SEE TRANSPORTATION MANAGEMENT PLANS FOR
 BEGINNING I-85 BUS(NB) WORK ZONE LIMITS
 (RDWY STD. DWG. 1101.03, SHEET 4 OF 9
 FOR MEDIAN CROSSOVER DETAILS)

MENDENHALL AUCTION COMPANY, INC.
 DB 1147 PG 347

REMOVE EXIST. 8' PAVED SHOULDER AND
 REPLACE WITH 8' WIDE STRENGTHENED PAVED
 SHOULDER (SEE TYP. SECTION NO. 3)

MENDENHALL AUCTION COMPANY, INC.
 DB 2313 PG 1354

-Y1- POT Sta. 10+00.00

MATCH LINE -Y4- 17+00.00 SEE SHEET 4

23-FEB-2015 13:57
 R:\Projects\2015\10114-EC.pst\6.dgn
 REVISION 1