

5/28/99

PROJECT REFERENCE NO. B-5114	SHEET NO. 8
ROADWAY DESIGN ENGINEER NORTH CAROLINA PROFESSIONAL SEAL 014571 James A. Spurr 4/14/2015	HYDRAULICS ENGINEER NORTH CAROLINA PROFESSIONAL SEAL 019775 Ray D. Lovingsood 4/13/2015

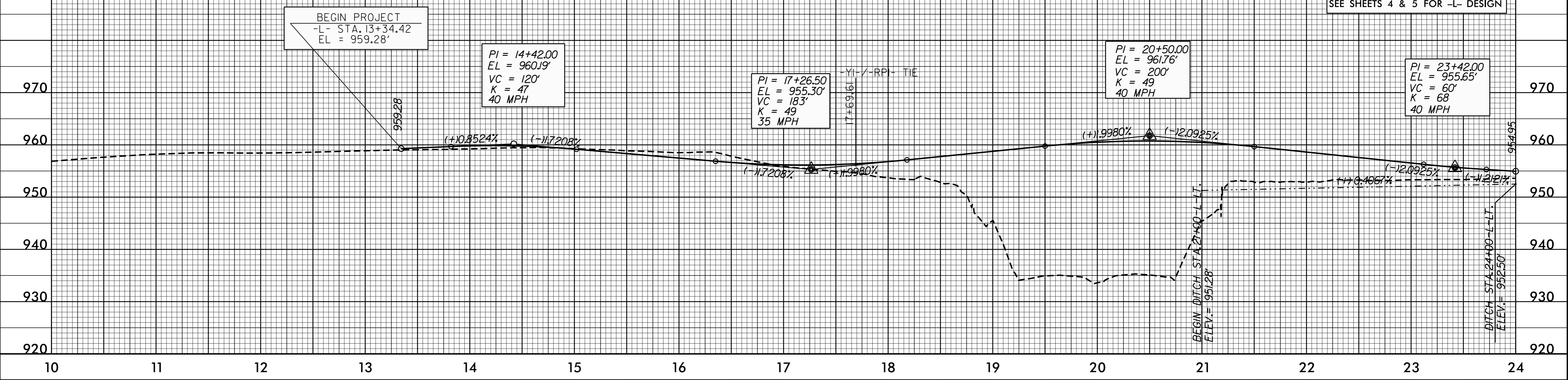
BM#1CHISLED SQUARE IN NORTH EAST CORNER OF NORTH EAST WING WALL OF HIGH POINT, THOMASVILLE AND DENTON RAILROAD BRIDGE OVER US 290 (BUS I-85) N 789930 E 1694932 ELVE. 953.65'

DITCH LEGEND

RIGHT DITCH	-----
LEFT DITCH	-----

-L-

SEE SHEETS 4 & 5 FOR -L- DESIGN

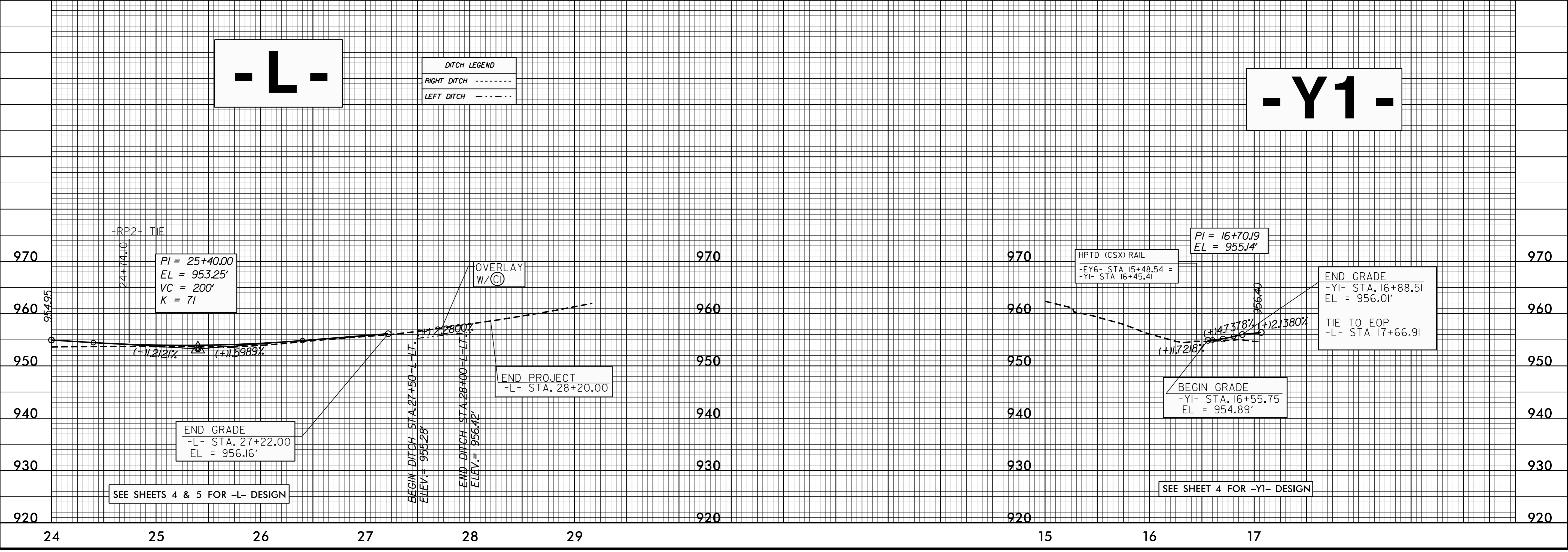


-L-

DITCH LEGEND

RIGHT DITCH	-----
LEFT DITCH	-----

-Y1-



SEE SHEETS 4 & 5 FOR -L- DESIGN

SEE SHEET 4 FOR -Y1- DESIGN

13-APR-2015 10:00
B:\114_Rdy-pl.dgn
JAS:RDM:WFE:888