

CAROLINA THOMAS DEVELOPMENT, LLC
DB 2290 PG 2012

MATCH LINE -Y4- 17+00.00
SEE SHEET 6

-L- POT Sta. 17+69.61
-RPI- POT Sta. 10+00.00
-YI- POT Sta. 17+06.71

SEE SHEETS 8 & 9 FOR PROFILES

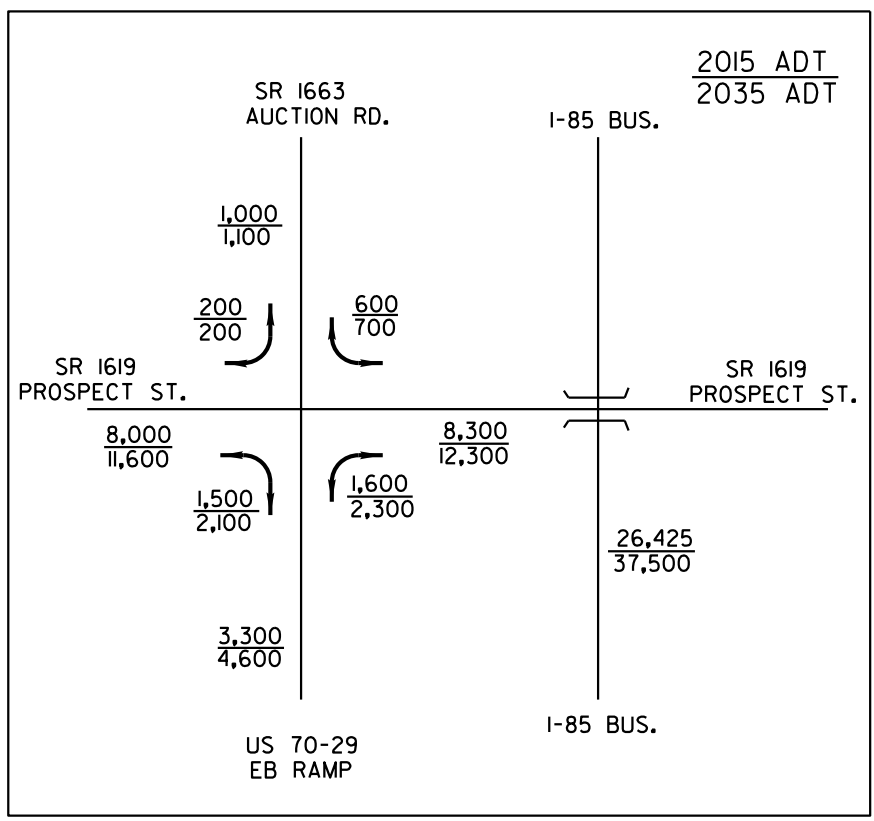
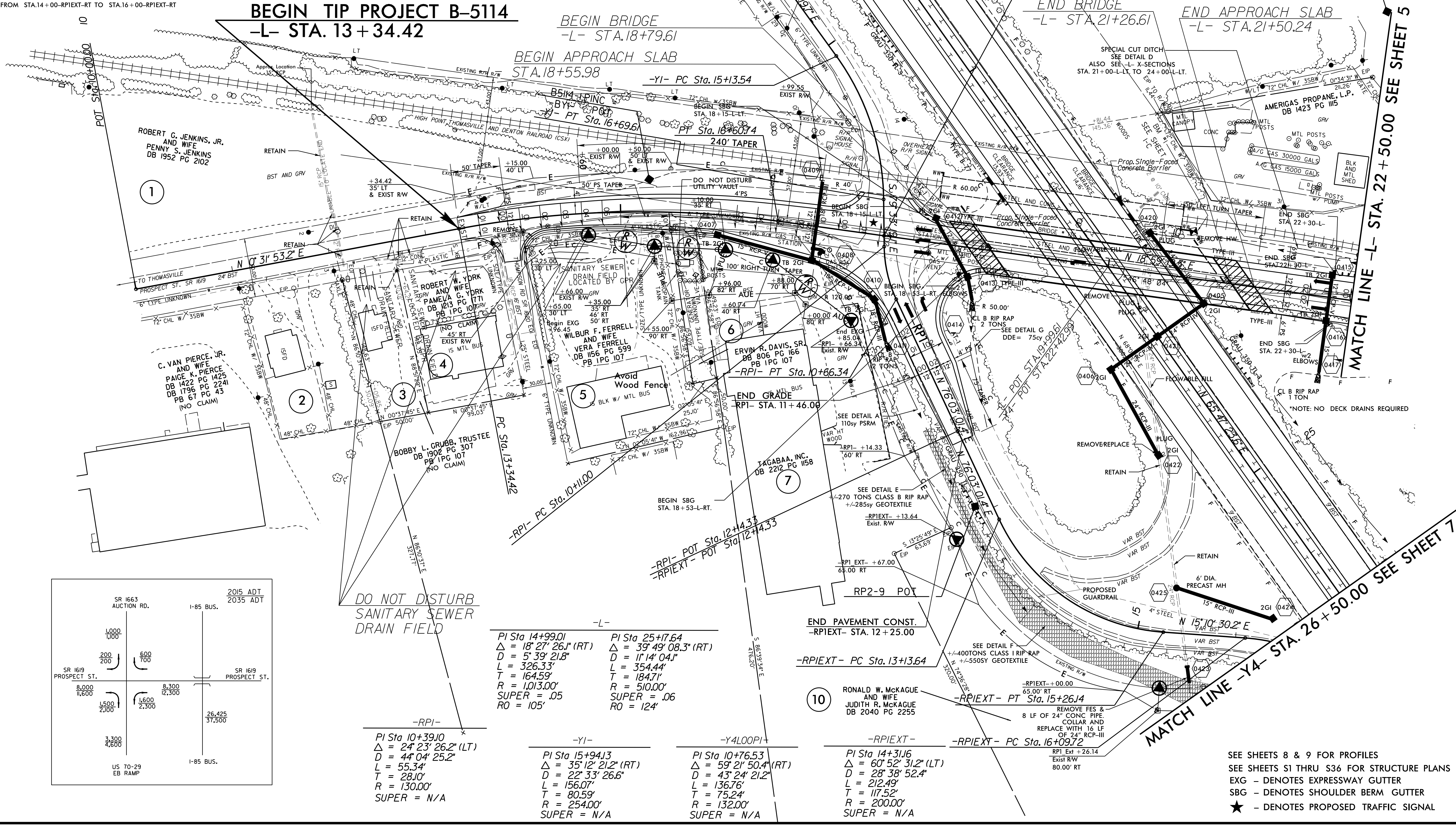
BEGIN TIP PROJECT B-5114
-L- STA. 13+34.42

BEGIN BRIDGE
-L- STA. 18+79.61

BEGIN APPROACH SLAB
STA. 18+55.98

END BRIDGE
-L- STA. 21+26.61

END APPROACH SLAB
-L- STA. 21+50.24



DO NOT DISTURB
SANITARY SEWER
DRAIN FIELD

-L-
PI Sta 14+99.01
 $\Delta = 18' 27' 26.1''$ (RT)
 $D = 5' 39' 21.8''$
 $L = 326.33'$
 $T = 164.59'$
 $R = 1,013.00'$
SUPER = .05
RO = 105'

PI Sta 25+17.64
 $\Delta = 39' 49' 08.3''$ (RT)
 $D = 1' 14' 04.1''$
 $L = 354.44'$
 $T = 184.71'$
 $R = 510.00'$
SUPER = .06
RO = 124'

-RPI-
PI Sta 10+39.10
 $\Delta = 24' 23' 26.2''$ (LT)
 $D = 4' 04' 25.2''$
 $L = 55.34'$
 $T = 28.10'$
 $R = 130.00'$
SUPER = N/A

-YI-
PI Sta 15+94.13
 $\Delta = 35' 12' 21.2''$ (RT)
 $D = 22' 33' 26.6''$
 $L = 156.07'$
 $T = 80.59'$
 $R = 254.00'$
SUPER = N/A

-Y4 LOOP I-
PI Sta 10+76.53
 $\Delta = 59' 21' 50.4''$ (RT)
 $D = 43' 24' 21.2''$
 $L = 136.76'$
 $T = 75.24'$
 $R = 132.00'$
SUPER = N/A

-RPIEXT-
PI Sta 14+31.16
 $\Delta = 60' 52' 31.2''$ (LT)
 $D = 28' 38' 52.4''$
 $L = 212.49'$
 $T = 117.52'$
 $R = 200.00'$
SUPER = N/A

SEE SHEETS 8 & 9 FOR PROFILES
SEE SHEETS S1 THRU S36 FOR STRUCTURE PLANS
EXG - DENOTES EXPRESSWAY GUTTER
SBG - DENOTES SHOULDER BERM GUTTER
★ - DENOTES PROPOSED TRAFFIC SIGNAL

B/17/99

B:\APR-2015\10-03\B5114_Rdw-bsh4.dgn