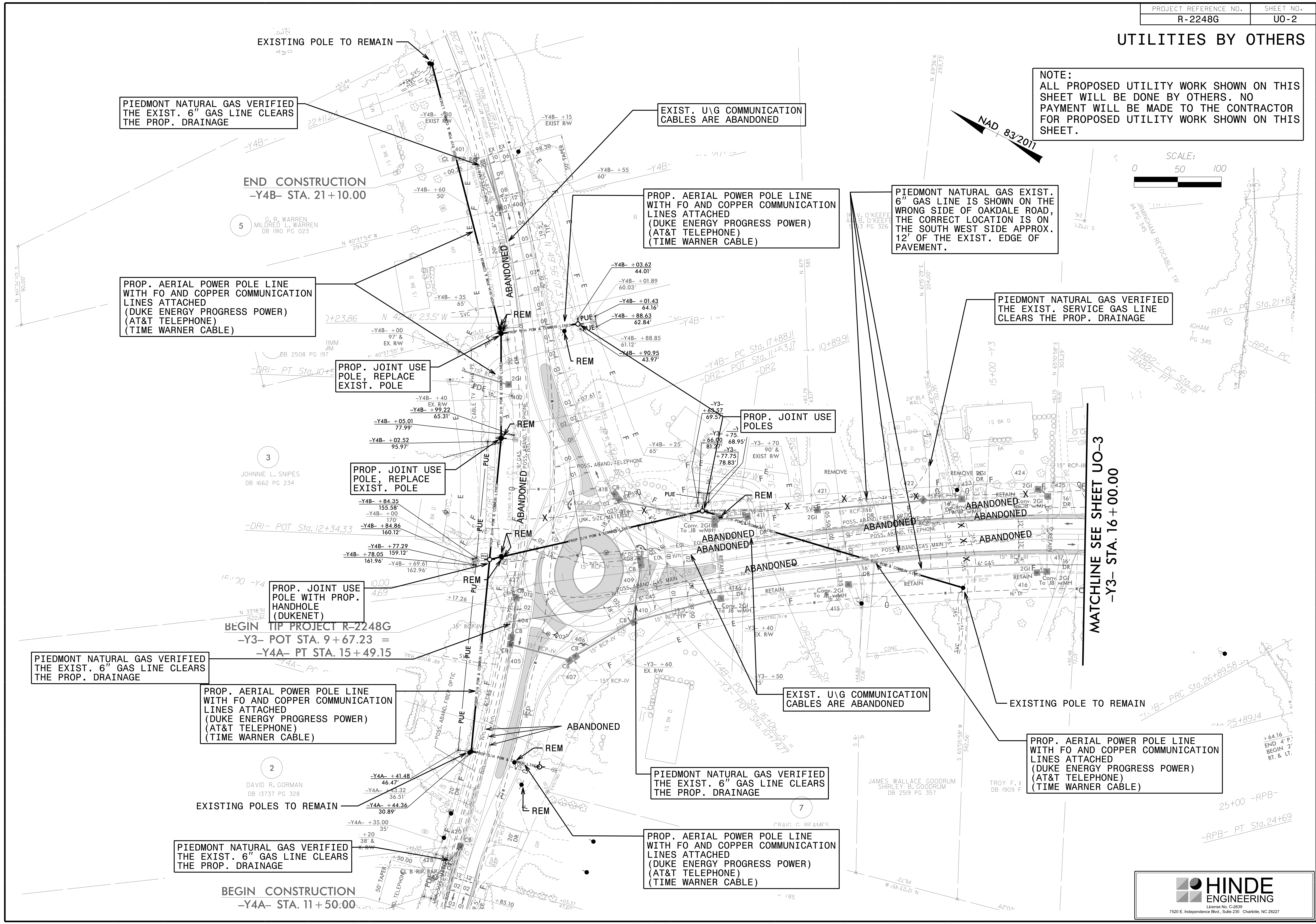


UTILITIES BY OTHERS

NOTE:
ALL PROPOSED UTILITY WORK SHOWN ON THIS SHEET WILL BE DONE BY OTHERS. NO PAYMENT WILL BE MADE TO THE CONTRACTOR FOR PROPOSED UTILITY WORK SHOWN ON THIS SHEET.



NAD 83/2011



PIEDMONT NATURAL GAS VERIFIED THE EXIST. 6" GAS LINE CLEARS THE PROP. DRAINAGE

EXIST. U\G COMMUNICATION CABLES ARE ABANDONED

PROP. AERIAL POWER POLE LINE WITH FO AND COPPER COMMUNICATION LINES ATTACHED (DUKE ENERGY PROGRESS POWER) (AT&T TELEPHONE) (TIME WARNER CABLE)

PIEDMONT NATURAL GAS EXIST. 6" GAS LINE IS SHOWN ON THE WRONG SIDE OF OAKDALE ROAD, THE CORRECT LOCATION IS ON THE SOUTH WEST SIDE APPROX. 12' OF THE EXIST. EDGE OF PAVEMENT.

PROP. AERIAL POWER POLE LINE WITH FO AND COPPER COMMUNICATION LINES ATTACHED (DUKE ENERGY PROGRESS POWER) (AT&T TELEPHONE) (TIME WARNER CABLE)

PIEDMONT NATURAL GAS VERIFIED THE EXIST. SERVICE GAS LINE CLEARS THE PROP. DRAINAGE

PROP. JOINT USE POLE, REPLACE EXIST. POLE

PROP. JOINT USE POLES

PROP. JOINT USE POLE, REPLACE EXIST. POLE

PROP. JOINT USE POLE WITH PROP. HANDHOLE (DUKENET)

PIEDMONT NATURAL GAS VERIFIED THE EXIST. 6" GAS LINE CLEARS THE PROP. DRAINAGE

PROP. AERIAL POWER POLE LINE WITH FO AND COPPER COMMUNICATION LINES ATTACHED (DUKE ENERGY PROGRESS POWER) (AT&T TELEPHONE) (TIME WARNER CABLE)

EXIST. U\G COMMUNICATION CABLES ARE ABANDONED

PROP. AERIAL POWER POLE LINE WITH FO AND COPPER COMMUNICATION LINES ATTACHED (DUKE ENERGY PROGRESS POWER) (AT&T TELEPHONE) (TIME WARNER CABLE)

PIEDMONT NATURAL GAS VERIFIED THE EXIST. 6" GAS LINE CLEARS THE PROP. DRAINAGE

PIEDMONT NATURAL GAS VERIFIED THE EXIST. 6" GAS LINE CLEARS THE PROP. DRAINAGE

PROP. AERIAL POWER POLE LINE WITH FO AND COPPER COMMUNICATION LINES ATTACHED (DUKE ENERGY PROGRESS POWER) (AT&T TELEPHONE) (TIME WARNER CABLE)

MATCHLINE SEE SHEET UO-3
-Y3- STA. 16 + 00.00

BEGIN CONSTRUCTION
-Y4A- STA. 11 + 50.00

BEGIN TIP PROJECT R-2248G
-Y3- POT STA. 9 + 67.23 =
-Y4A- PT STA. 15 + 49.15