

5/28/14

BM3  
Y3 STATION 9+87.19, 121.18' RT.  
RR SPIKE IN 15" PINE

-Y3-

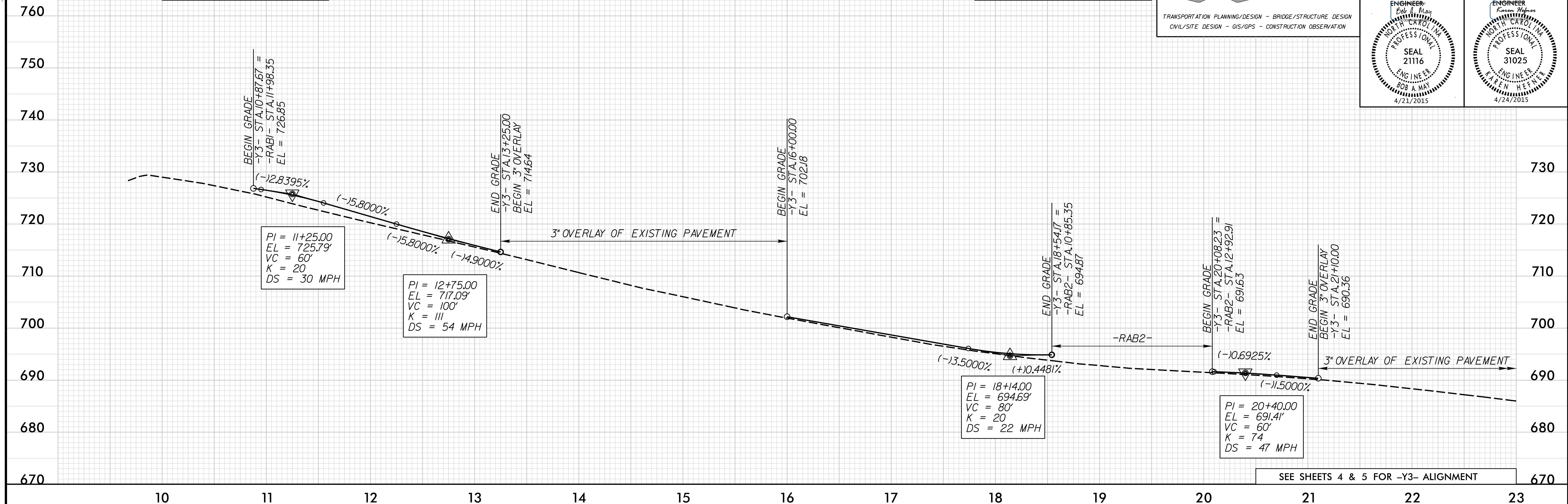
BM2  
Y3 STATION 19+87.70, 141.76' LT.  
RR SPIKE IN MAGNOLIA

559 Jones Franklin Rd, Suite 164  
Raleigh, N.C. 27606  
License No. K-0377  
Bus: 919 851 8077  
Fax: 919 851 8107

**WETHERILL ENGINEERING**

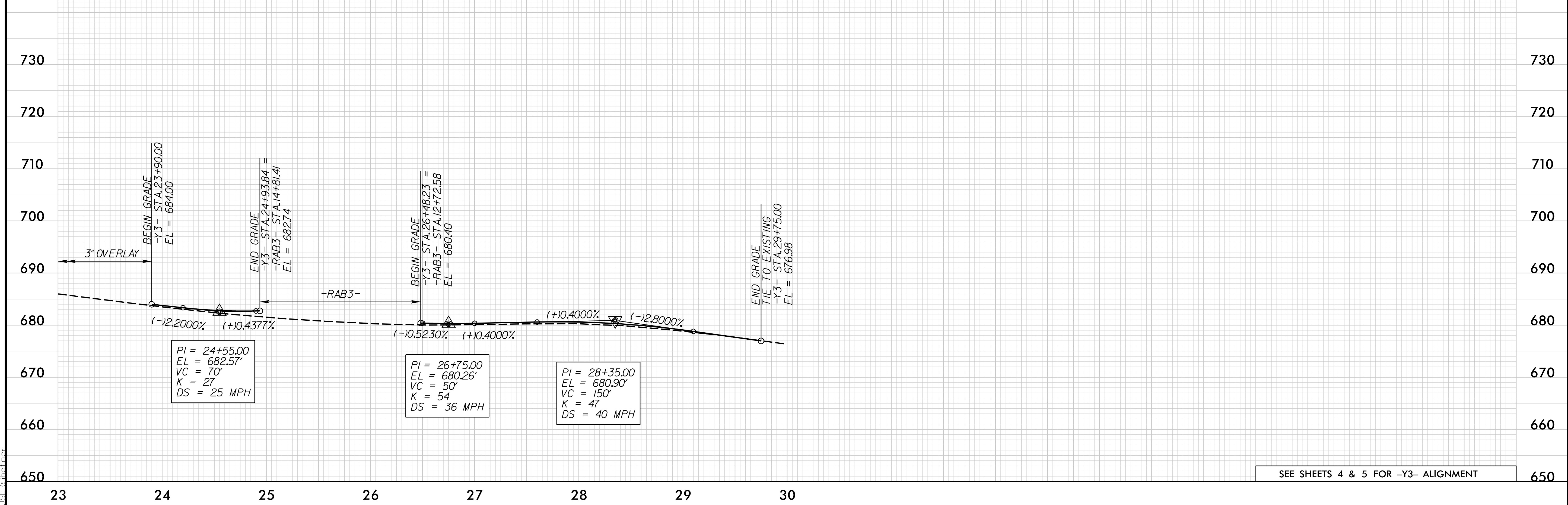
TRANSPORTATION PLANNING/DESIGN - BRIDGE/STRUCTURE DESIGN  
CIVIL/SITE DESIGN - GIS/GPS - CONSTRUCTION OBSERVATION

PROJECT REFERENCE NO. <b>R-2248G</b>	SHEET NO. <b>8</b>
ROADWAY DESIGN ENGINEER <b>Paul J. Hagan</b> SEAL 21116 ENGINEER BOB A. MAY 4/23/2015	HYDRAULICS ENGINEER <b>Karen Wilson</b> SEAL 31025 ENGINEER LAREN HEFFNER 4/24/2015



BM1  
Y3 STATION 29+00.11, 65.64' LT.  
RR SPIKE IN POWER POLE

-Y3-



SEE SHEETS 4 & 5 FOR -Y3- ALIGNMENT

4/14/2015 R2248G\_rdy\_psh\_08\_pro.dgn  
11:58:11 AM