


PROJECT REFERENCE NO.	SHEET NO.
R-2514C	EC-45/CONST.20
R/W SHEET NO.	
ROADWAY DESIGN ENGINEER	HYDRAULICS ENGINEER
 HDR Engineering, Inc. of the Carolinas 3733 National Drive, Suite 207 Raleigh, N.C. 27612 N.C.B.E.L.S. License Number: F-0116	

NAD 83/NSRS 2007

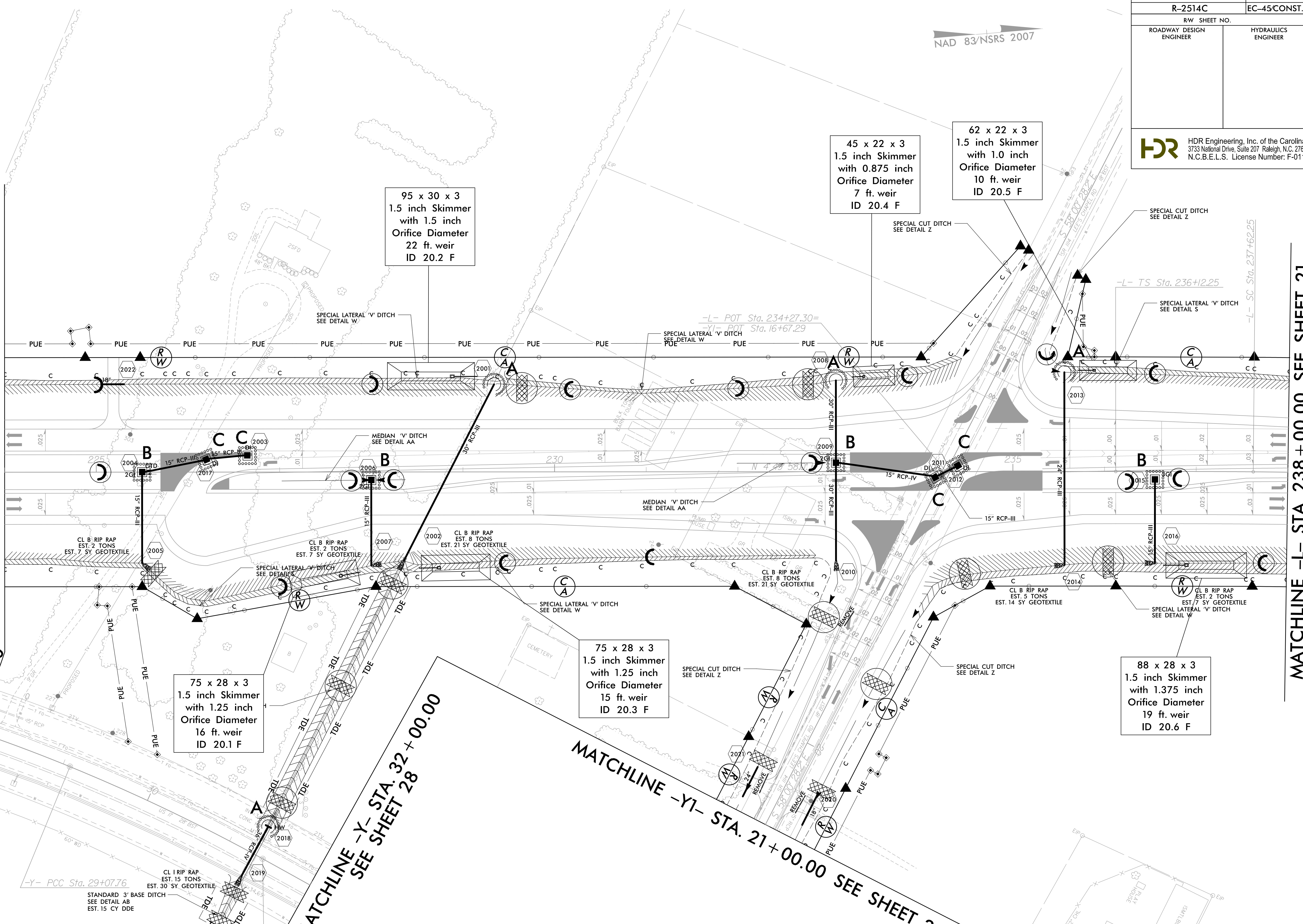
MATCHLINE -L- STA. 224 + 00.00 SEE SHEET 19

MATCHLINE -L- STA. 238 + 00.00 SEE SHEET 21

MATCHLINE -Y- STA. 28 + 00.00

MATCHLINE -Y- STA. 32 + 00.00  
SEE SHEET 28

MATCHLINE -Y1- STA. 21 + 00.00  
SEE SHEET 28



NOTE: ALL DRIVES ARE 12' UNLESS NOTED OTHERWISE.  
PAVE ALL DRIVES TO BACK OF TURNOUT RADIUS.  
SEE SHEET 2-D FOR DRIVEWAY PROFILE DETAILS.

SEE SHEET 37 FOR -L- PROFILE  
SEE SHEET 41 FOR -Y1- PROFILE

REVISIONS

R/W REVISION 7-28-14 (DNIG) - ADDED A SECOND CLAIM OF PUE ON PARCEL 134Z (RANDY D. RIGGS, ET AL).

8/17/99

2/2/2015  
10:48:34 AM  
10:48:34 AM  
Hyd-EC-FINAL\_PSH.dgn