
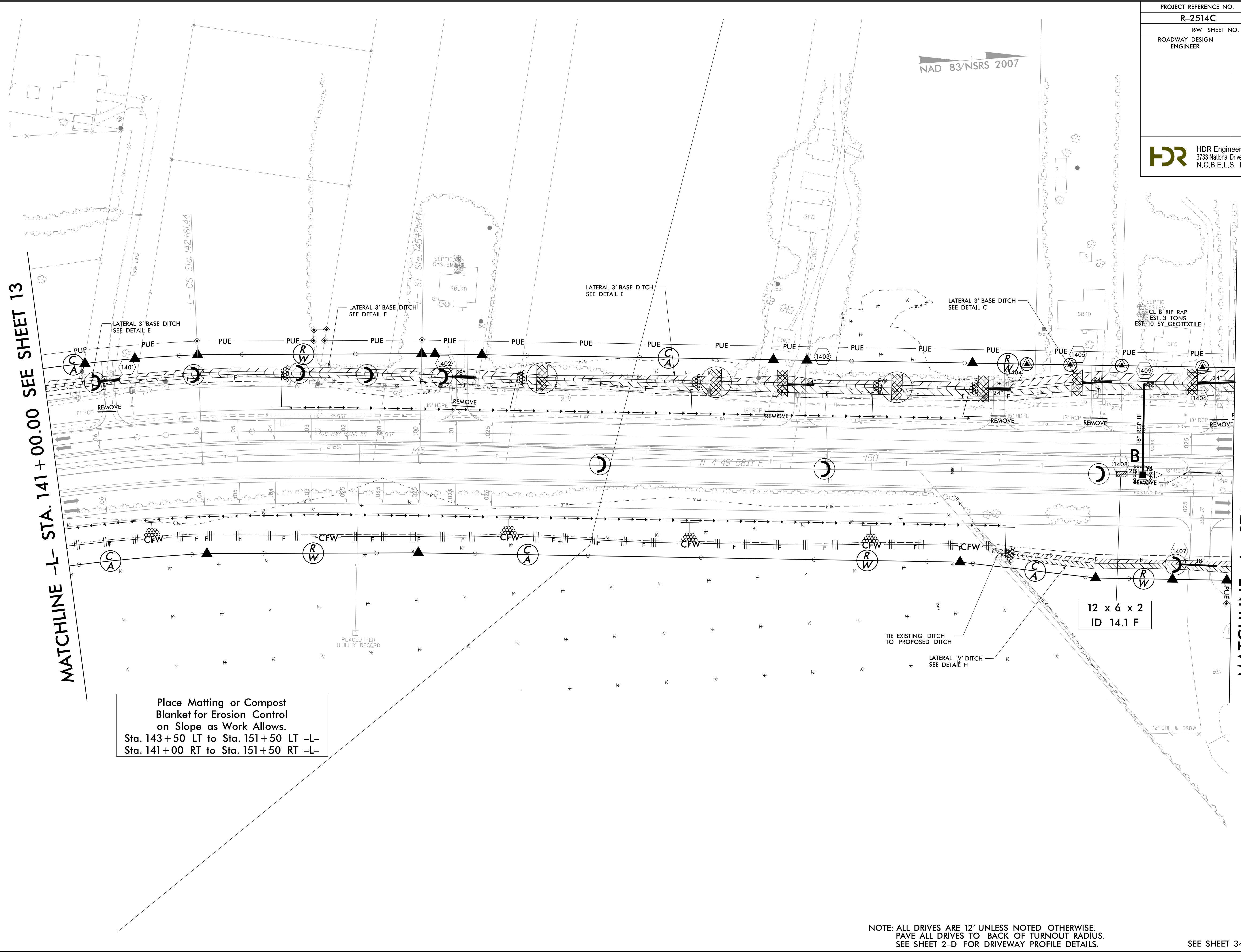


PROJECT REFERENCE NO.	SHEET NO.
R-2514C	EC-39/CONST.14
RW SHEET NO.	
ROADWAY DESIGN ENGINEER	HYDRAULICS ENGINEER
 HDR Engineering, Inc. of the Carolinas 3733 National Drive, Suite 207 Raleigh, N.C. 27612 N.C.B.E.L.S. License Number: F-0116	

REVISIONS
 R/W REVISION 6-25-14 (DWG) - REVISED THE PUE ON PARCEL 5 (ABUNDANT BLESSINGS MINISTRIES INC. NEW HOPE CHURCH OF GOD C/O OLIVER J. COLLINS). ADDED PUE ON PARCEL 58 (BLUE ROCK STRUCTURES, INC.).

8/17/99
 2/2/2015
 T:\2514C_Hyd_EC_FINAL_PSH.dgn



MATCHLINE -L- STA. 141 + 00.00 SEE SHEET 13

MATCHLINE -L- STA. 154 + 00.00 SEE SHEET 15

Place Matting or Compost Blanket for Erosion Control on Slope as Work Allows.
 Sta. 143 + 50 LT to Sta. 151 + 50 LT -L-
 Sta. 141 + 00 RT to Sta. 151 + 50 RT -L-

12 x 6 x 2
 ID 14.1 F

NOTE: ALL DRIVES ARE 12' UNLESS NOTED OTHERWISE.
 PAVE ALL DRIVES TO BACK OF TURNOUT RADIUS.
 SEE SHEET 2-D FOR DRIVEWAY PROFILE DETAILS.

SEE SHEET 34 FOR -L- PROFILE