
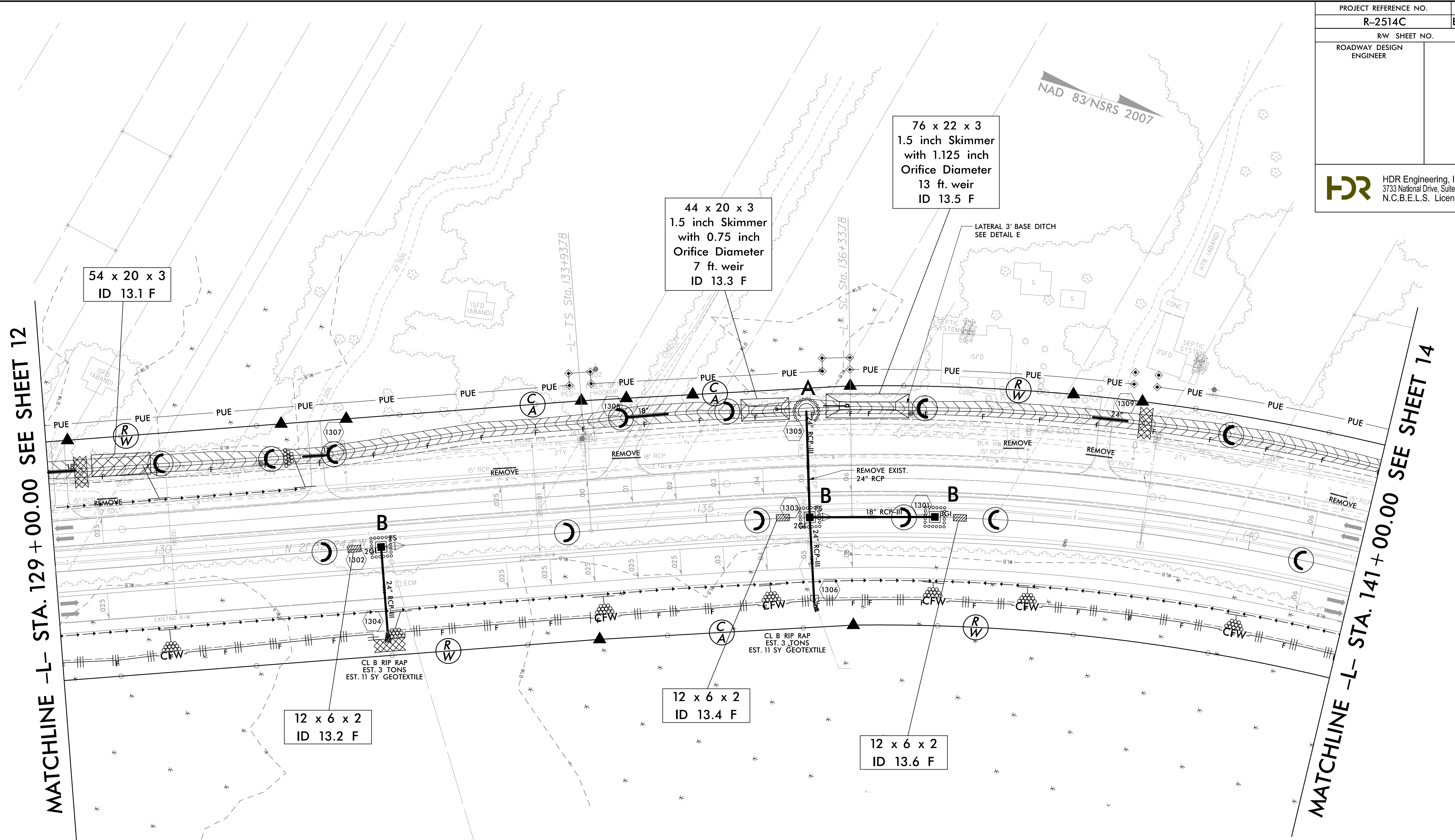


PROJECT REFERENCE NO.	SHEET NO.
R-2514C	EC-38/CONST.13
RW SHEET NO.	
ROADWAY DESIGN ENGINEER	HYDRAULICS ENGINEER
 HDR Engineering, Inc. of the Carolinas 3733 National Drive, Suite 207 Raleigh, N.C. 27612 N.C.B.E.L.S. License Number: F-0116	

REVISIONS  
 R/W REVISION 6-25-14 (DWG) - REVISED THE PUE ON PARCEL 42 (OTIS A. SIMMONS, ET AL), PARCEL 46 (JAMES V. BENDER, JR.), PARCEL 47 (CHARLES W. JONES, ET UX), AND PARCEL 48 (BERNARD JONES, SR).

8/17/99  
 2/2/2015  
 10:24:45 AM  
 4C\_Hyd\_EC\_FINAL\_PSH.dgn



54 x 20 x 3  
ID 13.1 F

44 x 20 x 3  
1.5 inch Skimmer  
with 0.75 inch  
Orifice Diameter  
7 ft. weir  
ID 13.3 F

76 x 22 x 3  
1.5 inch Skimmer  
with 1.125 inch  
Orifice Diameter  
13 ft. weir  
ID 13.5 F

12 x 6 x 2  
ID 13.2 F

12 x 6 x 2  
ID 13.4 F

12 x 6 x 2  
ID 13.6 F

Place Matting or Compost  
Blanket for Erosion Control  
on Slope as Work Allows.  
Sta. 129+00 LT to Sta. 131+50 LT -L-  
Sta. 129+00 RT to Sta. 141+00 RT -L-

NOTE: ALL DRIVES ARE 12' UNLESS NOTED OTHERWISE.  
PAVE ALL DRIVES TO BACK OF TURNOUT RADIUS.  
SEE SHEET 2-D FOR DRIVEWAY PROFILE DETAILS.

SEE SHEET 33 FOR -L- PROFILE