
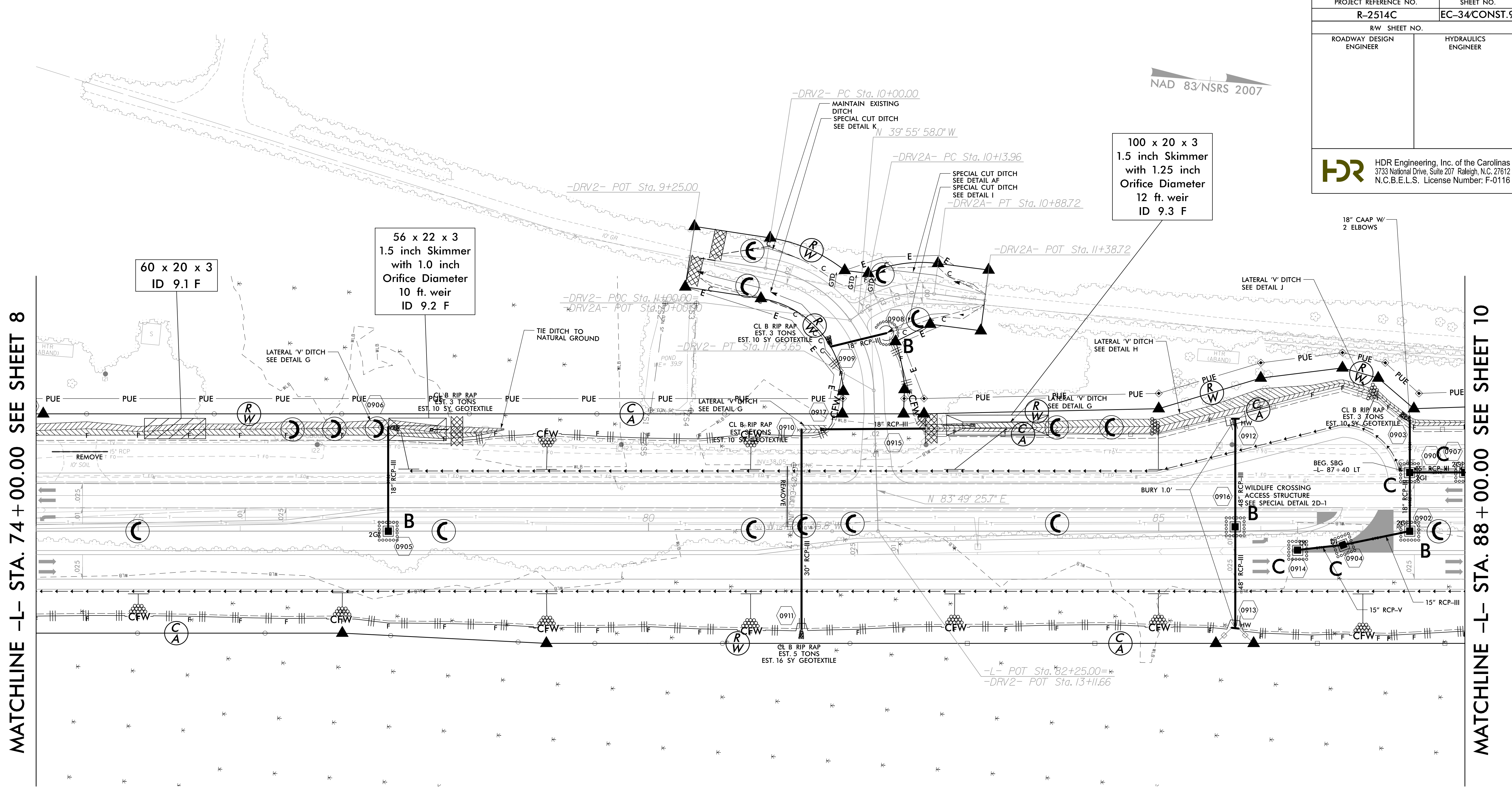


PROJECT REFERENCE NO.		SHEET NO.	
R-2514C		EC-34/CONST.9	
RW SHEET NO.			
ROADWAY DESIGN ENGINEER		HYDRAULICS ENGINEER	
 HDR Engineering, Inc. of the Carolinas 3733 National Drive, Suite 207 Raleigh, N.C. 27612 N.C.B.E.L.S. License Number: F-0116			

NAD 83/NSRS 2007



MATCHLINE -L- STA. 74 + 00.00 SEE SHEET 8

MATCHLINE -L- STA. 88 + 00.00 SEE SHEET 10

60 x 20 x 3  
1.5 inch Skimmer  
ID 9.1 F

56 x 22 x 3  
1.5 inch Skimmer  
with 1.0 inch  
Orifice Diameter  
10 ft. weir  
ID 9.2 F

100 x 20 x 3  
1.5 inch Skimmer  
with 1.25 inch  
Orifice Diameter  
12 ft. weir  
ID 9.3 F

Place Matting or Compost  
Blanket for Erosion Control  
on Slope as Work Allows.  
Sta. 78+00 LT to Sta. 88+00 RT -L-  
Sta. 74+00 RT to Sta. 88+00 RT -L-  
Sta. 11+50 LT to Sta. 12+50 LT -DRV2-  
Sta. 11+50 RT to Sta. 12+50 RT -DRV2-

NOTE: SBG - "SHOULDER BERM GUTTER"  
ALL DRIVES ARE 12' UNLESS NOTED OTHERWISE.  
PAVE ALL DRIVES TO BACK OF TURNOUT RADIUS.  
SEE SHEET 2-D FOR DRIVEWAY PROFILE DETAILS.  
SEE SHEET 2-G FOR WILDLIFE FENCE DETAIL.

SEE SHEET 31 FOR -L- PROFILE  
SEE SHEET 43 FOR -DRV2- PROFILE  
SEE SHEET 43 FOR -DRV2A- PROFILE

REVISIONS  
 R/W REVISION 01-06-14 (DWG) - ADDED R/W AND REVISED THE TCE AND PUE ON PARCEL 32 (RACHEL M. EUBANK), PARCEL 33 (JACK L. HOLLAND), AND PARCEL 34 (WEYERHAEUSER COMPANY) FOR THE REVISED 20' WIDTH OF -DRV2- AND -DRV2A-.

8/17/99

2/2/2015  
 10:24:15 AM  
 R:\2015\2514C-Hyd-EC-FINAL\_PSH.dgn