
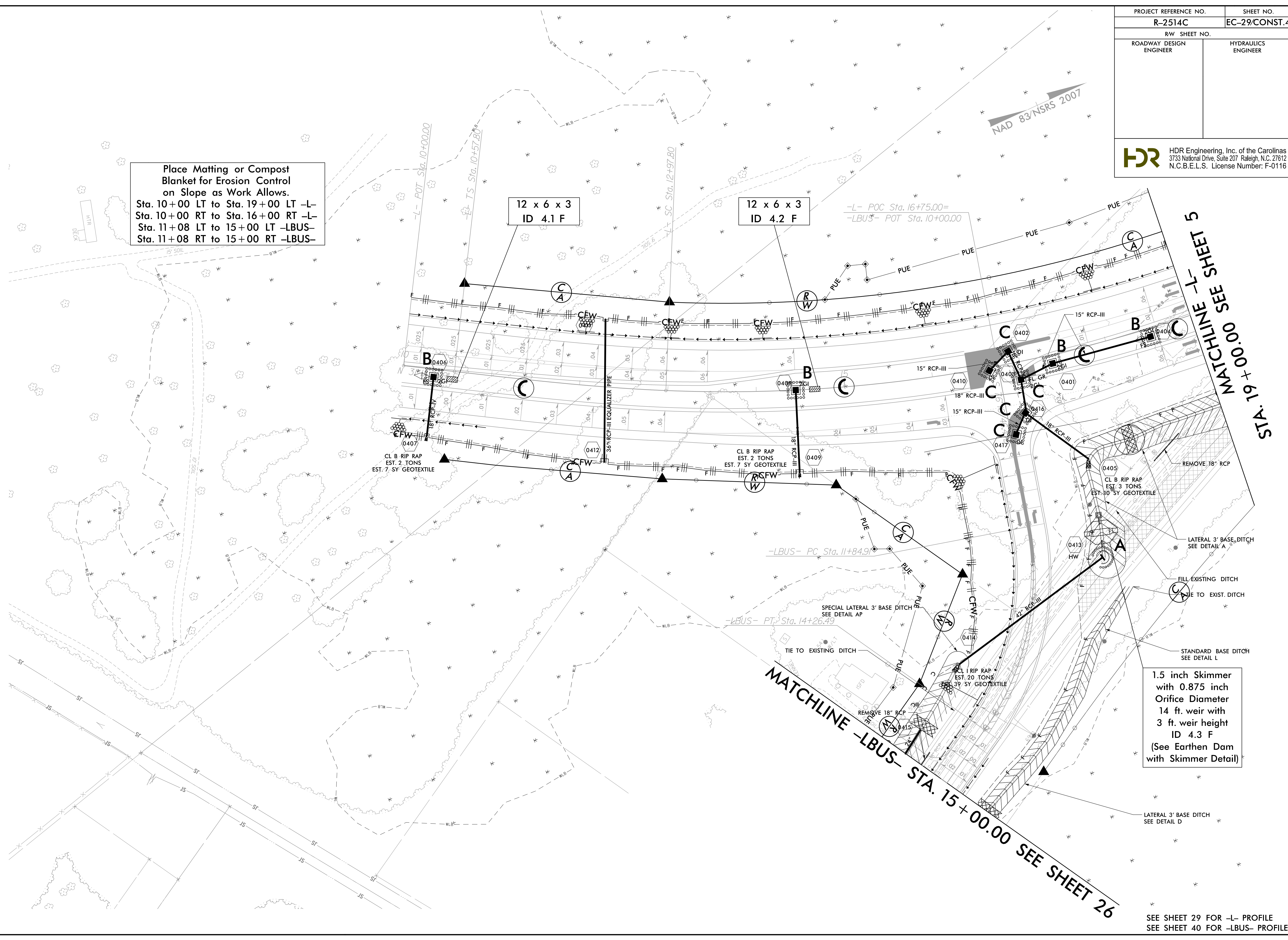


PROJECT REFERENCE NO.		SHEET NO.	
R-2514C		EC-29/CONST.4	
RW SHEET NO.			
ROADWAY DESIGN ENGINEER		HYDRAULICS ENGINEER	
 HDR Engineering, Inc. of the Carolinas 3733 National Drive, Suite 207 Raleigh, N.C. 27612 N.C.B.E.L.S. License Number: F-0116			

REVISIONS
 R/W REVISION 6-25-14 (DMG) - ADDED ADDITIONAL PUE FROM -L- STA. 14+85.00 TO STA. 18+75.00 LT ON PARCEL 2 (DONELLE MAURICE MYERS) AND REVISED PUE ON PARCEL 3 (AMBROSE ROBERT S, JR.)

8/17/99
 2/2/2015
 10:46:50 AM
 4C_Hyd_EC_FINAL_PSH.dgn



Place Matting or Compost
 Blanket for Erosion Control
 on Slope as Work Allows.
 Sta. 10+00 LT to Sta. 19+00 LT -L-
 Sta. 10+00 RT to Sta. 16+00 RT -L-
 Sta. 11+08 LT to 15+00 LT -LBUS-
 Sta. 11+08 RT to 15+00 RT -LBUS-

12 x 6 x 3
ID 4.1 F

12 x 6 x 3
ID 4.2 F

-L- POC Sta. 16+75.00=
-LBUS- POT Sta. 10+00.00

MATCHLINE -L- SHEET 5
 MATCHLINE SEE SHEET 19+00.00 STA. 19+00.00

MATCHLINE -LBUS- STA. 15+00.00 SEE SHEET 26

1.5 inch Skimmer
 with 0.875 inch
 Orifice Diameter
 14 ft. weir with
 3 ft. weir height
 ID 4.3 F
 (See Earthen Dam
 with Skimmer Detail)

SEE SHEET 29 FOR -L- PROFILE
 SEE SHEET 40 FOR -LBUS- PROFILE