
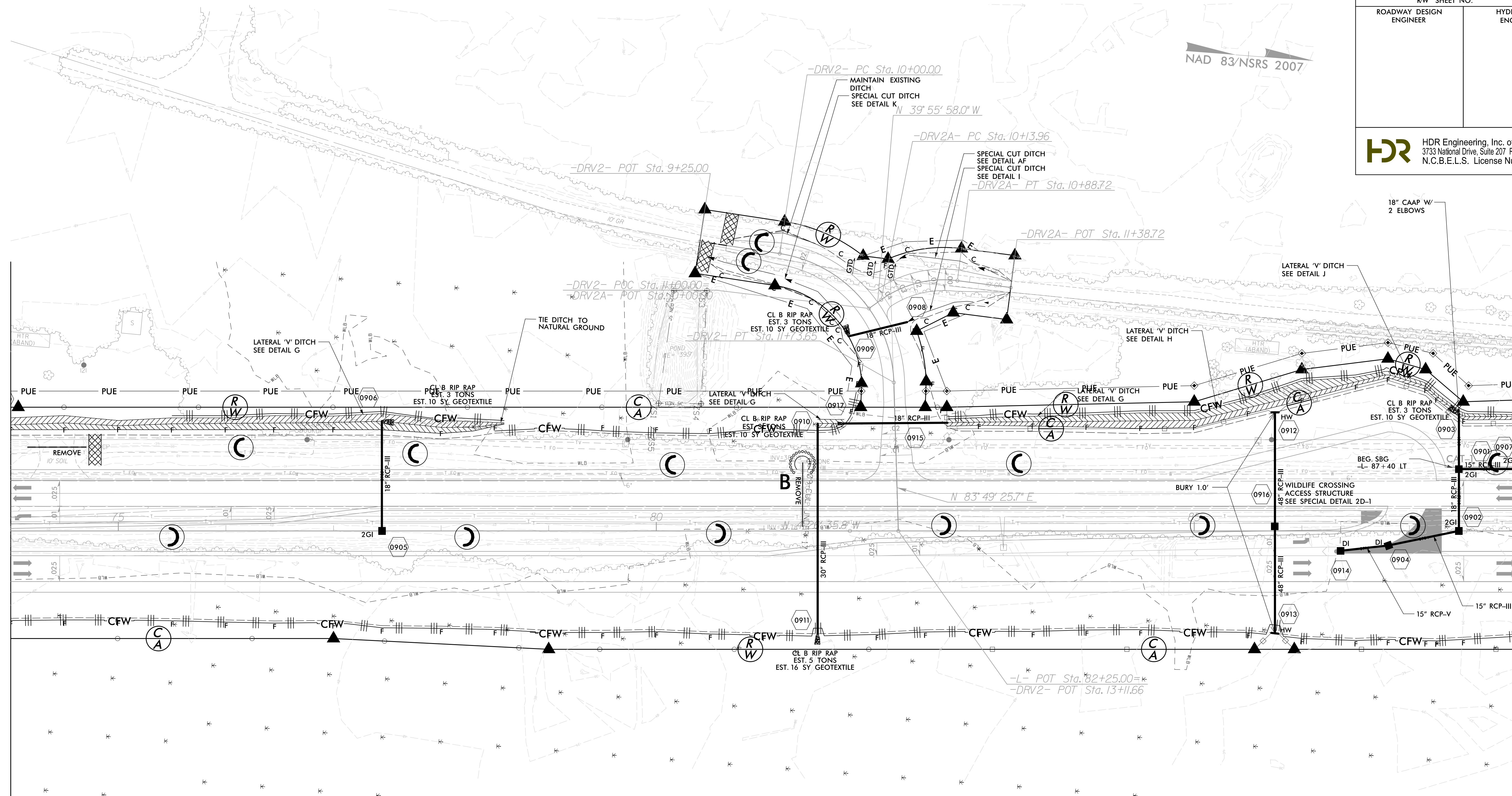


PROJECT REFERENCE NO.	SHEET NO.
R-2514C	EC-9/CONST.9
RW SHEET NO.	
ROADWAY DESIGN ENGINEER	HYDRAULICS ENGINEER
 HDR Engineering, Inc. of the Carolinas 3733 National Drive, Suite 207 Raleigh, N.C. 27612 N.C.B.E.L.S. License Number: F-0116	

NAD 83/NSRS 2007

MATCHLINE -L- STA. 74 + 00.00 SEE SHEET 8

MATCHLINE -L- STA. 88 + 00.00 SEE SHEET 10



REVISIONS
 R/W REVISION 01-06-14 (DWG) - ADDED R/W AND REVISED THE TCE AND PUE ON PARCEL 32 (RACHEL M. EUBANK), PARCEL 33 (JACK L. HOLLAND), AND PARCEL 34 (WEYERHAEUSER COMPANY) FOR THE REVISED 20' WIDTH OF -DRV2- AND -DRV2A-.

CLEARING AND GRUBBING
EROSION CONTROL FOR
CONSTRUCTION SHEET 9

NOTE:
PLACE TEMPORARY ROCK SEDIMENT DAMS TYPE - B
AND TEMPORARY ROCK SILT CHECKS TYPE - A AT
DRAINAGE OUTLETS.

NOTE:
PERIMETER EROSION CONTROL MEASURES SHALL BE
INSTALLED DURING CLEARING AND GRUBBING PHASE.

NOTE: SBG - "SHOULDER BERM GUTTER"
ALL DRIVES ARE 12' UNLESS NOTED OTHERWISE.
PAVE ALL DRIVES TO BACK OF TURNOUT RADIUS.
SEE SHEET 2-D FOR DRIVEWAY PROFILE DETAILS.
SEE SHEET 2-G FOR WILDLIFE FENCE DETAIL.

SEE SHEET 31 FOR -L- PROFILE
SEE SHEET 43 FOR -DRV2- PROFILE
SEE SHEET 43 FOR -DRV2A- PROFILE

2/2/2015
 10:00:40 AM
 14C_Hyd_EC_CG_PSH.dgn