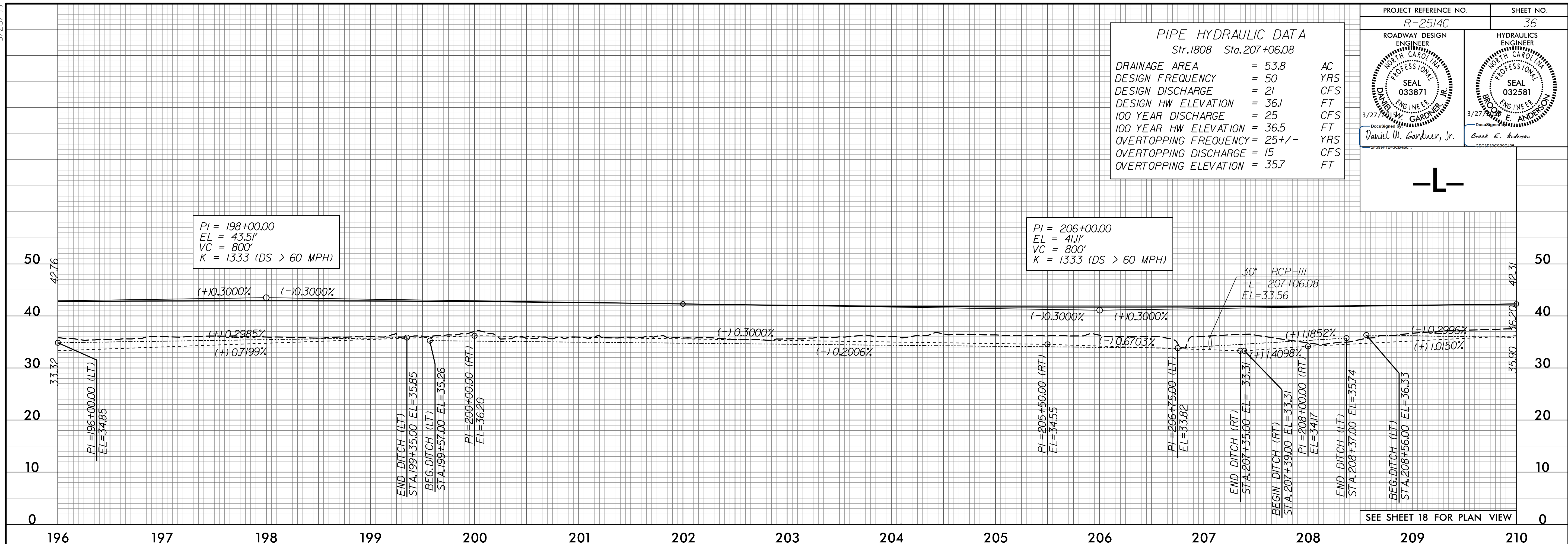


PROJECT REFERENCE NO. R-2514C	SHEET NO. 36
ROADWAY DESIGN ENGINEER DANIEL W. GARDNER, JR. SEAL 033871 3/27/99	HYDRAULICS ENGINEER BROOK E. ANDERSON SEAL 032581 3/27/99

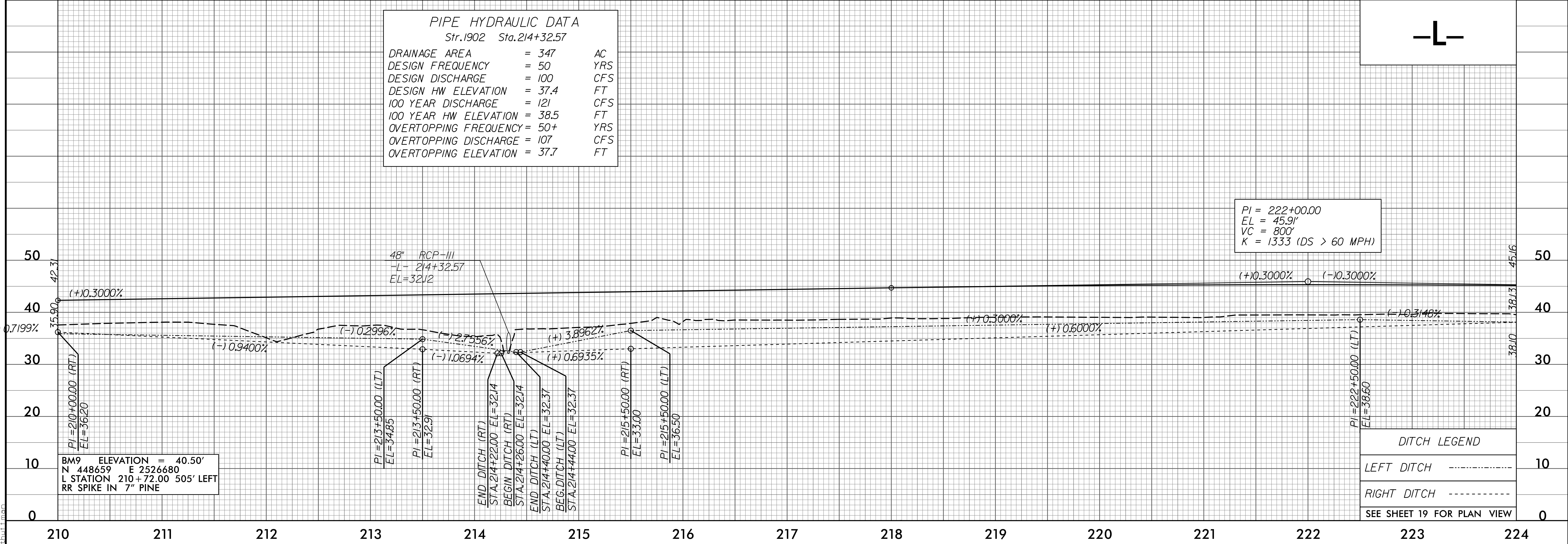
PIPE HYDRAULIC DATA  
Str.1808 Sta.207+06.08

DRAINAGE AREA	= 53.8	AC
DESIGN FREQUENCY	= 50	YRS
DESIGN DISCHARGE	= 21	CFS
DESIGN HW ELEVATION	= 36.1	FT
100 YEAR DISCHARGE	= 25	CFS
100 YEAR HW ELEVATION	= 36.5	FT
OVERTOPPING FREQUENCY	= 25+/-	YRS
OVERTOPPING DISCHARGE	= 15	CFS
OVERTOPPING ELEVATION	= 35.7	FT



PIPE HYDRAULIC DATA  
Str.1902 Sta.214+32.57

DRAINAGE AREA	= 347	AC
DESIGN FREQUENCY	= 50	YRS
DESIGN DISCHARGE	= 100	CFS
DESIGN HW ELEVATION	= 37.4	FT
100 YEAR DISCHARGE	= 121	CFS
100 YEAR HW ELEVATION	= 38.5	FT
OVERTOPPING FREQUENCY	= 50+	YRS
OVERTOPPING DISCHARGE	= 107	CFS
OVERTOPPING ELEVATION	= 37.7	FT



BM9 ELEVATION = 40.50'  
N 448659 E 252680  
L STATION 210+72.00 505' LEFT  
RR SPIKE IN 7" PINE

DITCH LEGEND

LEFT DITCH	-----	10
RIGHT DITCH	-----	10

SEE SHEET 19 FOR PLAN VIEW